



FD8381-EV

Fixed Dome Network Camera

5MP 25 fps · 30M IR · Smart Focus System · IP66 · IK10 · Extreme Weather Support with PoE · Smart Stream

VIVOTEK FD8381-EV is a brand-new professional outdoor dome network camera offering up to 25 fps @ 5-Megapixel or 30 fps @ 1080p resolution with superb image quality. Equipped with new image technology, FD8381-EV provides excellent image quality and finer detail than ever before. The powerful 3D Noise Reduction technology and Smart Stream technology enable the FD8381-EV to optimize resolution on a desired object or area to maximize efficiency of bandwidth usage.

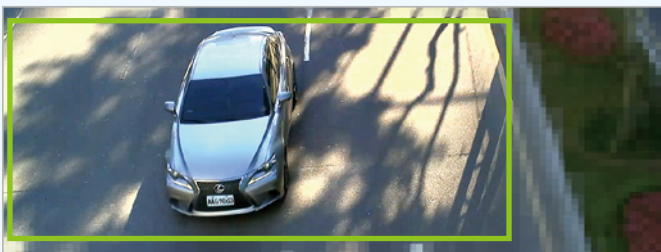
The IP66-rated housing is also designed to ensure the camera body to withstand rain and dust and guarantees smooth operation under a multitude of harsh weather condition, while IK10-rated design protects FD8381-EV from vandal damages. Additionally, the wide operating temperature range further enhances the FD8381-EV's performance and reliability in extremely cold and warm weather even with PoE.

Key Features

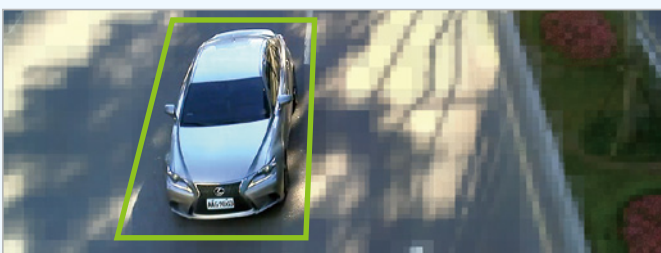
- 5-Megapixel CMOS Sensor
- 25 fps @ 2560x1920
- 3 ~ 10 mm Vari-focal, Remote Focus, P-iris Lens
- Removable IR-cut Filter for Day & Night Function
- Built-in IR Illuminators, Effective up to 30 Meters
- Real-time H.264, and MJPEG Compression
- Two-way Audio
- WDR Enhancement for Unparalleled Visibility in Extremely Bright and Dark Environments
- Smart Focus System for Remote and Precise Focus Adjustment
- Weather-proof IP66-rated and Vandal-proof IK10-rated Housing
- Built-in 802.3at Compliant PoE
- Built-in MicroSD/SDHC/SDXC Card Slot for On-board Storage
- Smart Stream

Smart Stream-

Smartly Allocates Bandwidth While Retaining Good Video Quality on ROI



Manual Mode



Auto Mode



Airport



Train Station



Outdoor Sidewalk



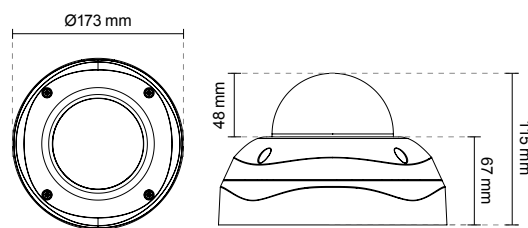
Extreme Weather

Technical Specifications

| | |
|-------------------------------|--|
| Model | FD8381-EV |
| System Information | |
| CPU | Multimedia SoC (System-on-Chip) |
| Flash | 256 MB |
| RAM | 512 MB |
| Camera Features | |
| Image Sensor | 1/3.2" Progressive CMOS |
| Maximum Resolution | 2560x1920 |
| Lens Type | Vari-focal |
| Focal Length | f = 3 ~ 10 mm |
| Aperture | F1.3 ~ F2.5 |
| Auto-iris | P-iris |
| Field of View | 28° ~ 82° (Horizontal) 21° ~ 61° (Vertical) 37° ~ 107° (Diagonal) |
| Shutter Time | 1/5 sec. to 1/32,000 sec. |
| WDR Technology | WDR Enhanced |
| Day/Night | Removable IR-cut filter for day & night function |
| Minimum Illumination | 0.27 Lux @ F1.3 (Color) 0.001 Lux @ F1.3 (B/W) |
| Pan/tilt/zoom Functionalities | ePTZ: 48x digital zoom (4x on IE plug-in, 12x built in) |
| IR Illuminators | Built-in IR illuminators, effective up to 30 meters |
| On-board Storage | MicroSD/SDHC/SDXC card slot |
| Video | |
| Compression | H.264 & MJPEG |
| Maximum Frame Rate | H.264: 25 fps at 2560x1920 30 fps at 1920x1080 MJPEG: 25 fps at 2560x1920 30 fps at 1920x1080 |
| Maximum Streams | 3 simultaneous streams |
| S/N Ratio | Above 62 dB |
| Dynamic Range | 69 dB |
| Video Streaming | Adjustable resolution, quality and bitrate |
| Image Settings | Adjustable image size, quality and bit rate, time stamp, text overlay, flip & mirror, configurable brightness, contrast, saturation, sharpness, white balance, exposure control, gain, backlight compensation, privacy masks, scheduled profile settings, seamless recording, smart stream, 3D Noise Reduction |
| Audio | |
| Audio Capability | Audio input/output (full duplex) |
| Compression | AAC, G.711, G.726 |
| Interface | External microphone input Audio output |
| Network | |
| Users | Live viewing for up to 10 clients |
| Protocols | IPv4, IPv6, TCP/IP, HTTP, HTTPS, UPnP, RTSP/RTCP, IGMP, SMTP, FTP, DHCP, NTP, DNS, DDNS, PPPoE, CoS, QoS, SNMP, 802.1X, UDP, ICMP |
| Interface | 10Base-T/100BaseTX Ethernet (RJ-45) *It is highly recommended to use standard Cat. 5e & Cat. 6 cables which are compliant with the 3P/ETL standard. |
| ONVIF | Supported, specification available at www.onvif.org |

| | |
|-----------------------------|---|
| Intelligent Video | |
| Video Motion Detection | Triple-window video motion detection |
| Alarm and Event | |
| Alarm Triggers | Video motion detection, manual trigger, digital input, periodical trigger, system boot, recording notification, camera tampering detection, audio detection |
| Alarm Events | Event notification using digital output, HTTP, SMTP, FTP and NAS server, SD Card File upload via HTTP, SMTP, FTP, NAS server and SD card |
| General | |
| Smart Focus System | Remote focus |
| Connectors | RJ-45 cable connector for Network/PoE connection Audio input Audio output AC 24V power input DC 12V power input Digital input*1 Digital output*1 Analog video output |
| LED Indicator | System power and status indicator |
| Power Input | 24V AC 12V DC IEEE 802.3at PoE |
| Power Consumption | Max. 18.37W (DC 12V) Max. 21.57W (AC 24V) Max. 21.95W (PoE) |
| Dimensions | Ø: 173 mm x 115 mm |
| Weight | Net: 1256g |
| Casing | Weather-proof IP66-rated housing Vandal-proof IK10-rated housing |
| Safety Certifications | CE, LVD, FCC Class A, VCCI, C-Tick, UL |
| Operating Temperature | Starting Temperature: -40°C ~ 50°C (-40°F ~ 122°F) Working Temperature: -50°C ~ 50°C (-58°F ~ 122°F) |
| Warranty | 36 months |
| System Requirements | |
| Operating System | Microsoft Windows 7/8/Vista/XP/2000 |
| Web Browser | Mozilla Firefox 7-10 (Streaming only) Internet Explorer 7.x, 8.x, 9.x, 10.x, 11.x |
| Other Players | VLC: 1.1.11 or above Quicktime: 7 or above |
| Included Accessories | |
| CD | User's manual, quick installation guide, Installation Wizard 2, ST7501 32-channel recording software |
| Others | Quick installation guide, warranty card, mounting plate, alignment sticker, desiccant bag, screw |

Dimensions



Compatible Accessories

Mounting Kits



AM-215
L Shape Bracket



AM-516
Adaptor Ring



AM-520
Mounting Adapter



AM-51A
Mounting Adapter

All specifications are subject to change without notice. Copyright © VIVOTEK INC. All rights reserved.

Ver. 6