



Vivotek *IP Surveillance System*

Network Camera IP2112/2122

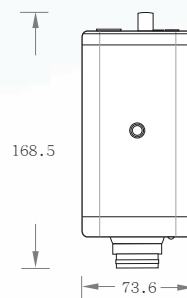
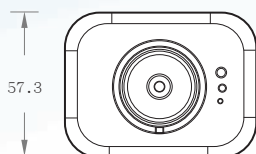
The network camera IP2112/22 combines powerful video server and high quality image sensor for easy migration to digital video surveillance and monitoring. Real-time and high-quality video is digitized over Ethernet and enjoyed at your finger tip without any compromise. With external device support and motion detection, Vivotek network cameras can easily build the optimal security applications.

F e a t u r e s

- Easy web access via popular browsers
- Familiar wizard assistance
- Built-in crystal clear CCD
- Real-time performance with options of size and quality
- Built-in motion detection
- Extension for sensor and alarm
- Development kit for system integrators

Technical Specifications

IP2112/2122



Model

- IP2112 NTSC CCD
- IP2122 PAL CCD

System

- CPU: Trimedia PN1300
- RAM: 16MB SDRAM
- ROM: 2MB FLASH ROM

Networking

- Protocol
TCP/IP, HTTP, SMTP, FTP, Telnet, NTP, DNS and DHCP
- Ethernet
10 baseT or 100 baseT Fast Ethernet auto negotiation

Video

- Algorithm supported
MJPEG
- Features
Adjustable image size and quality
B/W or color control
Time stamp and text overlay
- Resolution
NTSC
Up to 30 frames at 176x112
Up to 30 frames at 352x240
Up to 9 frames at 704x480
PAL
Up to 25 frames at 176x144
Up to 25 frames at 352x288
Up to 8 frames at 704x576

Camera Specification

- 1/4 inch color CCD image sensor
- 1 Lux / F2.0
- AGC, AWB, AES
- IP2112
Resolution: 512(H)x492(V)
Electronic shutter: 1/60~1/100,000sec.
- IP2122
Resolution: 512(H)x582(V)
Electronic shutter: 1/50~1/100,000sec.

Lens

- Standard CS-mount type, 6.0mm, F2.0

General I/O

- 1 sensor input max. 12VDC 50mA
- 1 relay output max. 24VDC 1A / 125VAC 0.5A

LED Indicator

- Dual color system status indicator

Dimension

- Length: 168.5mm
- Width: 73.6mm
- Height: 57.3mm

Weight

- NET: 380g

Power

- Consumption: near 5.4W
- Input: 100-240VAC, 50/60Hz, 0.4A
- Output: 12VDC, 1.5A

Operating Environment

- Temperature: 0~50°C(32~122°F)
- Humidity: 95% RH

EMI & Safety

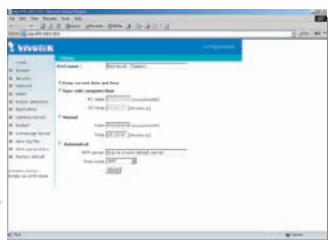
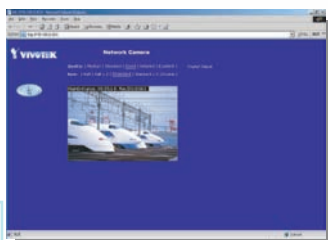
- CE, FCC

Viewing System Requirement

- Internet Explorer 4.x or above;
Netscape Navigator 4.x or above

Free Bundled ST2202 Software

- Remote configuration and control
- Event-triggered, scheduled, manual recording
- Instant search with preview windows
- Fast/slow forward replay and pause
- Hard disk quota warning
- Scheduled backup
- AVI format export



All specifications are subject to change without notice.
All other trademarks are owned by their respective companies.



VIVOTEK INC.
6F., No.192, Lien-Cheng Rd.,
Chung-Ho, Taipei County, Taiwan
Tel: +886 2 82455282
E-mail: sales@vivotek.com
Web: www.vivotek.com

