



## **Vivotek** **IP Surveillance System**

# **Network Camera** **IP3111/3121**

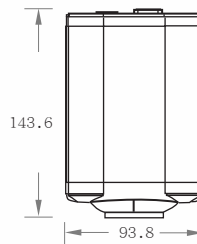
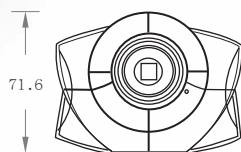
Vivotek's IP surveillance technology offers more future-proof and cost-effective solutions to help you migrating from analog to digital in a smooth way. Connecting to a network or modem, our digital compression technology ensures the lowest bandwidth requirement without sacrificing image quality. Vivotek's IP3111/3121 network cameras are implemented by a DSP, which provides the most professional embedded system ideal for transmitting multimedia streams over existing IP network.

### **Features**

- High performance and fully configurable MPEG4 compression
- Optimal synchronization of audio and video
- Built-in CCD and extension for auto iris lens
- Built-in web server for global access
- Motion detection with 3 sensitive windows
- Remote PT scanner control
- Pre/Post alarm snapshots
- Remote control for sensor and alarm
- WAN support via external modem

# Technical Specifications

## IP3111/3121



### Model

- IP3111 NTSC CCD
- IP3121 PAL CCD

### System

- CPU: Trimedia PNX1300
- RAM: 16MB SDRAM
- ROM: 2MB FLASH ROM

### Networking

- Protocol  
TCP/IP, HTTP, SMTP, FTP, Telnet, NTP, DNS and DHCP
- Modem  
PPP(dial-up, direct cable connection)
- Ethernet  
10 baseT or 100 baseT Fast Ethernet auto negotiation

### Video

- Algorithm supported  
MPEG4(short header mode)
- Features  
Adjustable image size, quality and bit-rate  
Time stamp and text overlay  
3 motion detection windows
- Resolution  
**IP3111(NTSC)**  
Up to 30 frames at 176x120  
Up to 30 frames at 352x240  
**IP3121(PAL)**  
Up to 25 frames at 176x144  
Up to 25 frames at 352x288

### Serial Port

- 9 pin D-SUB RS232 or RS485  
(PTZ camera control or modem)  
max. 115.2kbps

### Camera Specification

- 1/3 inch color CCD image sensor  
1 Lux / F2.0  
AGC, AWB, AES
- IP3111  
Resolution: 512(H)x492(V)  
Electronic shutter: 1/60~1/100,000sec.
- IP3121  
Resolution: 512(H)x582(V)  
Electronic shutter: 1/50~1/100,000sec.

### Lens

- Standard CS-mount type, 6.0mm, F1.8

### Audio

- 24kbps and 8kbps (optional)

### Microphone

- Omni-directional
- Frequency  
50 ~ 16000Hz
- S/N ratio  
More than 60dB

### General I/O

- 1 sensor input max. 12VDC 50mA
- 1 relay output max. 24VDC 1A / 125VAC 0.5A

### LED Indicators

- Network indicator
- Heartbeat indicator
- Status indicator

### Dimension

- Length: 143.6mm
- Width: 93.8mm
- Height: 71.6mm

### Weight

- NET: 700g

### Power

- Consumption: near 5.4W
- Input: 100-240VAC, 50/60Hz, 0.4A
- Output: 12VDC, 1.5A

### Operating Environment

- Temperature: 0~50°C(32~122°F)
- Humidity: 95% RH

### EMI & Safety

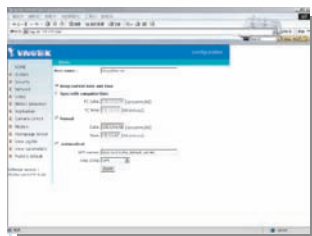
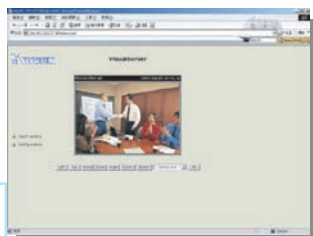
- CE, FCC

### Viewing System Requirement

- Operation system: Microsoft Windows98 SE, ME, NT4.0, 2000, XP
- Browser: Internet Explorer5.0 or above

### Free Bundled ST3201 Software

- Remote configuration and control for four devices
- Event-triggered, scheduled, manual recording
- Instant search with preview windows
- Fast/slow forward replay and pause
- Hard disk quota warning
- Scheduled backup
- AVI format export
- \* 16-channel commercial version is available



All specifications are subject to change without notice.  
All other trademarks are owned by their respective companies.



VIVOTEK INC.  
6F., No.192, Lien-Cheng Rd.,  
Chung-Ho, Taipei County, Taiwan  
Tel: +886 2 82455282  
E-mail: sales@vivotek.com  
Web: www.vivotek.com

