



# IP8166

Fixed Network Camera



2MP · Smart Stream II · SNV · WDR Enhanced · 3DNR · Video Rotation · Defog

VIVOTEK's IP8166 is a professional box network camera equipped with a Full HD sensor enabling a viewing resolution of 1920x1080 at a smooth 30 fps. The IP8166 is capable of capturing high quality, high resolution video at up to 2 Megapixels in low light environments with VIVOTEK's SNV technology, making the camera ideal for a wide range of video surveillance applications, including supermarkets, banks, hotels and parking lots and also suitable for many more situations.

Further empowering this professional 24/7 camera, VIVOTEK's Smart Stream II technology enables the IP8166 to optimize quality for a desired region or area and therefore to maximize efficiency of bandwidth usage. The IP8166 can reduce both bandwidth and storage consumption by up to 50%\* while still retaining the same excellent image quality as a Full HD camera.

To meet the demands of diverse scenarios, the IP8166 is compatible with a variety of accessories, from external IR LEDs and enclosures, to long-range solutions and PoE total solutions. With the added support and flexibility of an abundance of professional accessories, the IP8166 is an excellent candidate for your total surveillance solution.

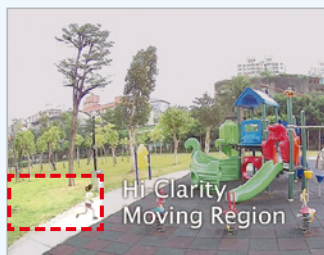
\* Depending on scene being monitored.

### Smart Stream II

Save up to 50% of bandwidth and storage by optimizing quality for moving regions or ROI.



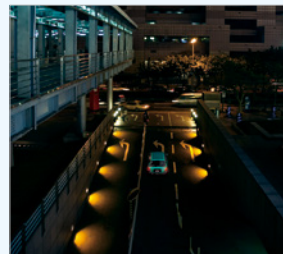
Without Smart Stream II



With Smart Stream II

### Key Features

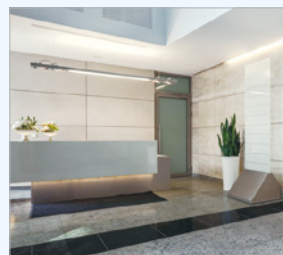
- 2-Megapixel CMOS Sensor
- 30 fps @ 1920x1080
- SNV (Supreme Night Visibility) for Low Light Conditions
- Smart Stream II to Optimize Bandwidth Efficiency
- WDR Enhanced for Unparalleled Visibility in High Contrast Environments
- 3D Noise Reduction for Low-light Conditions
- Video Rotation for Corridor View
- Lens Profile to Ensure the Full Compatibility for Different Lens Options
- Trend Micro IoT Security within Standard Warranty Period



Low Light



Hotel



Lobby

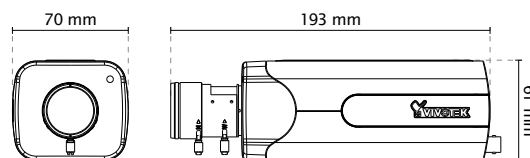


Supermarket

## Technical Specifications

<b>Model</b>	IP8166	<b>Alarm Triggers</b>	Motion detection, manual trigger, digital input, periodical trigger, system boot, recording notification, camera tampering detection, audio detection
<b>System Information</b>		<b>Alarm Events</b>	Event notification using digital output, HTTP, SMTP, FTP, NAS server and SD Card File upload via HTTP, SMTP, FTP, NAS server and SD card
<b>CPU</b>	Multimedia SoC (System-on-Chip)	<b>General</b>	
<b>Flash</b>	128MB	<b>Connectors</b>	RJ-45 cable connector for 10/100Mbps Network/PoE connection Audio input Audio output DC 12V power input AC 24V Power input Digital input*3 Digital output*1 BNC Output RS485
<b>RAM</b>	256MB	<b>LED Indicator</b>	System power and status indicator
<b>Camera Features</b>		<b>Power Input</b>	DC 12V AC 24V IEEE 802.3af PoE Class 0
<b>Image Sensor</b>	1/2.8" Progressive CMOS	<b>Power Consumption</b>	Max. 6.8 W
<b>Maximum Resolution</b>	1920 x1080 (2MP)	<b>Dimensions</b>	193 (D) x 70 (W) x 61 (H) mm
<b>Lens Type</b>	Vari-Focal	<b>Weight</b>	626 g
<b>Focal Length</b>	f= 2.8 ~ 12 mm	<b>Safety Certifications</b>	CE, LVD, FCC Class B, VCCI, C-Tick, UL
<b>Aperture</b>	F1.4 ~ F2.4	<b>Operating Temperature</b>	Starting Temperature: 0°C ~ 50°C (32°F ~ 122°F) Working Temperature: -10°C ~ 50°C (14°F ~ 122°F)
<b>Auto-iris</b>	DC-Iris (P-iris reserved)	<b>Humidity</b>	90%
<b>Field of View</b>	38° ~ 101° (Horizontal) 21° ~ 63° (Vertical) 40° ~ 122° (Diagonal)	<b>Warranty</b>	36 months
<b>Shutter Time</b>	1/5 sec. to 1/32,000 sec.	<b>System Requirements</b>	
<b>WDR Technology</b>	WDR Enhanced	<b>Operating System</b>	Microsoft Windows 7/8
<b>Day/Night</b>	Removable IR-cut filter for day & night function	<b>Web Browser</b>	Internet Explorer 10/11 Chrome version 58.0.3029 or above
<b>Minimum Illumination</b>	0.08 Lux @ F1.4 (Color) 0.001 Lux @ F1.4 (B/W)	<b>Other Players</b>	VLC: 1.1.11 or above Quicktime: 7 or above
<b>Pan/Tilt/Zoom Functionalities</b>	ePTZ: 48x digital zoom (4x on IE plug-in, 12x built in)	<b>Included Accessories</b>	
<b>On-board Storage</b>	Slot Type: SD/SDHC/SDXC card slot Seamless Recording	<b>CD</b>	User's manual, quick installation guide, Shepherd, VAST
<b>Video</b>		<b>Others</b>	Quick installation guide, mounting bracket, screw pack, lens
<b>Compression</b>	H.264 & MJPEG		
<b>Maximum Frame Rate</b>	30 fps@ 1920x1080 In both compression modes		
<b>Maximum Streams</b>	4 simultaneous streams		
<b>S/N Ratio</b>	49 dB		
<b>Dynamic Range</b>	70 dB		
<b>Video Streaming</b>	Adjustable resolution, quality and bitrate Smart Stream II		
<b>Image Settings</b>	Time stamp, text overlay, flip & mirror; Configurable brightness, contrast, saturation, sharpness, white balance, exposure control, gain, backlight compensation, privacy masks; Scheduled profile settings, video rotation, 3DNR, defog, lens profile		
<b>Audio</b>			
<b>Audio Capability</b>	Two-Way Audio (full duplex)		
<b>Compression</b>	G711, G726		
<b>Interface</b>	External microphone input External line output		
<b>Network</b>			
<b>Users</b>	Live viewing for up to 10 clients		
<b>Protocols</b>	IPv4, IPv6, TCP/IP, HTTP, HTTPS, UPnP, RTSP/RTP/RTCP, IGMP, SMTP, FTP, DHCP, NTP, DNS, DDNS, PPPoE, CoS, QoS, SNMP, 802.1X, UDP, ICMP, ARP, SSL, TLS, CIFS/SMB		
<b>Interface</b>	10 Base-T/100 Base-TX Ethernet (RJ-45) *It is highly recommended to use standard CAT5e & CAT6 cables which are compliant with the 3P/ETL standard.		
<b>ONVIF</b>	Supported, specifications available at <a href="http://www.onvif.org">www.onvif.org</a>		
<b>Intelligent Video</b>			
<b>Video Motion Detection</b>	Five-window video motion detection		
<b>Alarm and Event</b>			

## Dimensions



## Compatible Accessories

### Enclosures



**AE-244**  
Camera Enclosure,  
PoE/DC, IR 50M, IP68, IK10,  
-20°C ~ 50°C



**AE-23C**  
Camera Enclosure,  
24VAC/VDC, IP68, IK10,  
-50°C ~ 50°C

### IR Illuminators



**CM4818-2040**  
48W Illuminator, distance 200M,  
-40°C ~ 60°C, 12~24V DC,  
24VAC

### Lens



**AL-242**  
CS mount, 12.5 ~ 50 mm,  
F1.4, P-iris, 1/2.7"



**AL-243**  
CS mount, 7~22 mm,  
F1.4, P-iris, 1/2.7"

### PoE Solution



**AW-GEV-104B-130**  
VivoCam Web Smart 8xGE PoE  
+ 2xGE SFP Switch



**AP-FIC-010A-015**  
Indoor 1xFE IEEE 802.3af  
PoE Injector