



Vivotek **IP Surveillance System**

Network Camera **with Pan/Tilt PT3112/22**

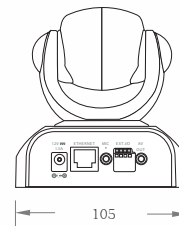
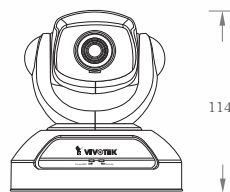
Vivotek MPEG-4 Network Camera with Pan/Tilt, PT 3112/22 is a powerful surveillance system connecting to a Ethernet to provide remote high-quality video and audio. The pan/tilt function that can be controlled through the Internet or the included IR remote control extends the camera practicability and application. Users of Vivotek PT3112/22 can easily access it via an Internet Explorer browser, receiving synchronized video&audio from anywhere anytime.

Features

- MPEG-4 Compression Engine
- Motorized Pant/Tilt (IR Remote Control included)
- Optimal Synchronization of Audio & Video
- UPnP & DDNS Support
- Intelligent Motion Detection
- Pre/Post Alarm Snapshots
- Extended I/O for Sensor & Alarm
- Free-Bundled Recording Software

Technical Specifications

PT3112/22



Model

- PT3112 NTSC CCD
- PT3122 PAL CCD

System

- CPU: Trimedia PNX1300
- RAM: 16MB SDRAM
- ROM: 2MB FLASH ROM

Networking

- Protocol
UPnp, TCP/IP, HTTP, SMTP, FTP, Telnet, NTP, DNS, DDNS and DHCP
- Ethernet
10 baseT or 100 baseT Fast Ethernet auto negotiation

Video

- Algorithm supported
MPEG4(short header mode)
JPEG for still image
- Features
Adjustable image size and quality
Time stamp and text overlay
Three configurable motion detection windows
Flip & mirror
Video output connector
- Resolution
NTSC
Up to 30 frames at 176x120
Up to 30 frames at 352x240
Up to 10 frames at 704x480
PAL
Up to 25 frames at 176x144
Up to 25 frames at 352x288
Up to 10 frames at 704x576

Camera Specifications

- 1/4 inch color CCD image sensor
512(H)x492(V)(PT3112)/512(H)x582(V)(PT3122)
1 Lux / F2.0
AGC, AWB, AES
Electronic shutter:1/60(1/50)~1/100,000sec.

Lens

- Standard CS-mount type, 4.3mm, F2.0

Audio

- 24kbps
- Supporting audio mute

Microphone

- Omni-directional
- Frequency
20 ~ 20000Hz
- S/N ratio
More than 58dB

General I/O

- 1 sensor input max. 12VDC 50mA
- 1 relay output max. 24VDC 1A / 125VAC 0.5A

Pan/Tilt

- Pan: range $\pm 135^\circ$, $10^\circ \sim 50^\circ/\text{sec}$
- Tilt: range $+90^\circ \sim -45^\circ$, $7^\circ \sim 25^\circ/\text{sec}$
- Auto pan mode
- Auto patrol mode

LED Indicators

- System power and status indicators
- System activity and Network link indicators

Dimension

- Length: 105mm
- Width: 105mm
- Height: 114mm

Weight

- NET. 395g

Power

- Consumption:
PT3113/3123: near 7.9W
- Input: 100-240VAC, 50/60Hz, 0.4A
- Output: 12VDC, 1.5A

Operating Environment

- Temperature: 0~50°C(32~122°F)
- Humidity: 95% RH

EMI & Safety

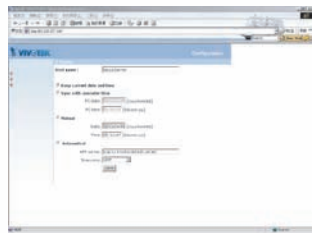
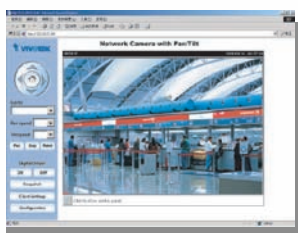
- CE, FCC

Viewing System Requirement

- Operation system: Microsoft Windows98 SE, ME, 2000, XP
- Browser: Internet Explorer 5.0 or above

Free Bundled ST3402 Software

- Remote configuration and control sixteen devices
- Event-triggered, scheduled, manual recording
- Instant search with preview windows
- Fast/slow forward replay and pause
- Hard disk quota warning
- Scheduled record
- AVI format export



All specifications are subject to change without notice.
All other trademarks are owned by their respective companies.



VIVOTEK INC.
6F., No.192, Lien-Cheng Rd.,
Chung-Ho, Taipei County, Taiwan
Tel: +886 2 82455282
E-mail: sales@vivotek.com
Web: www.vivotek.com

