



## **S** SD9366-EH Kit **S** SD9366-EHL Kit

H.265 IR PTZ Dome &  
Outdoor PoE Injector



1080p 60 fps • 30x Zoom • 150M/250M IR • IP66 • IK10 •  
NEMA 4X • -50°C ~ 55°C • Wiper

The SD9366-EH/EHL is the latest professional speed dome camera with wiper from VIVOTEK, specifically designed to enhance low light surveillance in large coverage areas. Equipped with 250M/150M IR illuminators and a 30x optical zoom lens, the SD9366-EH/EHL provides a superb low light image in the most challenging situations. The camera also adopts VIVOTEK's latest IR technology, VAIR (Vari-Angle IR). VIVOTEK's VAIR provides smooth vari-angle adjustment of the IR illuminators, allowing broad coverage FOV and highly uniform IR intensity while avoiding hot-spots traditionally associated with IR illumination.

The SD9366-EH/EHL is the PTZ surveillance camera with IR Illumination to utilize H.265 compression technology. When combined with VIVOTEK's Smart Stream II technology users can obtain bandwidth savings of up to 80%\* compared to traditional H.264. By combining 1080p full HD resolution with H.265, IR illuminators, VAIR, WDR, and 30x optical zoom, the SD9366-EH/EHL is able to capture fine details at top-notch quality, 24 hours a day, 7 days a week.

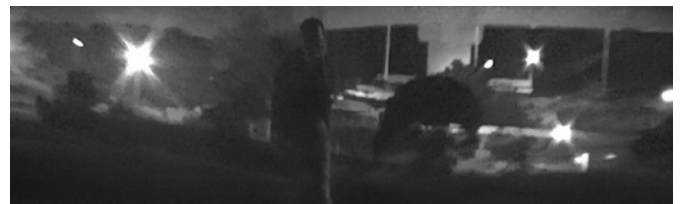
VIVOTEK further strengthened the camera performance with an IP66- and NEMA 4X-rated housing to protect the camera against rain, dust, and corrosion. The SD9366-EH/EHL has a wide operating temperature range from -50°C to 55°C, ensuring continuous operation under the most extreme weather conditions and hazardous environments. This makes the SD9366-EH/EHL ideally suited to monitor wide open spaces such as ports, highways, cities, and parking lots where high-level precision is required.

VIVOTEK's SD9366-EH/EHL is now available in a bundle kit that includes outdoor PoE injector AP-GIC-015B-095, a 95W outdoor-ready unit designed with a weatherproof IP67 and vandal-proof IK10 rated housing. This outdoor bundle helps users to reduce installation time and hardware costs.

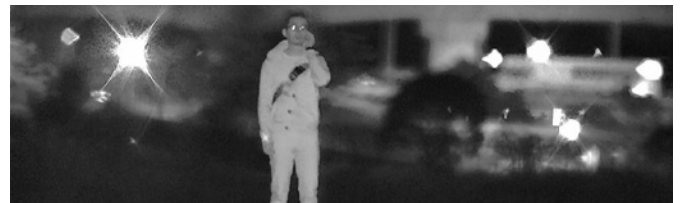
\* Depending on scene.

### Key Features

- Real-time H.265, H.264 and MJPEG Compression (Triple Codec)
- 60 fps @ 1080p Full HD
- 30x Zoom Lens
- 150M/250M IR with VAIR (Vari-Angle IR)
- WDR Pro for Unparalleled Visibility in High Contrast Environments
- Weather-proof IP66, Vandal-proof IK10 and NEMA 4X-rated Housing
- -50°C ~ 55°C Wide Temperature Range for Extreme Weather Conditions (AC 24V/ PoH)
- Smart Stream II to Optimize Bandwidth Efficiency
- EIS
- Easy Cleaning with Built-in Wiper

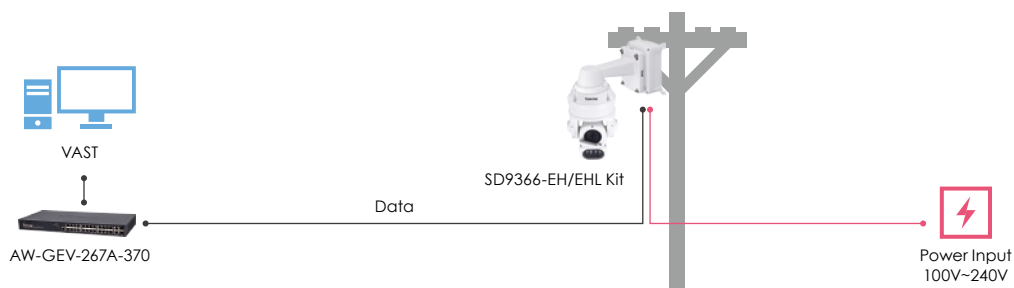


Without VAIR








With VAIR

## Application



## Ordering Information

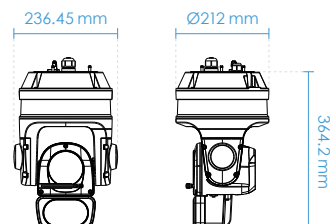
Outdoor PoE Injector Solution	IP Camera	Outdoor PoE injector	IP Camera	Outdoor PoE injector
	P/N: 199003100G		P/N: 199003200G	
	 SD9366-EHL 30x, 1080P, IR Speed Dome, 250M IR, IP66, IK10	 + AP-GIC-015B-095 Outdoor 95W PoE injector with adapter, IP67, IK10	 SD9366-EH 30x, 1080P, IR Speed Dome, 250M IR, IP66, IK10	 + AP-GIC-015B-095 Outdoor 95W PoE injector with adapter, IP67, IK10

## Technical Specifications

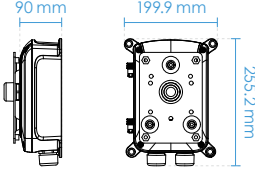
Model	SD9366-EH: 250M VAIR SD9366-EHL: 150M VAIR	Day/Night	Yes
<b>System Information</b>		Removable IR-cut filter	Yes
CPU	Multimedia SoC (System-on-Chip)	IR Illuminators	SD9366-EH: Built-in IR Illuminators up to 250 meters with VAIR, IR LED*2 SD9366-EHL: Built-in IR Illuminators up to 150 meters with VAIR, IR LED*2
Flash	128MB	Minimum Illumination	SD9366-EH: 0.07 Lux @ F1.6 (Color) 0.01 Lux @ F1.6 (B/W) 0 Lux with IR illumination on SD9366-EHL: 0.42 Lux @ F1.6 (Color) 0.01 Lux @ F1.6 (B/W) 0 Lux with IR illumination on
RAM	512MB	Pan Speed	0.1° ~ 300° / sec
<b>Camera Features</b>		Pan Range	360° endless
Image Sensor	SD9366-EH: 1/2.8" Progressive CMOS SD9366-EHL: 1/3" Progressive CMOS	Tilt Speed	0.1° ~ 300° / sec
Max. Resolution	1920x1080	Tilt Range	220° (-110° ~ +110°)
Lens Type	30x Optical Zoom, Auto Focus	Preset Locations	256 preset locations 128 presets per tour
Focal Length	f = 4.3~129 mm (30x zoom)	Pan/Tilt/Zoom Functionalities	SD9366-EH: 48x digital zoom (4x on IE plug-in, 12xbuilt-in), Auto pan mode, Auto patrol mode SD9366-EHL: 128x digital zoom (4x on IE plug-in, 32x built-in), Auto pan mode, Auto patrol mode
Aperture	F1.6 ~ F4.7		
Iris type	DC-Iris		
Field of View	2.3° ~ 64° (Horizontal) 1.3° ~ 36° (Vertical) 2.6° ~ 73° (Diagonal)		
Shutter Time	SD9366-EH: 1 sec. to 1/10,000 sec. SD9366-EHL: 1/8 sec. to 1/30,000 sec.		
WDR Technology	WDR Pro		

## Technical Specifications

On-board Storage	Slot type: Micro SD/SDHC/SDXC card slot Seamless Recording
<b>Video</b>	
Compression	H265, H264, MJPEG
Maximum Frame Rate	H.265 & H.264: 60 fps @ 1920x1080 MJPEG: 30 fps @ 1920x1080
Maximum Streams	4 simultaneous streams
S/N Ratio	SD9366-EH: 62 dB SD9366-EHL: 54 dB
Dynamic Range	SD9366-EH: 120 dB SD9366-EHL: 110 dB
Video Streaming	Adjustable resolution, quality and bitrate Smart Stream II
Image Settings	Adjustable image size, quality and bit rate; Time stamp, text overlay, flip & mirror; Configurable brightness, contrast, saturation, sharpness, white balance, exposure control, gain, backlight compensation, privacy masks (Up to 24); Scheduled profile settings, defog, 3DNR, EIS, HLC
<b>Audio</b>	
Audio Capability	Two-way Audio
Compression	G.711, G.726
Interface	External microphone input External line output
<b>Network</b>	
Users	Live viewing for up to 10 clients
Protocols	IPv4, IPv6, TCP/IP, HTTP, HTTPS, UPnP, RTSP/ RTP/RTCP, IGMP, SMTP, FTP, DHCP, NTP, DNS, DDNS, PPPoE, CoS, QoS, SNMP, 802.1X, UDP, ICMP, ARP, TLS, NTCIP
Interface	10 Base-T/100 Base-TX Ethernet (RJ-45) *It is highly recommended to use standard CAT5e & CAT6 cables which are compliant with the 3P/ETL standard.
ONVIF	Supported, specification available at <a href="http://www.onvif.org">www.onvif.org</a>
<b>Intelligent Video</b>	
Video Motion Detection	Five-window video motion detection
Auto-Tracking	Auto-tracking on moving object
<b>Alarm and Event</b>	
Alarm Triggers	Motion detection, manual trigger, digital input, periodical trigger, system boot, recording notification, camera tampering detection, audio detection
Alarm Events	Event notification using digital output, HTTP, SMTP, FTP, NAS server and Micro SD card File upload via HTTP, SMTP, FTP, NAS server and Micro SD card
<b>General</b>	

Connectors	RJ-45 cable connector for Network 10/100 Mbps PoE connection*1 Audio input*1 Audio output*1 AC/DC 24V power input*1 Digital input*4 Digital output*2 RS-485 for PTZ control (PelcoD protocol, Baud rate 2400)*1
LED Indicator	System power and status indicator
Power Input	PoH/PoE (95W) AC/DC 24V
Power Consumption	PoH/PoE (95W): Max. 70 W (Heater on) Max. 51 W (Heater off) AC/DC 24V: Max. 63 W (Heater on) Max. 45 W (Heater off)
Dimensions	236.45 x 364.2 mm
Weight	5,700 g
Casing	IP66, IK10, NEMA 4X
Safety Certifications	CE, FCC Class A, VCCI, C-Tick, NEMA 4X, UL
Operating Temperature	Starting Temperature: -40°C ~ 55°C (-40°F ~ 131°F) Working Temperature: -40°C ~ 55°C (-40°F ~ 131°F), DC 24V power input -50°C ~ 55°C (-58°F ~ 131°F), AC 24V/ PoH(95W) power input *Wiper is functional at 10°C to 55°C (50°F to 131°F)
Humidity	98%
Warranty	36 months
<b>System Requirements</b>	
Operating System	Microsoft Windows 8/7
Web Browser	Mozilla Firefox 7~43 (streaming only) Internet Explorer 10/11
Other Players	VLC: 1.1.11 or above Quicktime: 7 or above
<b>Included Accessories</b>	
CD	User's manual, quick installation guide, Shepherd, VAST
Others	Wall mount bracket, screws, waterproof connectors, terminal blocks, quick installation guide, warranty card, alignment sticker, ground wire, T25 star driver, software CD, desiccant bags, I/O cable
<b>Dimensions</b>	
	

## Technical Specifications

Model	AP-GIC-015B-095	Waterproof	IP67
<b>PoE Function</b>		Vandal Proof	IK10
Max. PoE Output Power/ per Port	54VDC/95W	Operating Temperature	-40°C ~ 60°C (-40°F ~ 140°F)
Power Pin Assignment	1/2(-), 3/6(+), 4/5(+), 7/8(-)	<b>Dimensions</b>	
<b>General</b>			
Power Input	100~240VAC / 50~60Hz		
Power Consumption	100W		
Surge Protection Data/ PoE port	12 KV		
Surge Protection AC Power	10 KV		

## Compatible Accessories

### Others



AJ-001  
USB Joystick



AJ-002  
USB Joystick