



Vivotek **IP Surveillance System**

Video Server VS2101

VS2101 is an ideal and compact solution delivering high quality compressed video at real-time frame rate. The industrial-standard design well suits for video monitoring and surveillance over LAN or WAN. With flexible peripheral support, users can remotely monitor and control the security application by means of standard web browsers.

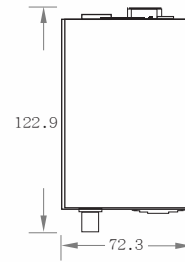
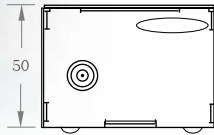
It is the smart choice to drop the messy combo of PC, complicated software and low-quality capture card. Vivotek's IP surveillance technology offers more future-proof and cost-effective solutions to help you migrating from analog to digital in a smooth way.

Features

- **Easy web access via popular browsers**
- **Familiar wizard assistance**
- **Real-time performance with options of size and quality**
- **Built-in motion detection**
- **WAN support via external modem**
- **Multiple PTZ camera support with flexible interface**
- **Extension for sensor and alarm**
- **Development kit for system integrators**

Technical Specifications

VS2101



System

- CPU: Trimedia PNX1300
- RAM: 16MB SDRAM
- ROM: 2MB FLASH ROM

Networking

- Protocol
TCP/IP, HTTP, SMTP, FTP, Telnet, NTP, DNS and DHCP
- Modem
PPP(dial-up, direct cable connection)
- Ethernet
10 baseT or 100 baseT Fast Ethernet auto negotiation

Video

- Algorithm supported
MJPEG
- Video I/O
1 analog video input
- Features
Adjustable image size and quality
B/W or color control
Time stamp and text overlay
- Resolution
NTSC
Up to 30 frames at 176x112
Up to 30 frames at 352x240
Up to 9 frames at 704x480
PAL
Up to 25 frames at 176x144
Up to 25 frames at 352x288
Up to 8 frames at 704x576

Serial Port

- 9 pin D-SUB RS232 or RS485
(PTZ camera control or modem)
max.115.2kbps

General I/O

- 1 sensor input max.12VDC 50mA
- 1 relay output max. 24VDC 1A / 125VAC 0.5A

LED Indicators

- Network indicator
- Heartbeat indicator
- Status indicator

Dimension

- Length: 122.9mm
- Width: 72.3mm
- Height: 50mm

Weight

- NET .340g

Power

- Consumption: near 4.2W
- Input: 100-240VAC, 50/60Hz, 0.4A
- Output: 12VDC, 1.5A

Operating Environment

- Temperature: 0-50°C(32-122°F)
- Humidity: 95% RH

EMI & Safety

- CE, FCC

Security

- Administrator and user group protected
- Password authentication
- Demo account with limitation by administrator

Pan/Title/Zoom

- Multiple PTZ camera control through RS232 or RS485
- Currently supported devices and protocols
Sony VISCA, Canon VCC1,VCC3,VCC4
DynaDome/SmartDome/Pelco D protocol/
LiLin PIH-7x00, Ernitec
- Custom Camera is support
- CGI command serial driver is supported

Alarm Features

- Motion detection with percentage and sensitivity
- Weekly repeat timing schedule
- 3 color images per camera for pre/post alarm
- Automatic transfer of stored images via email or FTP

Development Kit

- Open ActiveX control

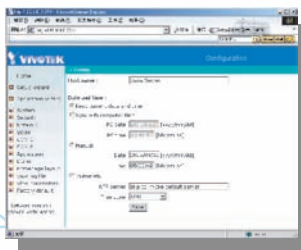
Viewing System Requirement

- Internet Explorer 5.0 or above;
Netscape Navigator 4.x or above

Free Bundled ST2202 Software

- Remote configuration and control
- Event-triggered, scheduled, manual recording
- Instant search with preview windows
- Fast/slow forward replay and pause
- Hard disk quota warning
- Scheduled backup
- AVI format export

*All specifications are subject to change without notice.
All other trademarks are owned by their respective companies.*



VIVOTEK INC.
6F.,No.192,Lien-Cheng Rd.,
Chung-Ho,Taipei County,Taiwan
Tel:+886 2 82455282
E-mail:sales@vivotek.com
Web:www.vivotek.com

