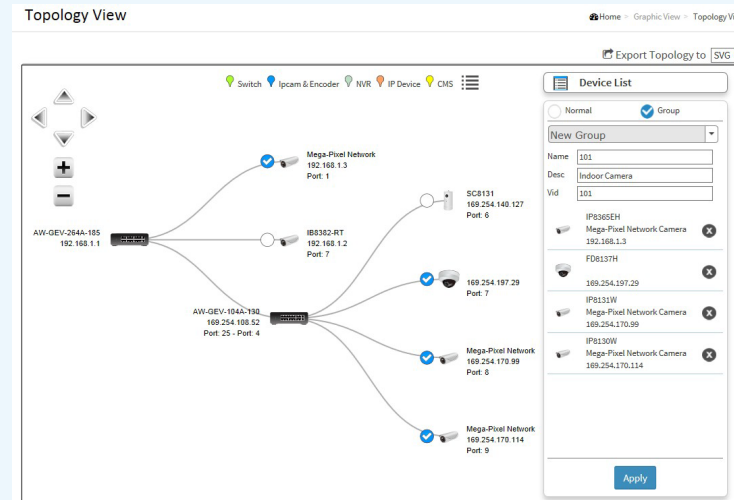


VLAN Setting

Through the auto generate network topology map, it allows user can quickly to setup VLAN group in all VivoCam Switches network.



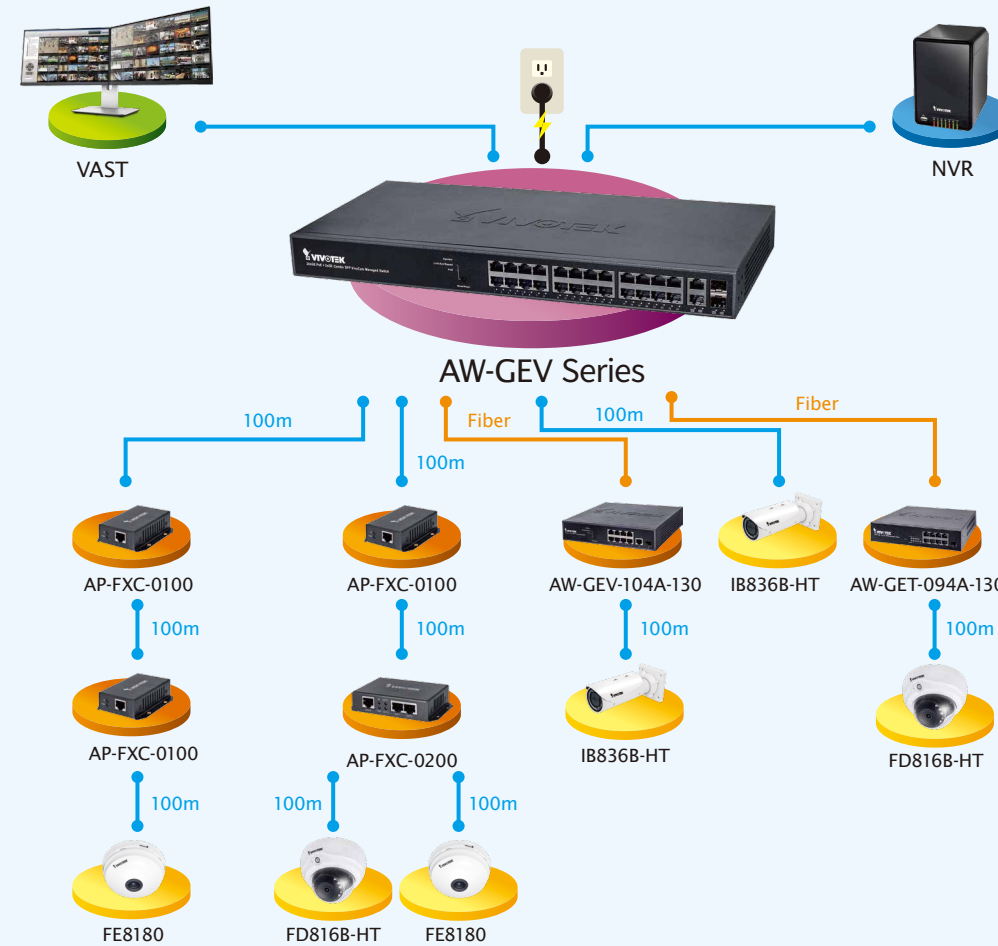
Port Security by Specific MAC

Enable MAC lock function to prevent unwanted connection from unknown devices.

PoE Management

Provides useful PoE management tools in topology view, such as PoE on/off configuration, powered device alive checking.

Application



Ordering Information

Model Name	Product Description
VivoCam PoE Switch	
AW-GEV-104A-130	VivoCam L2 Managed PoE Switch 8xGE PoE + 1xGE UTP + 1xGE SFP, 130W
AW-GEV-264A-185	VivoCam L2 Managed PoE Switch 24xGE PoE + 2xCombo GE, 185W
AW-GEV-264A-370	VivoCam L2 Managed PoE Switch 24xGE PoE + 2xCombo GE, 370W
Web Smart PoE Switch	
AW-GET-094A-130	Web Smart 8xGE PoE +1xGE SFP Switch, 130W
PoE Extender	
AP-FXC-0100	1-Port Indoor FE PoE Extender
AP-FXC-0200	2-Port Indoor FE PoE Extender
IP Surveillance Device	
Network Camera	All VIVOTEK Network Cameras
Video Server	All VIVOTEK Video Servers
NVR	All VIVOTEK NVRs
CMS	VAST

VIVOTEK INC.

6F, No.192, Lien-Cheng Rd., Chung-Ho, New Taipei City, 235, Taiwan, R.O.C. | T: +886-2-82455282 | F: +886-2-82455532 | E: sales@vivotek.com | www.vivotek.com

VIVOTEK



AW-GEV Series VivoCam L2 Managed PoE Switch
World's first PoE switch with IP surveillance management functions

The VIVOTEK AW-GEV series, referred to as VivoCam PoE switch, is the world's first PoE switch with IP surveillance management functions. This switch is not only a standard L2 PoE switch, but also able to set up and configure VIVOTEK IP Cameras, Video Server, NVR and CMS. Using AW-GEV series, the VivoCam PoE switch allows users to find all VIVOTEK devices and deploy a surveillance network system automatically.

Product Information

AW-GEV Series

VivoCam Layer 2 Managed PoE Switch



Managing IP Surveillance

- The Root VivoCam Will Auto-Sync With All Sub VivoCam Switches.
- Auto Discovery and Classification of VIVOTEK Devices.
- Auto Generated Topology View can monitor and configure all devices ,VLAN and PoE On/Off.
- Batch Camera/Video Server Firmware Upgrade, Config-File and Login Password Configuration
- Display IP Camera Live Stream in Topology View, Floor View and Google Map View
- Supports Surveillance QoS & MAC-Lock by single button

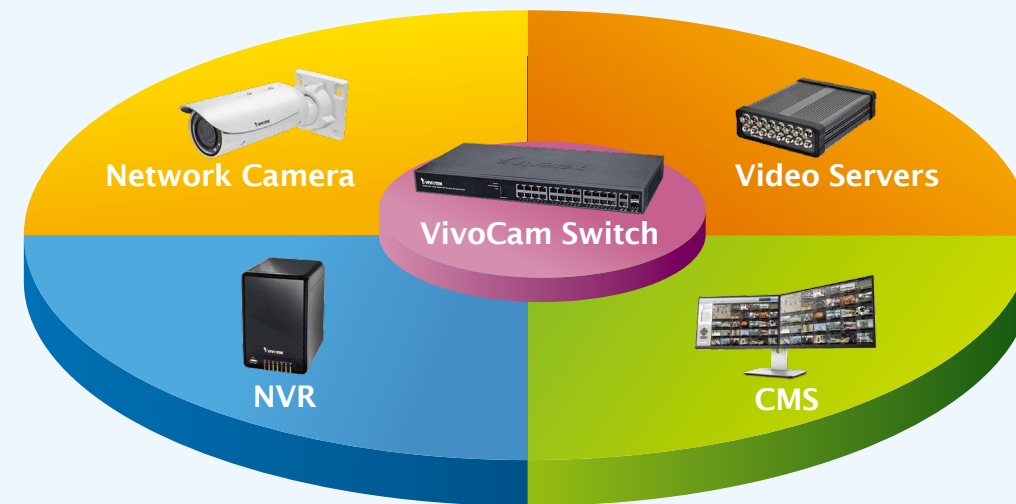
Managed L2 PoE Switch

- Supports L2 plus Management and IPv4 static route
- Supports DHCP Server & Client
- Supports IPv4 and IPv6 protocol
- Supports Loop Detection for Maintenance
- Supports 802.1d (STP), 802.1w (RSTP) and 802.1s (MSTP)
- Supports SNMP v1/v2c/v3 for Management
- Supports Ethernet Cable Length measurement
- Dual firmware design, easy to upgrade or select firmware version
- Supports IEEE 802.3at PoE standard, up to 30W PoE per port

Managing IP Surveillance

Surveillance Management

The AW-GEV series is specifically designed for surveillance applications. It comes with an integrated surveillance interface to easily configure all VIVOTEK devices, such as network cameras, NVR, video servers and CMS.



Auto Discovery

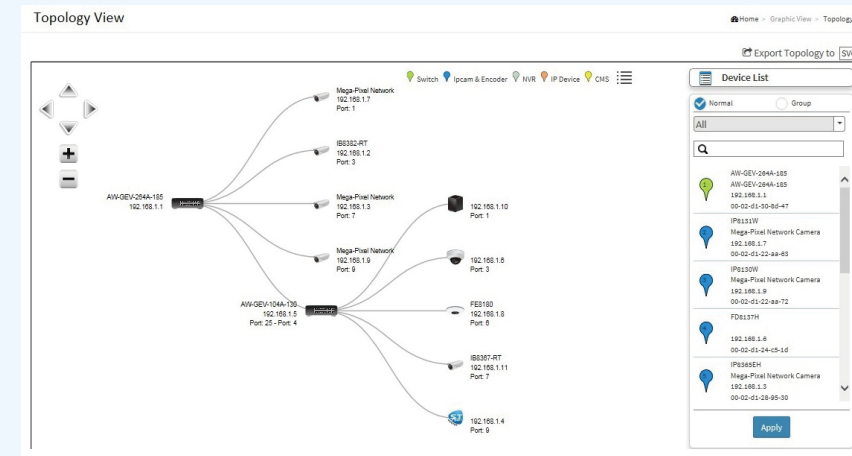
AW-GEV series can automatically discover and classification any VIVOTEK's devices such as network cameras, video servers and NVR with a simple click of mouse.

Select	Status	Model Name	Device Name	MAC	IP Address	IP State	Version
<input type="checkbox"/>	On Line	IP8162	Mega-Pixel Network Camera	00-02-01-26-01-68	169.254.1.104	Static	0200d
<input type="checkbox"/>	On Line	CC8130	CC8130	00-02-01-10-21-83	169.254.33.131	Static	0201a
<input type="checkbox"/>	On Line	IB8369	IB8369	00-02-01-35-2D-E8	169.254.45.232	Static	0101a1
<input type="checkbox"/>	On Line	IP8371E	IP8371E	00-02-01-29-40-8F	169.254.64.143	Static	0301b
<input type="checkbox"/>	On Line	FD816C-HSF2	FD816C-HSF2	00-02-01-39-5C-EE	169.254.92.238	Static	0100w_2
<input type="checkbox"/>	On Line	IP8337H	IP8337H-C	00-02-01-25-BA-95	169.254.186.149	Static	0100f
<input type="checkbox"/>	On Line	FD8151V	Mega-Pixel Network Camera	00-02-01-27-C4-50	169.254.196.80	Dynamic	0103a
<input type="checkbox"/>	On Line	FE8171		00-02-01-15-D7-41	192.168.40.11	Dynamic	0101c
<input type="checkbox"/>	On Line	FD8168-S	Mega-Pixel Network Camera	00-02-01-19-00-C6	192.168.40.12	Dynamic	0100b6

E-map

Topology View

Auto-generated Topology View allows administrators to quickly view and export a complete network topology in SVG/PNG/PDF format for easier inspection and planning.



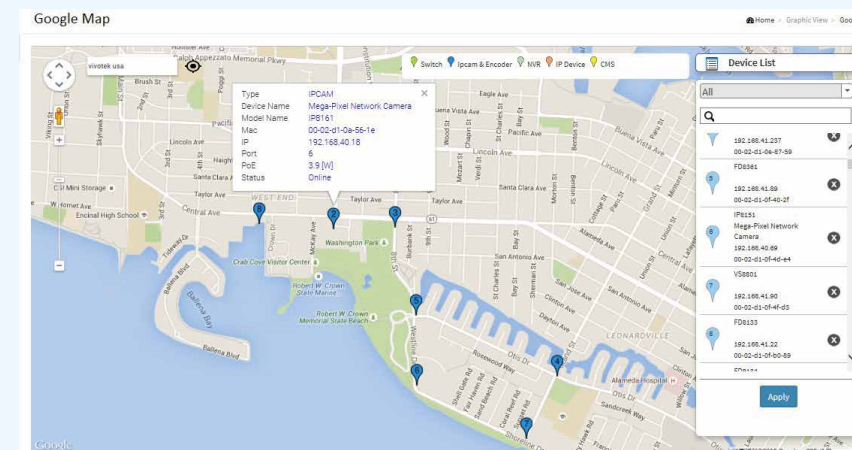
Floor View

Upload custom floor images. Floor View allows for quick location of deployed surveillance devices and for export of this view in SVG/PNG/PDF format for easier inspection and planning.



Google Map

Locate surveillance devices on Google map to simplify multi-site management of any large scale deployments.



Device Management and Live Streaming

Easy Network Configuration, Open Device Web UI, Restore Default, Reboot, Check Device Cable Connection and Display Live Stream, Online/Offline status , PoE consumption, PoE on/off control, PoE Alive Check.



Traffic Monitor

Auto-generated comprehensive chart to show all VivoCam switches port-by-port network traffic status.



Trouble Shooting

The Device Status page to show the real-time verification result of each connection between switch port and surveillance device.

Select	Status	Model Name	Device Name	MAC	IP Address	Version
<input type="checkbox"/>	Online	IP8151		00-02-01-06-87-59	192.168.41.237	0400a

IP Address	Device Name	MAC	Status
192.168.41.211	00-02-01-32-99-5b	00-02-01-32-99-5b	Connection: Cable status: ●
192.168.41.249	00-02-01-00-96-2a	00-02-01-00-96-2a	Connection: Cable status: ●
192.168.41.250	00-02-01-00-93-9b	00-02-01-00-93-9b	Connection: Cable status: ●
192.168.41.237	00-02-01-06-87-59	00-02-01-06-87-59	Connection: Cable status: ●