

Installation Guide

Revision History:

Rev. 1.0: Initial release

Corresponding part numbers:

AM-411: 900003003G (v04)
900003004G (v05)

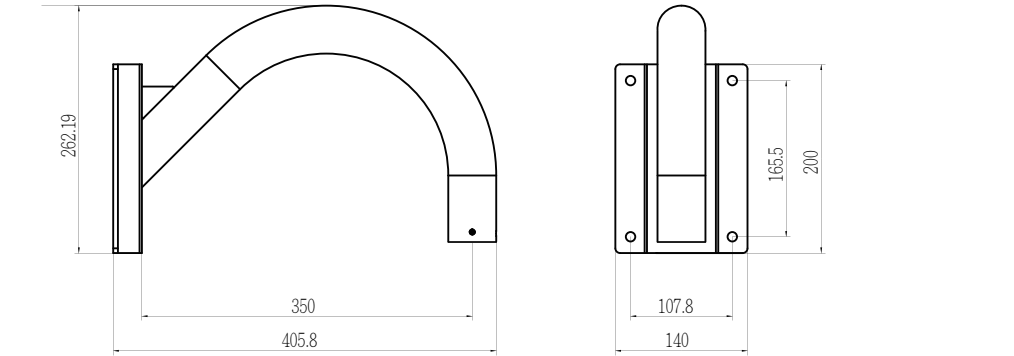
AM-711: 900005100G
AM-221: 900014800G
AM-212: 900004202G

I Compatible VIVOTEK Cameras

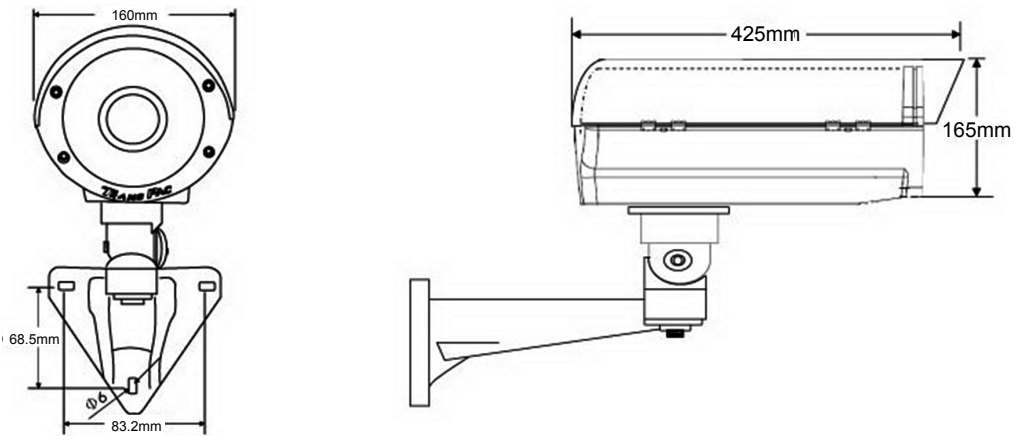
Type	Compatible cameras/brackets	Brackets
A	AM-212/221, SD8363E, SD8364E, SD83x4E, SD83x6E, SD8333E, w/ AM-519 (900014900G)	AM-311/411/711
B	AE2000/ AE234/ 235/ 211/ 232/ 233	AM-311/411/711
C	Medium Bullet, see below for compatibility.	AM-311/411
D	Large Bullet, see below for compatibility.	AM-311/411

AM-411 Support List		
Large Bullet	Medium Bullet	Ball swivel bracket
V04: 900003003G		
IP8371E	IP8335H	
IP8372	IP8362	
IB8373-EH		
IP8355EH		
IP8365EH		
V05: 900003004G (V05 is backward compatible with the bullets supported by V04)		
IB8381-E		IP8364-C
		IP8337H-C
		IB8354-C
		IB8367(-R)
		IB8338-H(R)

AM-221 Gooseneck

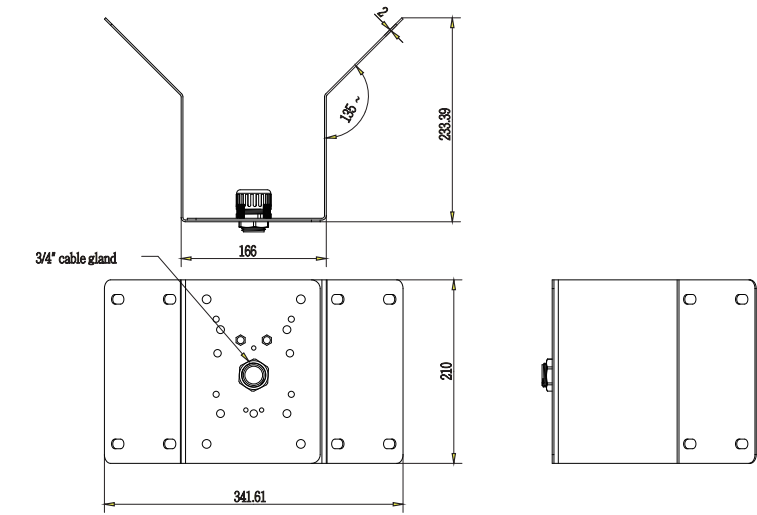


AE20xx Series Enclosure

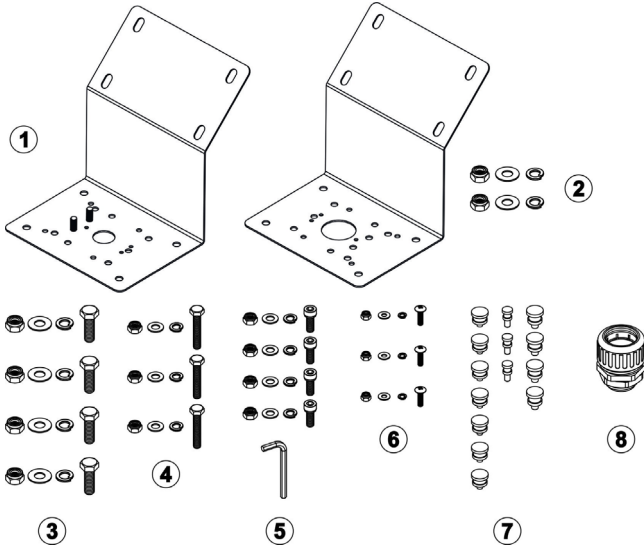


II Mechanical Drawings

AM-411 Corner mount bracket



Package Contents	
Items	1. Corner mount brackets, 2. Screws for combining the corner mount brackets, 3. M8X25mm screws, 4. M6X35mm screws, 5. M6X20 screws, 6. M4X15 screws, 7. silicone plugs, 8. 3/4" waterproof corrugated tubing fittings
Box Net Weight	2.9 kgs each box
Box Gross Weight	7.75 kgs 2 boxes in one carton
Outer carton Dimensions	455 x 285 x 365mm



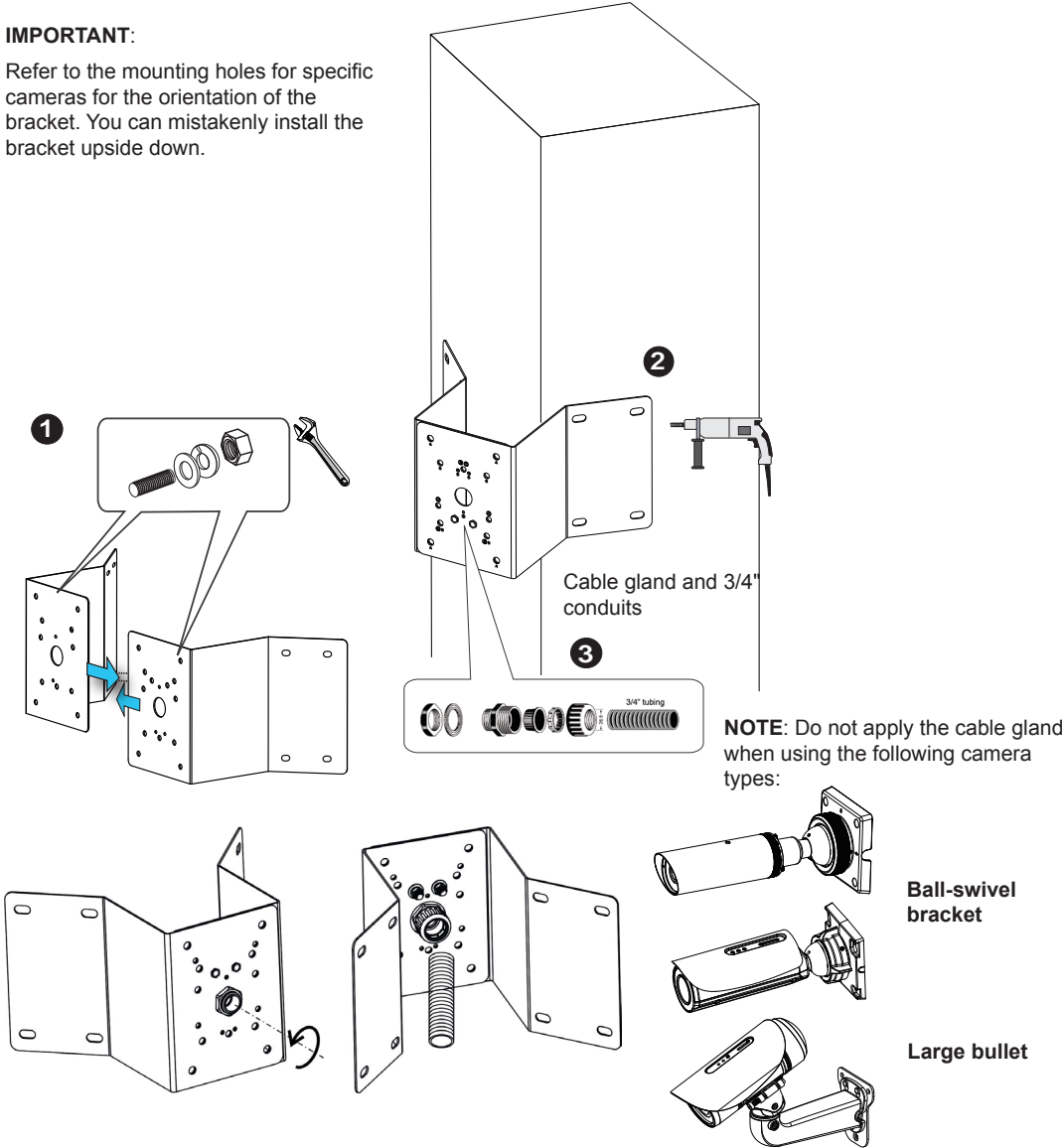
III Installation

III-1. Corner mount installation: AM-411

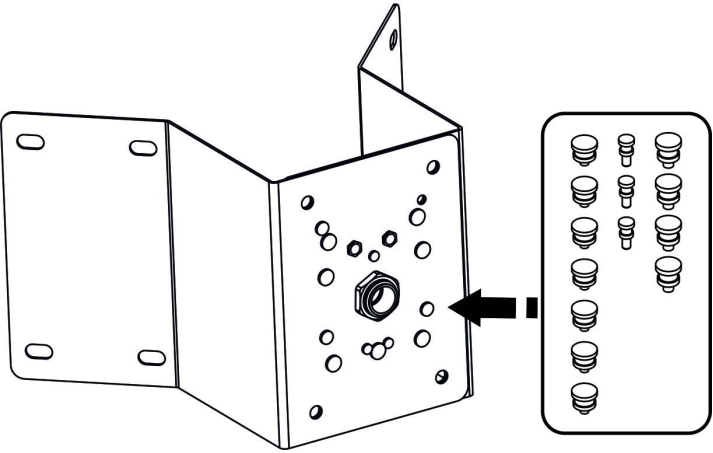
- Below is a general, sample procedure using a Corner mount bracket:
- Combine the two brackets together using the included nuts and washers.
 - Align the assembled brackets with the desired position. Align screw holes on the brackets against the wall. Drill holes on the wall for securing the bracket and for routing the cables. Hammer anchors into the wall. Wall anchors are user-supplied.
 - Route power lines and other cables through the included cable gland, conduits (separately purchased), and install the cable gland to the brackets' through the hole in the center. For cabling details, refer to the documentation that came with your accessories or network camera.

IMPORTANT:

Refer to the mounting holes for specific cameras for the orientation of the bracket. You can mistakenly install the bracket upside down.



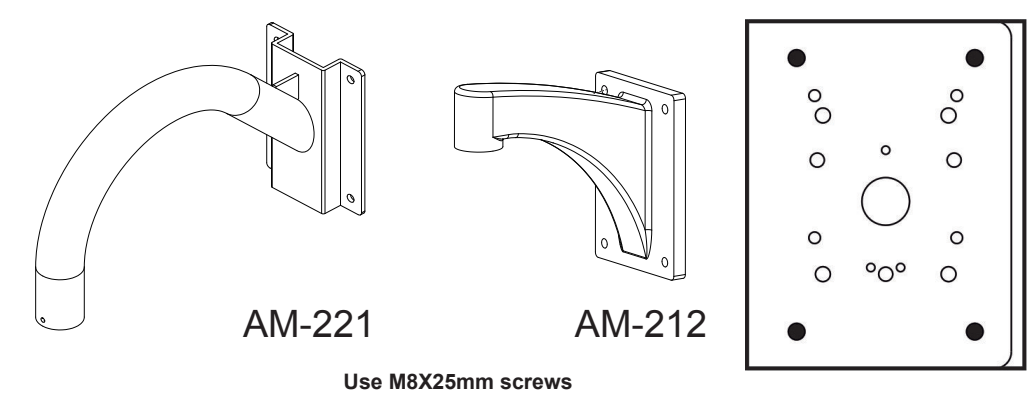
Fill the unused holes on the bracket using the included silicone stoppers. Please check the following drawings for the mounting holes and the unused holes for your models.



III-3. Goose neck installation: AM-221 and AM-212

Align the mounting holes on the bracket with the mounting holes (as shown in the drawing), and secure it using the included hex bolts, washers, and nuts. The enclosure is mounted later after its wall-mount bracket is securely attached.

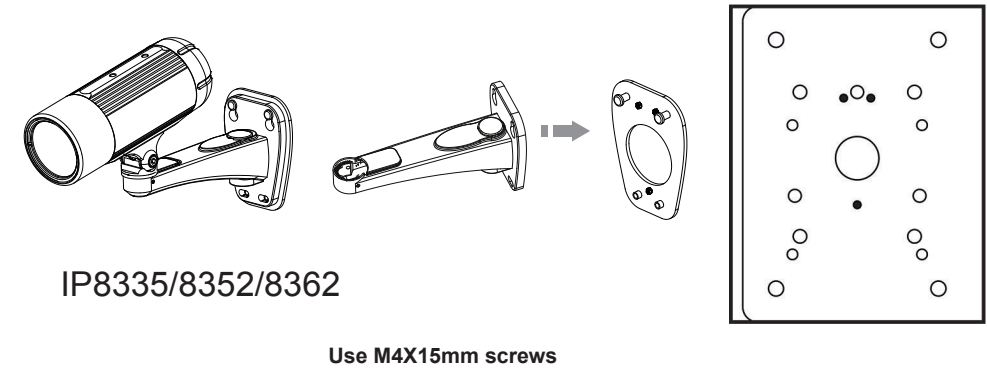
Align the mounting holes on the bracket with the mounting holes, and secure it using the included hex bolts, washers, and nuts.



NOTE: There is no need to apply silicone stoppers to the AM-221.

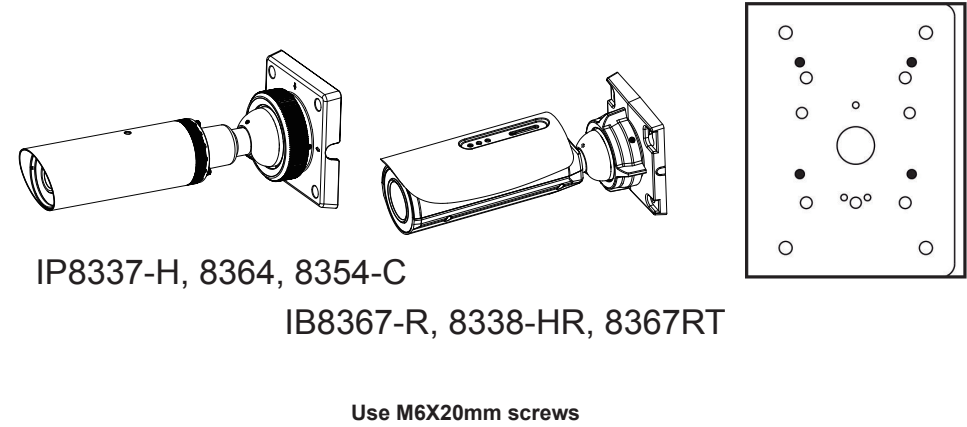
III-6. Camera installation - Medium Bullet: IP8335/8352/8362

Align the mounting holes on the bracket with the mounting holes (as shown in the drawing), and secure it using the included hex bolts, washers, and nuts.



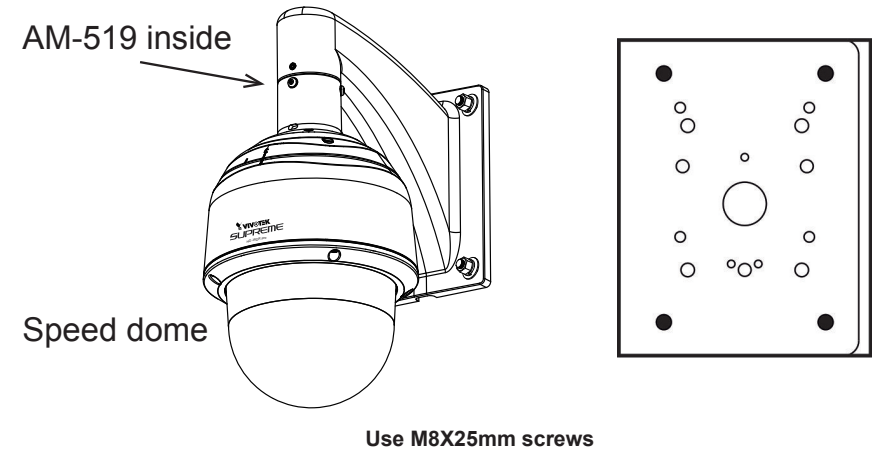
III-7. Camera installation - Medium Bullet: IP8337-H/8364/8364-C, IB8367-R, 8338-HR, 8367-RT

Align the mounting holes on the bracket with the mounting holes (as shown in the drawing), and secure it using the included hex bolts, washers, and nuts.



III-4. Speed dome installation: SD83xx Series

Align the mounting holes on the bracket with the mounting holes (as shown in the drawing), and secure it using the included hex bolts, washers, and nuts.



III-5. AE series enclosure installation: AE2000 and others



III-8. Camera installation - Large Bullet: IP8371E, IP8372, IB8373-EH, IB8381(-E), IP8355(E)H, IP8365(E)H, IP8335H, IP8362

Align the mounting holes on the bracket with the mounting holes (as shown in the drawing), and secure it using the included hex bolts, washers, and nuts. Refer to the camera's documentation for the rest of the details.

