



VIVOTEK

Network Camera **IP2112 、 IP2122**

Quick Installation Guide

This guide describes the basic functions of IP2112 、 IP2122.

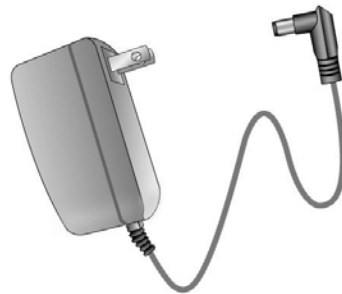
All detailed information is described in the user's manual.

1 Check package contents

● IP2112、IP2122



● Power adapter



● Camera stand



● I/O connector (attached), wrench and CS ring



● Software CD



● Quick installation guide

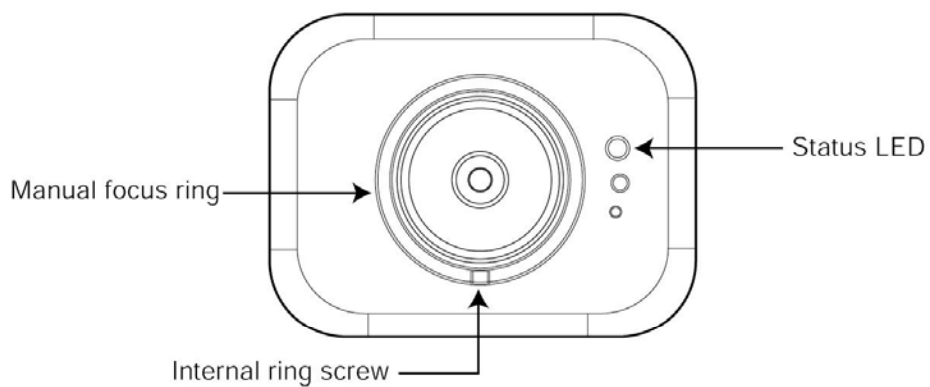


● Warranty card

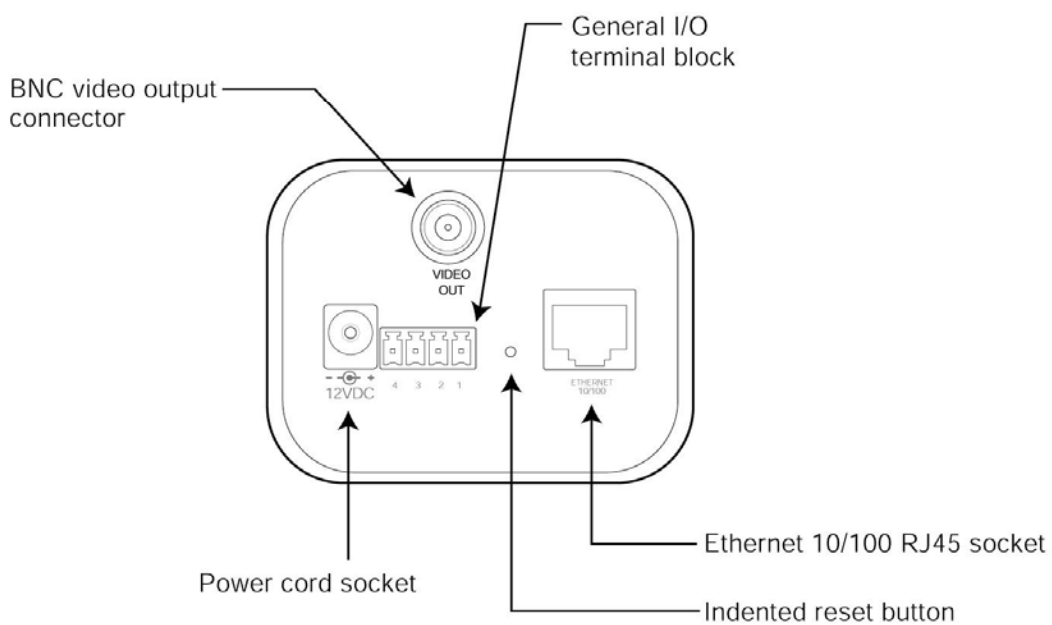


2 Physical description

● Front panel

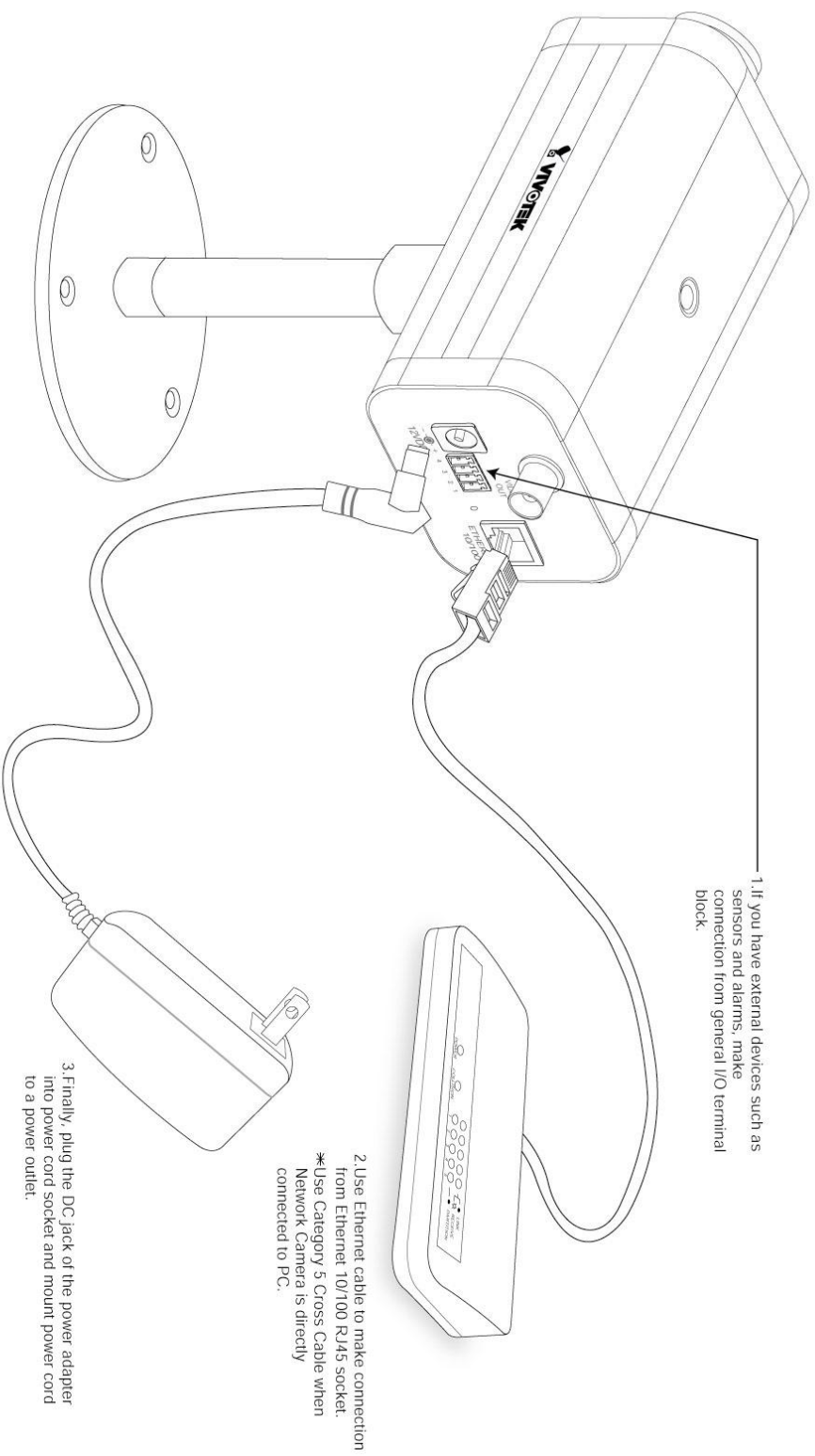


● Back panel



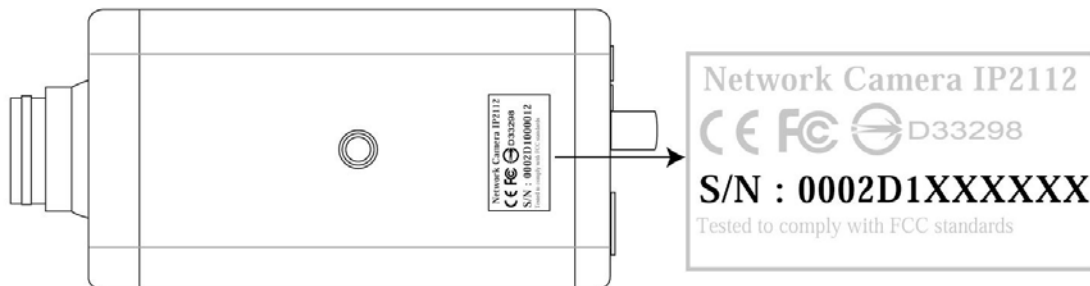
3 Make connections

● Install your Network Camera in Ethernet network



4 Assign IP address

- A** Note the serial number from the label on the unit.



This serial number is the same as Ethernet address,
for example: 0002D1000012=00-02-D1-00-00-12

B Assign IP address

- Using Installer program

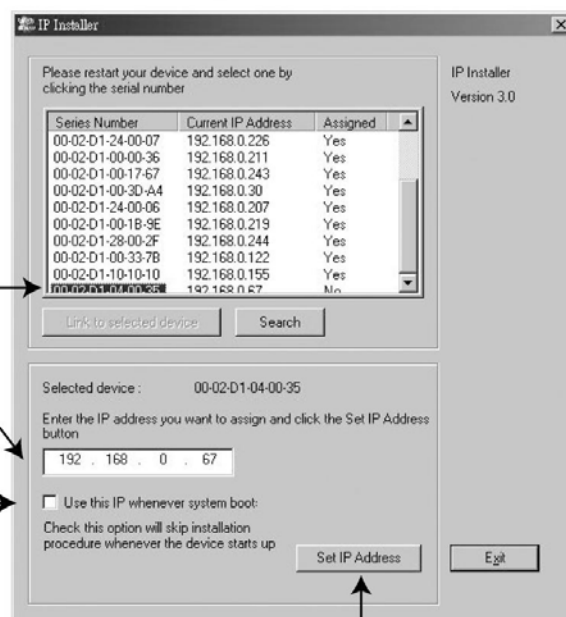
1.Run the Installer.exe first, and power on Network Camera

2.Click on serial number that matches the one you just note

3.Assign a free IP address

4.If you want to fix the IP address of the unit, check the option "Use this IP whenever system boots"

5.Click "Set IP Address" to start installation process



● Using DOS command in Windows

Start a DOS window and type the following command

Syntax :

```
arp -s <Server IP address> <Ethernet address>
ping <Server IP address>
```

Example :



The screenshot shows a Windows Command Prompt window with the following text:

```
C:\>
C:\>
C:\>
C:\>
C:\>
C:\>
C:\>
C:\>
C:\>arp -s 192.168.0.187 00-02-d1-00-00-12
C:\>ping 192.168.0.187

Pinging 192.168.0.187 with 32 bytes of data:

Request timed out.
Reply from 192.168.0.187: bytes=32 time=80ms TTL=64
Reply from 192.168.0.187: bytes=32 time=70ms TTL=64
Reply from 192.168.0.187: bytes=32 time<10ms TTL=64

Ping statistics for 192.168.0.187:
    Packets: Sent = 4, Received = 3, Lost = 1 (25% loss),
    Approximate round trip times in milli-seconds:
        Minimum = 0ms, Maximum = 80ms, Average = 37ms

C:\>
```

Three arrows point from the text below to the Command Prompt window:

- 1. Type arp command and press enter (points to the 'arp' command line)
- 2. Type ping command and press enter (points to the 'ping' command line)
- 3. If you see the reply message, the unit has been installed successfully (points to the 'Reply from' lines)

