



# VIVOTEK

## **Network Camera IP3135**

---

### **Quick Installation Guide**

This guide describes the basic functions of IP3135.

All detailed information is described in the user's manual.



## Warning Before Install

- Power off the Network Camera as soon as it is found smoking or smelt unusual.



Contact your distributor when such cases happen.

- Keep the Network Camera away from the water. If the Network Camera is wet, power off immediately.



Contact your distributor when such cases happen.

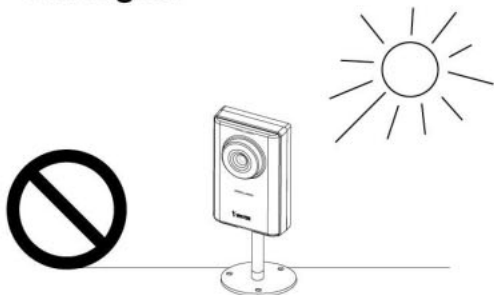
- Do not place the Network Camera around the heat sources, such as television or oven.



- Refer to your user's manual for the operating temperature.



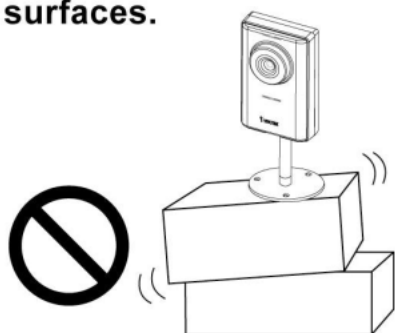
- Keep the Network Camera away from the direct sunlight.



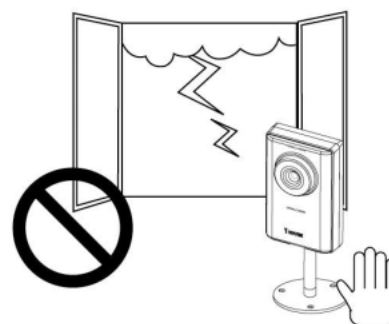
- Do not place the Network Camera in high humid environments.



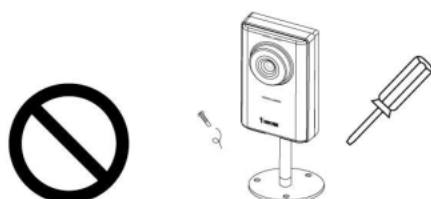
- Do not place the Network Camera on unsteady surfaces.



- Do not touch the Network Camera when it's lightening.



- Do not disassemble the Network Camera.



- Do not drop the Network Camera.



- Do not insert any object into the Network Camera, such as needles.

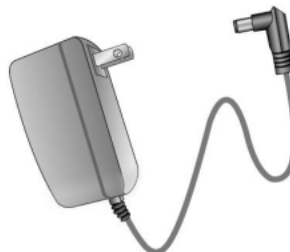


# 1 Check package contents

## ● IP3135



## ● Power adapter



## ● Camera stand



## ● Software CD



## ● Quick installation guide



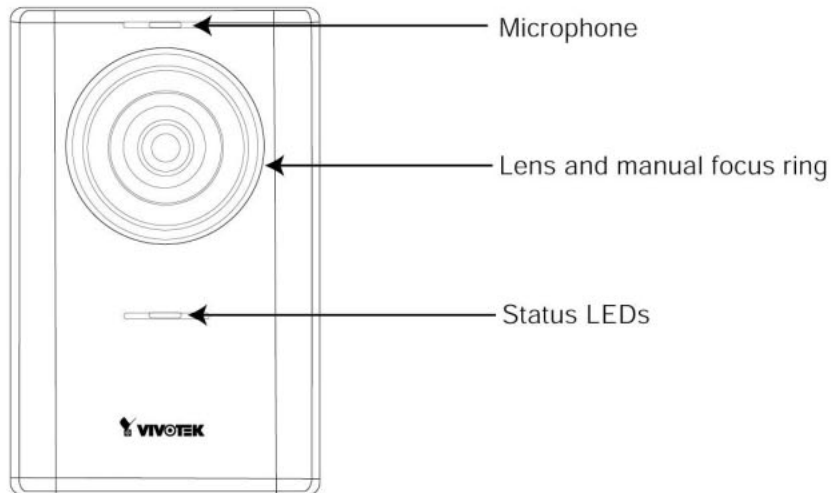
## ● Warranty card



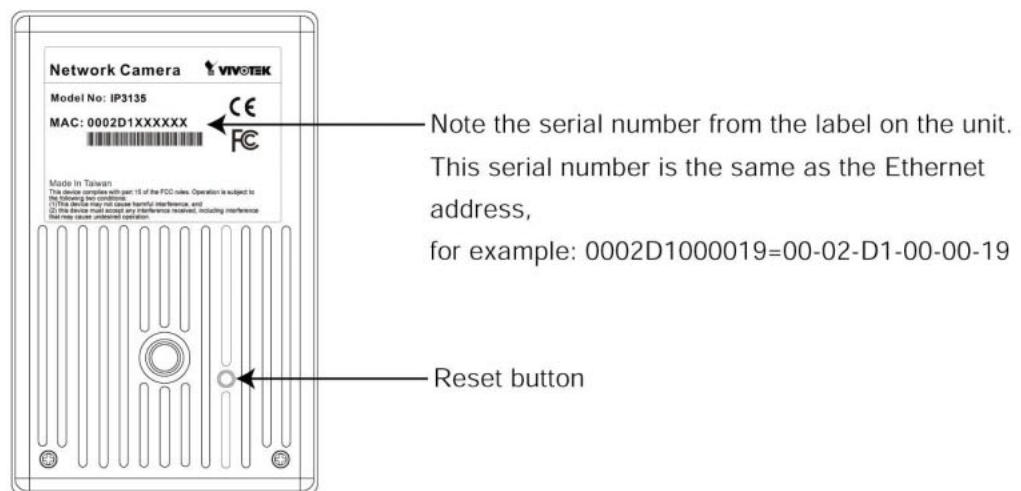
## 2

## Physical description

### ● Front panel

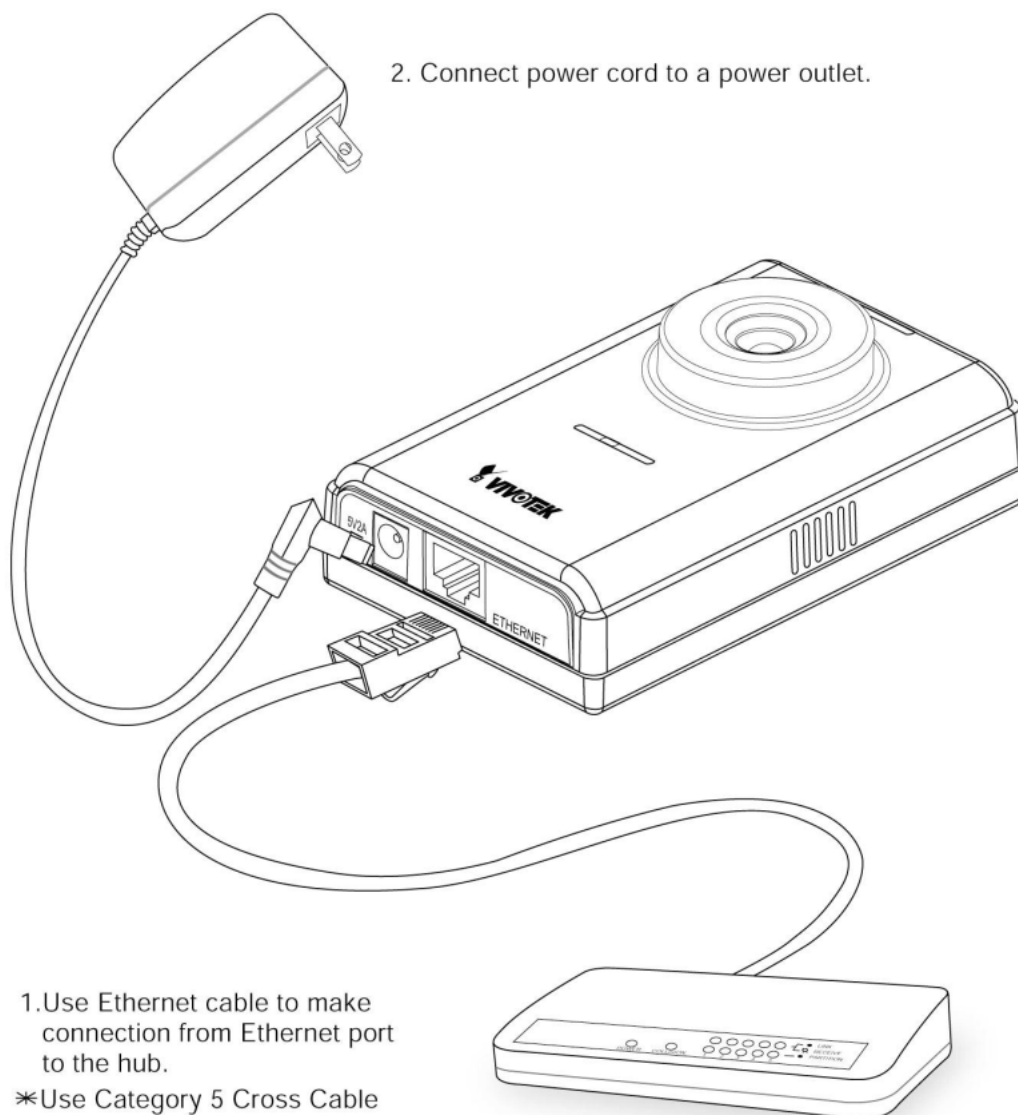


### ● Rear panel



### 3

## Install your Network Camera in Ethernet network



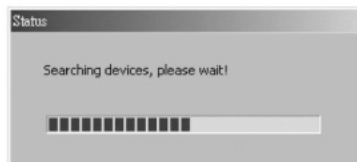
2. Connect power cord to a power outlet.

1. Use Ethernet cable to make connection from Ethernet port to the hub.

\*Use Category 5 Cross Cable when the Network Camera is directly connected to PC.

## 4 Assign IP address

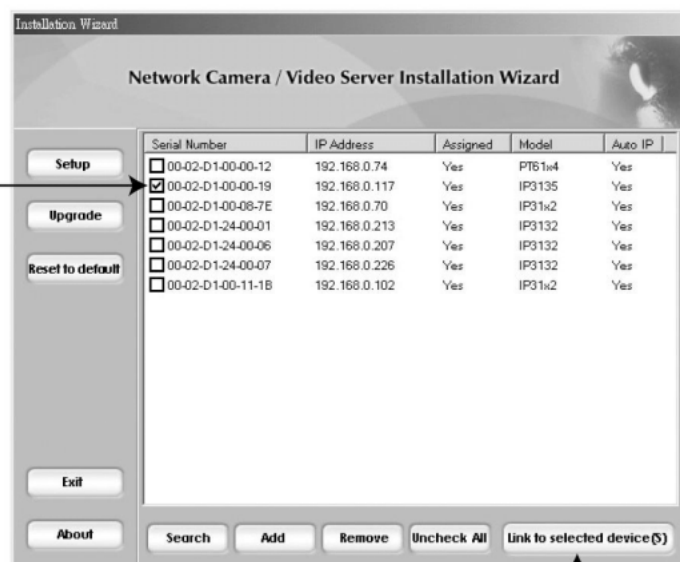
- 1.Run the "Installation Wizard" under the Software Utility directory from software CD.
- 2.The program will search the servers or cameras on the same LAN.



- 3.After searching, the main installer window will pop up. Click on serial number that matches the one you just noted from

2 Physical description

- 4.Click "Link to selected device(s)" to connect the Internet Explorer to the Network Camera.





For setup further configuration, please check user's manual on the software CD.