



VIVOTEK

Network Camera IP3136

Quick Installation Guide

This guide describes the basic functions of IP3136.

All detailed information is described in the user's manual.



Warning Before Install

- Power off the Network Camera as soon as it is found smoking or smelt unusual.



Contact your distributor when such cases happen.

- Keep the Network Camera away from the water. If the Network Camera is wet, power off immediately.

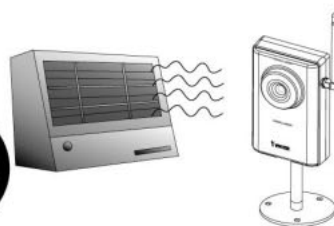


Contact your distributor when such cases happen.

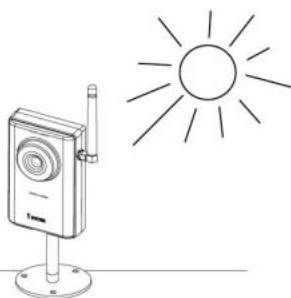
- Do not place the Network Camera around the heat sources, such as television or oven.



- Refer to your user's manual for the operating temperature.



- Keep the Network Camera away from the direct sunlight.



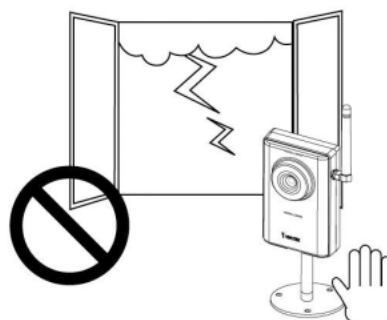
- Do not place the Network Camera in high humid environments.



- Do not place the Network Camera on unsteady surfaces.



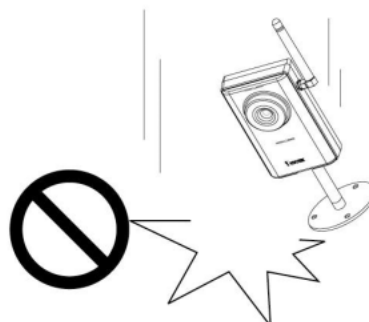
- Do not touch the Network Camera when it's lightening.



- Do not disassemble the Network Camera.



- Do not drop the Network Camera.



- Do not insert any object into the Network Camera, such as needles.



1 Check package contents

● IP3136



● Camera stand



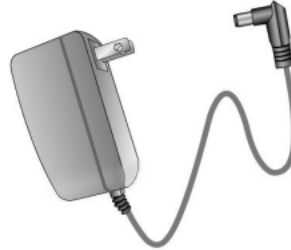
● Software CD



● Warranty card



● Power adapter



● Antenna



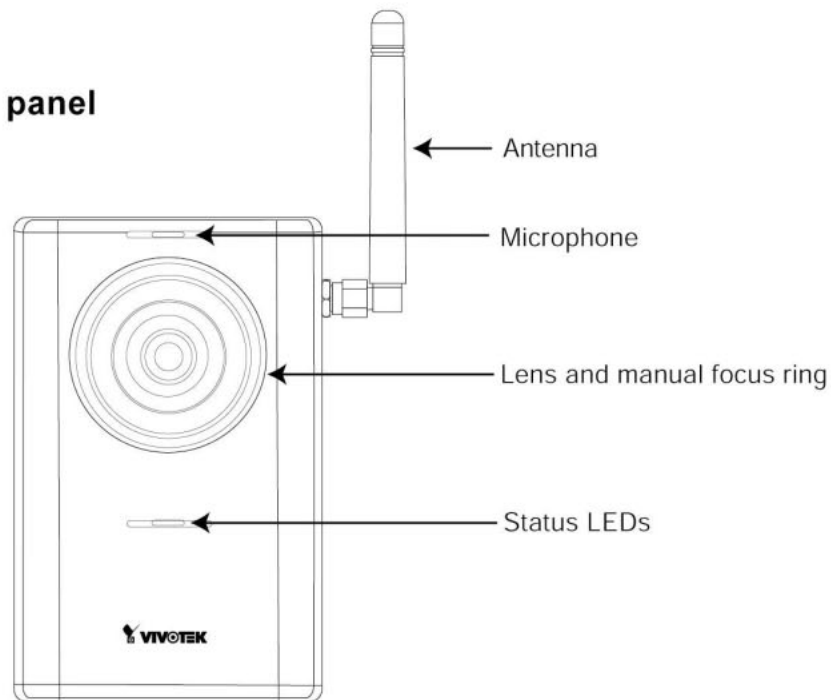
● Quick installation guide



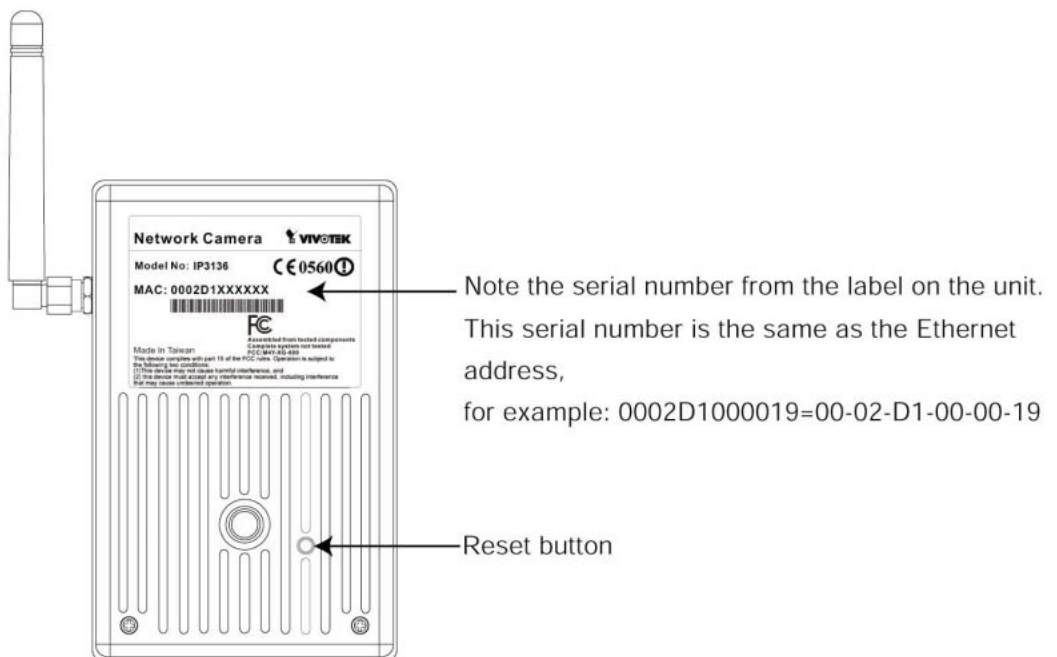
2

Physical description

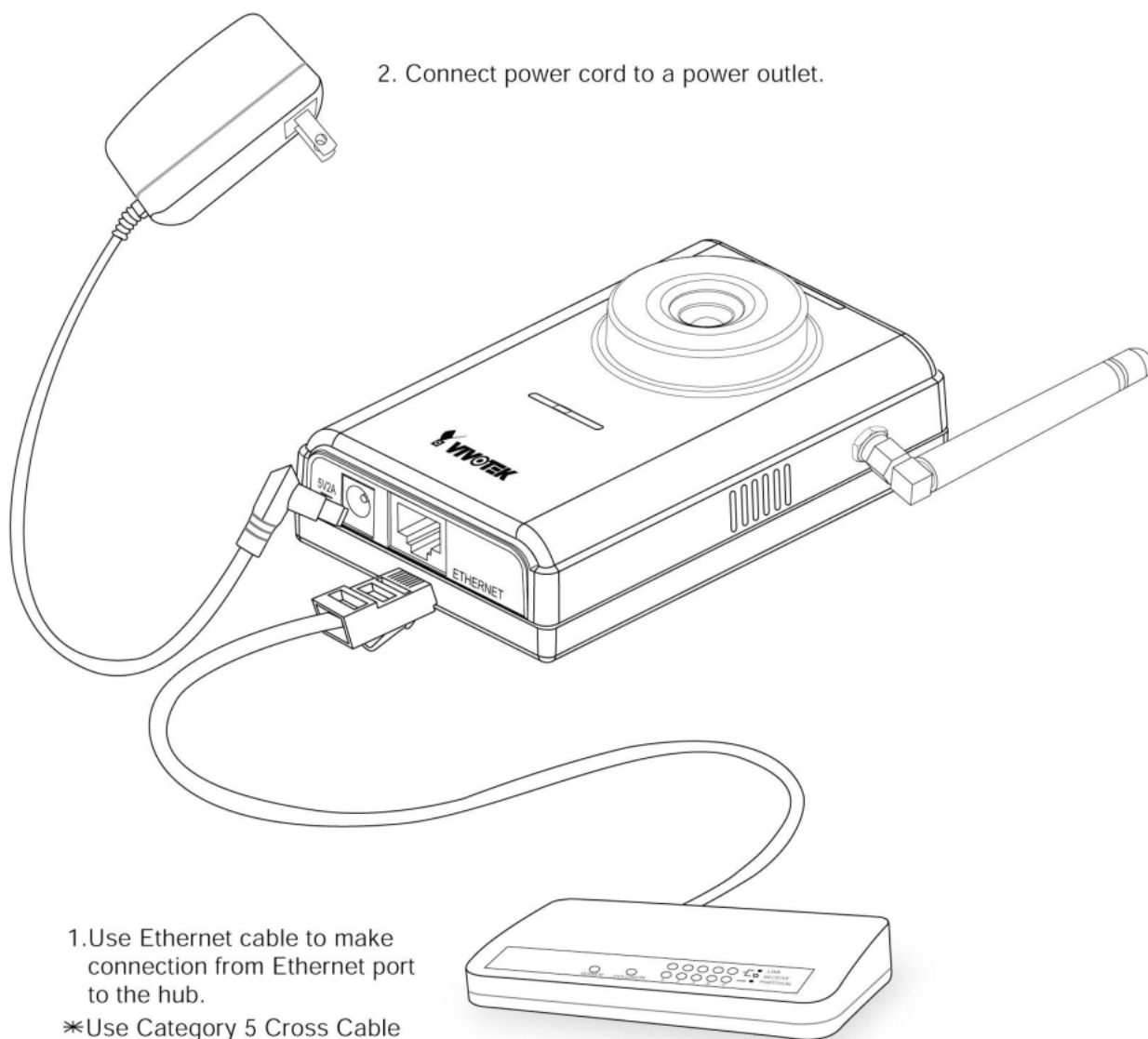
● Front panel



● Rear panel



3 Install your Network Camera in Ethernet network

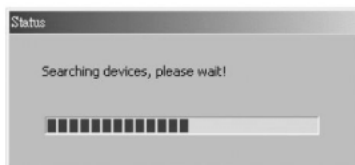


1. Use Ethernet cable to make connection from Ethernet port to the hub.

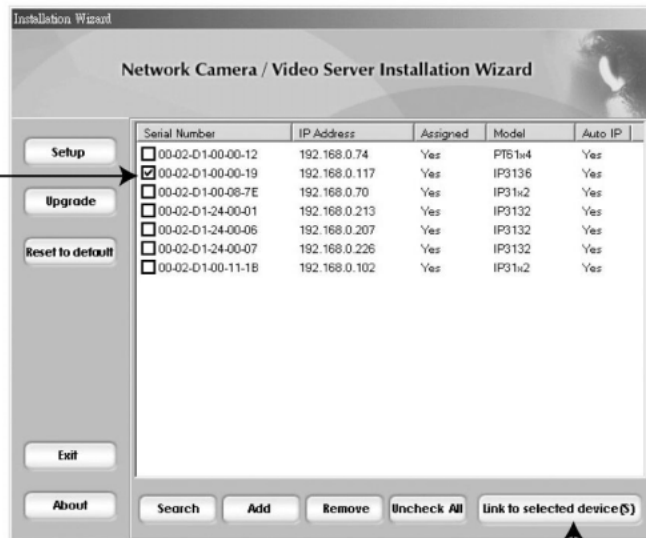
*Use Category 5 Cross Cable when the Network Camera is directly connected to PC.

4 Assign IP address

- 1.Run the "Installation Wizard" under the Software Utility directory from software CD.
- 2.The program will search the servers or cameras on the same LAN.

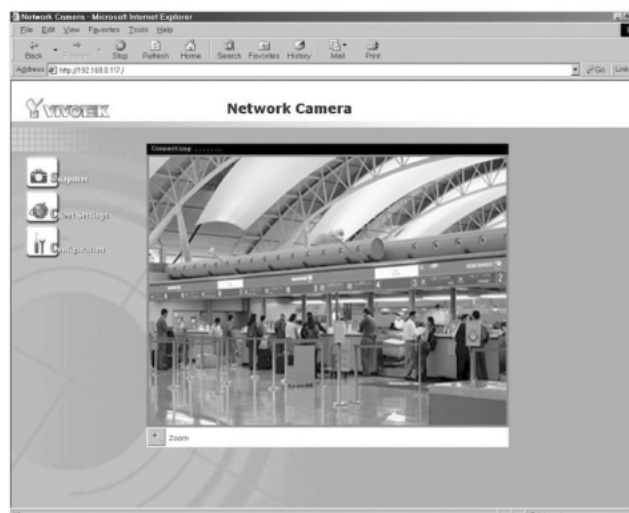


- 3.After searching, the main installer window will pop up. Click on serial number that matches the one you just noted from **2 Physical description**



- 4.Click "Link to selected device(s)" to connect the Internet Explorer to the Network Camera.

5 The Internet Explorer Connects to the Network Camera



6

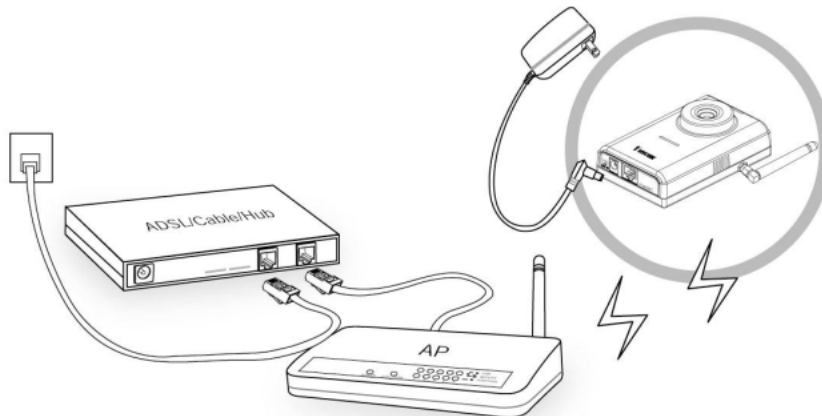
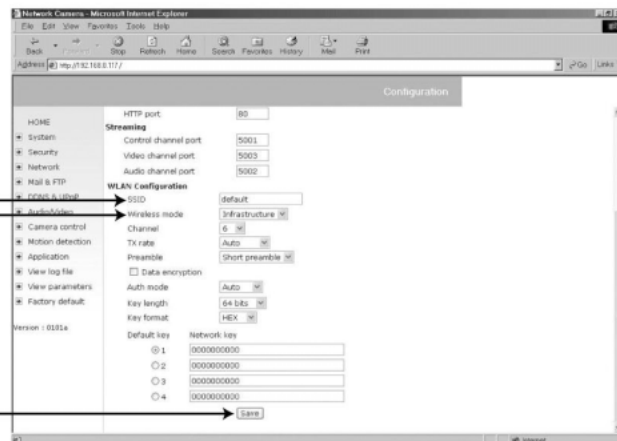
Set up your wireless configuration for the Network Camera

1. Check the SSID currently set on your wireless access point (AP).
2. Go to IP3136's **Configuration > Network > WLAN Configuration**

3. Type in the SSID consistent with the setting on your AP.

4. Select the Wireless mode as "Infrastructure".

5. Click **Save**



Note:

1. SSID abbreviated from Service Set Identifier is the name assigned to the wireless network. The IP3136's factory SSID setting is set to "default".
2. Select "Ad-Hoc" wireless mode if you want the IP3136 to communicate without using an AP or wireless router.

For setup further configuration, please check user's manual on the software CD.