



## **Network Camera IP3111、IP3121**

---

### **Quick Installation Guide**

This guide describes the basic functions of  
IP3111、IP3121.

All detailed information is described in the  
user's manual.

# 1

## Check package contents

### ● IP3111、IP3121



### ● Camera stand



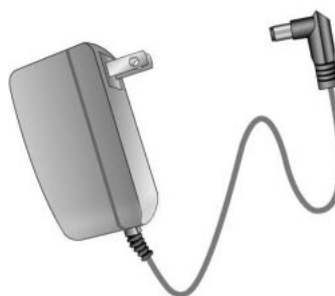
### ● Software CD



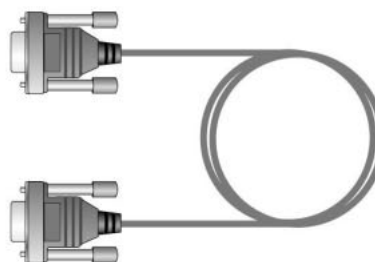
### ● Quick installation guide



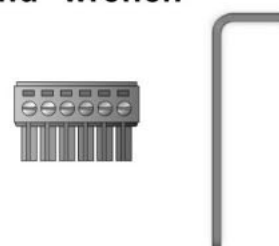
### ● Power adapter



### ● Null modem cable



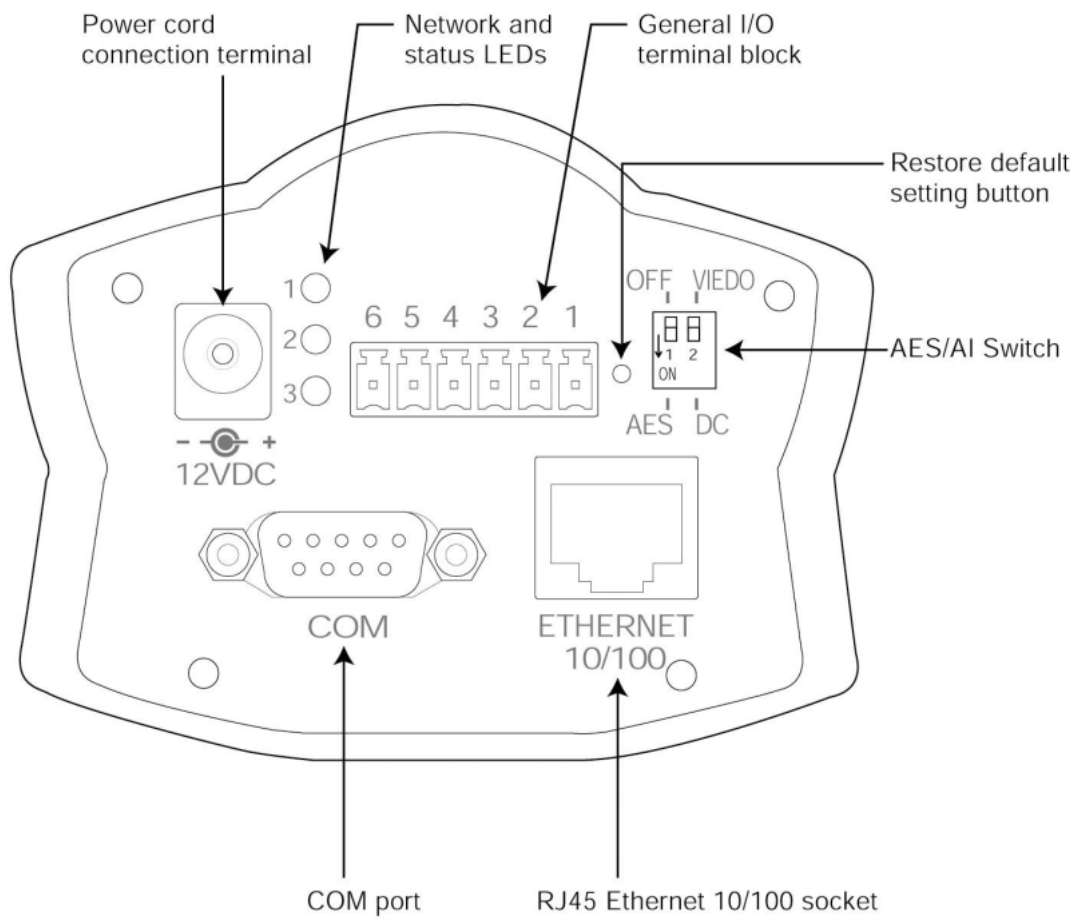
### ● I/O connector (attached) and wrench



### ● Warranty card



## 2 Physical description



**3**  
**Make connections**

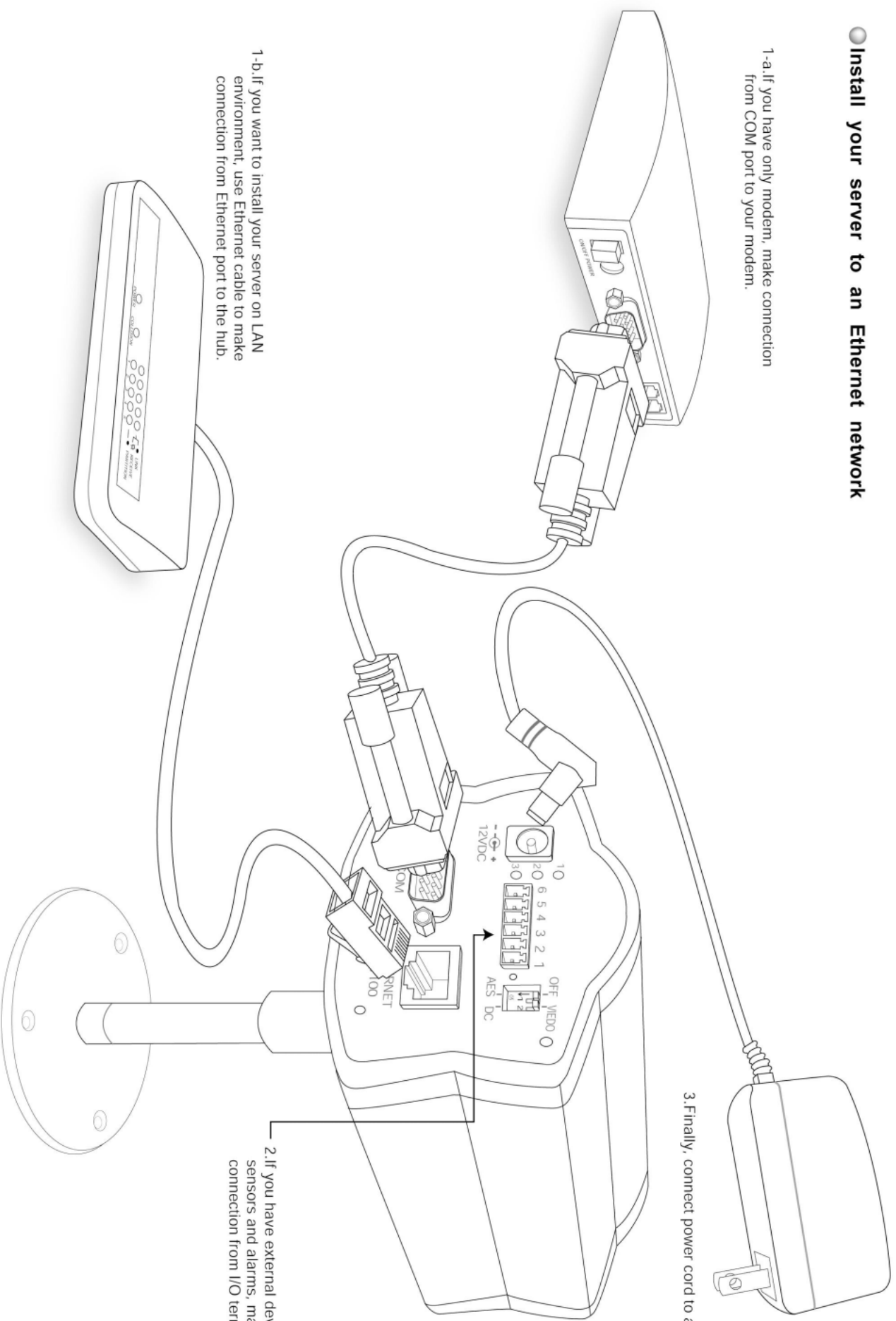
- **Install your server to an Ethernet network**

1-a.If you have only modem, make connection from COM port to your modem.

3. Finally, connect power cord to a power outlet

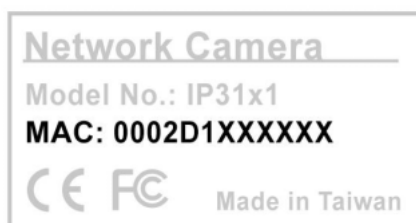
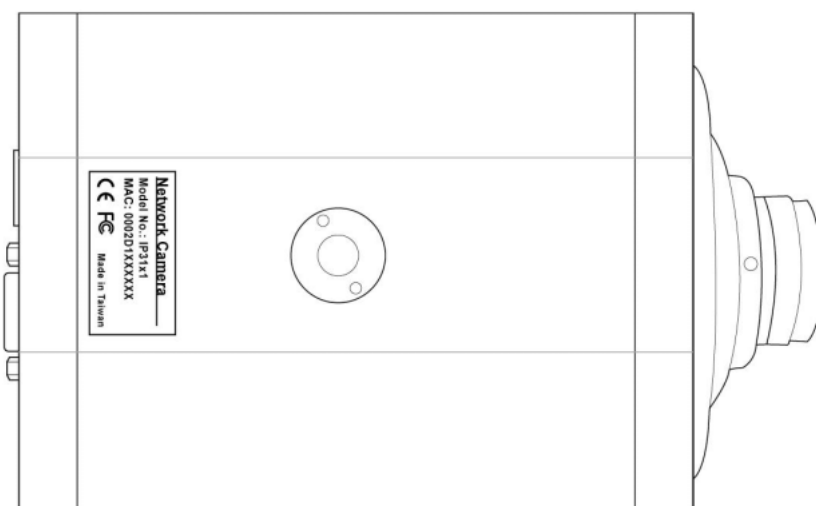
1-b.If you want to install your server on LAN environment, use Ethernet cable to make connection from Ethernet port to the hub.

- 2. If you have external devices such as sensors and alarms, make connection from I/O terminal block



## 4 Assign IP address

- A Note the serial number from the label on the unit.



This serial number is the same as Ethernet address,  
for example: 0002D1000012=00-02-D1-00-00-12

## B Assign IP address

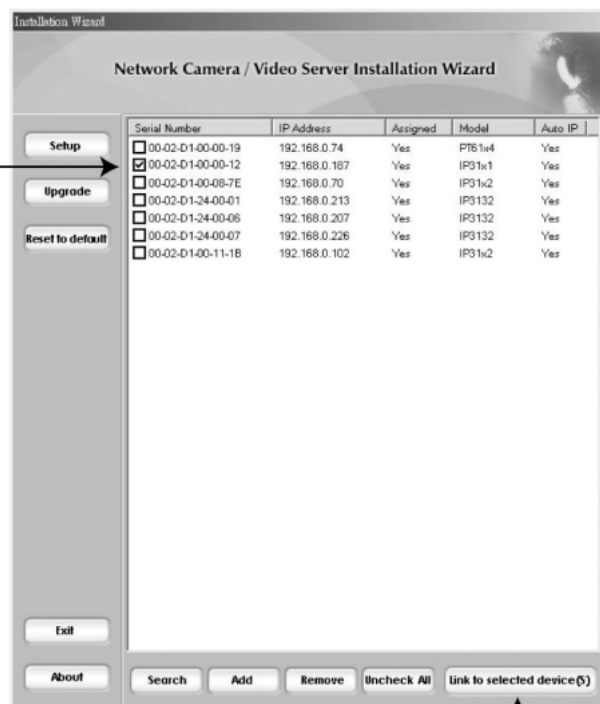
### ● Using Installer program

1.Run the "Installation Wizard" under the Software Utility directory from software CD.

2.The program will search the servers or cameras on the same LAN.



3.After searching, the main installer window will pop up. Click on serial number that matches the one you just noted from **4 Assign IP Address**

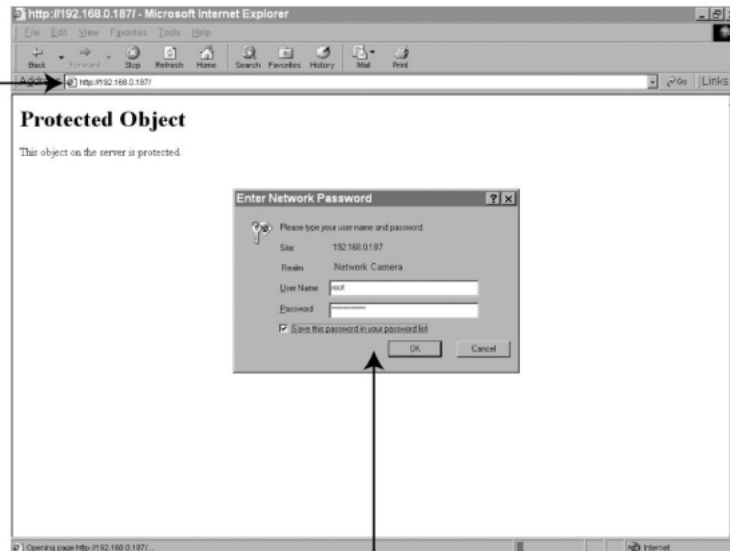


4.Click "Link to selected device(s)" to connect the Internet Explorer to the Network Camera.

# 5

## Start the Internet Explorer for verify your installation

1.Type the IP address and press enter



2.Type "root" as user name and the serial number as password, then press enter or click ok



3.Click the configuration for further installation

For detailed information on further configuration, see user's manual on the CD.