



VIVOTEK

Network Camera

IP3112 、 IP3122 、 IP3132

Quick Installation Guide

This guide describes the basic functions of
IP3112 、 IP3122 、 IP3132.

All detailed information is described in the
user's manual.

1 Check package contents

● IP3112、IP3122、IP3132



● Camera stand



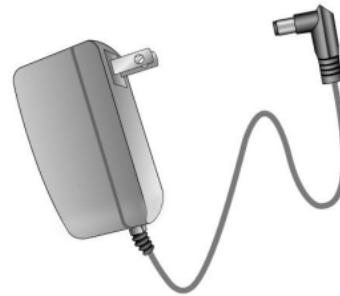
● Software CD



● Warranty card



● Power adapter



● I/O connector (attached)

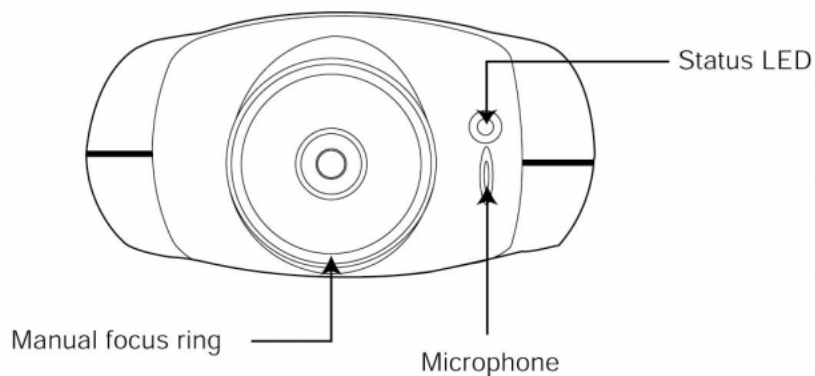


● Quick installation guide

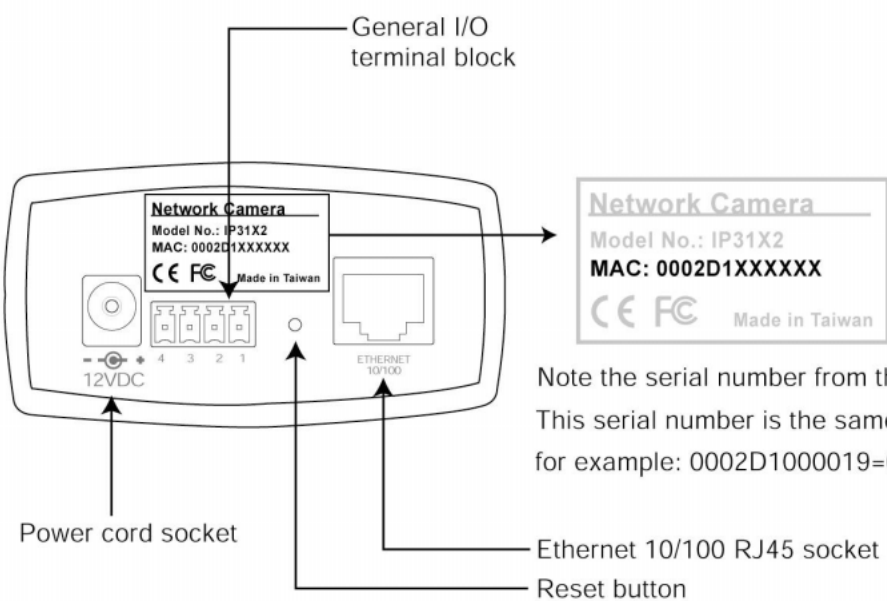


2 Physical description

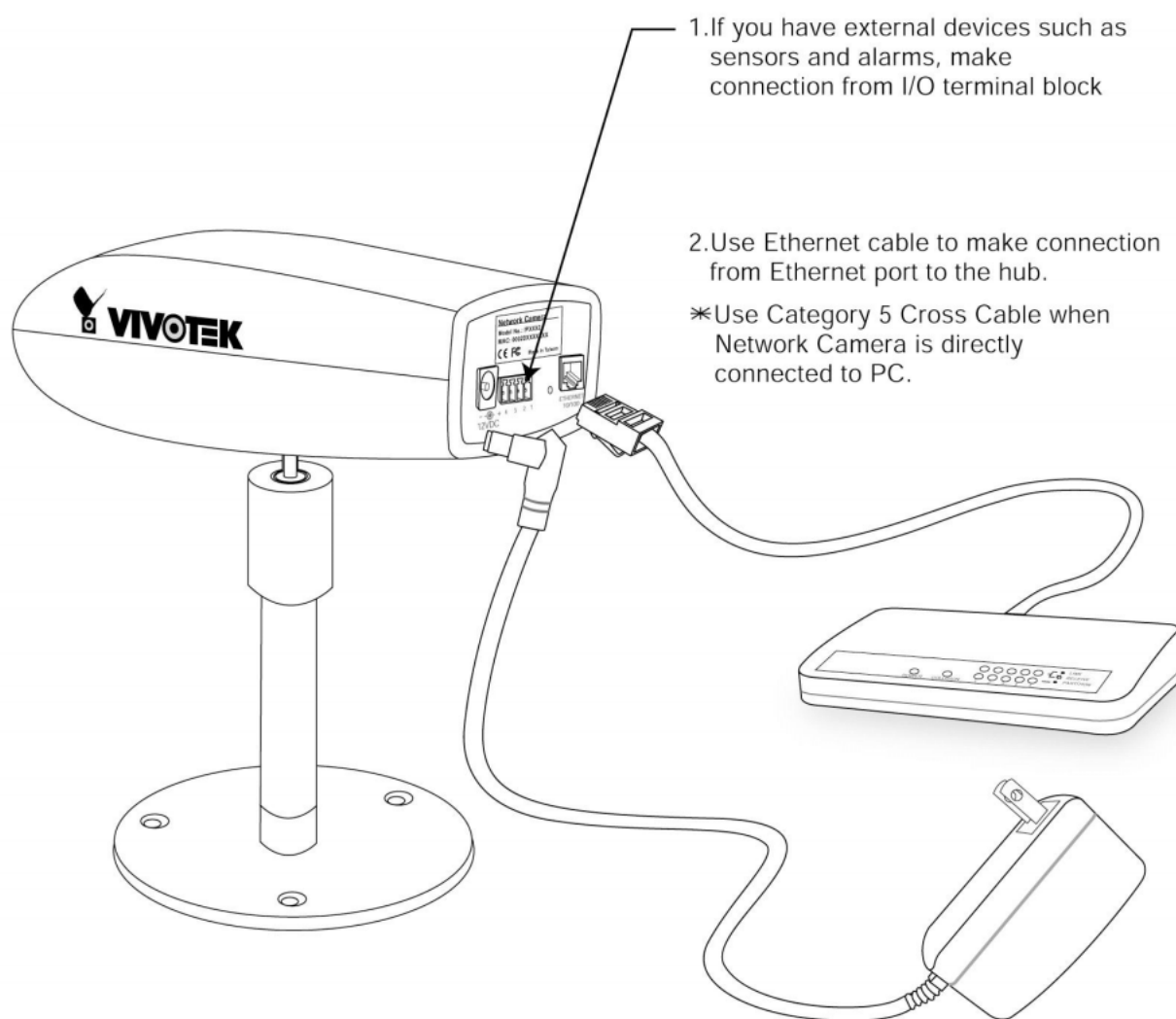
● Front panel



● Back panel



3 Make connections



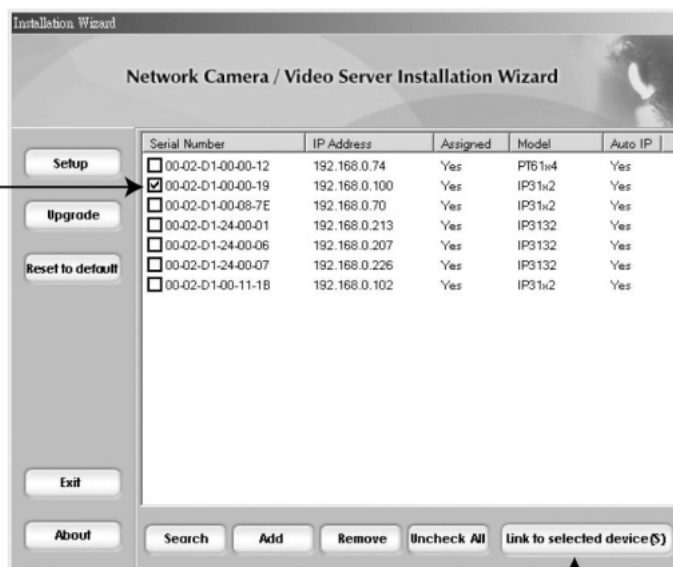
4 Assign IP address

- 1.Run the "Installation Wizard" under the Software Utility directory from software CD.
- 2.The program will search the servers or cameras on the same LAN.



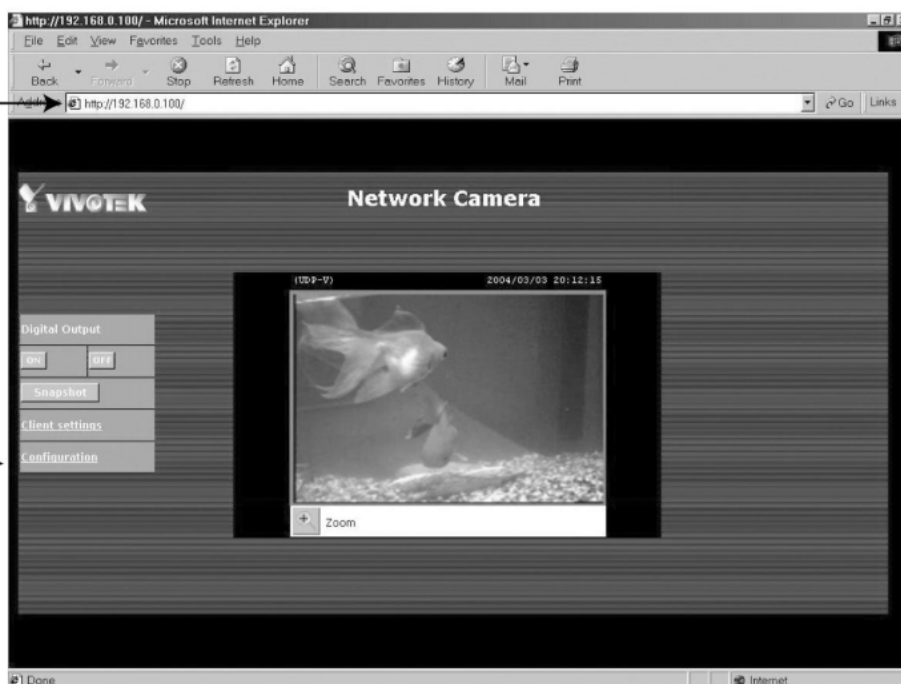
- 3.After searching, the main installer window will pop up. Click on serial number that matches the one you just noted from **2 Physical description**

- 4.Click "Link to selected device(s)" to connect the Internet Explorer to the Network Camera.



5 Open Internet Explorer to verify your installation

1.Type the IP address and press enter



2.Congratulations! You have been able to connect Network Camera. It is highly recommended to click "Configuration" for further settings

For detailed of further configuration, see user's manual in the CD-Rom.