



# VIVOTEK

## **Network Camera IP6112 / IP6122**

---

### **Quick Installation Guide**

This guide describes the basic functions of IP6112 / IP6122.

All detailed information is described in the user's manual.

6F., No. 192, Lien-Cheng Rd., Chung-Ho, Taipei County, Taiwan

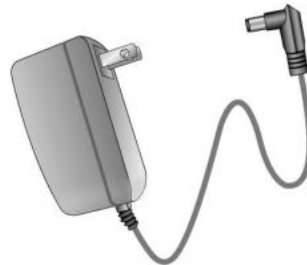
Tel: +886-2-8245-5282 Fax: +886-2-8245-5532 E-mail: [sales@vivotek.com](mailto:sales@vivotek.com) <http://www.vivotek.com>

# 1 Check package contents

● IP6112/IP6122



● Power adapter



● Camera stand



● Software CD



● Wrench



● Quick installation guide

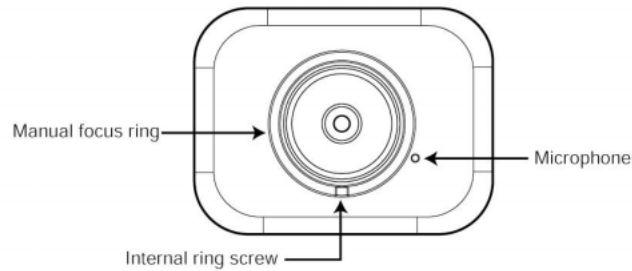


● Warranty card

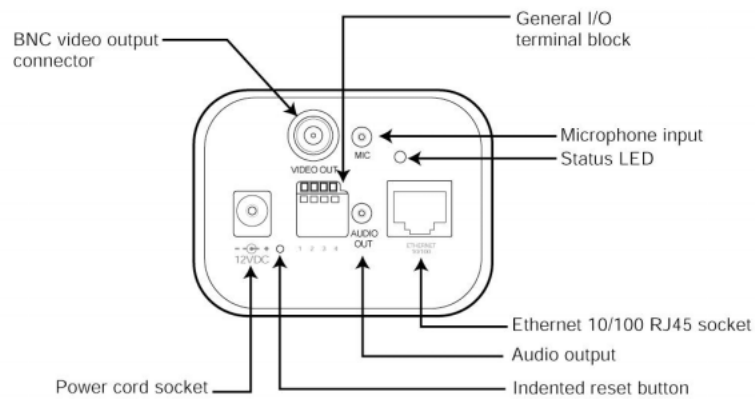


## 2 Physical description

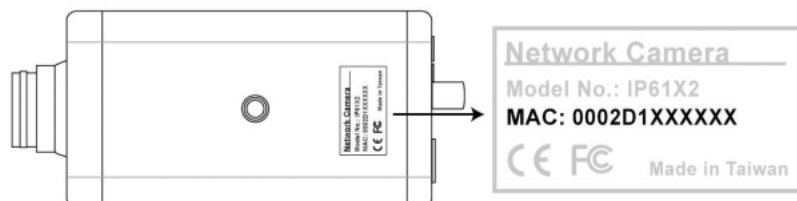
### ● Front panel



### ● Back panel

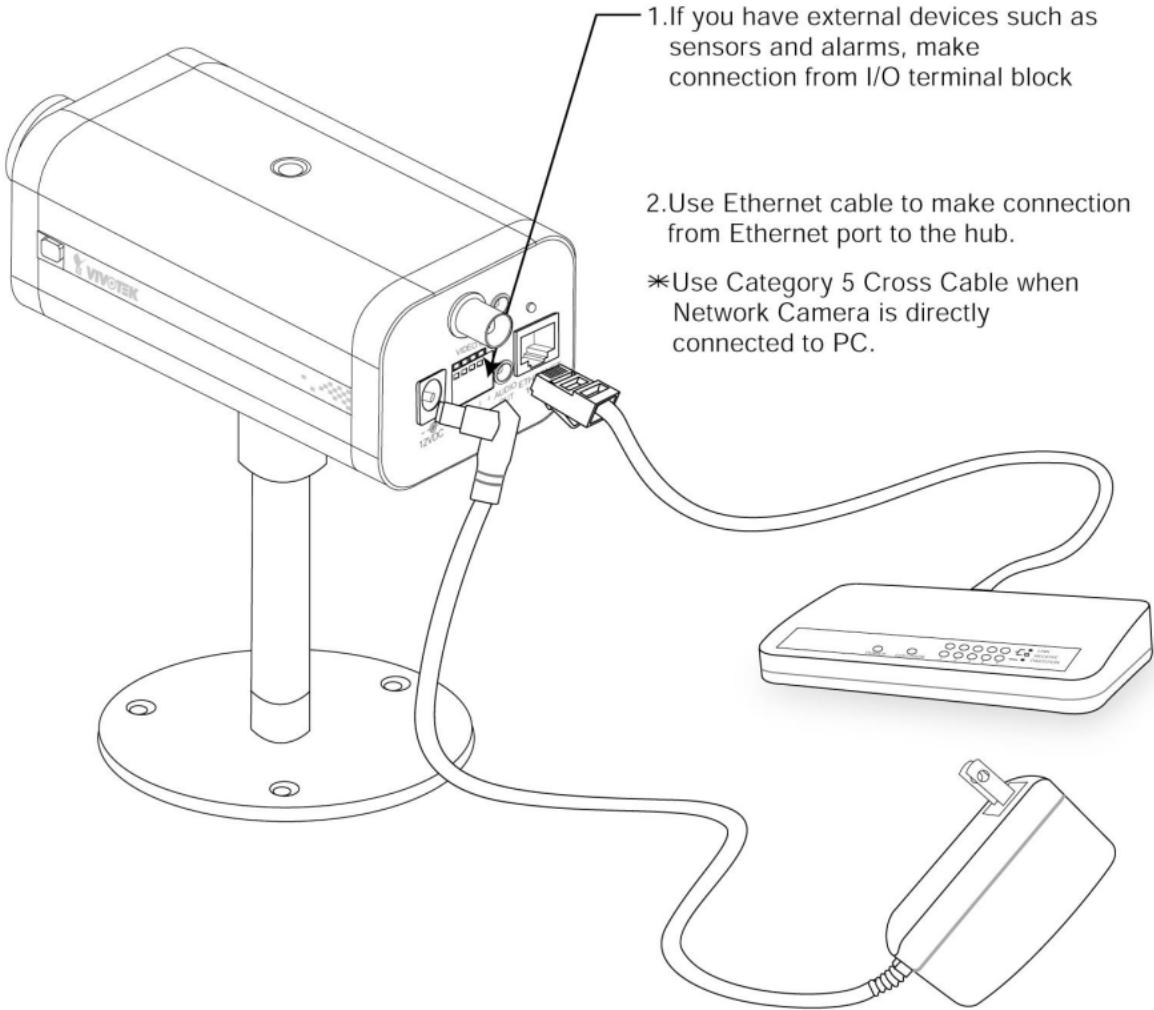


### ● Bottom panel



This serial number is the same as Ethernet address,  
for example: 0002D1140000=00-02-D1-14-00-00

### 3 Make connections



1.If you have external devices such as sensors and alarms, make connection from I/O terminal block

2.Use Ethernet cable to make connection from Ethernet port to the hub.

\*Use Category 5 Cross Cable when Network Camera is directly connected to PC.

3.Finally, connect power cord to a power outlet

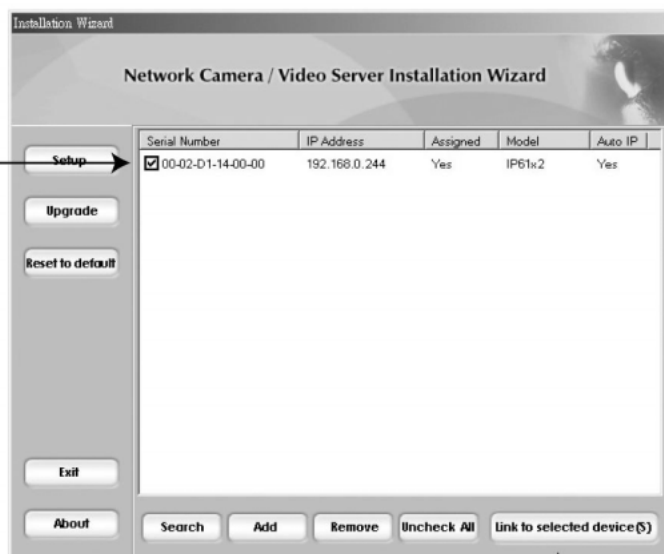
## 4 Assign IP address

1.Run the "Installation Wizard" under the Software Utility directory from software CD.

2.The program will search the servers or cameras on the same LAN.



3.After searching, the main installer window will pop up. Click on serial number that matches the one you just noted from **2** Physical description

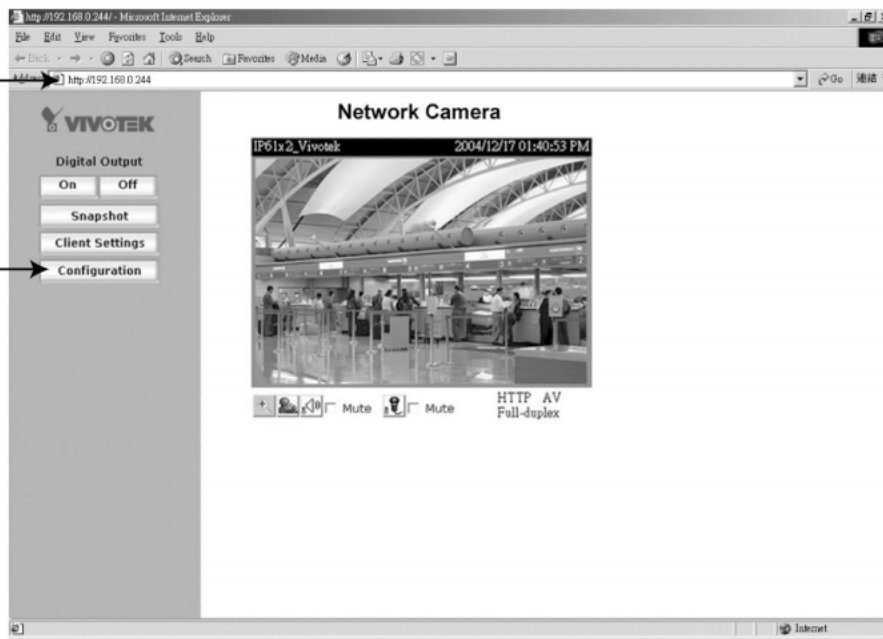


4.Click "Link to selected device(s)" to connect the Internet Explorer to the Network Camera.

## 5

### Open Internet Explorer to verify your installation

1. Type the IP address and press enter



2. Congratulations! You have been able to connect Network Camera. It is highly recommended to click "Configuration" for further settings

For detailed of further configuration, see user's manual in the CD-Rom.