



VIVOTEK

Network Camera IP6114 / IP6124

Quick Installation Guide

This guide describes the basic functions of IP6114 / IP6124.

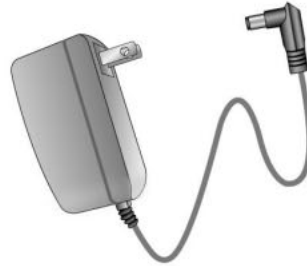
All detailed information is described in the user's manual.

1 Check package contents

● IP6114/IP6124



● Power adapter



● Camera stand



● Antennas



● Software CD



● Wrench



● Quick installation guide

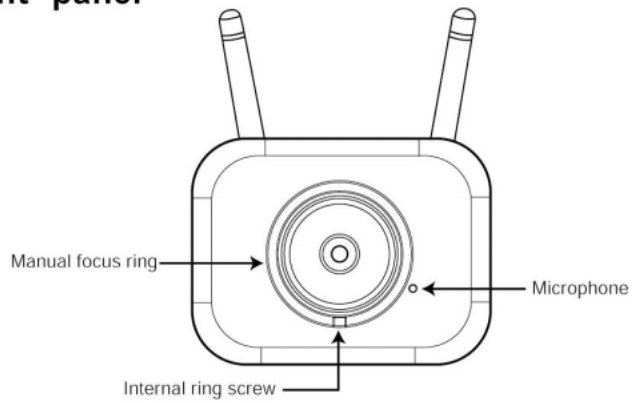


● Warranty card

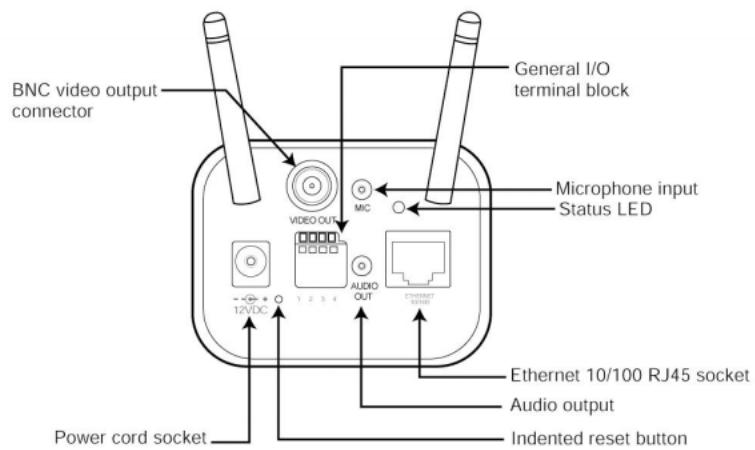


2 Physical description

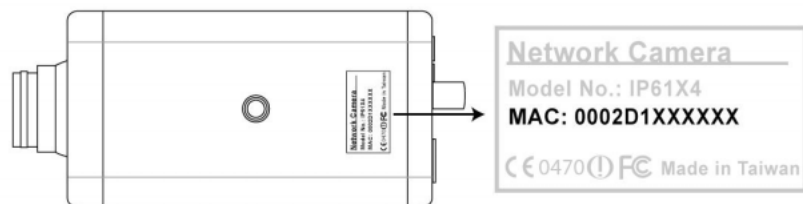
● Front panel



● Back panel

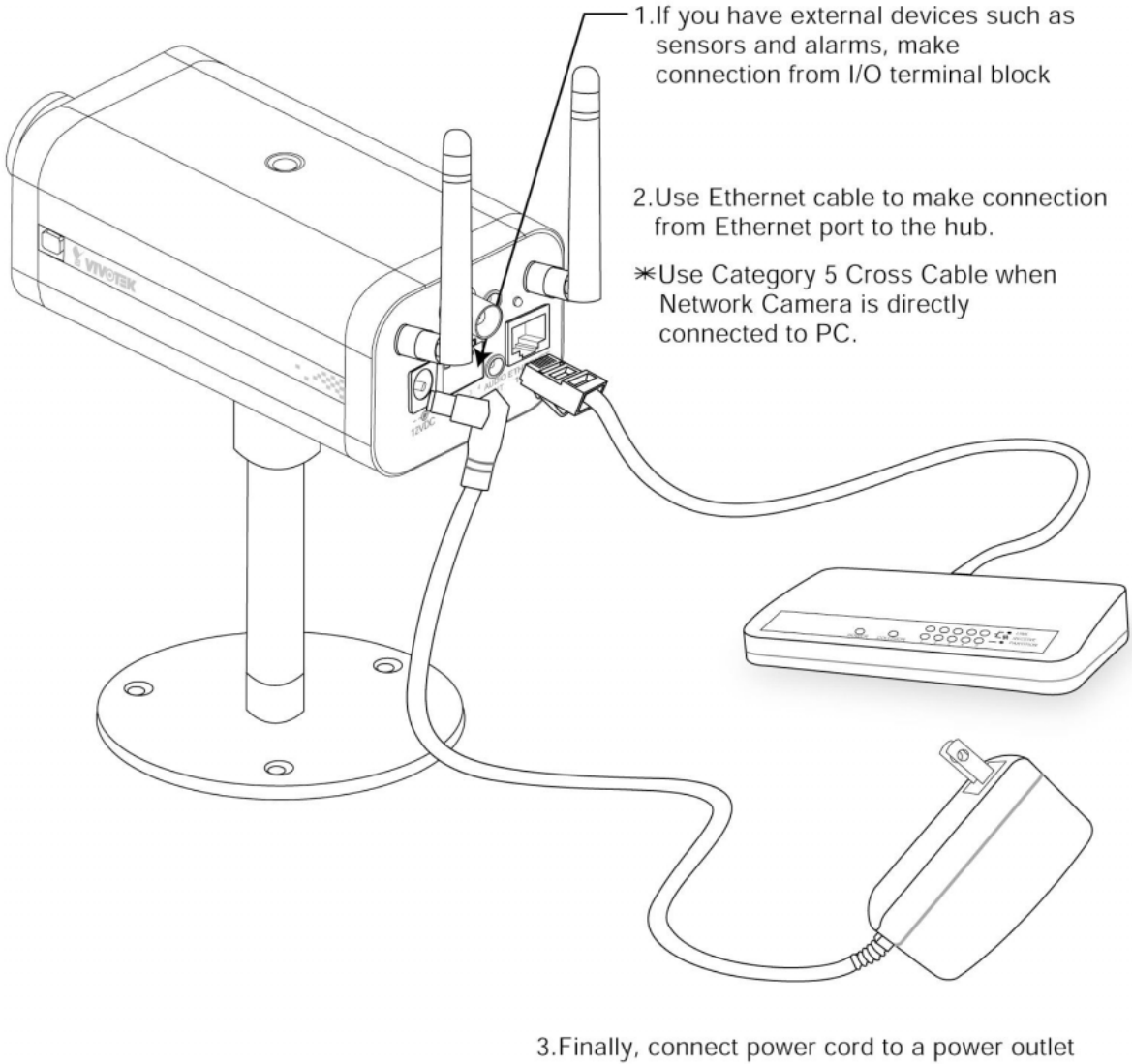


● Bottom panel



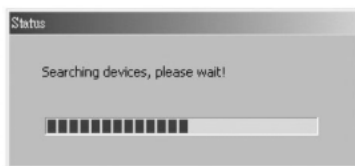
This serial number is the same as Ethernet address,
for example: 0002D1140000=00-02-D1-14-00-00

3 Make connections

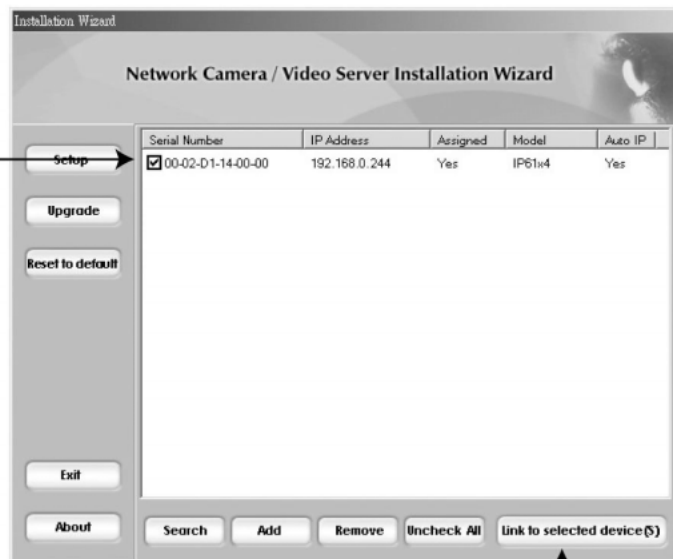


4 Assign IP address

- 1.Run the "Installation Wizard" under the Software Utility directory from software CD.
- 2.The program will search the servers or cameras on the same LAN.



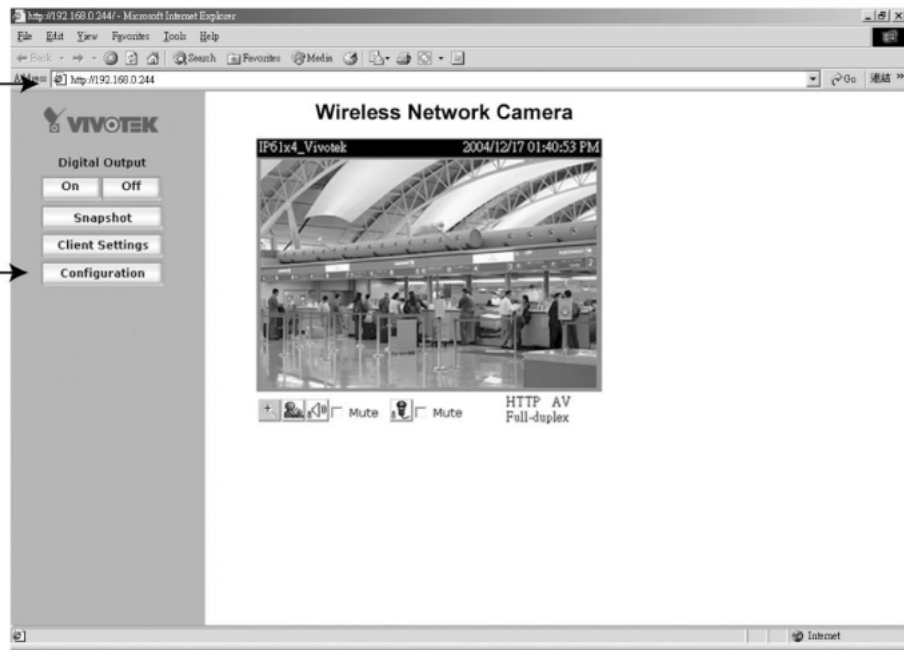
- 3.After searching, the main installer window will pop up. Click on serial number that matches the one you just noted from **2 Physical description**



- 4.Click "Link to selected device(s)" to connect the Internet Explorer to the Network Camera.

5 Open Internet Explorer to verify your installation

1.Type the IP address and press enter



2.Congratulations! You have been able to connect Network Camera. It is highly recommended to click "Configuration" for further settings

For detailed of further configuration, see user's manual in the CD-Rom.