

# Progressive Scan CCD NETWORK CAMERA Quick Installation Guide

English | 繁體中文 | 簡體中文 | 日本語 | Français | Español | Deutsch | Português | Italiano | Türkçe | Polski | Русский | Česky | Svenska | العربية



## IP7153/IP7154

This guide describes the basic functions of IP7153/IP7154.  
All detailed information is described in the user's manual.



## Warning Before Installation

- **Power off the Network Camera as soon as smoke or unusual odors are detected.**
- **Keep the Network Camera away from water. If the Network Camera becomes wet, power off immediately.**

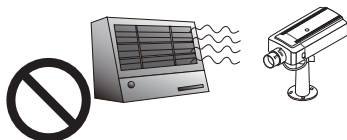
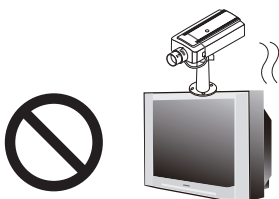


Contact your distributor in the event of occurrence.

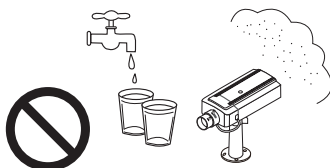
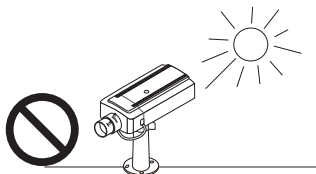


Contact your distributor in the event of occurrence.

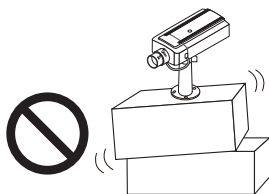
- **Do not place the Network Camera around heat sources, such as a television or oven.**
- **Refer to your user's manual for the operating temperature.**



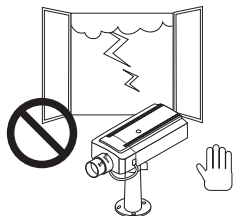
- **Keep the Network Camera away from direct sunlight.**
- **Do not place the Network Camera in high humidity environments.**



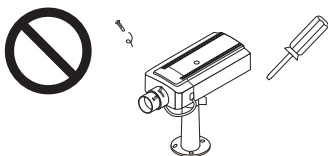
- Do not place the Network Camera on unsteady surfaces.



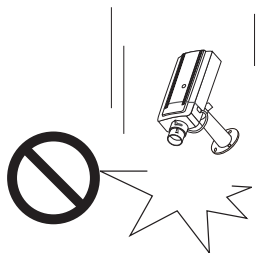
- Do not touch the Network Camera during a lightning storm.



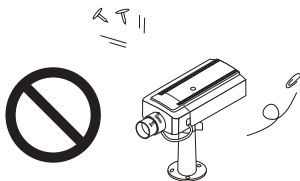
- Do not disassemble the Network Camera.



- Do not drop the Network Camera.



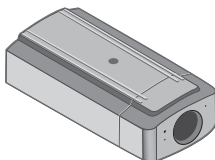
- Do not insert sharp or tiny objects into the Network Camera.



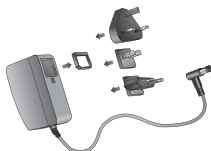
## 1

## Check Package Contents

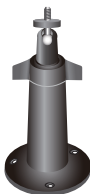
## ● IP7153 / IP7154



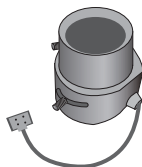
## ● Power Adapter



## ● Camera Stand



## ● Lens



## ● Quick Installation Guide



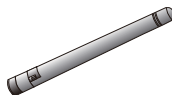
## ● Software CD



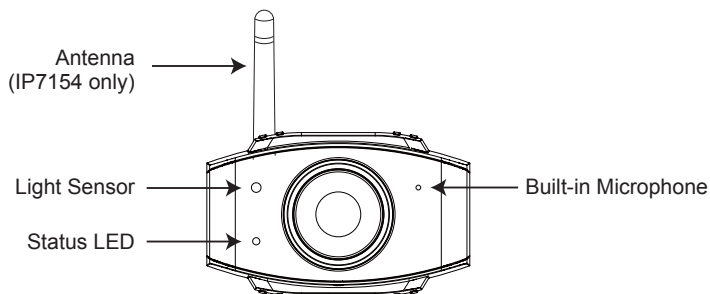
## ● Warranty Card



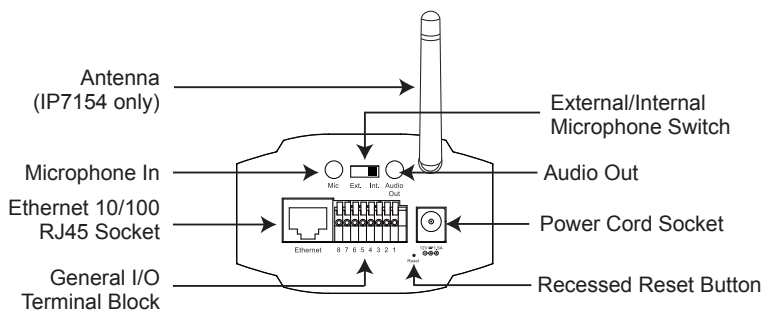
## ● Antenna (IP7154 only)



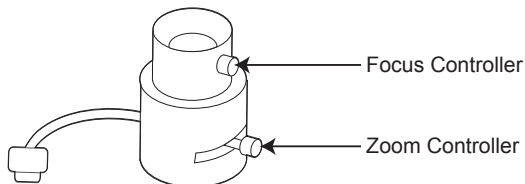
## ● Front Panel



## ● Back Panel



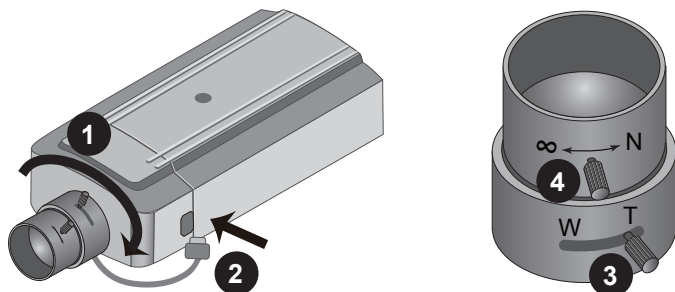
## ● Lens



## 3

**Mounting the Lens to the Camera**

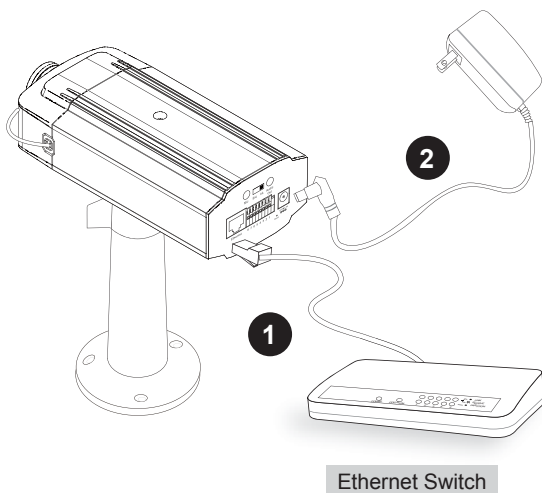
1. Mount the lens by turning it clockwise onto the camera mount until it stops. If necessary, turn the lens counterclockwise slowly to achieve the best optimum spacing.
2. Connect the lens cable plug to the camera connector.
3. Unscrew the zoom controller to adjust the zoom factor. Upon completion, tighten the zoom controller.
4. Unscrew the focus controller to adjust the focus range. Upon completion, tighten the focus controller.



For further setup, please refer to the lens' instruction manual inside the lens package.

**General Connection (without PoE)**

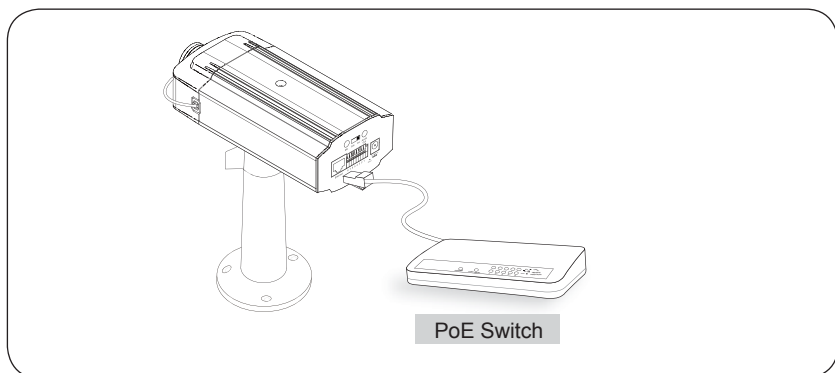
1. Connect the camera to a switch via Ethernet cable.
2. Connect the power cable from the Network Camera to a power outlet.



## **Power over Ethernet (PoE) (IP7153 only)**

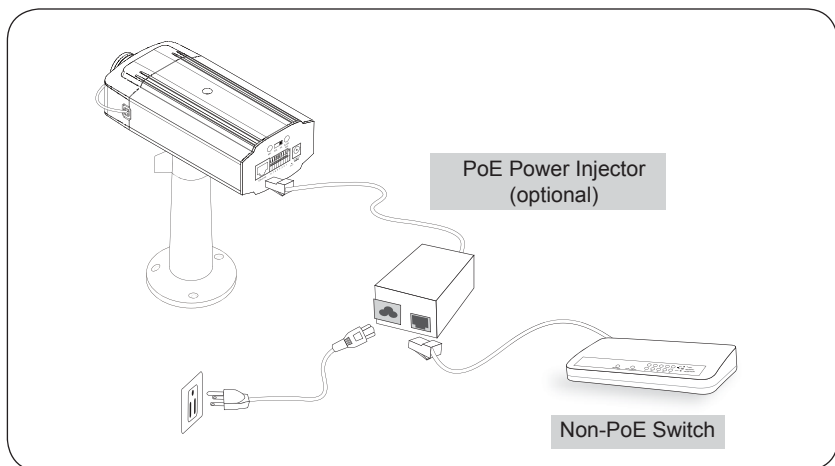
### ● **When using a PoE-enabled switch**

This Network Camera is PoE-compliant, allowing transmission of power and data via a single Ethernet cable. Follow the below illustration to connect the Network Camera to a PoE-enabled switch via Ethernet cable.



### ● **When using a non-PoE switch**

Use a PoE power injector (optional) to connect between the Network Camera and a non-PoE switch.

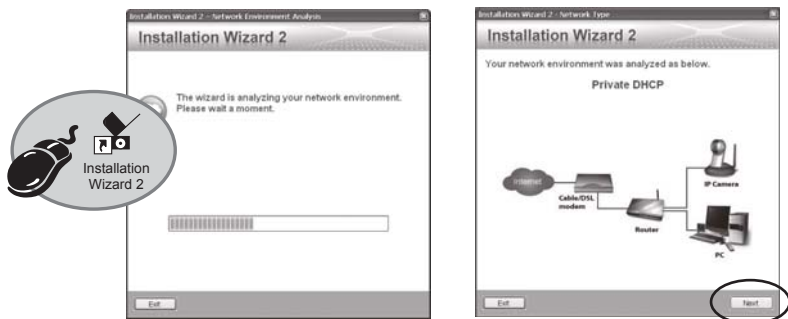




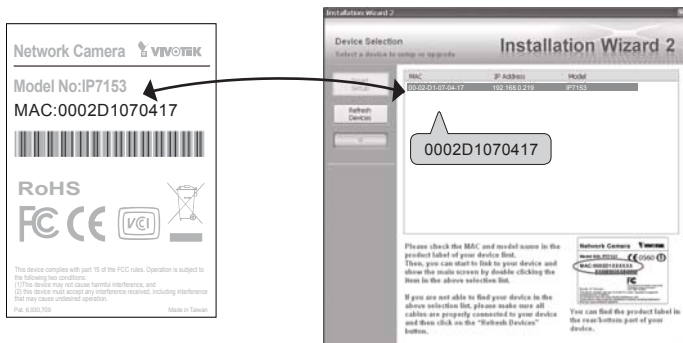
## 5

## Assigning an IP Address

1. Install "Installation Wizard 2" from the Software Utility directory on the software CD.
2. The program will conduct an analysis of your network environment. After your network is analyzed, please click on the "Next" button to continue the program.



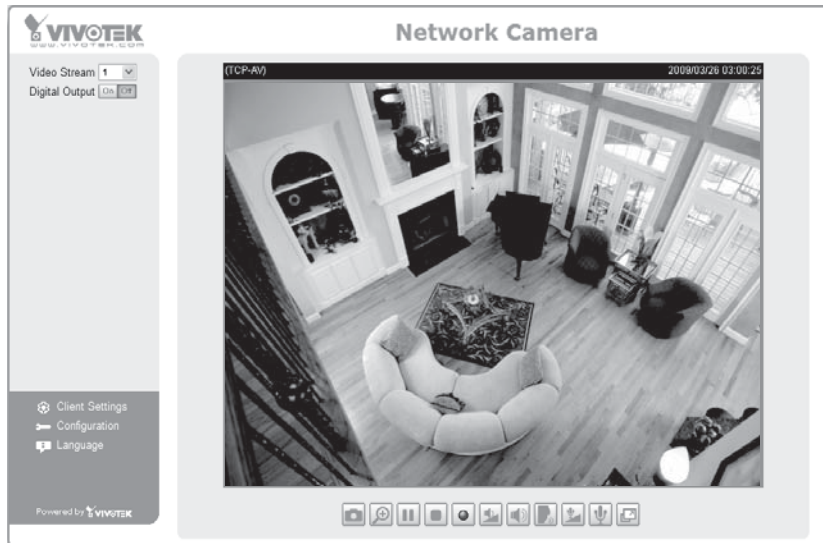
3. The program will search for VIVOTEK Video Receivers, Video Servers, and Network Cameras on the same LAN.
4. After searching, the main installer window will pop up. Click on the MAC that matches the one labeled on the bottom of your device to connect to the Network Camera via Internet Explorer.



## 6

## Ready to Use

1. Access the Network Camera on the LAN.
2. Retrieve live video through the web browser or recording software.



For further setup, please refer to user's manual on the software CD.

1. Check the SSID for your wireless access point (AP).
2. Go to the IP7154 Configuration page > Advanced mode > Wireless LAN.

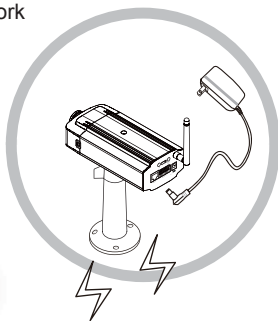
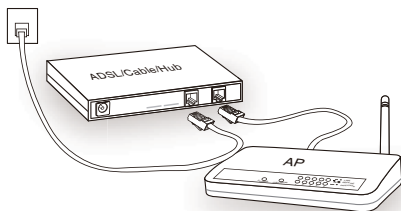
3. Type in the SSID the same as your AP.

4. Select the Wireless mode as "Infrastructure".

5. Click Save. The Network Camera will reboot.



6. Wait for the live image to be reloaded to your browser. Then, unplug the power cable and Ethernet cable from the Network Camera.
7. Replug the power cable to the camera. The Network Camera will now operate in wireless mode.



**Note:**

1. SSID, abbreviated from Service Set Identifier, is the name assigned to the wireless network. The IP7154 factory SSID setting is set to "default".
2. Select "Ad-Hoc" wireless mode if you want the IP7154 to communicate without using an AP or wireless router.

For further setup, please refer to the user's manual on the software CD.



P/N: 625009000G Ver.1.01  
Copyright © 2009 VIVOTEK INC. All right reserved.

6F, No.192, Lien-Cheng Rd., Chung-Ho, Taipei County, Taiwan | T: +886 2 82455282 | F: +886 2 82455532 | E: sales@vivotek.com