

Quick Installation Guide

English | 繁體中文 | 簡體中文 | 日本語 | Français | Español | Deutsch | Português | Italiano | Türkçe | Polski | Русский | Česky | Svenska | العربية

IP7161

2-megapixel • Day & Night

Network Camera





Warning Before Installation

- Power off the Network Camera as soon as smoke or unusual odors are detected.
- Keep the Network Camera away from water. If the Network Camera becomes wet, power off immediately.

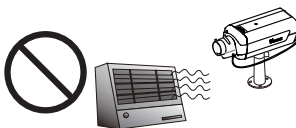
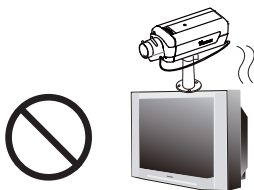


Contact your distributor in the event of occurrence.

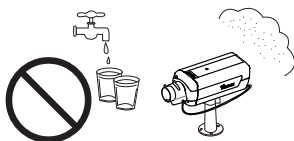
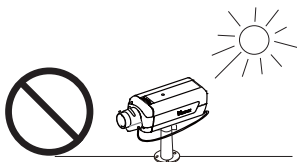


Contact your distributor in the event of occurrence.

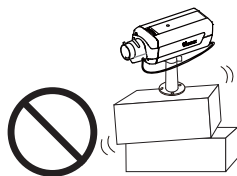
- Do not place the Network Camera around heat sources, such as a television or oven.
- Refer to your user's manual for the operating temperature.



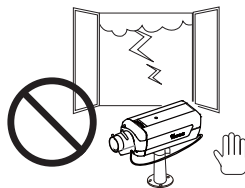
- Keep the Network Camera away from direct sunlight.
- Do not place the Network Camera in high humidity environments.



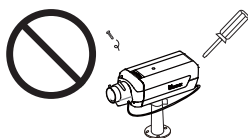
- Do not place the Network Camera on unsteady surfaces.



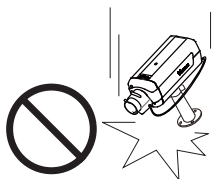
- Do not touch the Network Camera during a lightning storm.



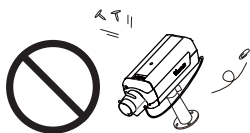
- Do not disassemble the Network Camera.



- Do not drop the Network Camera.

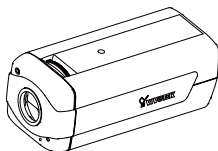


- Do not insert sharp or tiny objects into the Network Camera.

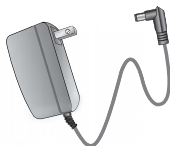


1 Package Contents

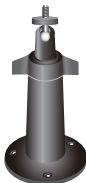
● IP7161



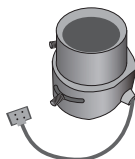
● Power Adapter



● Camera Stand



● CS-mount Lens



● Quick Installation Guide



● Software CD



● Warranty Card



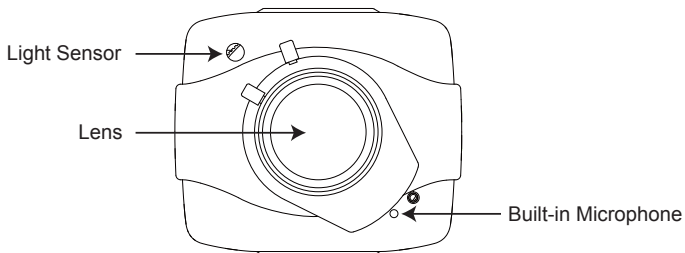
● L-type Hex Key Wrench



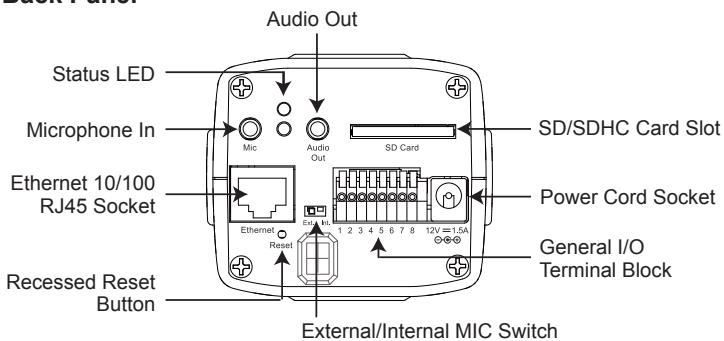
2

Physical Description

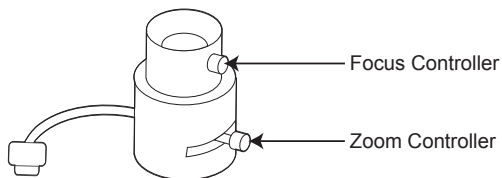
● Front Panel



● Back Panel



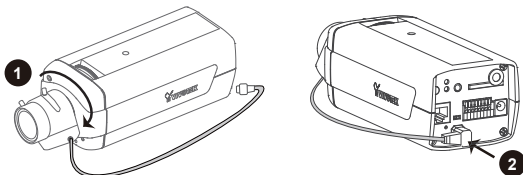
● Lens



3

Mounting the Lens to the Camera

1. Mount the lens by turning it clockwise onto the camera mount until it stops. If necessary, turn the lens counterclockwise slowly until it gets the best attitude.
2. Connect the lens cable plug to the camera connector.

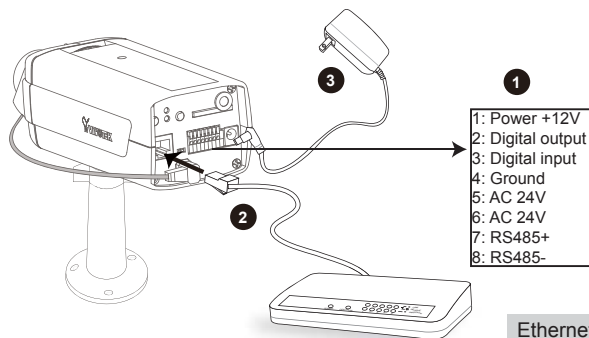


For further setup, please refer to the lens' instruction manual inside the lens package.

4

Network Deployment**General Connection (without PoE)**

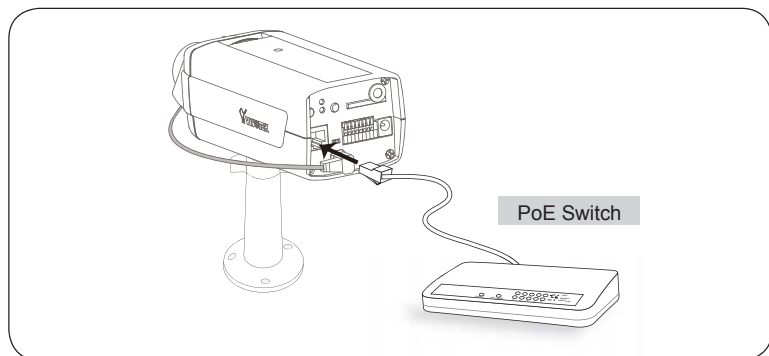
1. If you have external devices such as sensors and alarms, connect them to the general I/O terminal block.
2. Connect the camera to a switch via Ethernet cable.
3. Connect the power cable from the Network Camera to a power outlet.



Power over Ethernet (PoE)

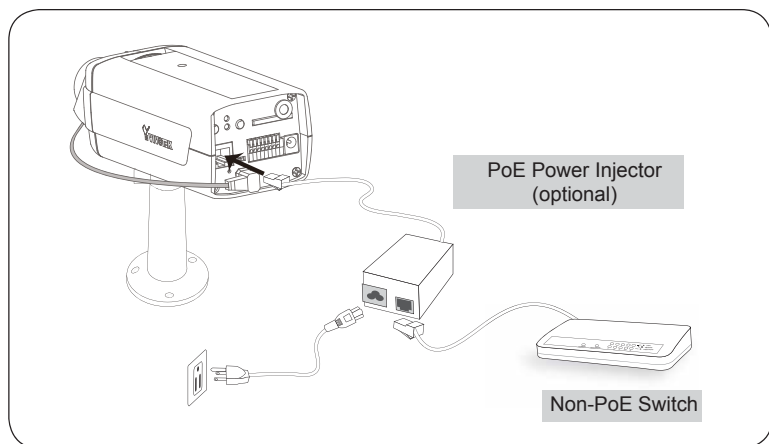
● When using a PoE-enabled switch

The Network Camera is PoE-compliant, allowing transmission of power and data via a single Ethernet cable. Follow the below illustration to connect the Network Camera to a PoE-enabled switch via Ethernet cable.



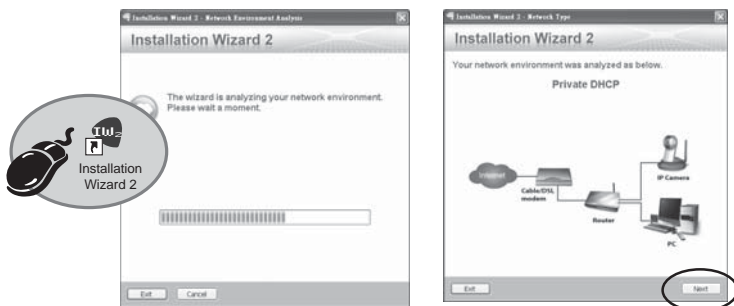
● When using a non-PoE switch

Use a PoE power injector (optional) to connect between the Network Camera and a non-PoE switch.

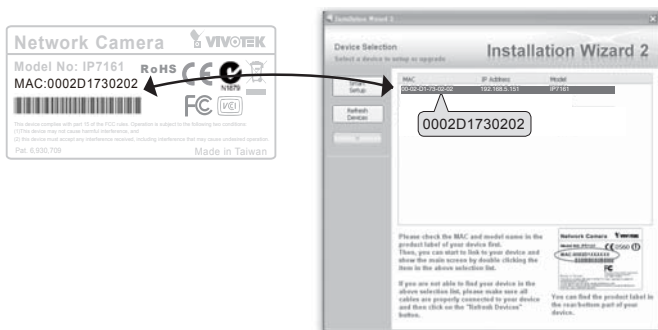


5 Assigning IP Address

1. Install "Installation Wizard 2" from the Software Utility directory on the software CD.
2. The program will conduct an analysis of your network environment. After your network is analyzed, please click on the "Next" button to continue the program.



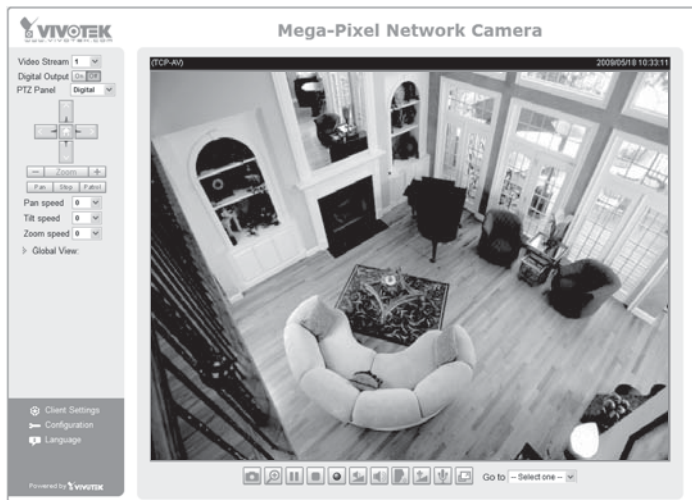
3. The program will search for VIVOTEK Video Receivers, Video Servers, and Network Cameras on the same LAN.
4. After searching, the main installer window will pop up. Click on the MAC that matches the one labeled on the bottom of your device to connect to the Network Camera via Internet Explorer.



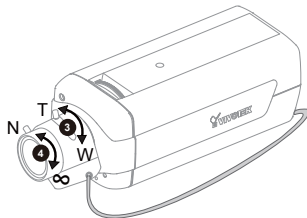
6

Ready to Use

1. Access the Network Camera from the LAN.
2. Retrieve live video through a web browser or recording software.



3. Unscrew the zoom controller to adjust the zoom factor. Upon completion, tighten the zoom controller.
4. Unscrew the focus controller to adjust the focus range. Upon completion, tighten the focus controller.

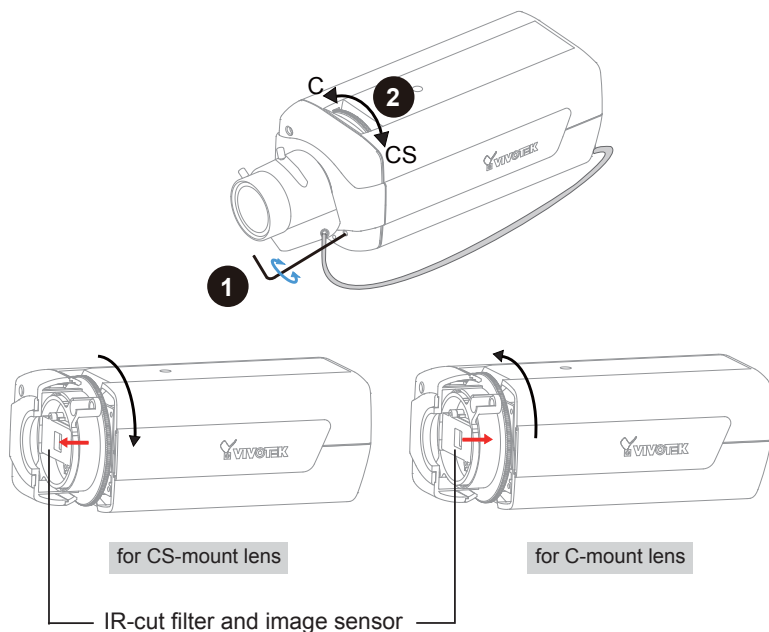


For further setup, please refer to the user's manual on the software CD.

7 Fine-tune the Camera Focus

Please follow the steps below to fine-tune the camera focus:

1. Use the supplied L-type hex key wrench to loosen the ring screw; the adjustment ring will become rotatable.
2. Rotate the adjustment ring to fine-tune the distance between the sensor and the lens; the IR-cut filter and image sensor will move forwards or backwards as the illustration shows below.
3. When finished, tighten the ring screw to fix the adjustment ring.





P/N:625008300G Ver.1.02
Copyright © 2009 VIVOTEK INC. All rights reserved.

6F, No.192, Lien-Cheng Rd., Chung-Ho, Taipei County, Taiwan | T: +886 2 82455282 | F: +886 2 82455532 | E: sales@vivotek.com