

English | 繁中 | 簡中 | 日本語 | Français | Español | Deutsch | Português | Italiano | Türkçe | Polski | Русский | Český | Svenska | العربية

English | 繁中 | 簡中 | 日本語 | Français | Español | Deutsch | Português | Italiano | Türkçe | Polski | Русский | Český | Svenska | العربية

Intelligent Video Content Analysis

Network Camera





Warning Before Install

- **Power off the Network Camera as soon as it is found smoking or smelt unusual.**



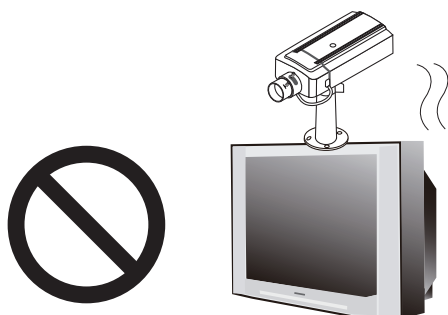
Contact your distributor when such cases happen.

- **Keep the Network Camera away from water. If the Network Camera is wet, power off immediately.**

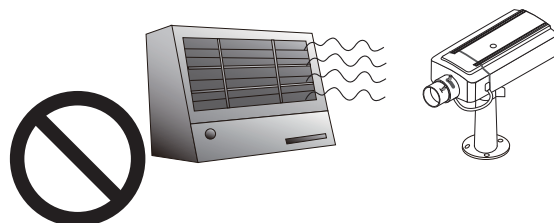


Contact your distributor when such cases happen.

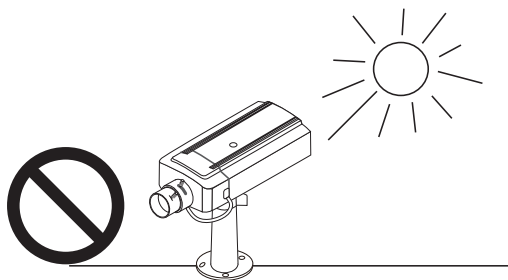
- **Do not place the Network Camera around the heat sources, such as television or oven.**



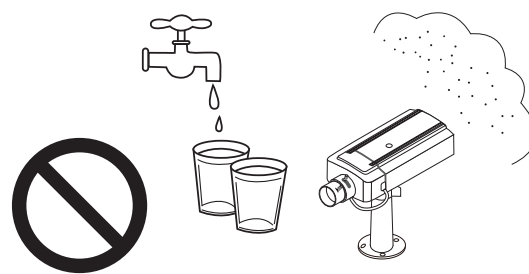
- **Refer to your user's manual for the operating temperature.**



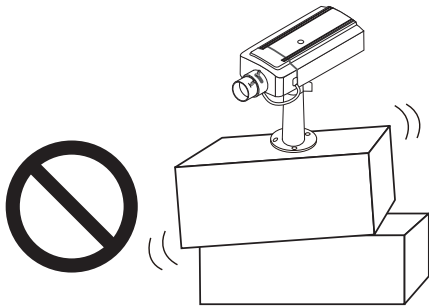
- **Keep the Network Camera away from direct sunlight.**



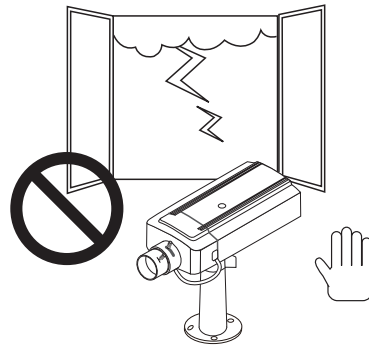
- **Do not place the Network Camera in high humid environments.**



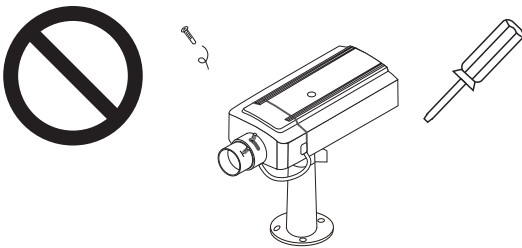
- **Do not place the Network Camera on unsteady surfaces.**



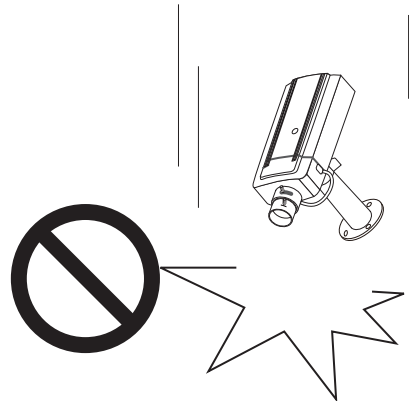
- **Do not touch the Network Camera when it's lightening.**



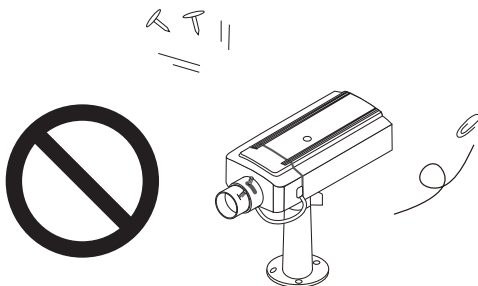
- **Do not disassemble the Network Camera.**



- **Do not drop the Network Camera.**



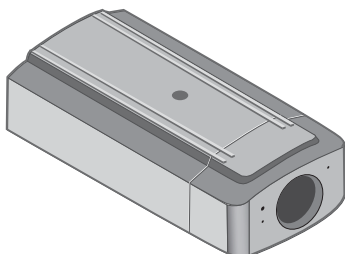
- **Do not insert any object into the Network Camera, such as needles.**



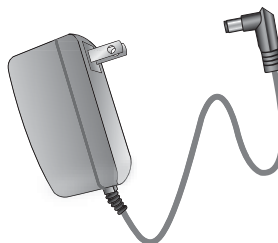
1

Package Contents

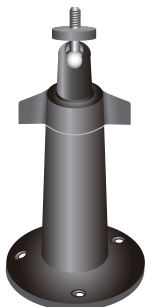
● IP7251



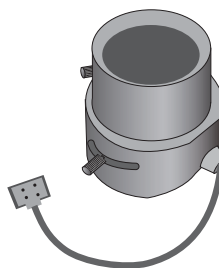
● Power adapter



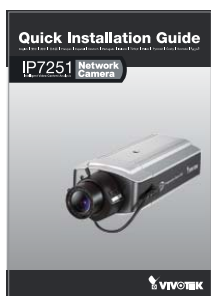
● Camera stand



● CS-mount lens



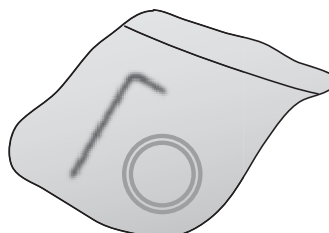
● Quick installation guide



● Software CD

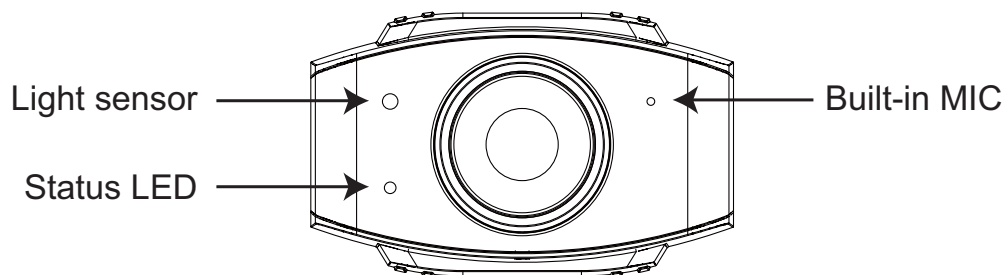


● Warranty card

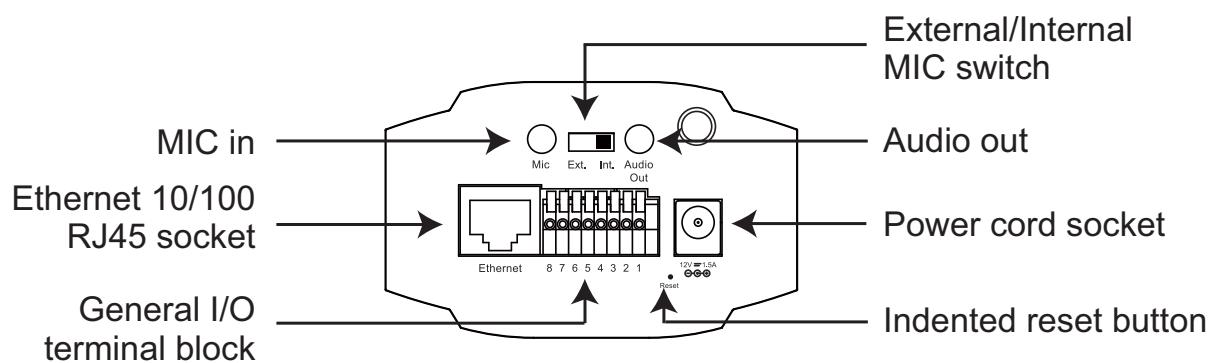
● L-type hex key wrench /
C-mount ring (for C-mount lens)

2 Physical Description

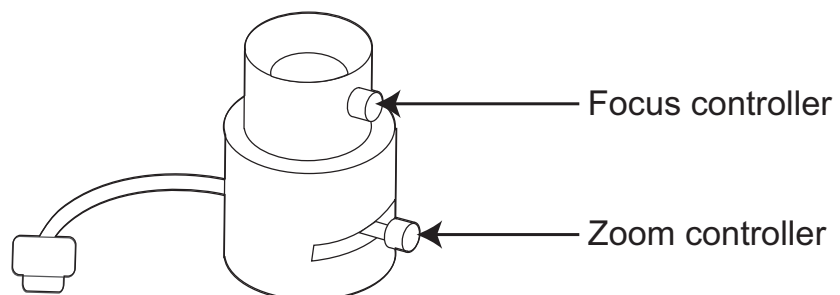
● Front panel



● Back panel

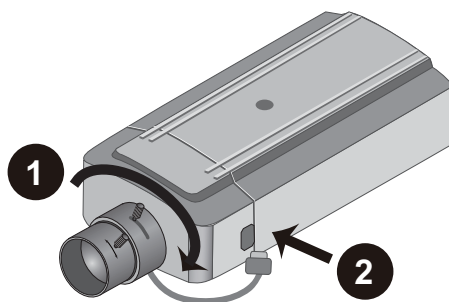


● Lens



3**Mounting the Lens to the Camera**

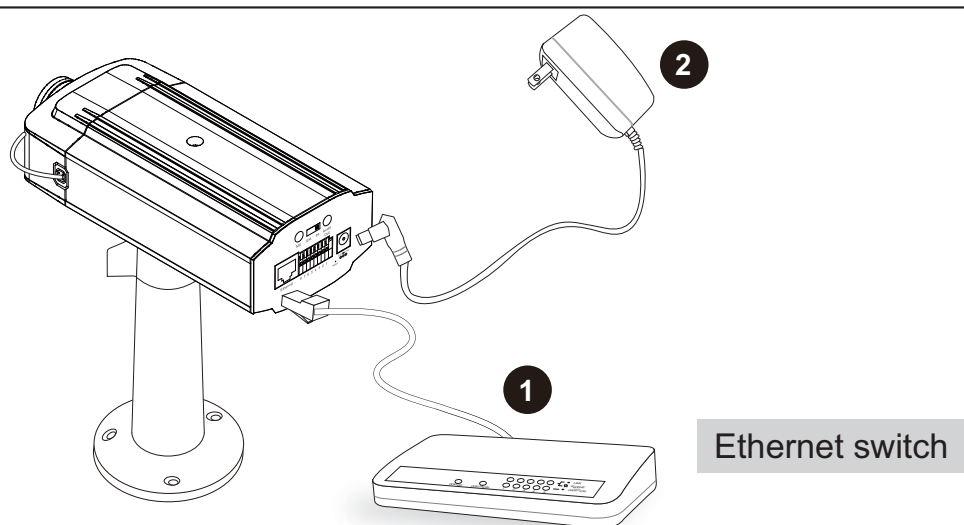
1. Mount the lens by turning it clockwise onto the camera mount until it stops. If necessary, turn the lens counterclockwise slowly until it gets the best attitude.
2. Connect the lens cable plug to the camera connector.



For further setup, please refer to the lens' instruction manual inside the lens package.

4**Network Deployment****General Connection (without PoE)**

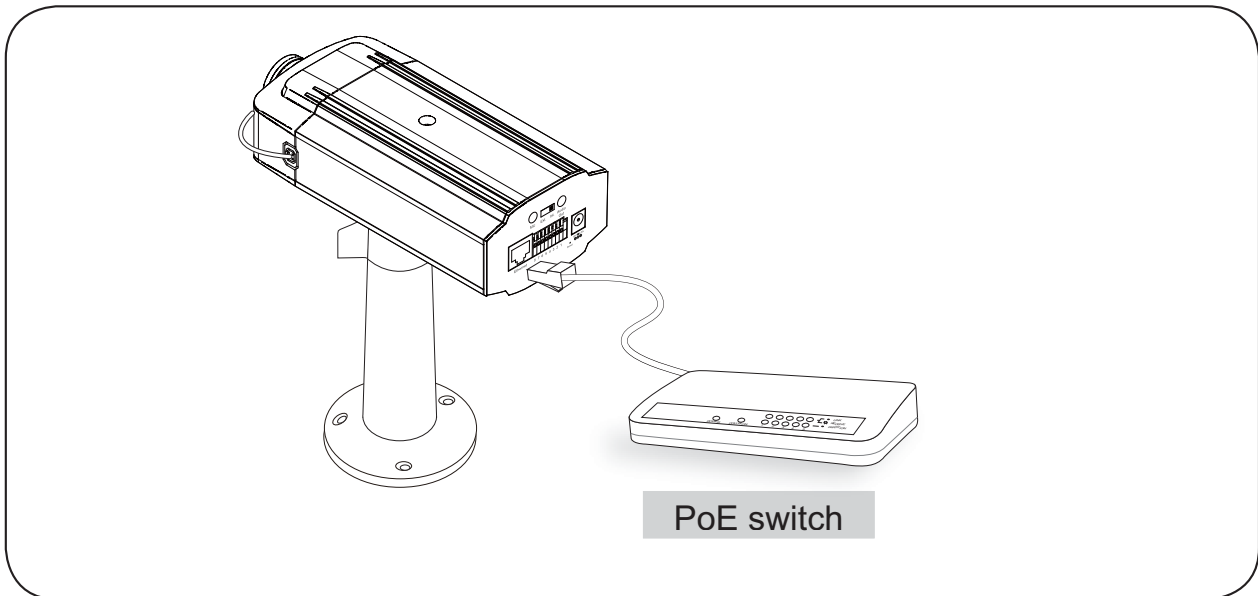
1. Connect the camera to a switch via Ethernet cable.
2. Connect the supplied power cable from the camera to a power outlet.



Power over Ethernet (PoE)

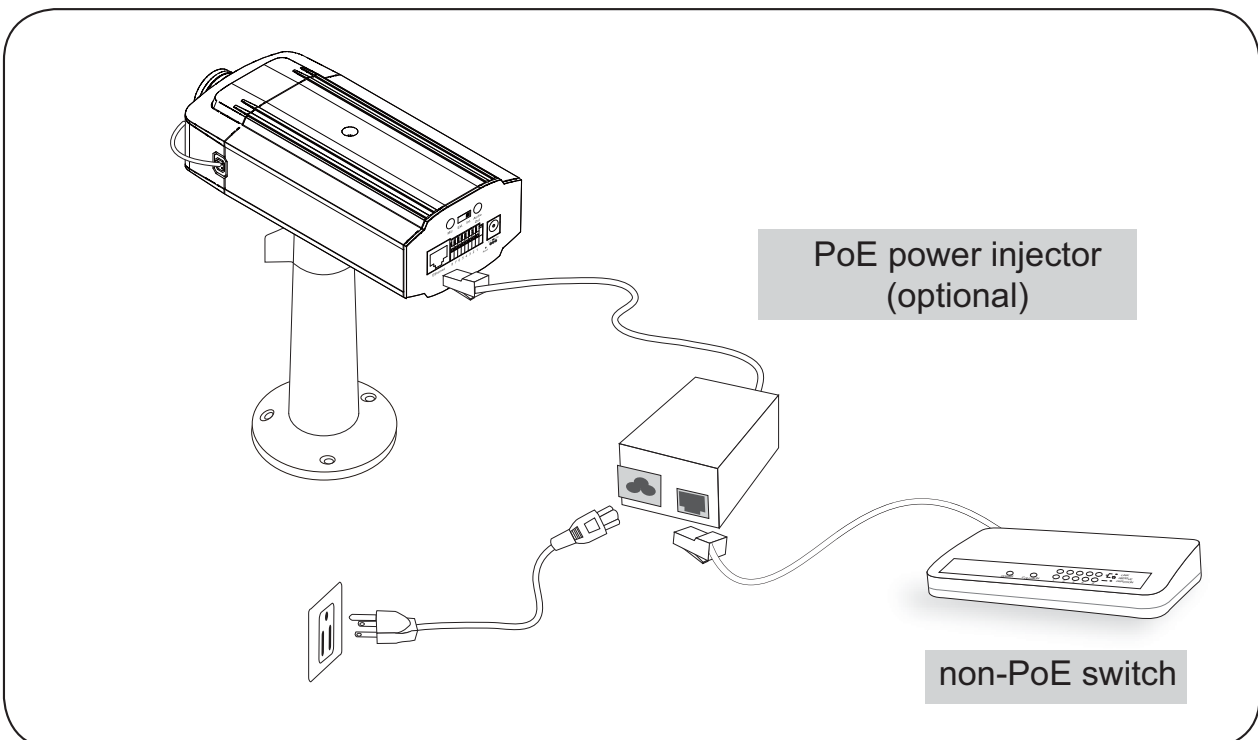
● **When using a PoE-enabled switch**

The camera is PoE-compliant, allowing transmission of power and data via single Ethernet cable. See the following illustration to connect the camera to a PoE-enabled switch via Ethernet cable.



● **When using a non-PoE switch**

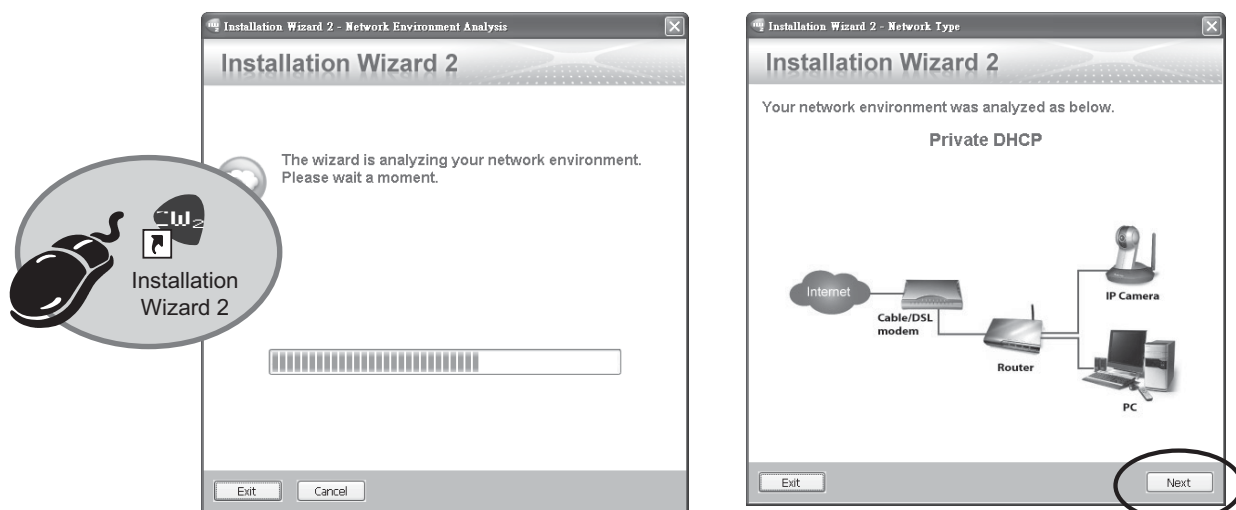
Use a PoE power injector (optional) to connect between the camera and a non-PoE switch.



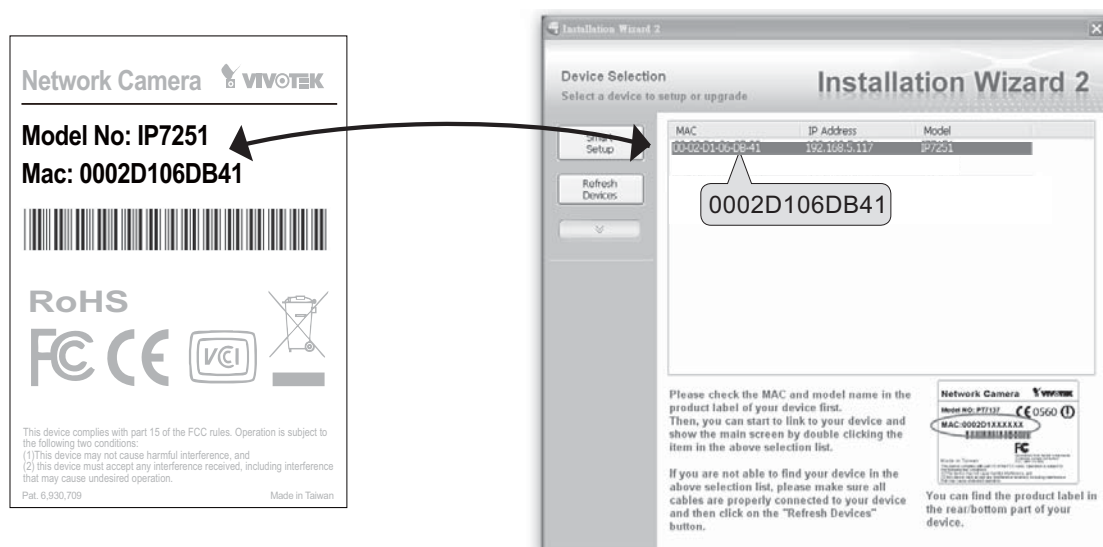
5

Assigning IP Address

1. Install the "Installation Wizard 2" under the Software Utility directory from software CD.
2. The program will conduct analyses on your network environment. After your network is analyzed, please click on the "Next" button to continue the program.



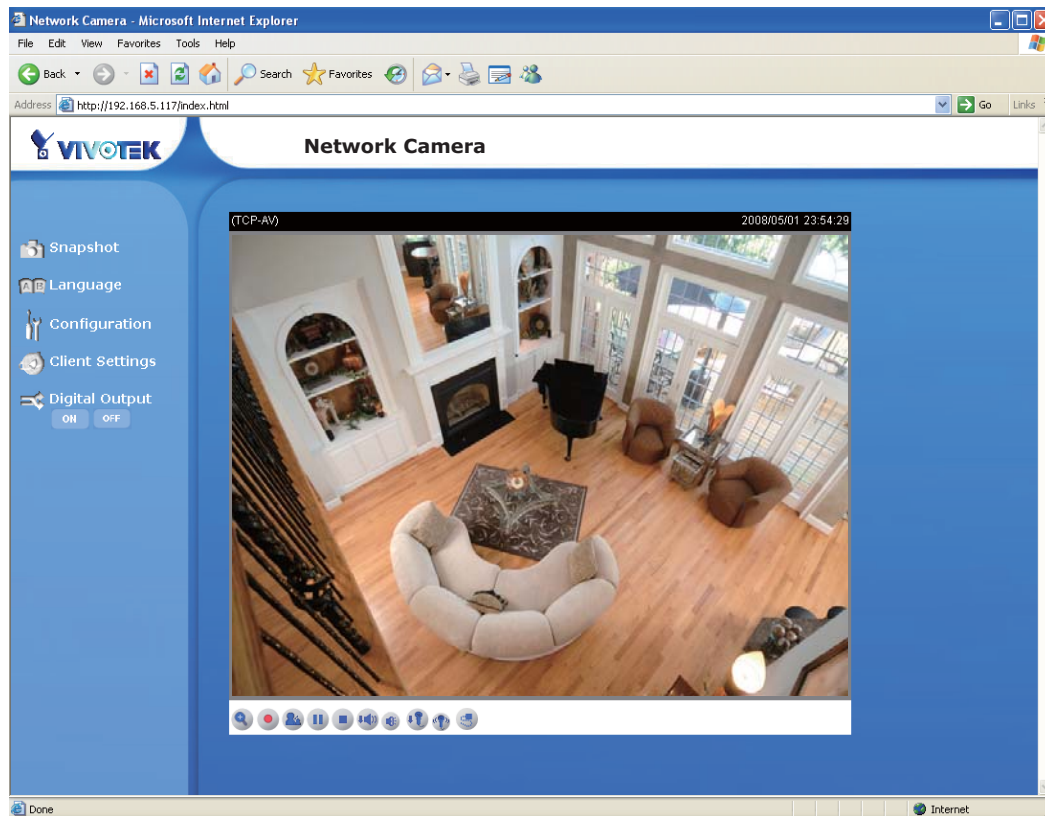
3. The program will search the VIVOTEK Video Receivers, Video Servers or Network Cameras on the same LAN.
4. After searching, the main installer window will pop up. Click on the MAC that matches the one labeled on the bottom of your device to connect the Internet Explorer to the Network Camera.



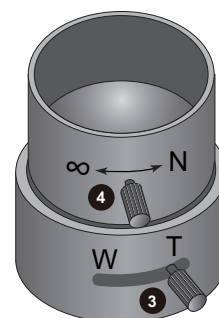
6

Ready to Use

1. Access to the Network Camera from the Internet.
2. Retrieve live video through web browsers or recording software.



3. Unscrew the zoom controller to adjust the zoom factor. Upon completion, tighten the zoom controller.
4. Unscrew the focus controller to adjust the focus range. Upon completion, tighten the focus controller.

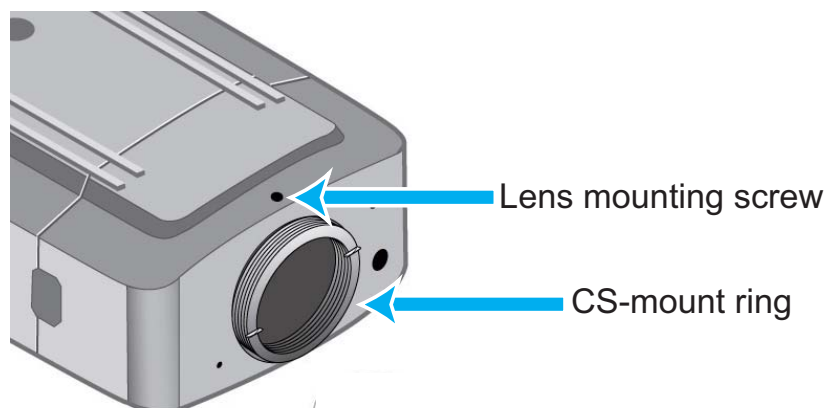


For further setup, please refer to user's manual on the software CD.

7

Fine-tune the Camera Focus

1. Detach the CS-mount lens from the camera body.
2. Turn the camera body bottom up.
3. Use the supplied L-type hex key wrench to loosen the lens mounting screw; the CS-mount ring becomes rotatable.
4. Use a coin to turn the CS-mount ring; fine-tune the distance between the sensor and the lens.
5. When finished, tighten the lens mounting screw to fix the CS-mount ring.
6. Attach the CS-mount lens back to the camera body.





P/N:625006300G Ver.1.0
Copyright © 2008 VIVOTEK INC. All rights reserved.

6F, No.192, Lien-Cheng Rd., Chung-Ho, Taipei County, Taiwan | T: +886 2 82455282 | F: +886 2 82455532 | E: sales@vivotek.com