

Quick Installation Guide

English | 繁體中文 | 簡體中文 | 日本語 | Français | Español | Deutsch | Português | Italiano | Türkçe | Polski | Русский | Česky | Svenska | العربية

IP7361 Network Camera

Outdoor • 2 MP • Day & Night



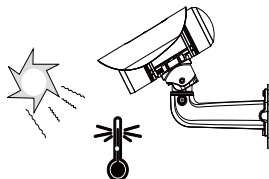


Warning Before Installation

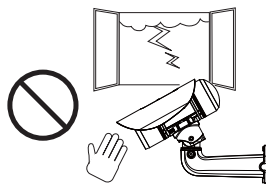
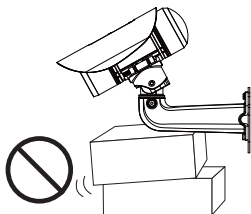
- **Power off the Network Camera as soon as smoke or unusual odors are detected.**
- **Refer to your user's manual for the operating temperature.**



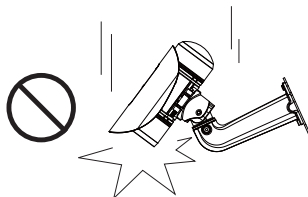
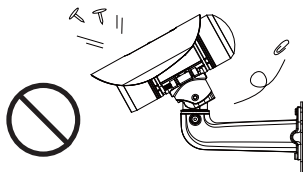
Contact your distributor in the event of occurrence.



- **Do not place the Network Camera on unsteady surfaces.**
- **Do not touch the Network Camera during a lightning storm.**



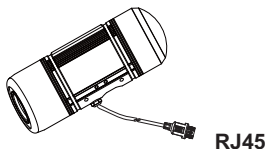
- **Do not insert sharp or tiny objects into the Network Camera.**
- **Do not drop the Network Camera.**



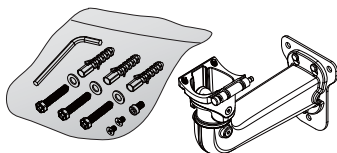
1

Package Contents

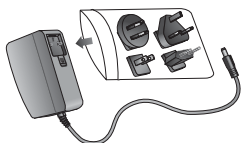
- IP7361 with an RJ45 Cable



- Wall Mount Bracket



- Power Adapter



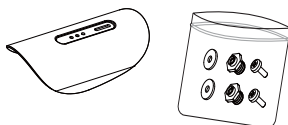
- Waterproof Connector (for backup use)



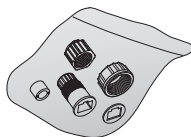
- Quick Installation Guide



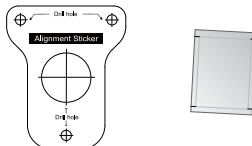
- Sun Shield



- Waterproof Connector for RJ45 Ethernet Enclosure



- Alignment Sticker / Silica Gel



- Software CD

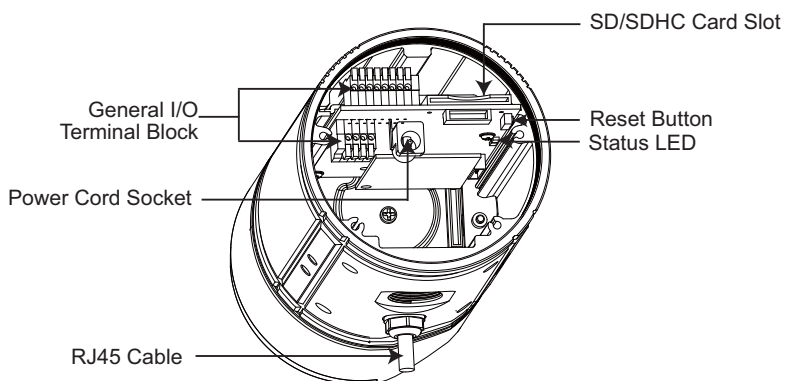
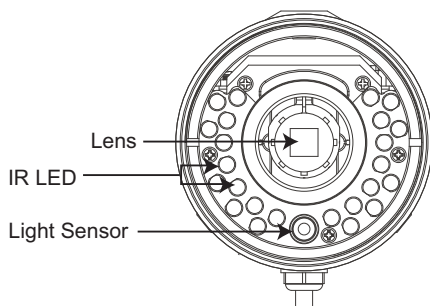


- Warranty Card



2

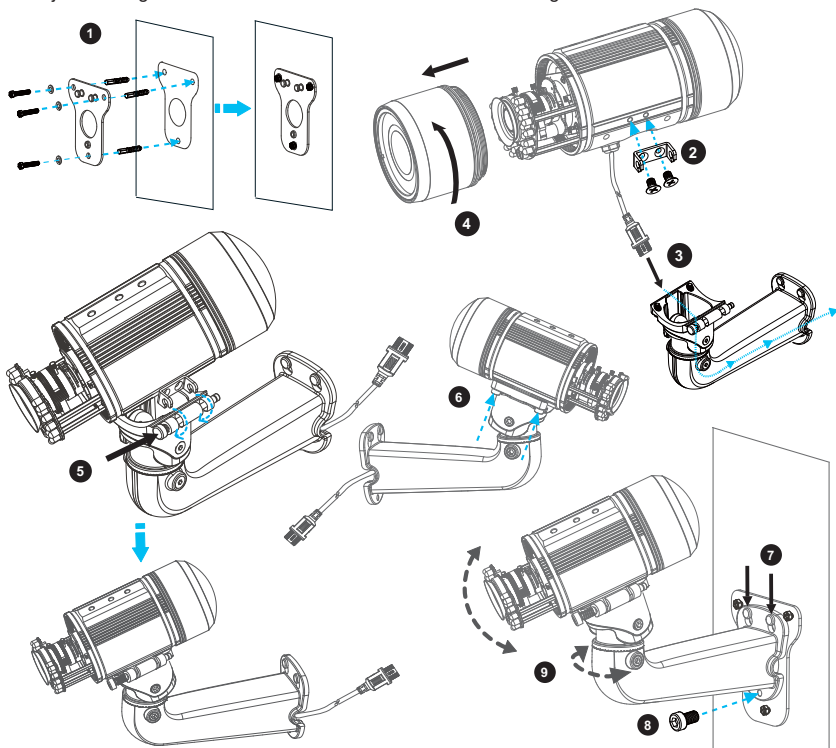
Physical Description



3

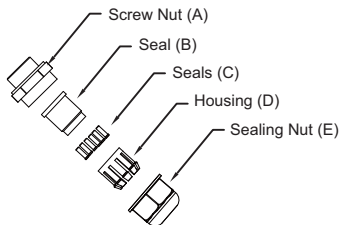
Hardware Installation

1. Attach the alignment sticker to the wall. Drill four holes into the wall. Then hammer the supplied plastic anchors into the holes and secure the plate with supplied screws.
2. Fix the 17-bracket to the side of the Network Camera with two screws.
3. Feed the RJ45 cable through the front opening of the wall mount bracket. (If you want to use external devices such as sensors and alarms, please refer to the assembling steps on the next page.)
4. Open the lens cover.
5. Push the spring mortise and hook the bracket onto the groove of the wall mount bracket.
6. Secure the two screws on the other side of the wall mount bracket.
7. Hang the wall mount bracket on the plate.
8. Fix the wall mount bracket with the supplied screw.
9. Adjust the angle of the wall mount bracket to aim at the shooting area.

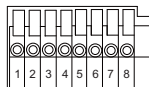


Waterproof Connector

● Components of the Waterproof Connector



● Pin Definition

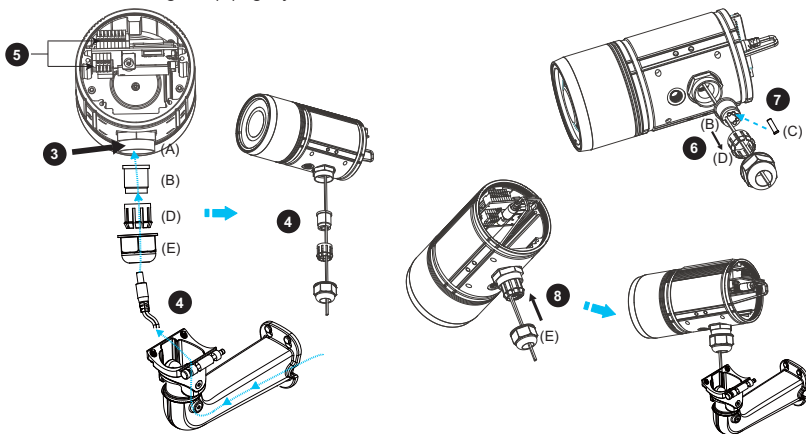


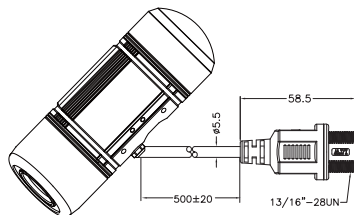
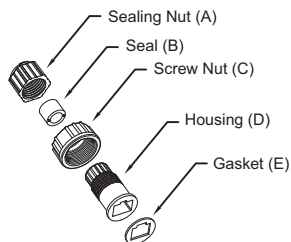
1	Power +12V
2	Digital Output
3	Digital Input
4	Ground
5	AC 24V
6	AC 24V
7	RS485 +
8	RS485 -

1	External MIC In
2	Ground
3	Audio Out
4	Ground

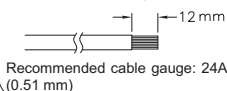
● Assembling Steps

1. Disassemble the components of the waterproof connector into part (A) ~ (E) as shown above.
2. Open the back cover of the Network Camera.
3. Remove the rubber stopper from the bottom of the Network Camera and secure the screw nut (A) tightly.
4. If you need extra power for external devices, please feed the power cable through the wall mount bracket and the waterproof connector (E → D → B → A) as the illustration shown below. Then connect the power cord to the socket. Note: There are 7 holes on the seal (B), and the widest hole with a crack on the side is specific for power cord.
5. If you have external devices such as sensors and alarms, feed the cables through the wall mount bracket and the waterproof connector (E → D → B → A) as the illustration shown below. Then refer to the pin definition to connect them to the general I/O terminal block. Note: The recommended cable gauge is 2.0 ~ 2.8 mm.
6. Push the seal (B) into the housing (D).
7. Insert the seals (C) into the empty holes on the seal (B) to avoid moisture.
8. Secure the sealing nut (E) tightly.

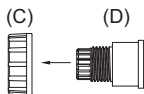


RJ45 Cable Connector● **RJ45 Cable Dimension (unit: mm)**● **Components of the Waterproof Connector**● **Assembling Steps**

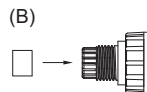
- 1** Prepare an Ethernet cable and strip part of the sheath.



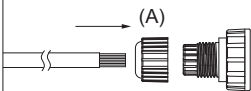
- 2** Insert the housing into the screw nut.



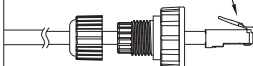
- 3** Insert the seal into the housing.



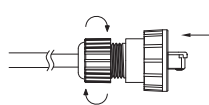
- 4** Insert the stripped Ethernet cable through the sealing nut and the housing.



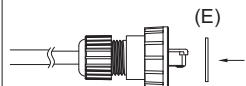
- 5** Clamp the cable with an RJ45 plug.



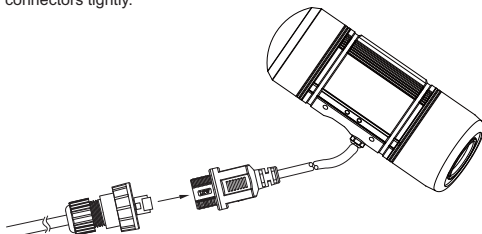
- 6** Push the RJ45 plug into the housing, then secure the sealing nut tightly.



- 7** Attach the gasket to the front of the housing.



- 8** Connect the Ethernet cable to the RJ45 cable and secure the connectors tightly.

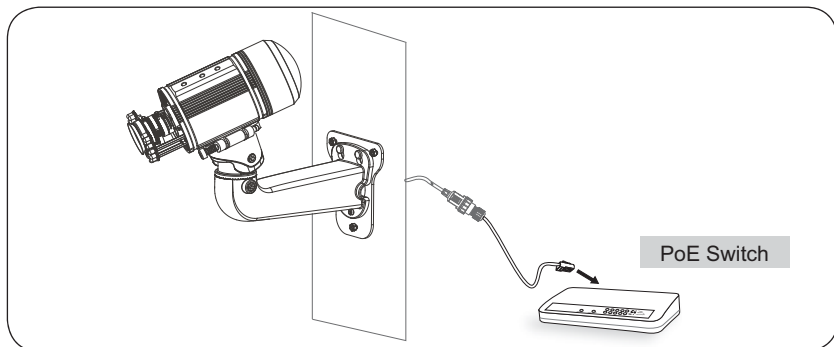


5

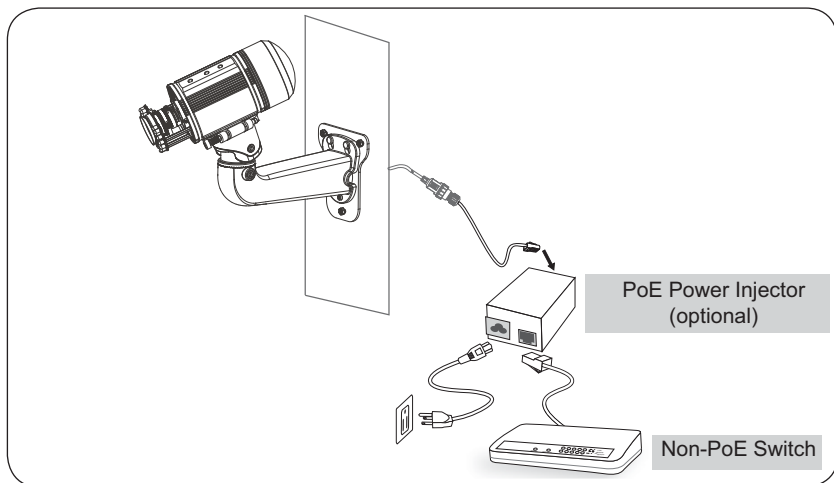
Network Deployment

Power over Ethernet (PoE)**● When using a PoE-enabled switch**

The Network Camera is PoE-compliant, allowing transmission of power and data via a single Ethernet cable. Follow the below illustration to connect the Network Camera to a PoE-enabled switch via Ethernet cable.

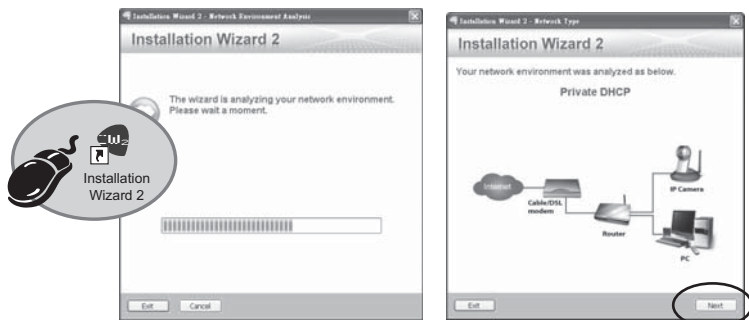
**● When using a non-PoE switch**

Use a PoE power injector (optional) to connect between the Network Camera and a non-PoE switch.

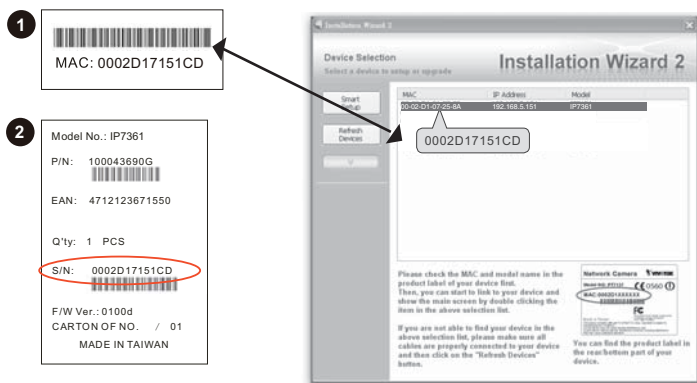


6 Assigning an IP Address

1. Install "Installation Wizard 2" from the Software Utility directory on the software CD.
2. The program will conduct an analysis of your network environment. After your network is analyzed, please click on the "Next" button to continue the program.



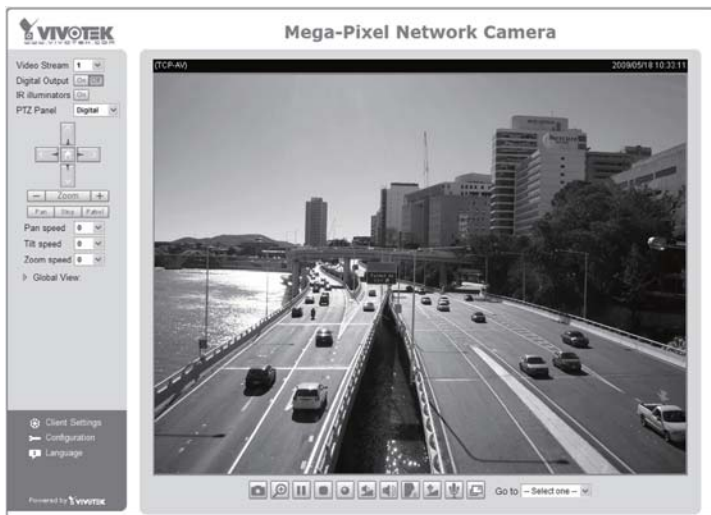
3. The program will search for VIVOTEK Video Receivers, Video Servers, and Network Cameras on the same LAN.
4. After searching, the main installer window will pop up. Click on the MAC that matches the one labeled on the side of the camera or S/N number on the label of carton to connect the Internet Explorer to the Network Camera.



7

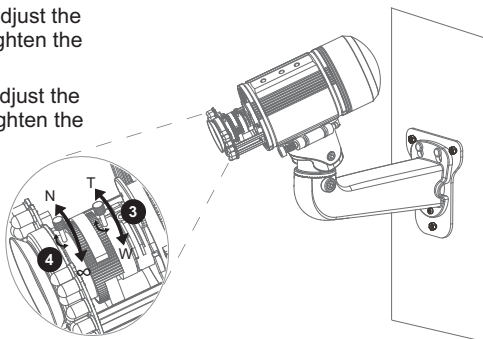
Ready to Use

1. Access the Network Camera from the LAN.
2. Retrieve live video through a web browser or recording software.

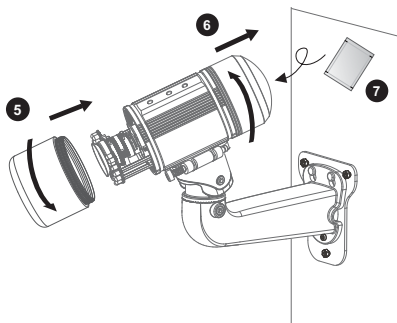


For further setup, please refer to the user's manual on the software CD.

3. Unscrew the zoom controller to adjust the zoom factor. Upon completion, tighten the zoom controller.
4. Unscrew the focus controller to adjust the focus range. Upon completion, tighten the focus controller.



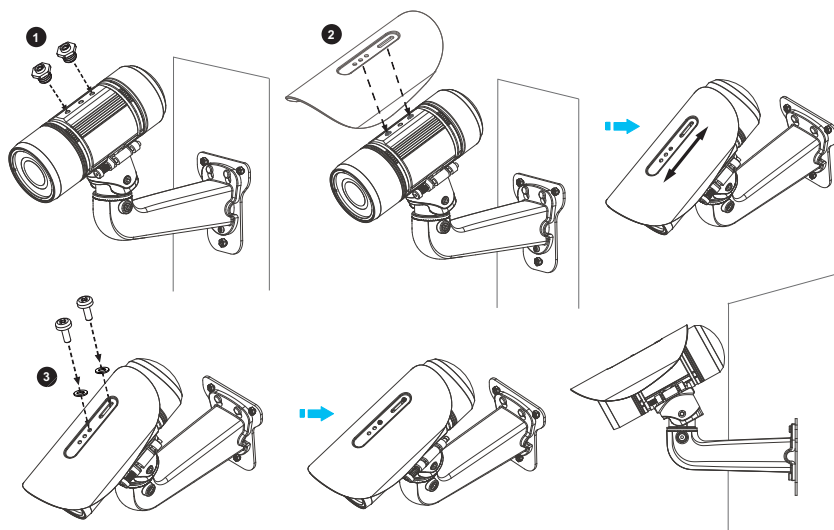
5. Tighten the lens cover.
6. Open the back cover.
7. Tear down the aluminum foil vacuum bag and take out the silica gel. Attach the silica gel to the inner side of the back cover, then tighten the back cover. (Please replace the silica gel with a new one if you open the back cover after installation.)



Note

If you want to use the supplied sun shield for outdoor environments, please follow the steps below to install:

1. Tighten the supplied two screws.
2. Attach the supplied sun shield to the Network Camera and slide it to the desired position.
3. Fix the sun shield with the supplied two screws.

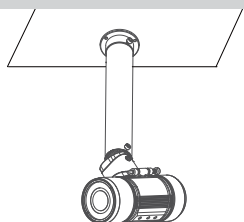


8

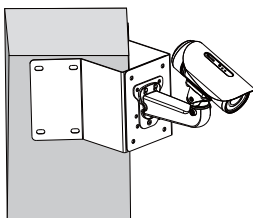
Accessories

VIVOTEK also provides other accessories for versatile applications as the following illustrations. Please visit VIVOTEK's official website for more purchase information.

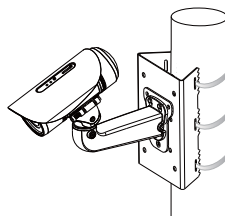
Pendant Mount Bracket



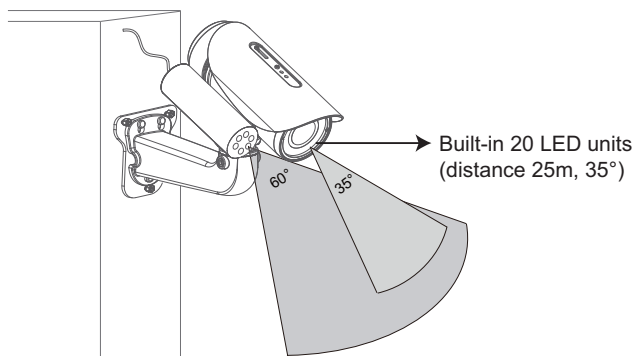
Corner Mount Bracket



Pole Mount Bracket



IR illuminator (distance 30m, 60°)



The 30m, 60° IR illuminator extends the coverage of the Network Camera and reduces the halo effect around captured images.





6F, No.192, Lien-Cheng Rd., Chung-Ho, Taipei County, Taiwan

| T: +886 2 82455282

| F: +886 2 82455532

| E: sales@vivotek.com

P/N: 625010000G Ver.1.0
Copyright © 2009 VIVOTEK INC. All rights reserved.