

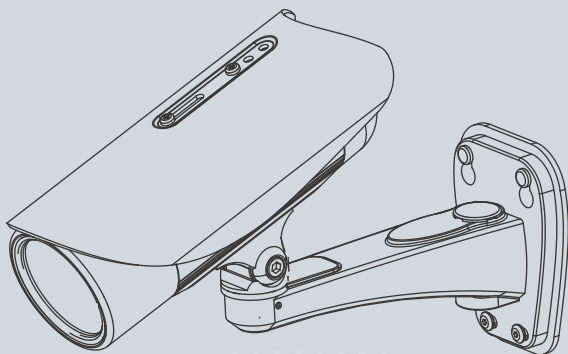


IP8352 Bullet Network Camera

Quick Installation Guide

English | 繁體中文 | 簡體中文 | 日本語 | Français | Español | Deutsch | Português | Italiano | Türkçe | Polski | Русский | Česky | Svenska | العربية

Supreme Night Visibility • 1.3MP • 60fps



SUPREME

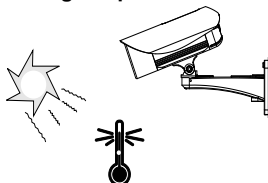


Warning Before Installation

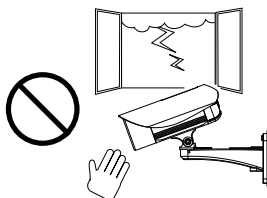
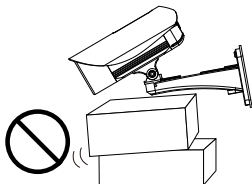
- Power off the Network Camera as soon as smoke or unusual odors are detected.
- Refer to your user's manual for the operating temperature.



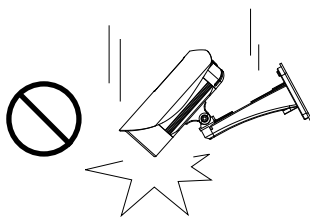
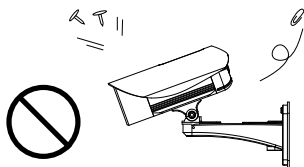
Contact your distributor in the event of occurrence.



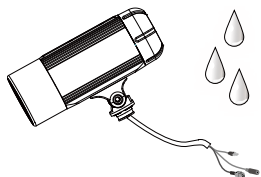
- Do not place the Network Camera on unsteady surfaces.
- Do not touch the Network Camera during a lightning storm.



- Do not insert sharp or tiny objects into the Network Camera.
- Do not drop the Network Camera.



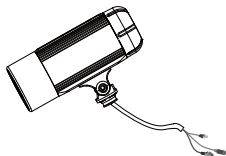
- Replacing or failing to properly install the waterproof components, e.g., cables or cable glands, will void our IP65/66/67 warranty.



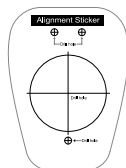
1

Package Contents

● IP8352

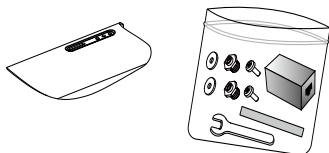


● Alignment Sticker

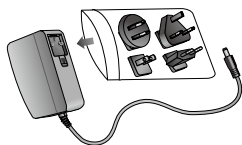


● Sun Shield

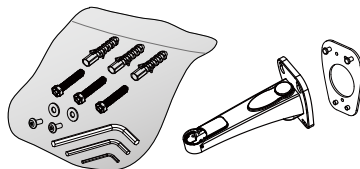
Wrench / RJ45 Female/Female Coupler / Double-sided Tape / Screws



● Power Adapter



● Wall Mount Bracket



● Waterproof Connector (Optional)



● Moisture Absorber



● Quick Installation Guide / Warranty Card

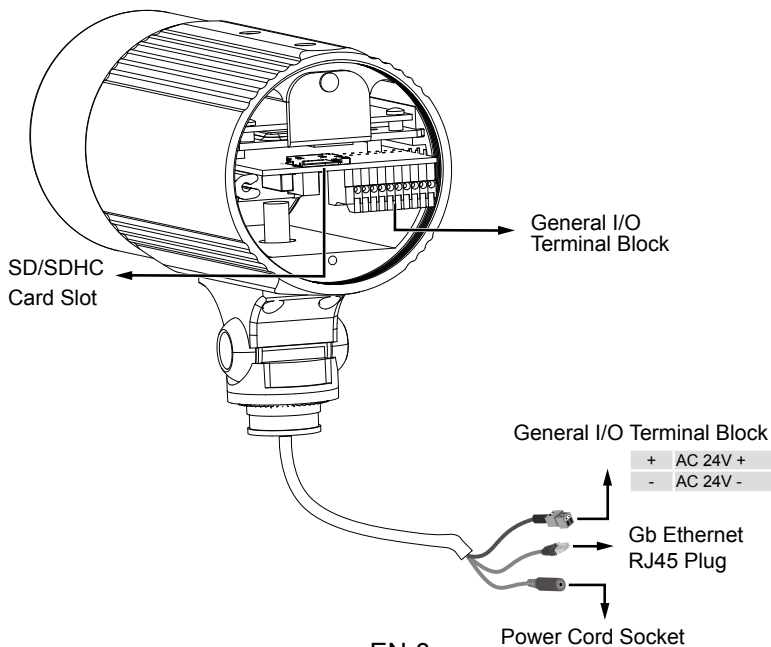
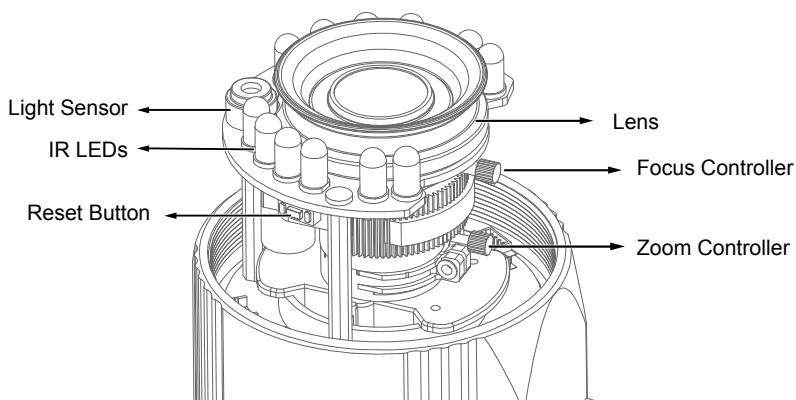


● Software CD



2

Physical Description

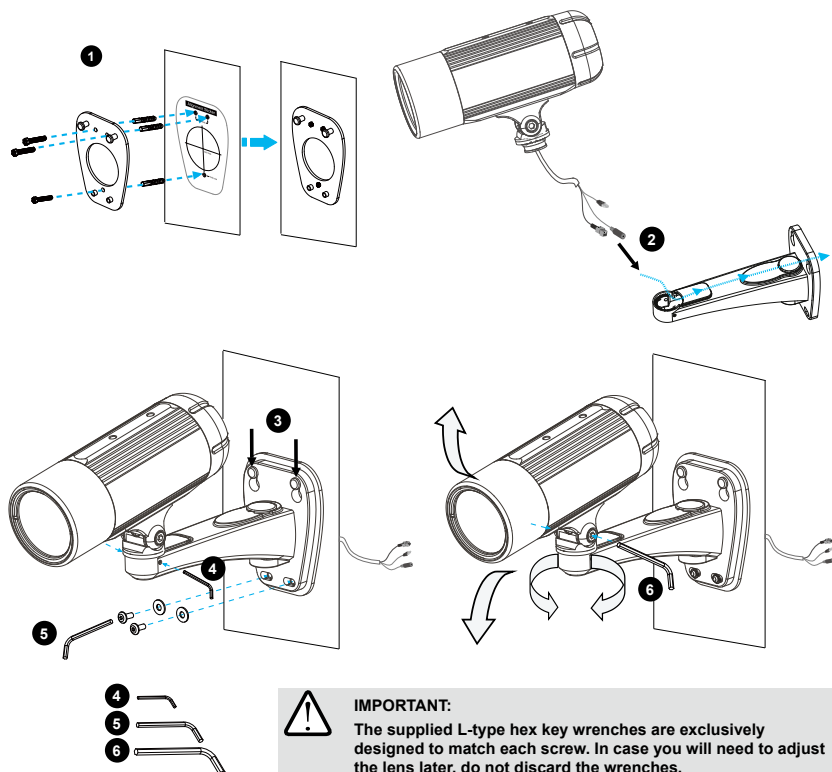


EN-3

3

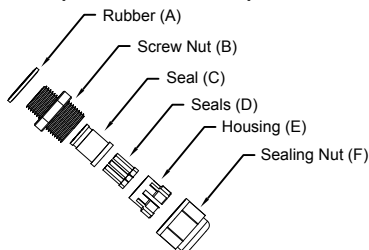
Hardware Installation

1. Attach the alignment sticker to the wall. Drill three holes into the wall. Then hammer the supplied plastic anchors into the holes and secure the plate with supplied screws.
2. Feed the cables through the front opening of the wall mount bracket. (If you want to use external devices such as sensors and alarms, please refer to the assembling steps on the next page.)
3. Hang the wall mount bracket on the plate.
4. Fix the Network Camera on the wall mount bracket with two screws on both sides.
5. Secure the wall mount bracket with the supplied screws.
6. Adjust the angle of the wall mount bracket to aim at the shooting area.



Waterproof Connector

Components of the Waterproof Connector



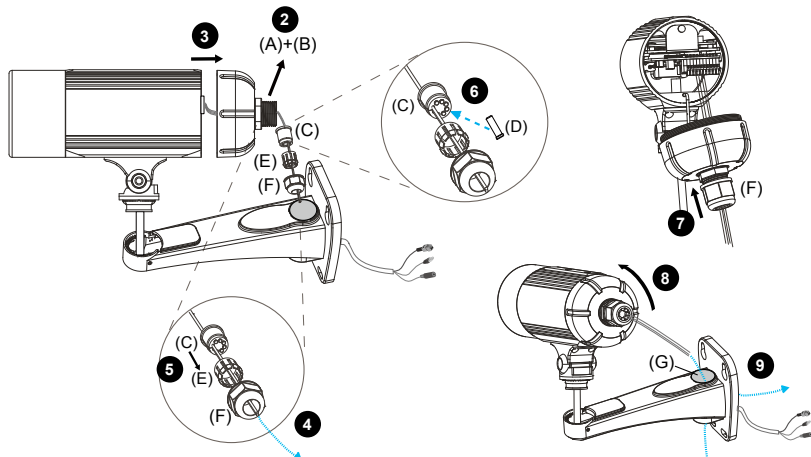
Pin Definition



1	Power +12V
2	Digital Output
3	Digital Input
4	Ground
5	RS485 +
6	RS485 -
7	Ground
8	Audio Input
9	Ground
10	Audio Output

Assembling Steps

1. Disassemble the components of the waterproof connector into part (A) ~ (F) as shown above.
2. Remove the rubber stopper from the bottom of the Network Camera and secure the rubber (A) and screw nut (B) tightly.
3. Open the back cover of the Network Camera.
4. If you have external devices such as sensors and alarms, feed the cables through the waterproof connector (F → E → C → A+B) as the illustration shown below. Then refer to the pin definition to connect them to the general I/O terminal block. Note: The recommended cable gauge is 2.0 ~ 2.8 mm.
5. Push the seal (C) into the housing (E).
6. Insert the seals (D) into the empty holes on the seal (C) to avoid moisture.
7. Secure the sealing nut (F) tightly.
8. Tighten the back cover.
9. Remove rubber (G) and feed the cables through the wall mount bracket.

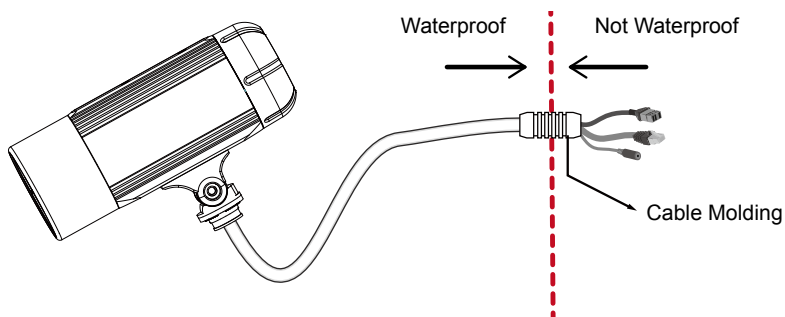




IMPORTANT:

Although the camera and the cable gland on the camera's end are waterproof, the cable molding at the other end is not waterproof.

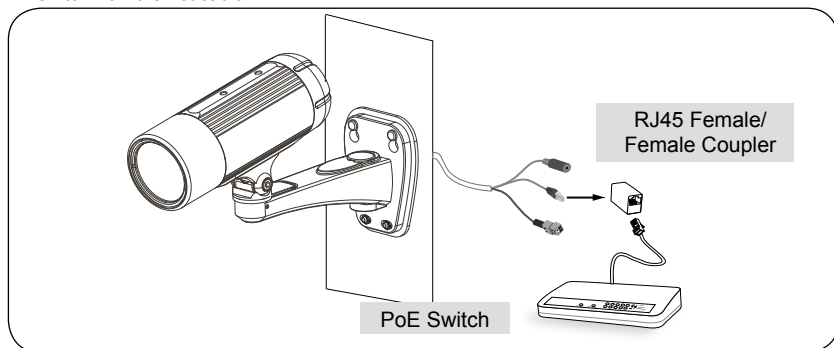
Measures should be taken to prevent water from leaking in through the cable-end molding, such as the use of expanding foam sealant, putties, and so on. Note that the cable gland on the camera should also be securely fastened to attain its waterproof functionality.



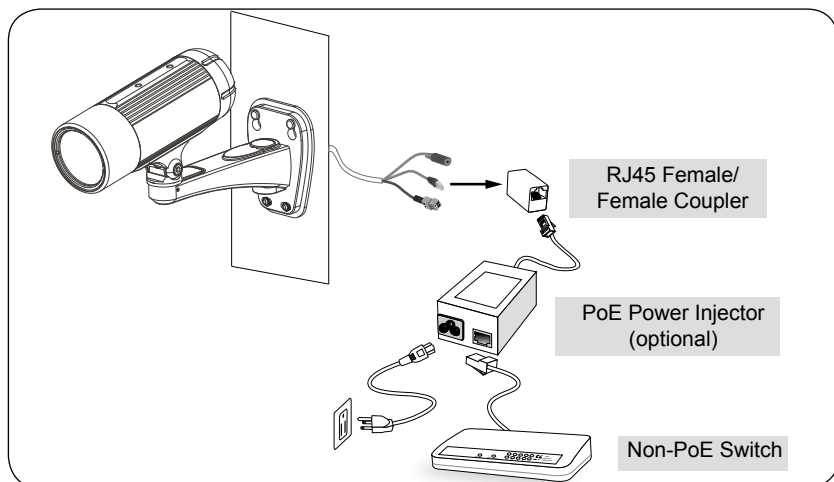
4

Network Deployment**Power over Ethernet (PoE)****When using a PoE-enabled switch**

The Network Camera is PoE-compliant, allowing transmission of power and data via a single Ethernet cable. Follow the below illustration to connect the Network Camera to a PoE-enabled switch via Ethernet cable.

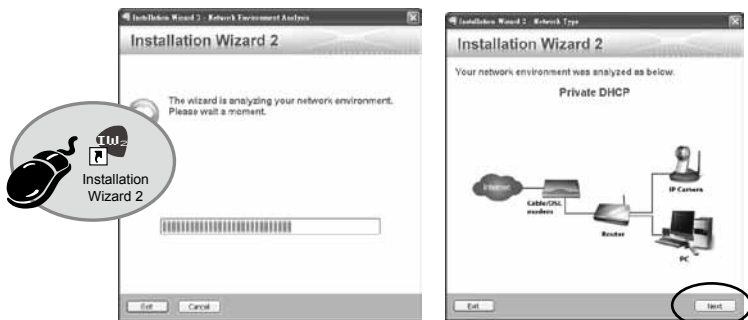
**When using a non-PoE switch**

Use a PoE power injector (optional) to connect between the Network Camera and a non-PoE switch.



5 Assigning an IP Address

1. Install "Installation Wizard 2" from the Software Utility directory on the software CD.
2. The program will conduct an analysis of your network environment. After your network is analyzed, please click on the "Next" button to continue the program.



3. The program will search for VIVOTEK Video Receivers, Video Servers, and Network Cameras on the same LAN.
4. After a brief search, the main installer window will pop up. Double-click on the MAC address that matches the one printed on the camera label or the S/N number on the package box label to open a browser management session with the Network Camera.



6

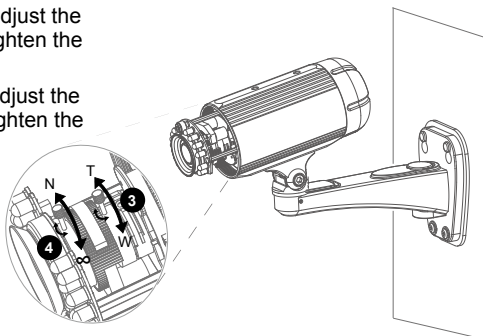
Ready to Use

1. A browser session with the Network Camera should prompt as shown below.
2. You should be able to see live video from your camera. You may also install the 32-channel recording software from the software CD in a deployment consisting of multiple cameras. For its installation details, please refer to its related documents.



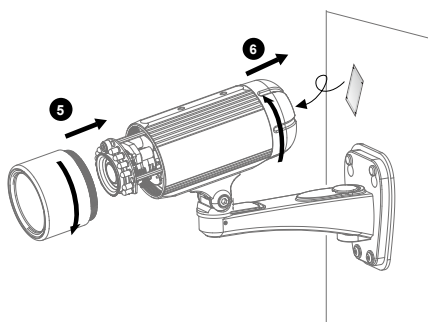
For further setup, please refer to the user's manual on the software CD.

3. Unscrew the zoom controller to adjust the zoom factor. Upon completion, tighten the zoom controller.
4. Unscrew the focus controller to adjust the focus range. Upon completion, tighten the focus controller.



5. Tighten the lens cover.

6. Replace the moisture absorber with a new one if you open the back cover during the installation procedure.



IMPORTANT:

Please tear down the aluminum foil vacuum bag and take out the moisture absorber, then attach the absorber with the supplied double-sided tape.



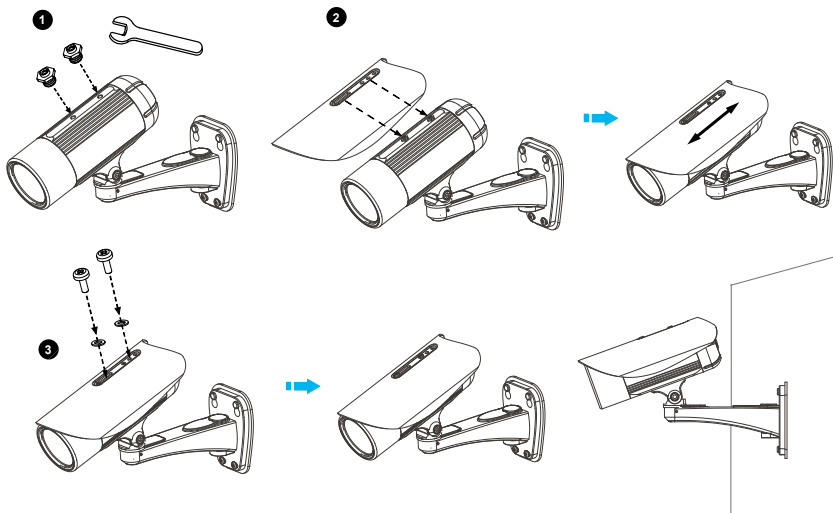
NOTE:

If you want to use the supplied sun shield for outdoor environments, please follow the steps below to install:

1. Tighten the supplied two screws.

2. Attach the supplied sun shield to the Network Camera and slide it to the desired position.

3. Fix the sun shield with the supplied two screws.



P/N:625015301G Rev. 1.1

All specifications are subject to change without notice.
Copyright © 2012 VIVOTEK INC. All rights reserved.



VIVOTEK INC.

6F, No.192, Lien-Cheng Rd., Chung-Ho, New Taipei City, 235, Taiwan, R.O.C.
| T: +886-2-82455282 | F: +886-2-82455532 | E: sales@vivotek.com

VIVOTEK USA, INC.

2050 Ringwood Avenue, San Jose, CA 95131
| T: 408-773-8686 | F: 408-773-8298 | E: salesusa@vivotek.com