



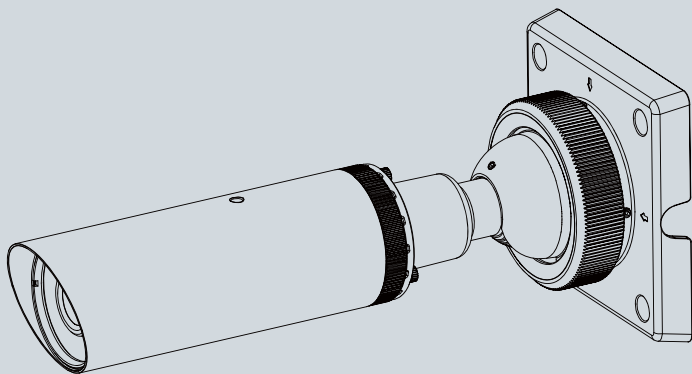
IP8364-C Bullet Network Camera

# Quick Installation Guide

English | 繁體中文 | 简体中文 | 日本語 | Français | Español | Deutsch | Português | Italiano | Türkçe | Polski | Русский | Český | Svenska | Nederlands

Dansk | Indonesia | العربية

Outdoor • Day & Night • Weather-proof • Cable Management





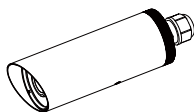
## Warning Before Installation

- Power off the Network Camera as soon as smoke or unusual odors are detected.
- Do not place the Network Camera on unsteady surfaces.
- Do not insert sharp or tiny objects into the Network Camera.
- Replacing or failing to properly install the waterproof components, e.g., cables or cable glands, will void our IP65/66/67 warranty.
- Refer to your user's manual for the operating temperature.
- Do not touch the Network Camera during a lightning storm.
- Do not drop the Network Camera.

## 1

## Package Contents

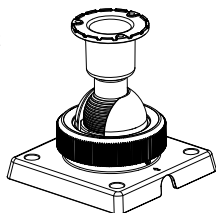
- IP8364-C



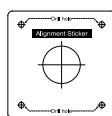
- Software CD



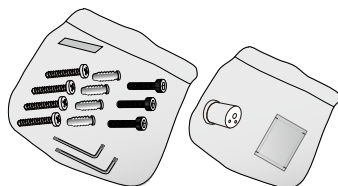
- Ball Swivel Mount Bracket



- Quick Installation Guide / Warranty Card / Alignment Sticker



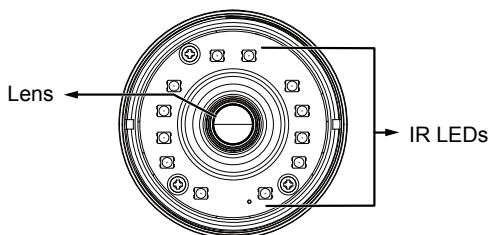
- L-type Hex Key Wrench / Dessicant Bag / Screws / Rubber seal



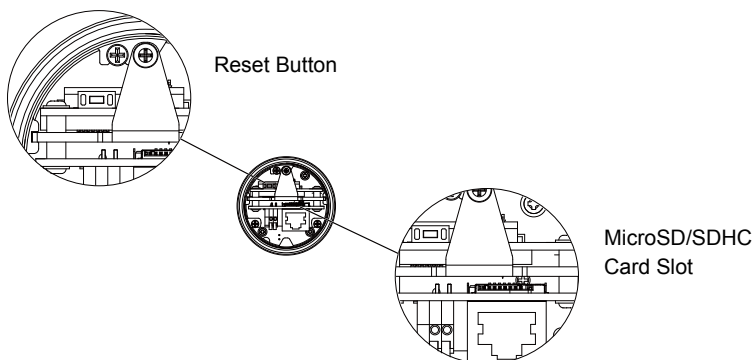
## 2

## Physical Description

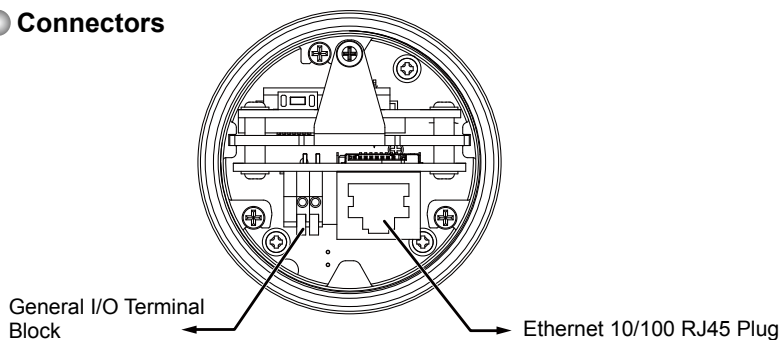
### Front Panel



### Rear Panel



### Connectors

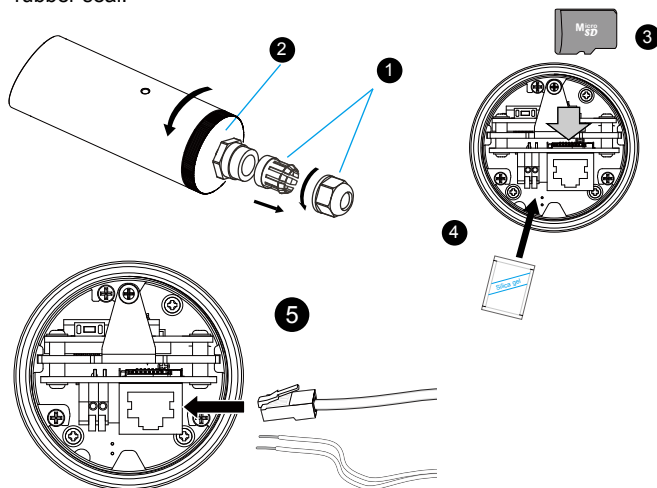


## 3

## Hardware Installation

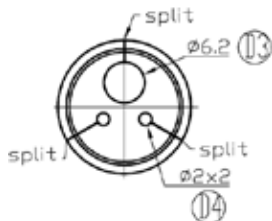
If you prefer installing a MicroSD card as onboard storage:

1. Loosen the waterproof connector, and then remove the rubber seal, and the waterproof connector.
2. Loosen and open the rear cover.
3. Install a MicroSD/SDHC card.
4. Tear down the aluminum foil vacuum bag and take out the dessicant bag. Attach the supplied dessicant bag to the inner side of the Network Camera. (Please replace the dessicant bag with a new one every time you open the rear cover.)
5. Connect an Ethernet cable and DI lines to the camera, and pass them through the rubber seal.

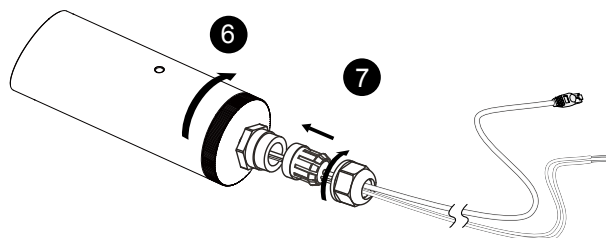
**IMPORTANT:**

The diameters of the cable holes on the rubber seal are shown on the right. Please properly install the waterproof cable gland and cables through it to obtain IP66 waterproof functionality.

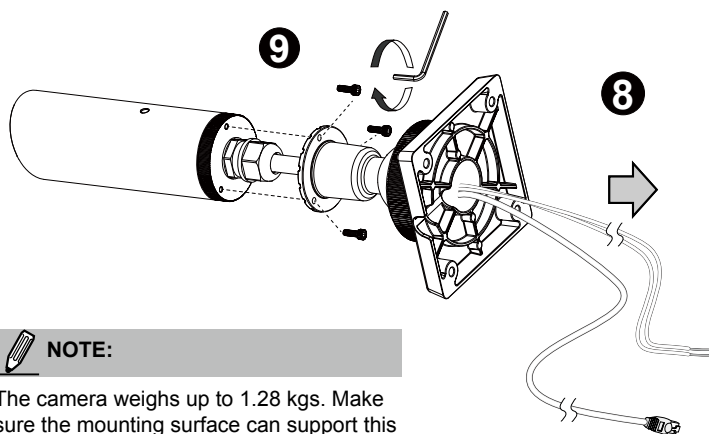
All units are in millimeters. The cable range for the Ethernet cable is 6.4 to 4.3mm, 1.6mm for DI lines.



6. Install and tighten the camera's rear cover.
7. Tighten the rubber seal, seal clamp, and cap nut of the waterproof connector.



8. Pass the cables through the center of the ball swivel mount bracket, one at a time.
9. Fasten the bracket to the camera using 3 hex socket screws.



**NOTE:**

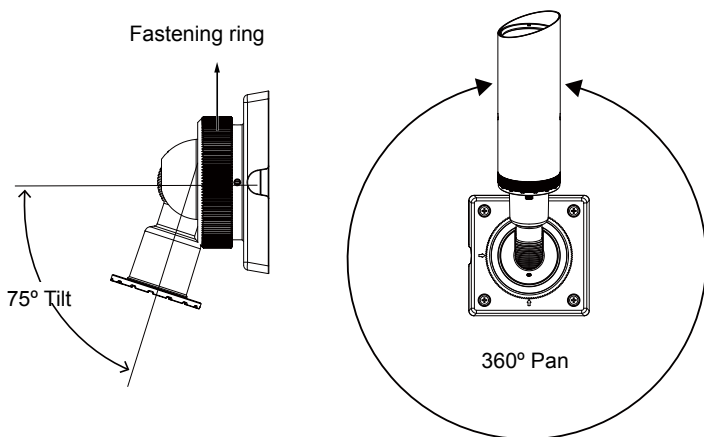
The camera weighs up to 1.28 kgs. Make sure the mounting surface can support this camera.



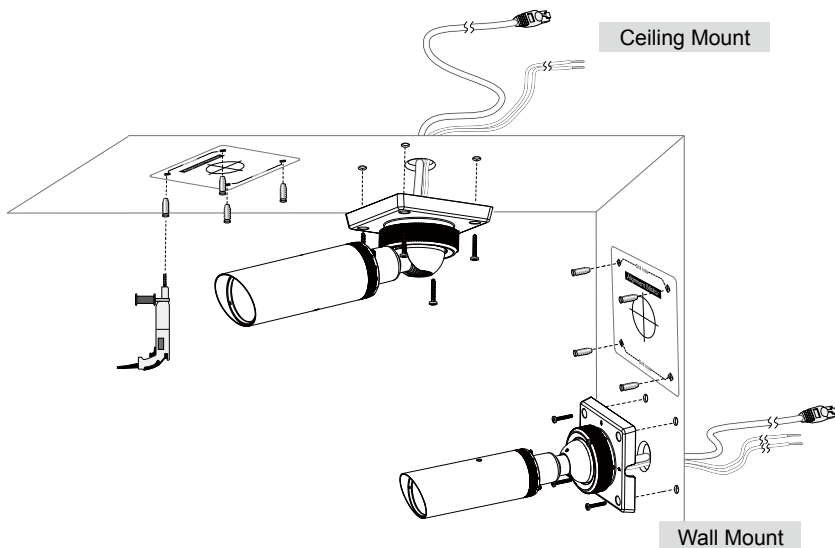
**IMPORTANT:**

Whenever you want to open the camera canister, loosen the waterproof cable gland before you loosen the rear cover. Otherwise, you can damage the cables attached to the inside of the camera.

10. Loosen the fastening ring on the mount bracket, and aim the camera at the area of your interest. When done, tighten the fastening ring.



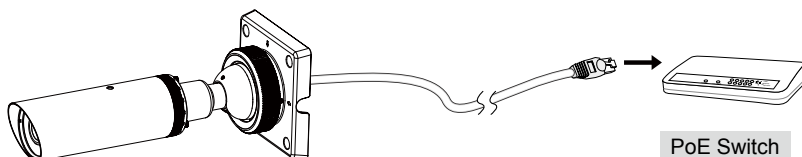
11. Secure the Network Camera to a wall or ceiling.



### Power over Ethernet (PoE)

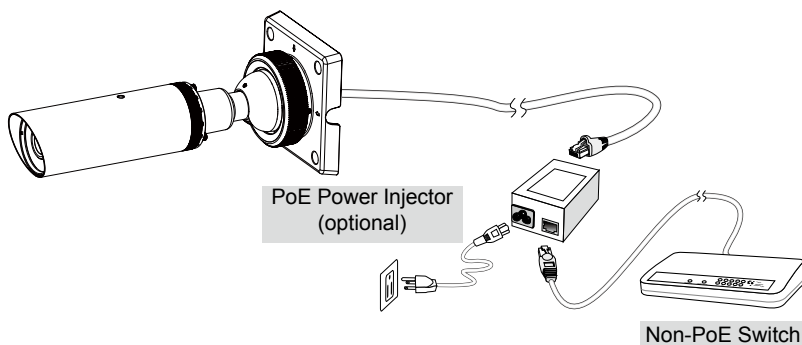
#### ● When using a PoE-enabled switch

The Network Camera is PoE-compliant, allowing transmission of power and data via single Ethernet cable. Follow the below illustration to connect the Network Camera to a PoE-enabled switch via Ethernet cable.



#### ● When using a non-PoE switch

Use a PoE power injector (optional) to connect between the Network Camera and a non-PoE switch.



## 5 Assigning an IP Address

1. Install the "Installation Wizard 2" from the Software Utility directory on the software CD.
2. The program will conduct an analysis of your network environment. After your network is analyzed, please click on the "Next" button to continue the program.
3. The program will search for VIVOTEK Video Receivers, Video Servers or Network Cameras on the same LAN.
4. After a brief search, the main installer window will pop up. Double-click on the MAC address that matches the one printed on the camera label or the S/N number on the package box label to open a browser management session with the Network Camera.

## 6 Ready to Use

1. A browser session with the Network Camera should prompt as shown below.
2. You should be able to see live video from your camera. You may also install the 32-channel recording software from the software CD in a deployment consisting of multiple cameras. For its installation details, please refer to its related documents.



For further setup, please refer to user's manual on the software CD.



P/N:625021000G Rev. 1.0

All specifications are subject to change without notice.  
Copyright © 2013 VIVOTEK INC. All rights reserved.



**VIVOTEK INC.**

6F, No.192, Lien-Cheng Rd., Chung-Ho, New Taipei City, 235, Taiwan, R.O.C.  
| T: +886-2-82455282 | F: +886-2-82455532 | E: sales@vivotek.com

**VIVOTEK USA, INC.**

2050 Ringwood Avenue, San Jose, CA 95131  
| T: 408-773-8686 | F: 408-773-8298 | E: salesusa@vivotek.com