

Quick Installation Guide

English | 繁體中文 | 簡體中文 | 日本語 | Français | Español | Deutsch | Português | Italiano | Türkçe | Polski | Русский | Český | Svenska | العربية

NR7401 Network Video Recorder

9-channel Monitoring and Recording Simultaneously





Warning Before Install

- **Power off the Network Video Recorder as soon as it is found smoking or smelt unusual.**
- **Keep the Network Video Recorder away from the water. If the Network Camera is wet, power off immediately.**

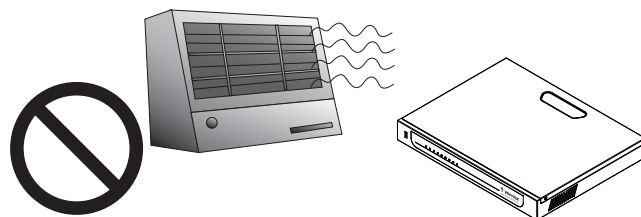


Contact your distributor when such cases happen.

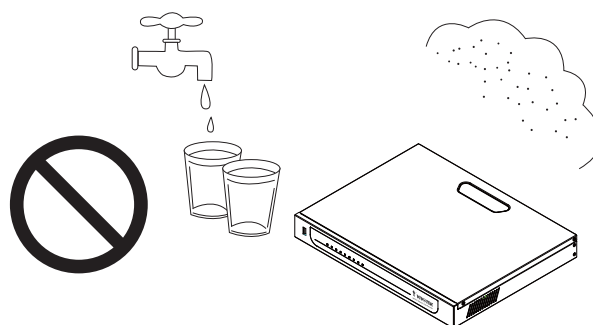
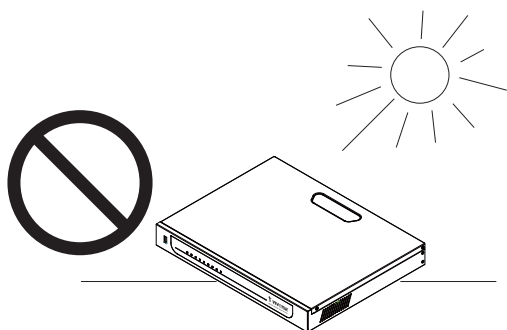


Contact your distributor when such cases happen.

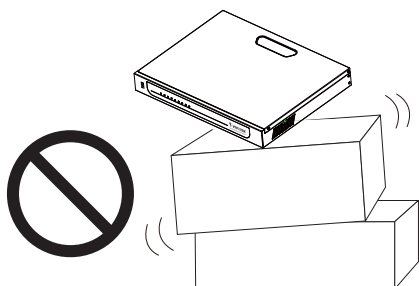
- **Do not place the Network Video Recorder around the heat sources, such as television or oven.**
- **Refer to your user's manual for the operating temperature.**



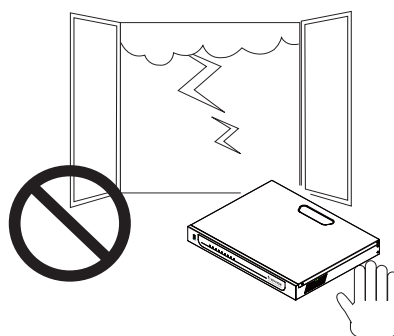
- **Keep the Network Video Recorder away from direct sunlight.**
- **Do not place the Network Video Recorder in high humid environments.**



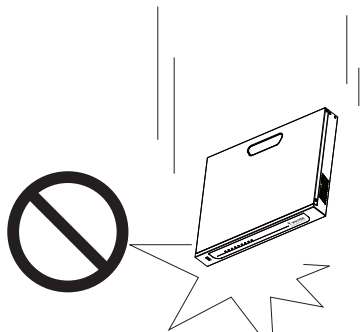
● Do not place the Network Video Recorder on unsteady surfaces.



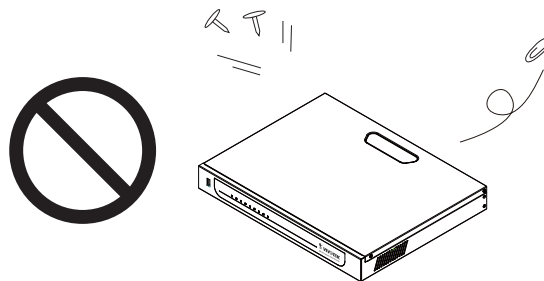
● Do not touch the Network Video Recorder when it's lightening.



● Do not drop the Network Video Recorder.

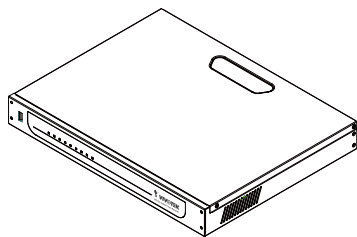


● Do not insert any object into the Network Video Recorder, such as needles.

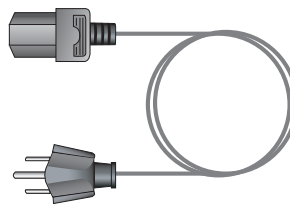


1 Package Contents

● NR7401



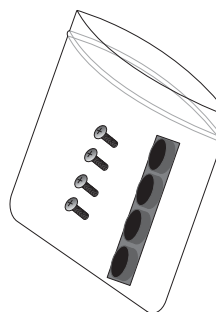
● Power cord



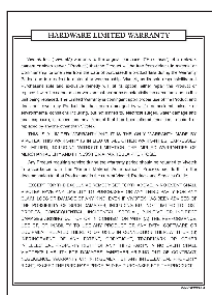
● Software CD



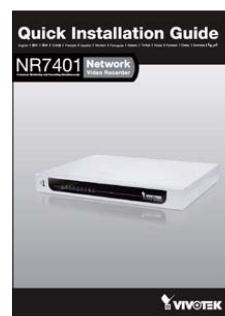
● 3M Bumpon / screws



● Warranty card



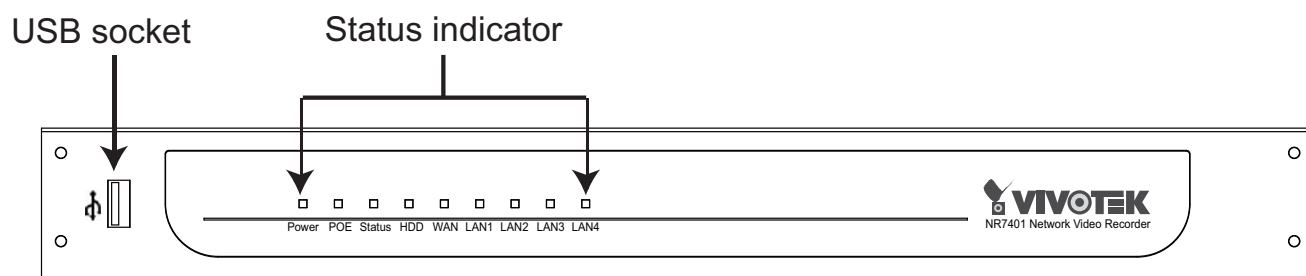
● Quick installation guide



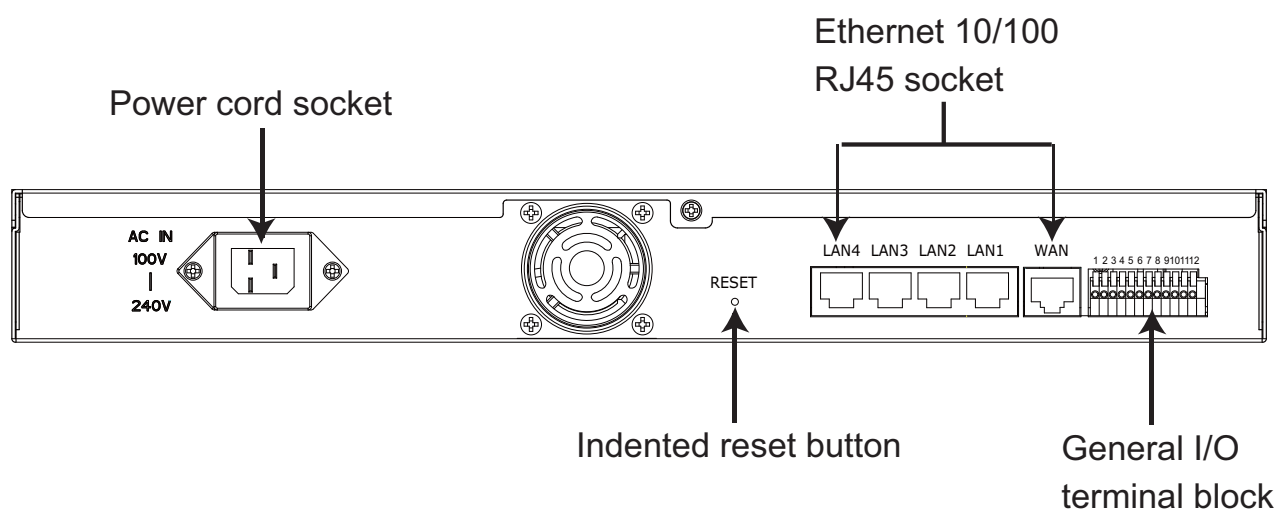
2

Physical Description

Front Panel



Rear Panel

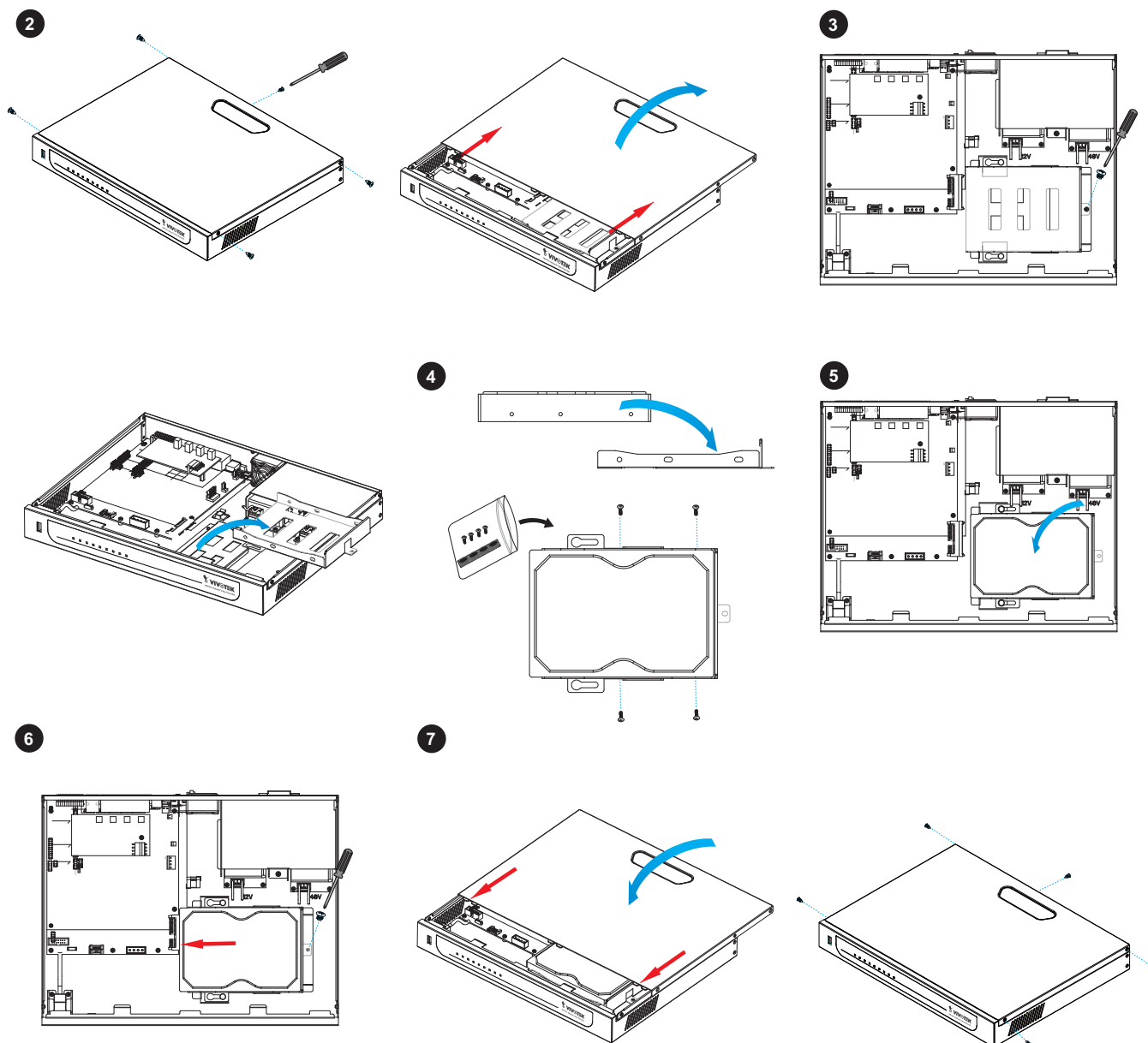


3 Hardware Installation

● Install the hard disk

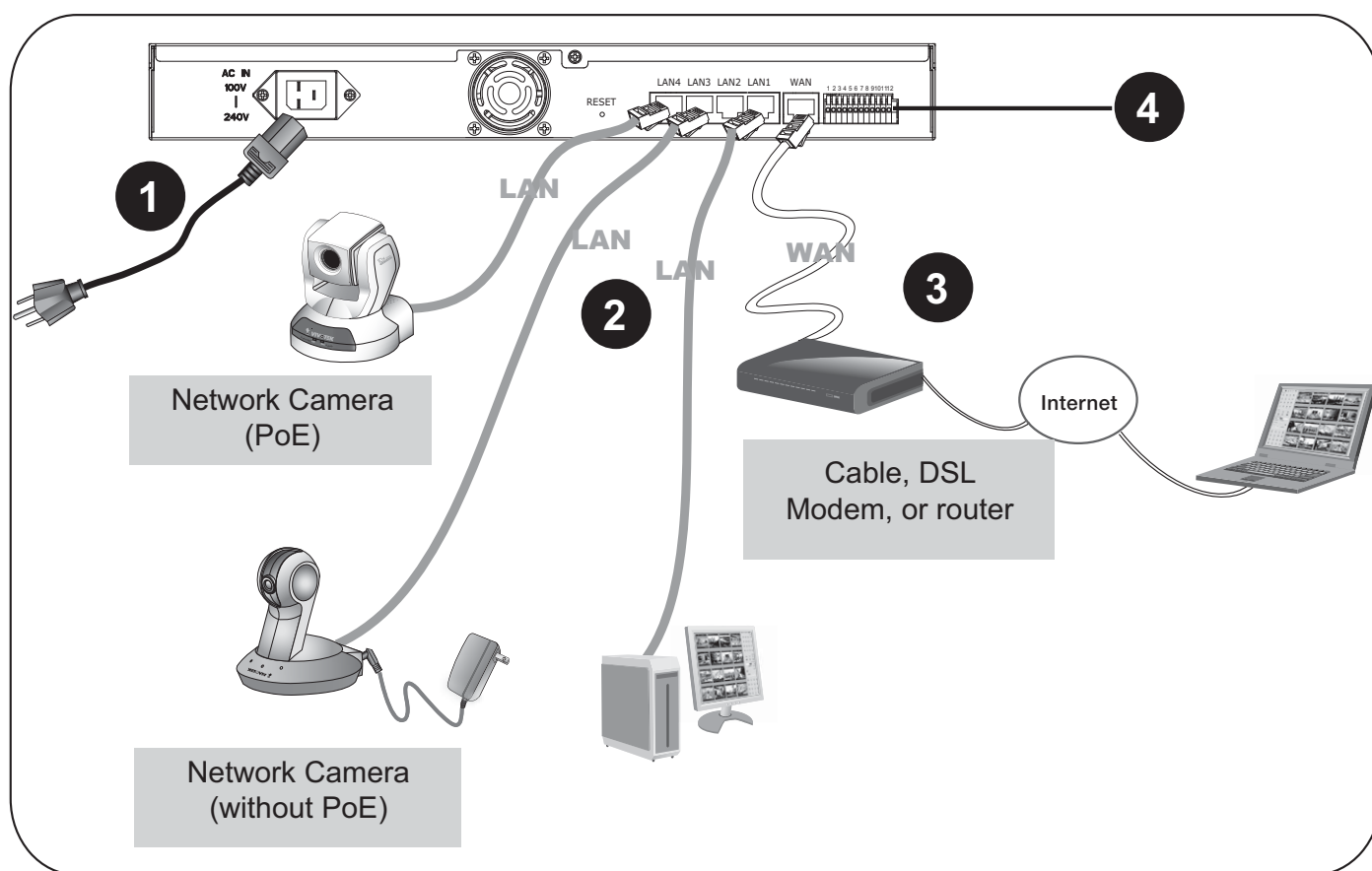
Before using the Network Video Recorder, please prepare a SATA hard disk to store the recorded video.

1. Make sure the power is off.
2. Use a screwdriver to loose five screws, and then slide to remove the upper cover.
3. Loose the screw and take out the hard disk bracket.
4. Put your hard disk into the bracket, and secure it with the supplied four screws.
5. Place your hard disk into the Network Video Recorder.
6. Slide the hard disk as the picture shows, and then secure it with the original screw.
7. Attach the upper cover, and then secure it with the original five screws.



4 Network Deployment

1. Connect the supplied power cable from the Network Video Recorder to a power outlet.
2. Connect NR7401 to Network Cameras and computer in LAN via LAN sockets. Because NR7401 supports PoE, if the Network Camera is PoE-compliant, it allows transmission of power and data via single Ethernet cable.
3. If you want to access NR7401 over the Internet, connect NR7401 to the Internet via WAN socket.
4. If you have external devices such as sensors and alarms, make connections from general I/O terminal block.



4

- 1: Power
- 2: Relay output COM
- 3: Relay output N.O.
- 4: Digital Input 1
- 5: Digital Input 1 Ground
- 6: Digital Input 2
- 7: Digital Input 2 Ground
- 8: Digital Input 3
- 9: Digital Input 3 Ground
- 10: Digital Input 4
- 11: Digital Input 4 Ground
- 12: Ground

5 Assigning IP Address

1. Set up NR7401 in LAN. When in LAN, the default IP address for NR7401 is 192.168.100.1. Directly enter the IP address in the address bar of the web browser. The webpage of NR7401 will be displayed for you to configure the settings.
2. If you want to access NR7401 over the Internet, please assign a WAN IP address in the configuration page. There are three ways to get WAN IP address: **DHCP (Dynamic IP)**, **Static IP address**, and **PPPoE (DSL)**.

If your network environment is **DHCP**, you can use VIVOTEK Installation Wizard 2 (IW2) to get an IP address easily.

- (1) Install the "Installation Wizard 2" under the Software Utility directory from software CD.
- (2) The program will conduct analyses on your network environment. After your network is analyzed, please click on the "Next" button to continue the program.

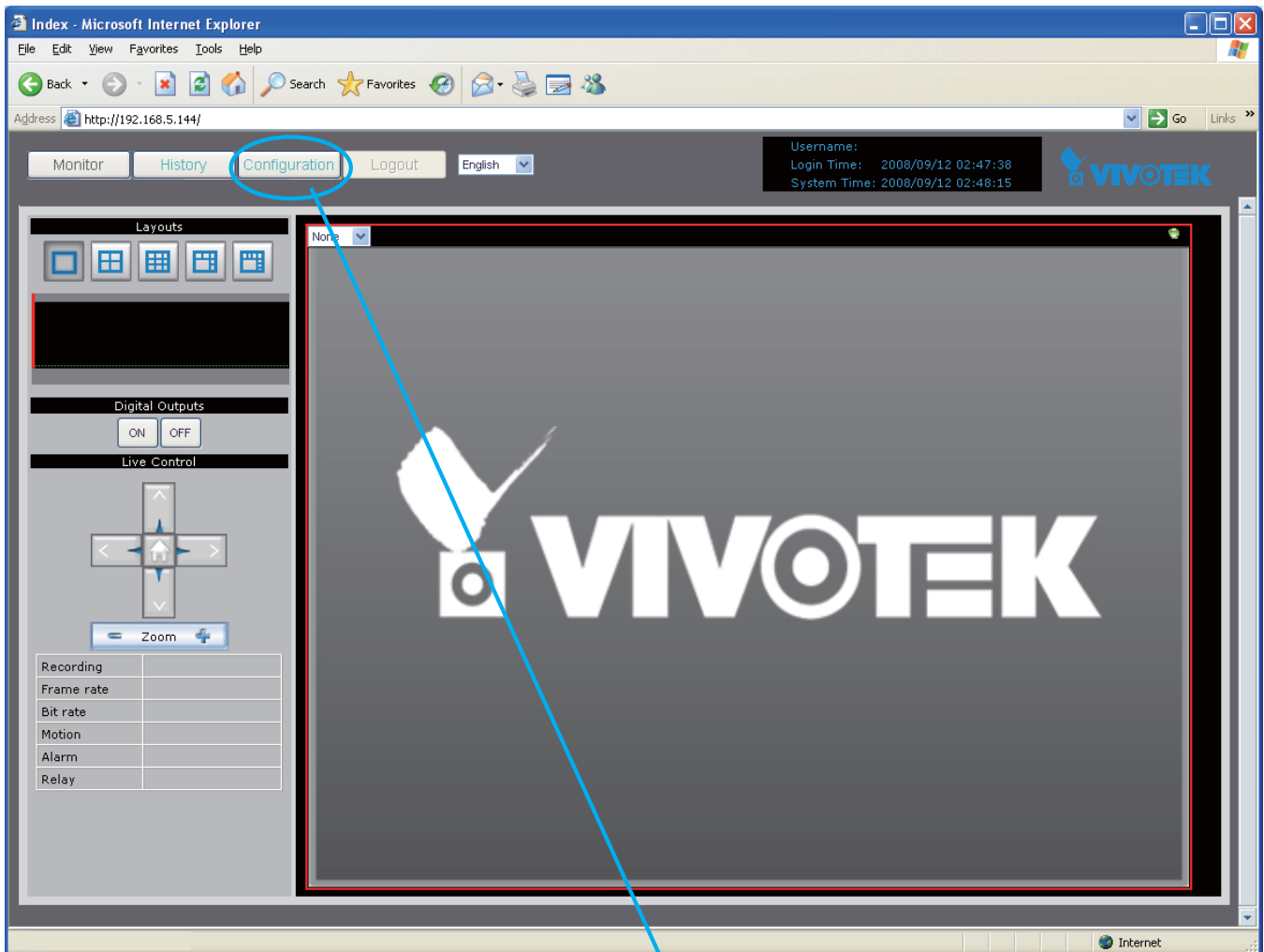


- (3) The program will search the VIVOTEK Network Devices in the same LAN.
- (4) After searching, the main installer window will pop up. Click on the MAC that matches the one labeled on the bottom of your device to connect the Internet Explorer to NR7401.



3. Use the WAN IP address to access NR7401 from the Internet.

Following is the Homepage of NR7401.



Configuration page

Note

If you want to record live video and playback the recorded video, you have to add devices to NR7401 in the Configuration page. For further setup, please refer to user's manual on the software CD.

