



## **Network Camera with Pan/Tilt PT3112 、 PT3122**

---

### **Quick Installation Guide**

This guide describes the basic functions of PT3112 、 PT3122.

All detailed information is described in the user's manual.



## Warning Before Install

- Power off the Network Camera as soon as it is found smoking or smelt unusual.



Contact your distributor when such cases happen.

- Keep the Network Camera away from the water. If the Network Camera is wet, power off immediately.

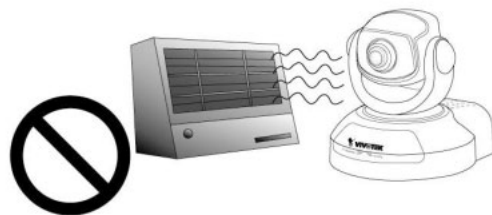


Contact your distributor when such cases happen.

- Do not place the Network Camera around the heat sources, such as television or oven.



- Refer to your user's manual for the operating temperature.



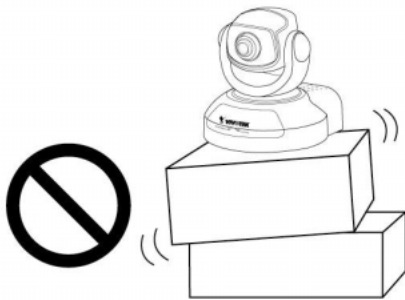
- Keep the Network Camera away from the direct sunlight.



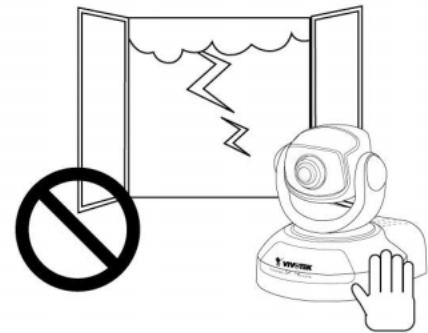
- Do not place the Network Camera in high humid environments.



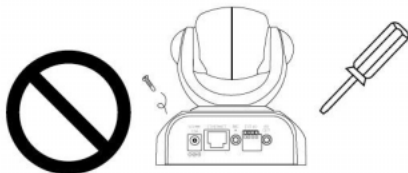
- Do not place the Network Camera on unsteady surfaces.



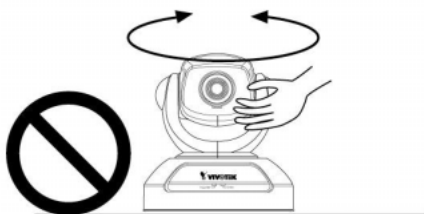
- Do not touch the Network Camera when it's lightening.



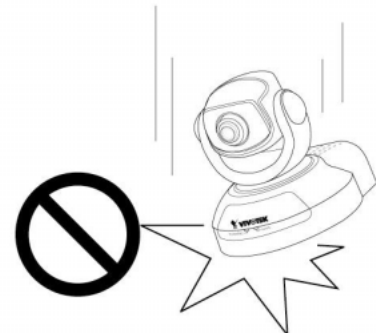
- Do not disassemble the Network Camera.



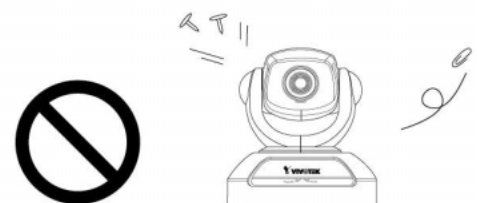
- Do not manually pan and tilt the Network Camera when the power is on.



- Do not drop the Network Camera.



- Do not insert any object into the Network Camera, such as needles.



# 1 Check package contents

● PT3112 、 PT3122



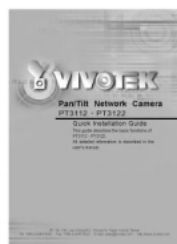
● Camera stand



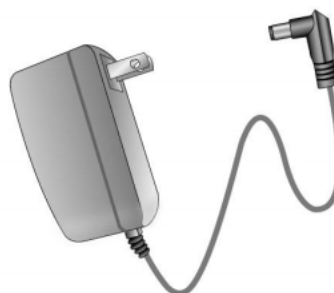
● Software CD



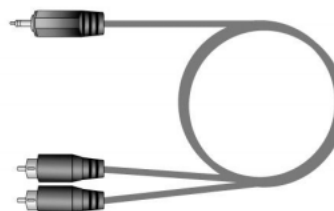
● Quick installation guide



● Power adapter



● A/V cable



● Remote controller

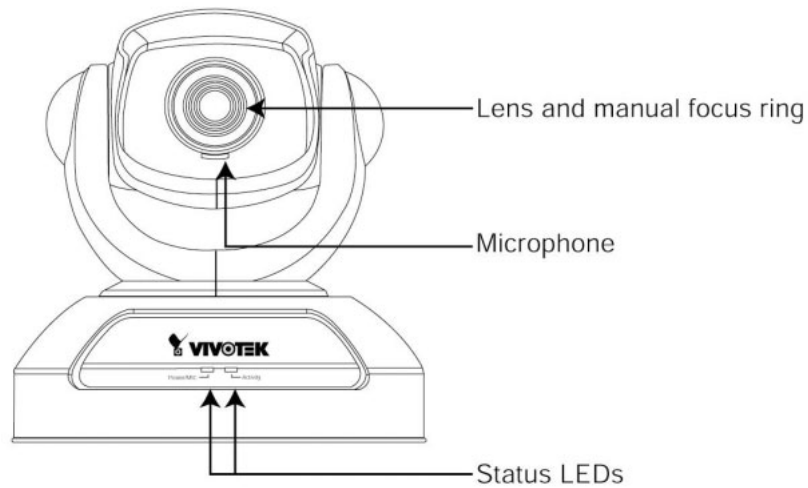


● Warranty card

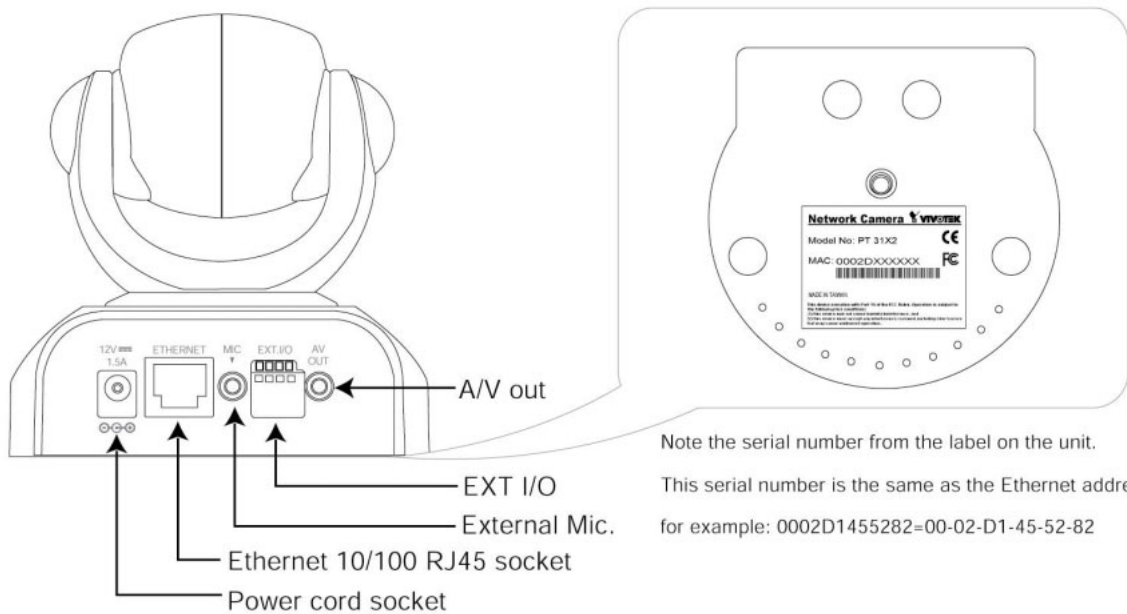


## 2 Physical description

### ● Front panel

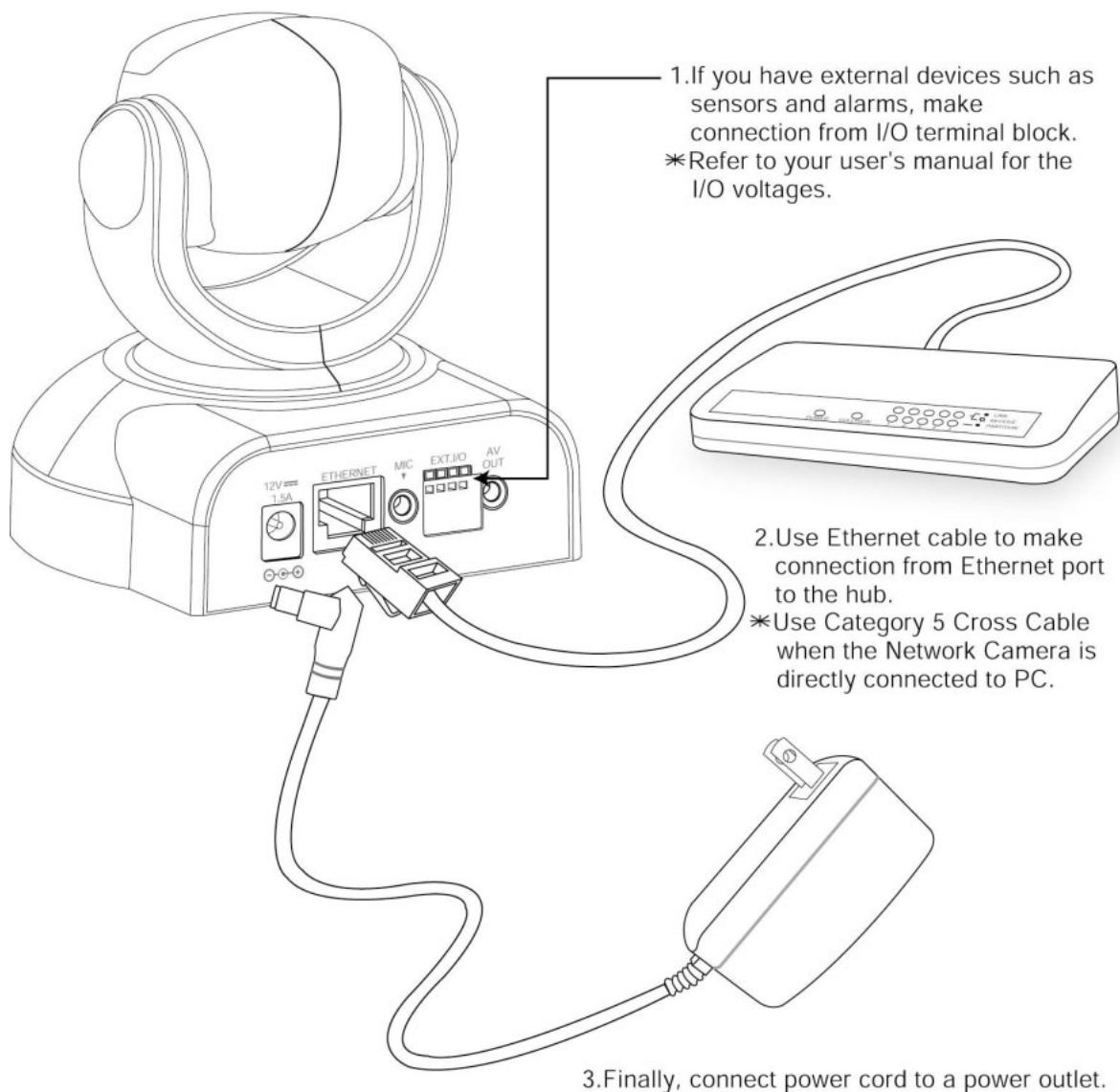


### ● Rear panel



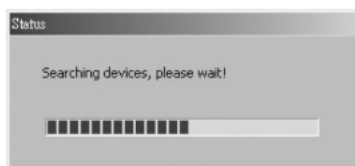
### 3

## Install your Network Camera in Ethernet network



## 4 Assign IP address

- 1.Run the "Installation Wizard" under "Utility" directory on the software CD.
- 2.The program will search Vivotek Video Servers or Network Cameras on the same LAN.

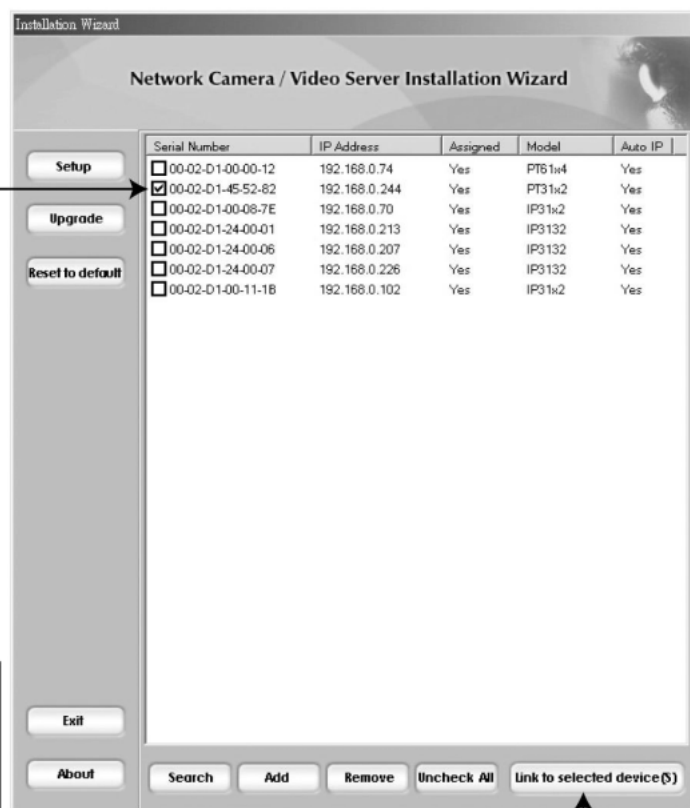


- 3.After searching, the main installer window will pop up. Click on the serial number that matches the one you just note from

2 Physical description

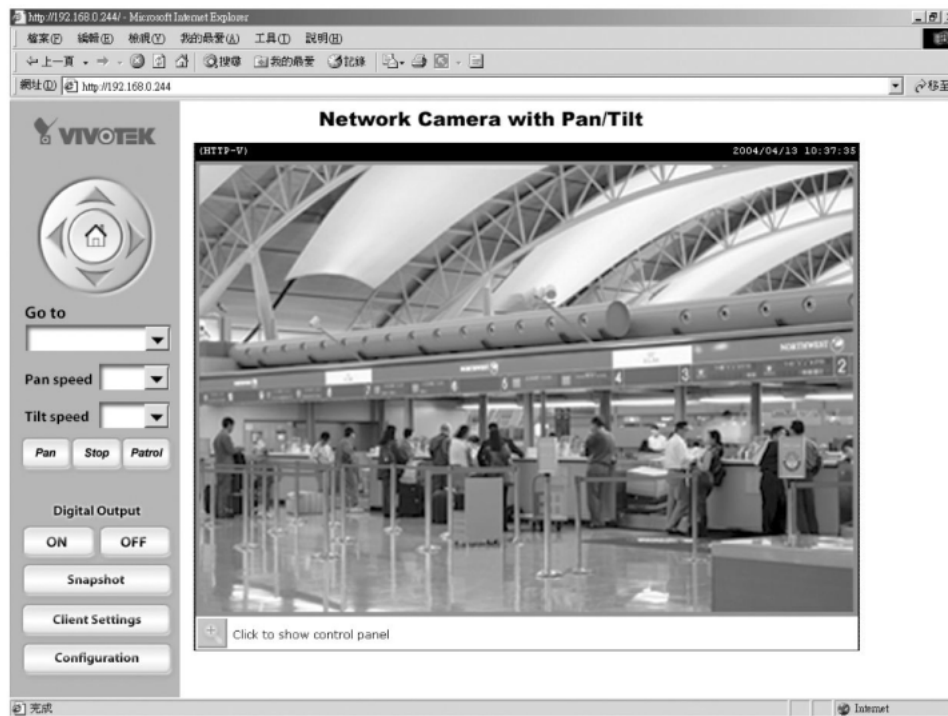
- 4.Click "Link to selected device" to connect the Internet Explorer to the Network Camera.

✱ If there is no DHCP server on the LAN, please refer to the user's manual for the methods of assigning an IP address.



## 5

## The Internet Explorer Connects to the Network Camera



For detailed information on further configuration, see user's manual on the software CD.