



VIVOTEK

Network Camera with Pan/Tilt

PT3113 、 PT3123

PT3114 、 PT3124

Quick Installation Guide

This guide describes the basic functions of
PT3113 、 PT3123 、 PT3114 、 PT3124.

All detailed information is described in the
user's manual.

6F., No. 192, Lien-Cheng Rd., Chung-Ho, Taipei County, Taiwan

Tel: +886-2-8245-5282 Fax: +886-2-8245-5532 E-mail: sales@vivotek.com [Http://www.vivotek.com](http://www.vivotek.com)



Warning Before Install

- Power off the Network Camera as soon as it is found smoking or smelt unusual.



Contact your distributor when such cases happen.

- Keep the Network Camera away from the water. If the Network Camera is wet, power off immediately.



Contact your distributor when such cases happen.

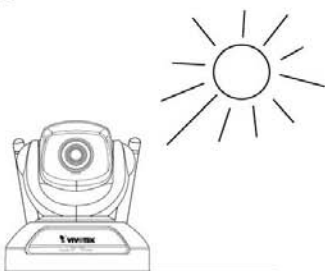
- Do not place the Network Camera around the heat sources, such as television or oven.



- Refer to your user's manual for the operating temperature.



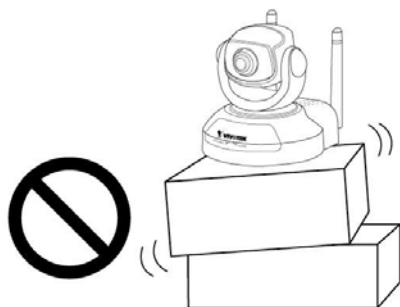
- Keep the Network Camera away from the direct sunlight.



- Do not place the Network Camera in high humid environments.



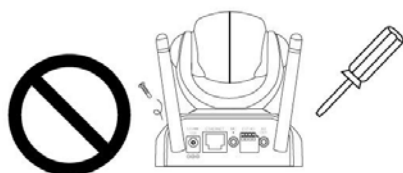
- Do not place the Network Camera on unsteady surfaces.



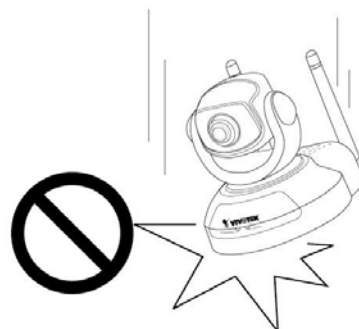
- Do not touch the Network Camera when it's lightening.



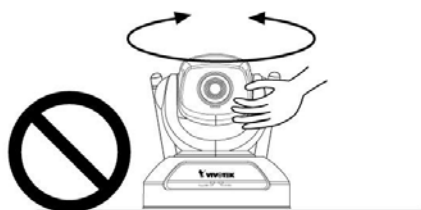
- Do not disassemble the Network Camera.



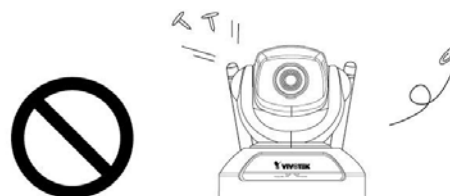
- Do not drop the Network Camera.



- Do not manually pan and tilt the Network Camera when the power is on.



- Do not insert any object into the Network Camera, such as needles.



1 Check package contents

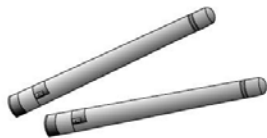
● PT3113、PT3123
PT3114、PT3124



● Camera stand



● Antennas



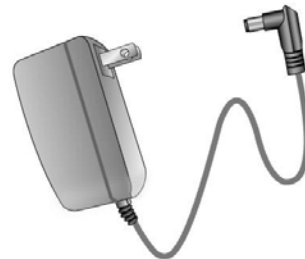
● Remote controller



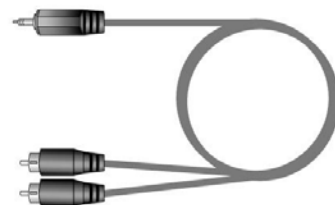
● Warranty card



● Power adapter



● A/V cable



● Software CD

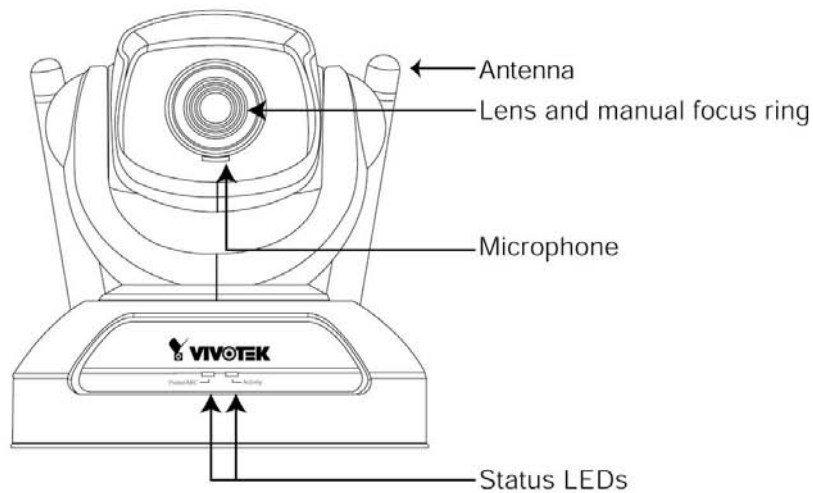


● Quick installation guide

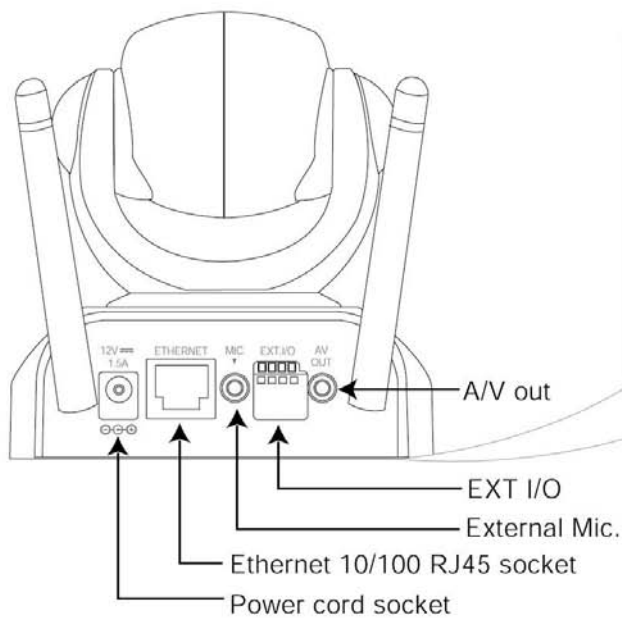


2 Physical description

● Front panel



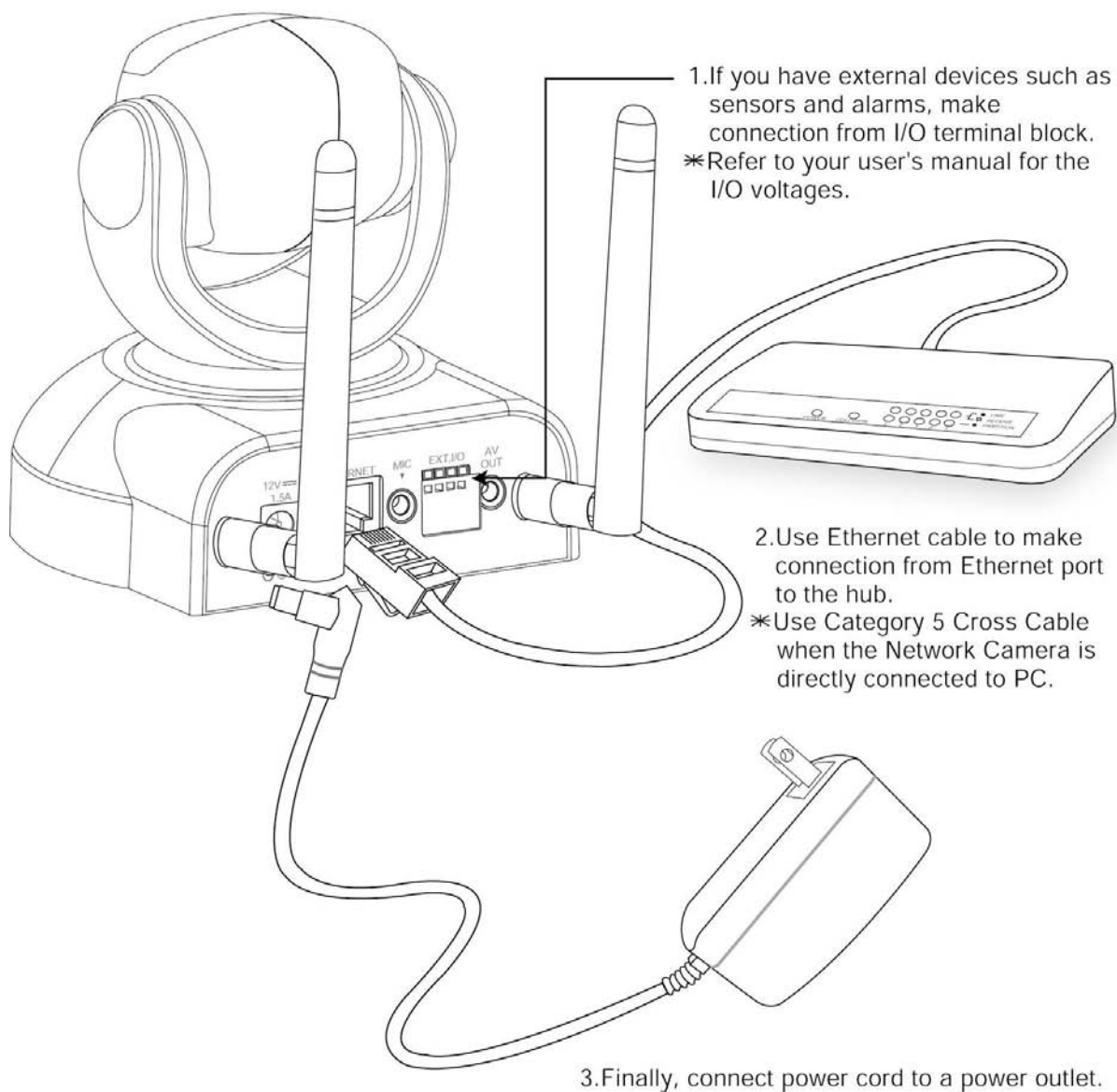
● Rear panel



Note the serial number from the label on the unit.
This serial number is the same as the MAC address,
for example: 0002D1455282=00-02-D1-45-52-82

3

Install your Network Camera in Ethernet network

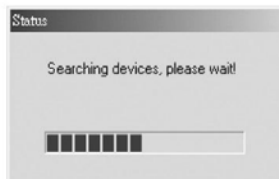


4

Assign IP address

1. Run the Installer under the Utility directory from software CD.

2. The program will search the cameras on the same LAN.



3. After searching, the main installer window will pop up. Click on serial number that matches the one you just note from

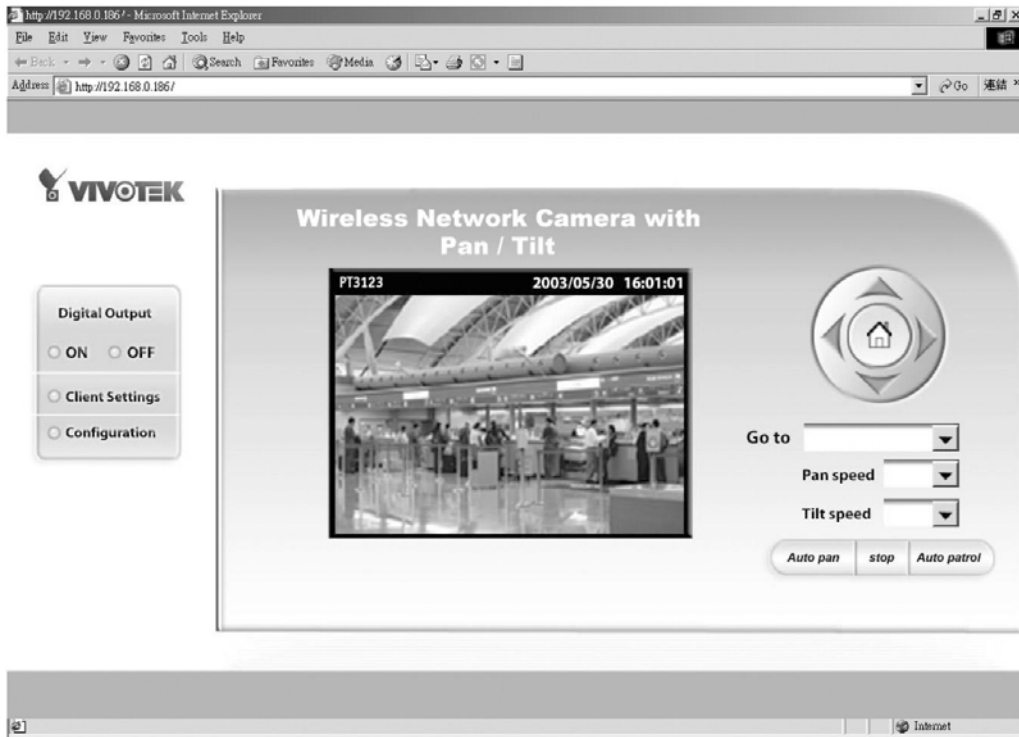
2 Physical description

4. Click "Link to selected device" to connect the Internet Explorer to the Network Camera.



5

The Internet Explorer Connects to the Network Camera



For setup wireless mode and further configuration, please check user's manual on the software CD.