

2.6x Pan-focus Zoom Progressive Scan CCD
NETWORK CAMERA
Quick Installation Guide

English | 繁中 | 簡中 | 日本語 | Français | Español | Deutsch | Português | Italiano | Türkçe | Polski | Русский



PZ7151/PZ7152

This guide describes the basic functions of PZ7151/PZ7152.
All detailed information is described in the user's manual.



Warning Before Install

- Power off the Network Camera as soon as it is found smoking or smelt unusual.

- Keep the Network Camera away from water. If the Network Camera is wet, power off immediately.



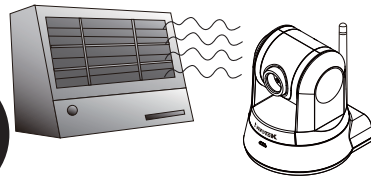
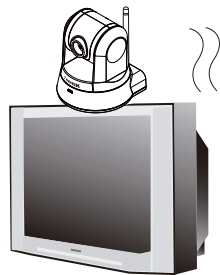
Contact your distributor when such cases happen.



Contact your distributor when such cases happen.

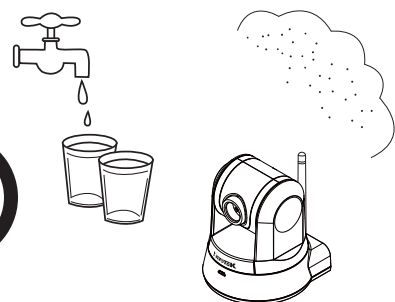
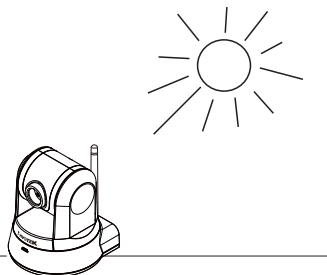
- Do not place the Network Camera around the heat sources, such as television or oven.

- Refer to your user's manual for the operating temperature.

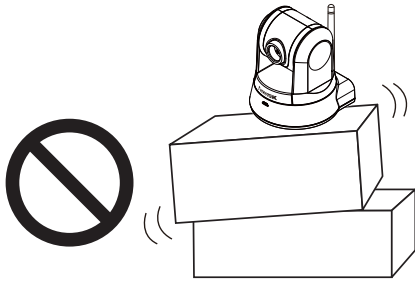


- Keep the Network Camera away from direct sunlight.

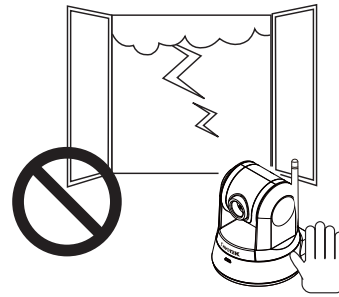
- Do not place the Network Camera in high humid environments.



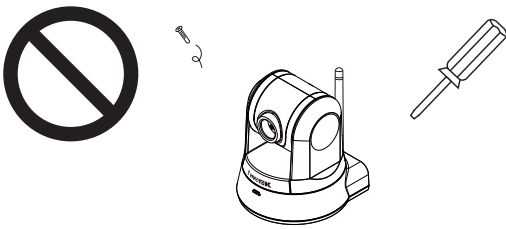
● Do not place the Network Camera on unsteady surfaces.



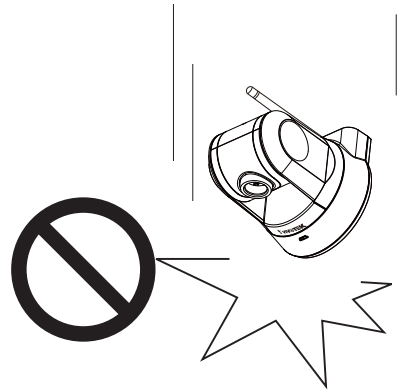
● Do not touch the Network Camera when it's lightning.



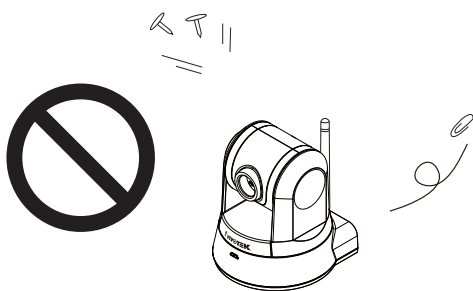
● Do not disassemble the Network Camera.



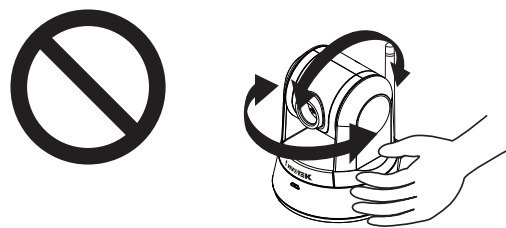
● Do not drop the Network Camera.



● Do not insert any object into the Network Camera, such as needles.

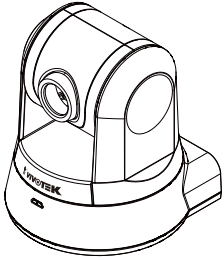


● Do not manually pan and tilt the Network Camera when the power is on.

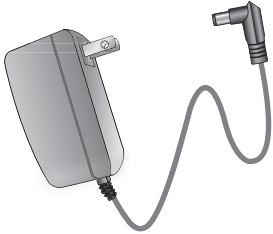


1 Package Contents

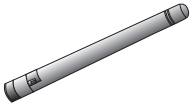
● PZ7151 / PZ7152



● Power adapter



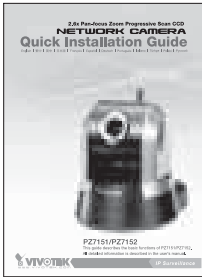
● Antenna (PZ7152 only)



● Screws



● Quick installation guide



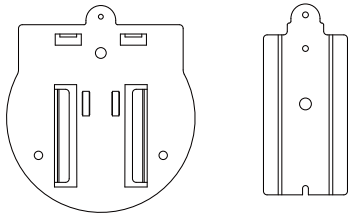
● Software CD



● Warranty card



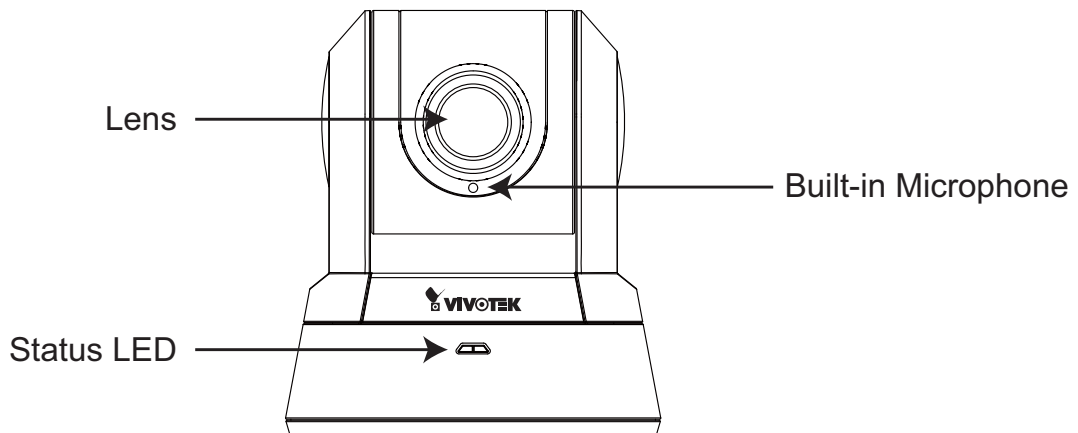
● Ceiling mount brackets



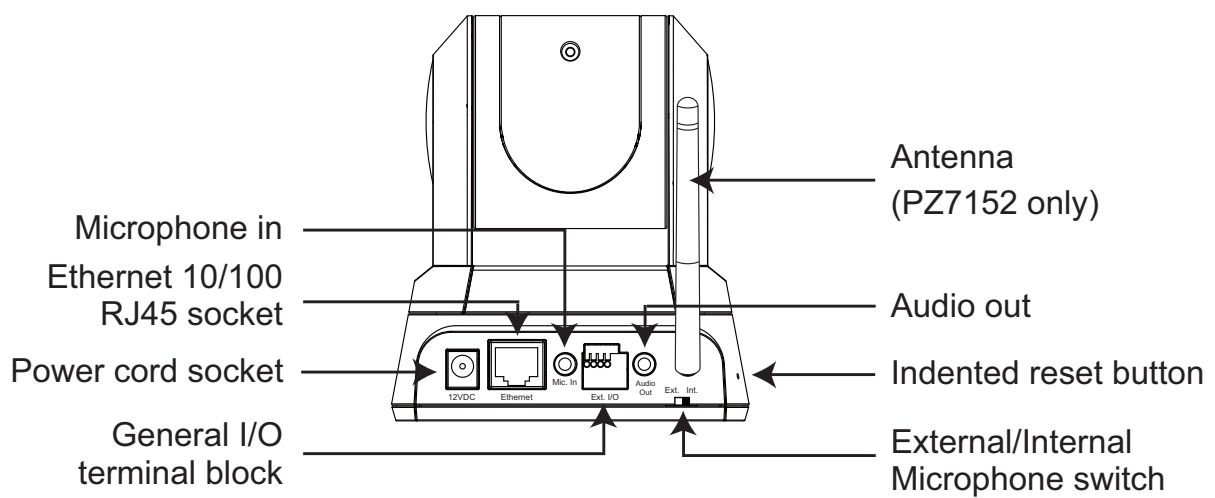
2

Physical Description

● Front panel



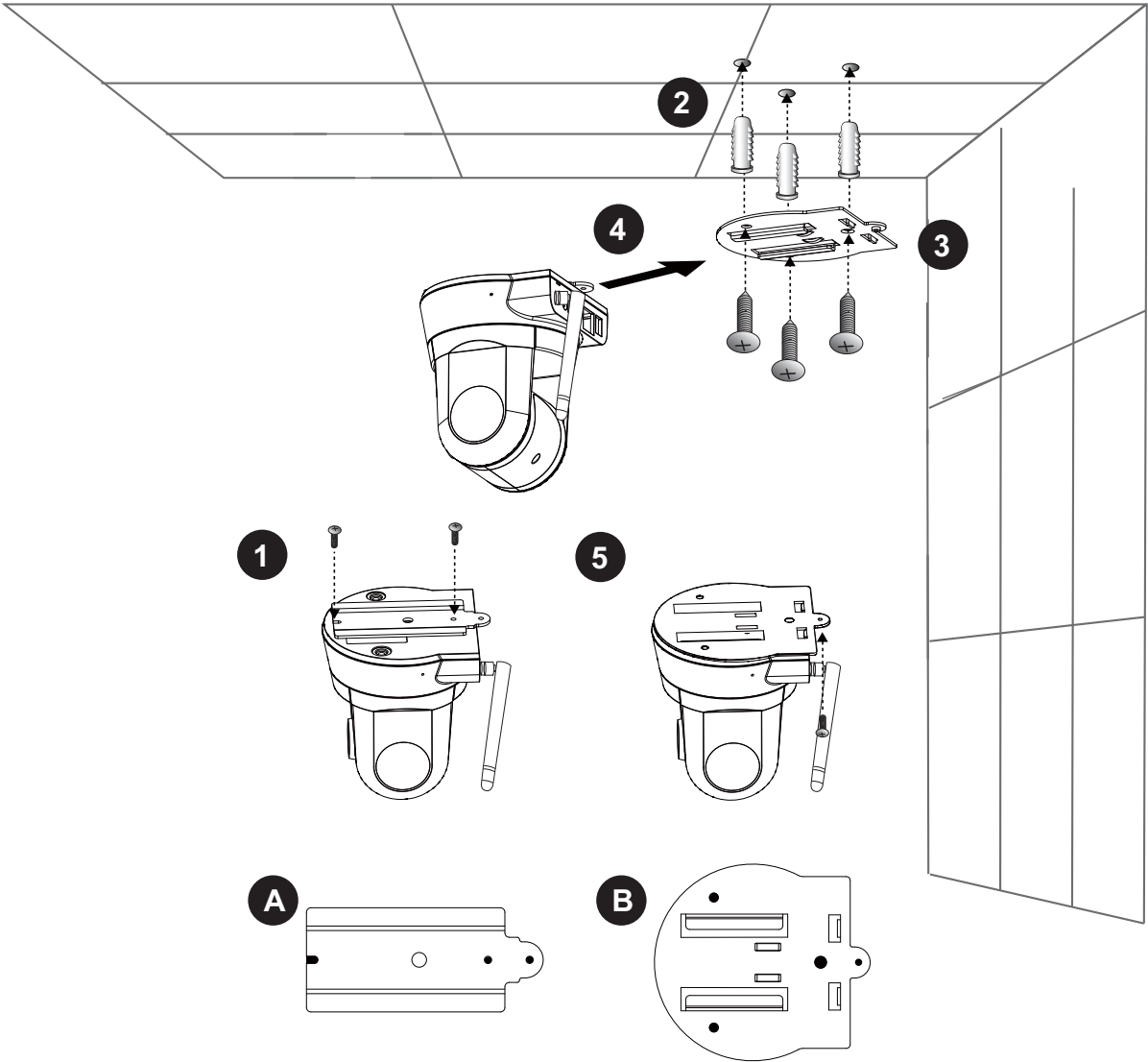
● Back panel



3 Hardware Installation

● Mounting the Network Camera

1. Attach ceiling mount bracket A to the Network Camera and secure it with two small screws.
2. Drill three pilot holes into the ceiling; hammer the plastic anchors into the holes.
3. Fasten ceiling mount bracket B to the ceiling with three screws.
4. Slide the Network Camera into ceiling mount bracket B.
5. Secure ceiling mount bracket A and B with a small screw.

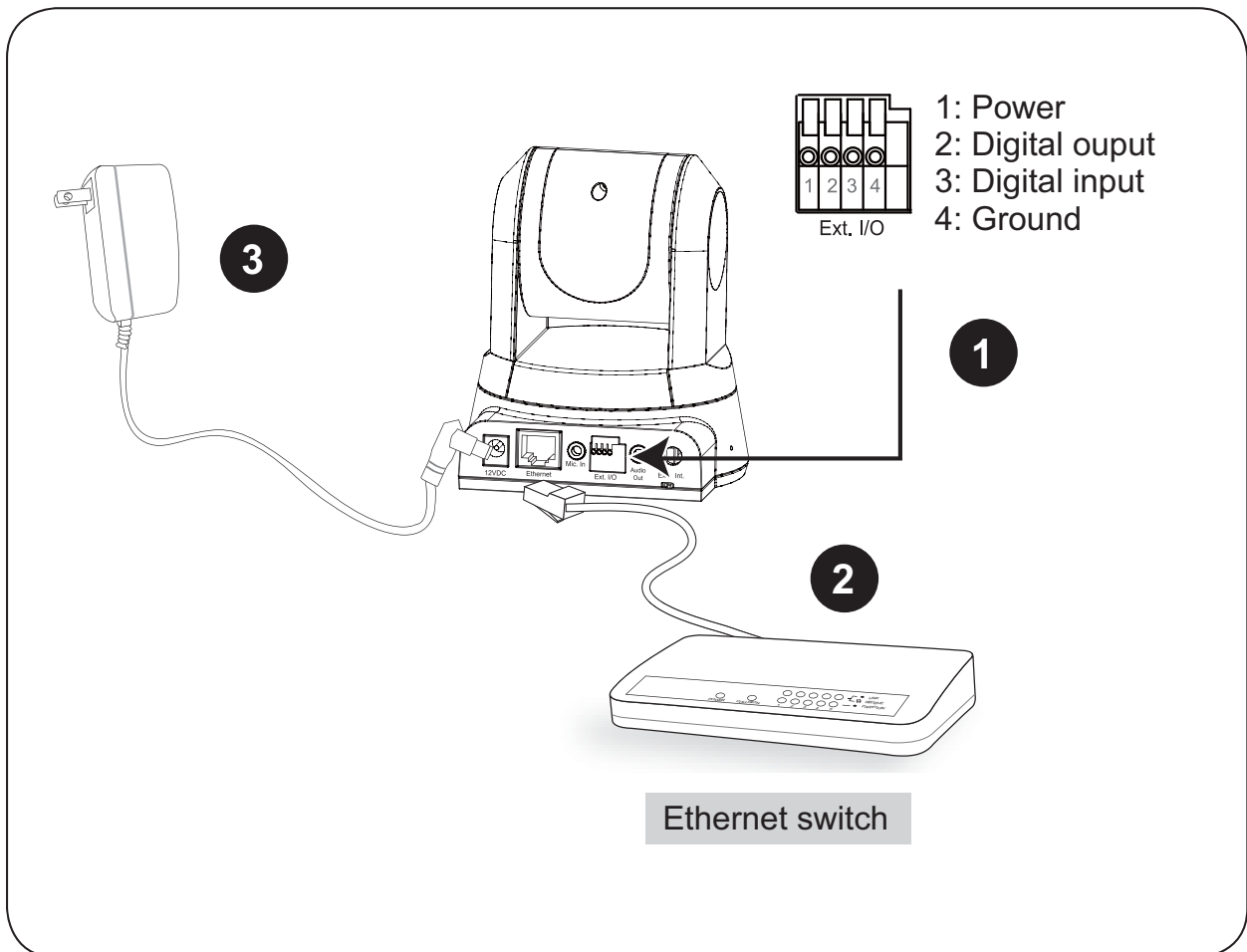


4

Network Deployment

General Connection (without PoE)

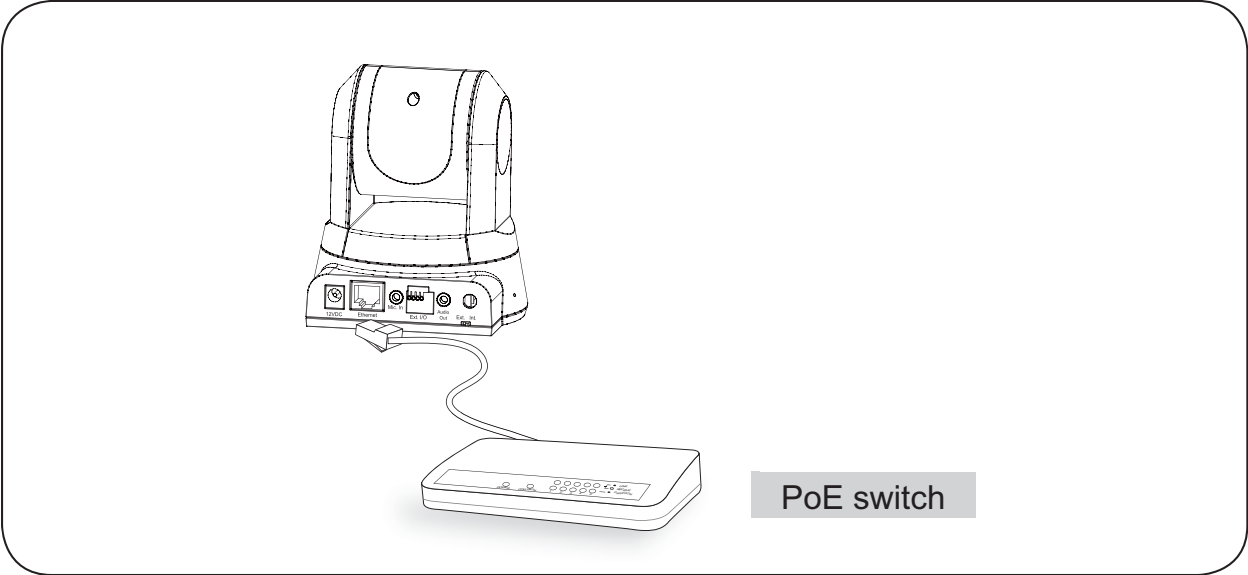
1. If you have external devices such as sensors and alarms, make connection from general I/O terminal block.
2. Connect the camera to a switch via Ethernet cable.
3. Connect the supplied power cable from the Network Camera to a power outlet.



Power over Ethernet (PoE) (PZ7151 only)

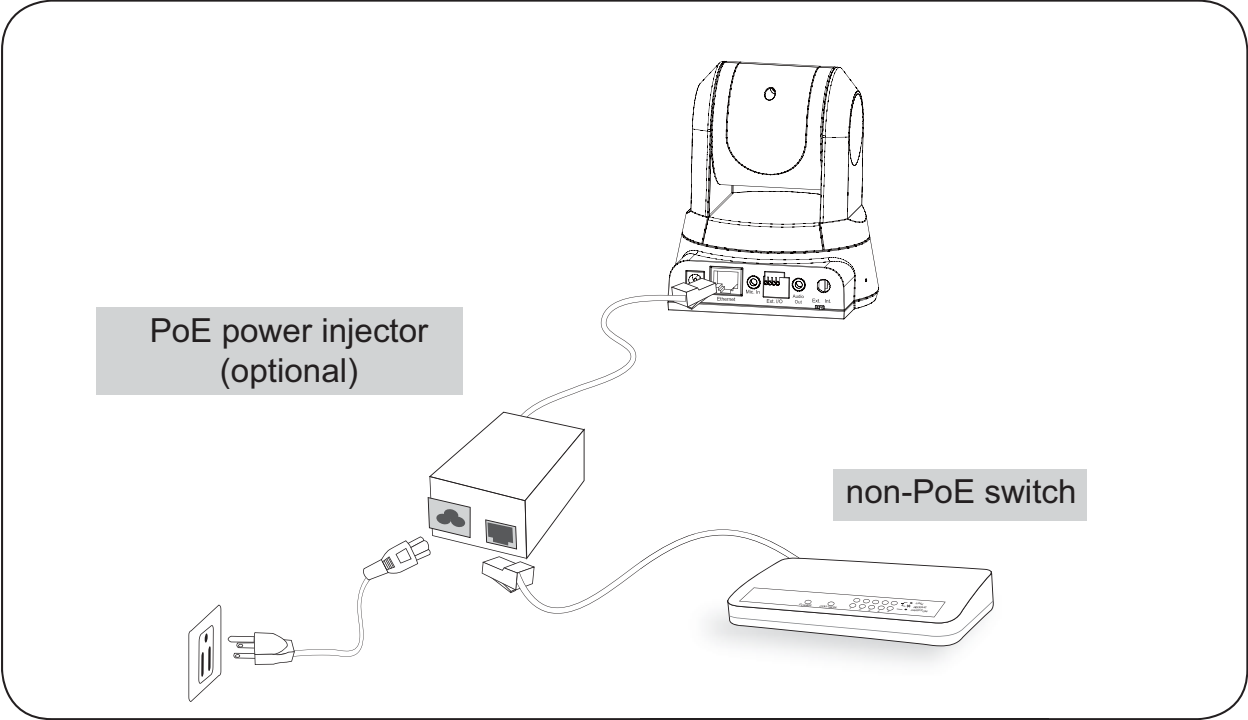
● When using a PoE-enabled switch

The Network Camera is PoE-compliant, allowing transmission of power and data via single Ethernet cable. See the following illustration to connect the Network Camera to a PoE-enabled switch via Ethernet cable.



● When using a non-PoE switch

Use a PoE power injector (optional) to connect between the Network Camera and a non-PoE switch.



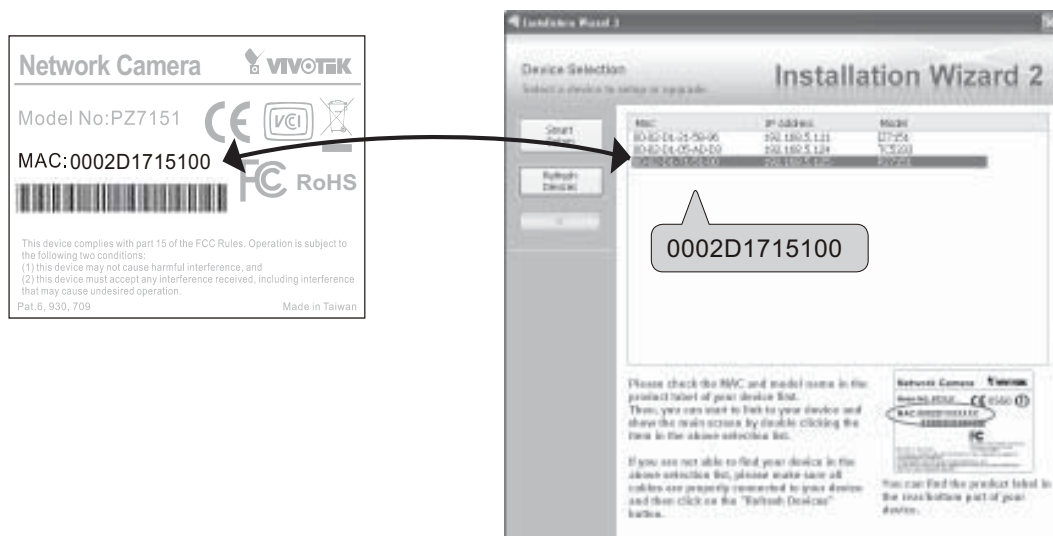
5

Assigning IP Address

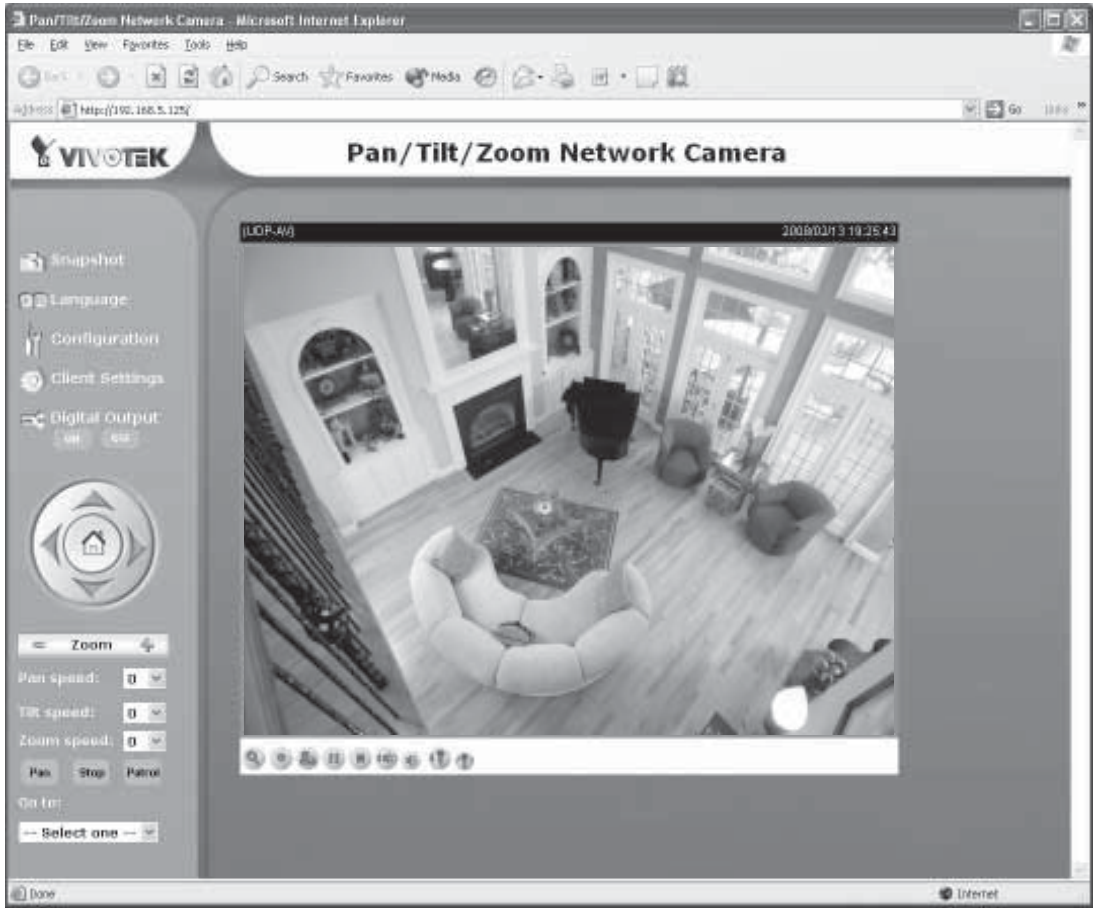
1. Install the "Installation Wizard 2" under the Software Utility directory from software CD.
2. The program will conduct analyses on your network environment. After your network is analyzed, please click on the "Next" button to continue the program.



3. The program will search the VIVOTEK Video Receivers, Video Servers or Network Cameras on the same LAN.
4. After searching, the main installer window will pop up. Click on the MAC that matches the one labeled on the bottom of your device to connect the Internet Explorer to the Network Camera.



6 Retrieving Images



For further setup, please refer to user's manual on the software CD.

7

Configure the Wireless Connection (PZ7152 only)

1. Check the SSID currently set on your wireless access point (AP).
2. Go to PZ7152's Configuration > Wireless LAN.

3. Type in the SSID consistent with the setting on your AP.

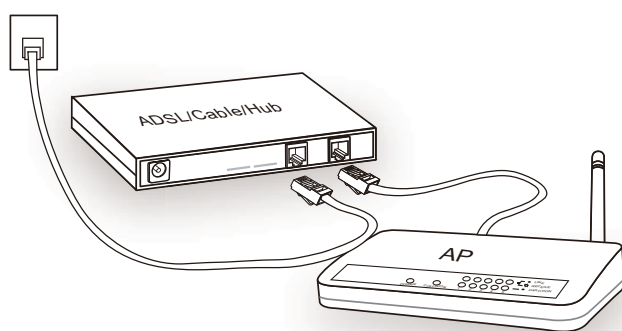
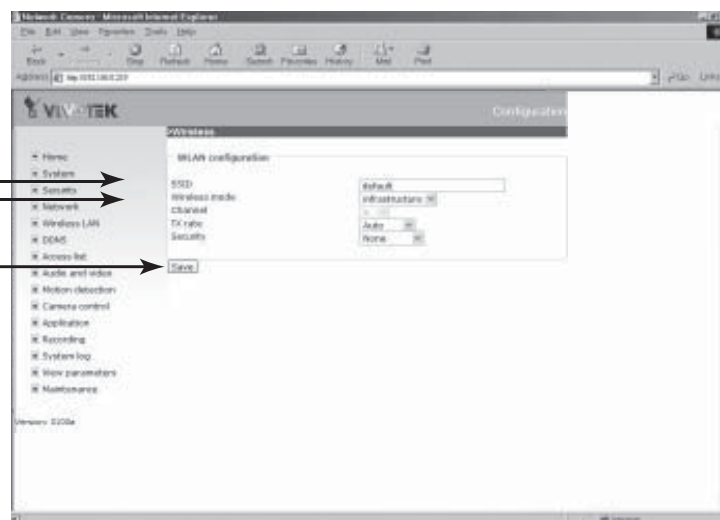
4. Select the Wireless mode as "Infrastructure".

5. Click Save.

6. Pull out the Ethernet cable.

7. Power off the camera.

8. Power on the camera.



Note:

1. SSID, abbreviated from Service Set Identifier, is the name assigned to the wireless network. The PZ7152's factory SSID setting is set to "default".
2. Select "Ad-Hoc" wireless mode if you want the PZ7152 to communicate without using an AP or wireless router.

For further setup, please refer to user's manual on the software CD.