



VIVOTEK

Video Server VS3100P

Quick Installation Guide

This guide describes the basic functions of VS3100P.

All detailed information is described in the user's manual.

6F, No. 192, Lien-Cheng Rd., Chung-Ho, Taipei County, Taiwan

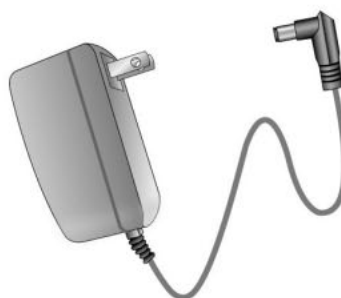
Tel: +886-2-8245-5282 Fax: +886-2-8245-5532 E-mail: sales@vivotek.com <http://www.vivotek.com>

1 Check package contents

● VS3100P



● Power adapter



● Software CD



● I/O connector (attached)



● Quick installation guide

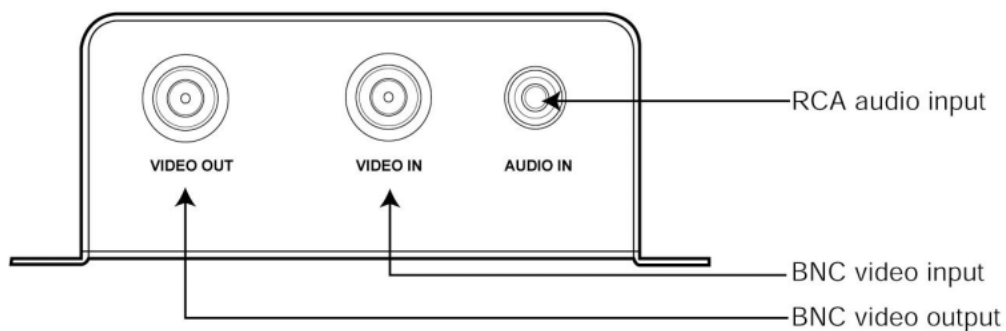


● Warranty card

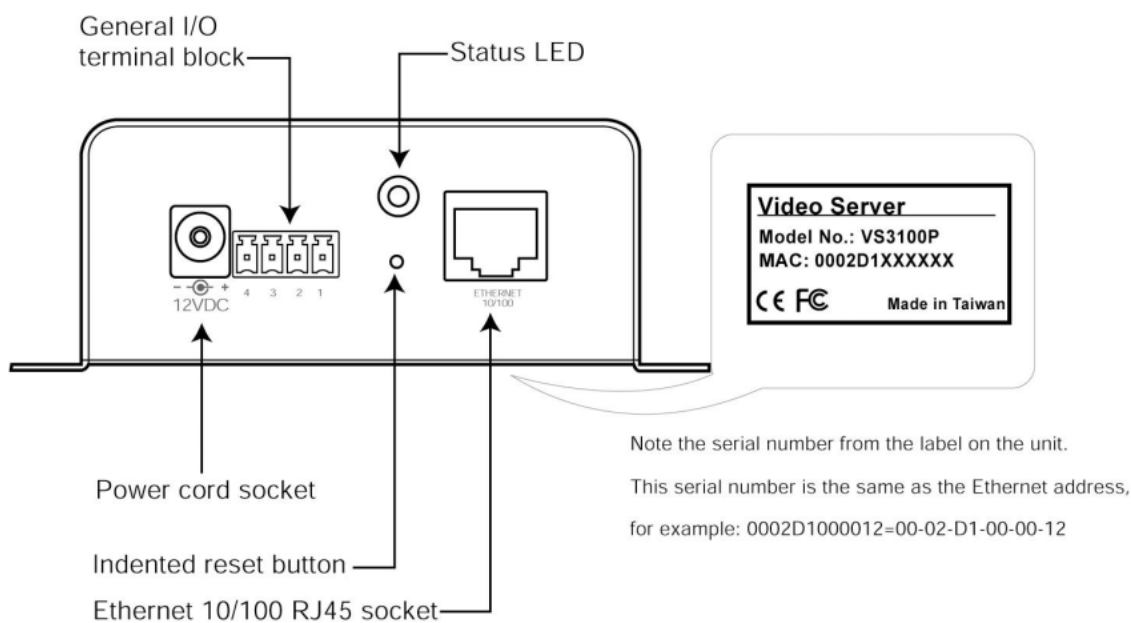


2 Physical description

● Front panel

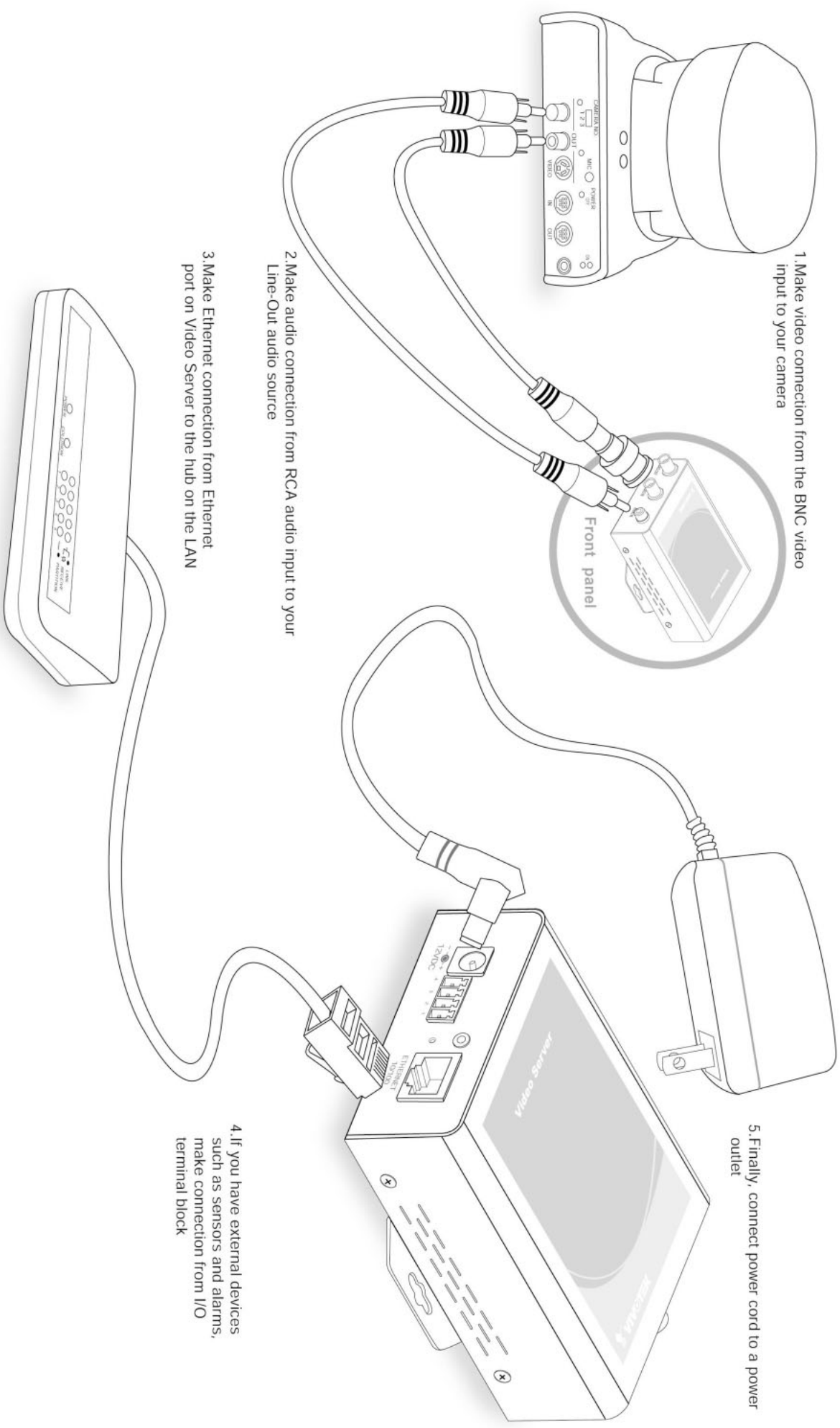


● Back panel



3 Make connections

● Install your Video Server to an Ethernet network



4

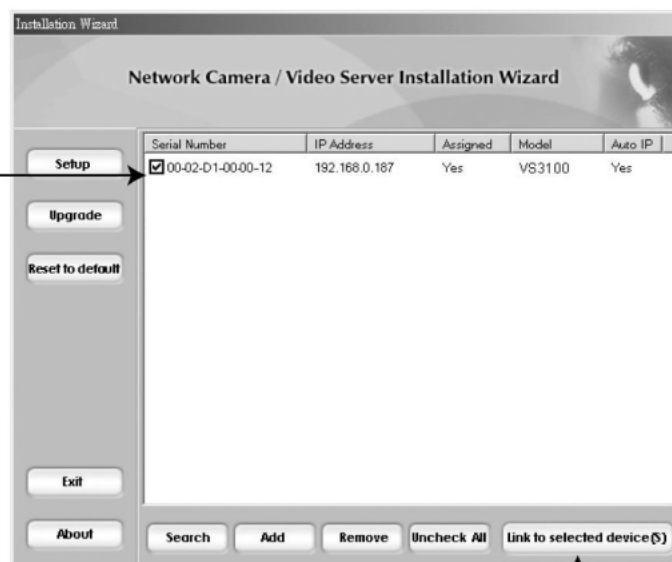
Assign IP address

- 1.Run the "Installation Wizard" under the Software Utility directory from software CD.
- 2.The program will search the servers or cameras on the same LAN.



- 3.After searching, the main installer window will pop up. Click on serial number that matches the one you just noted from **2 Physical description**

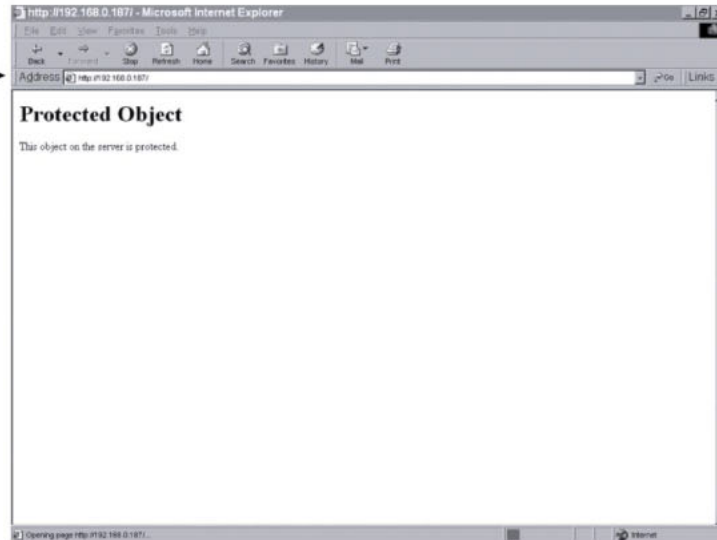
- 4.Click "Link to selected device(s)" to connect the Internet Explorer to the Video Server.



5

Start the Internet Explorer to verify your installation

1.Type the IP address
and press enter



2.Click the configuration
for further installation



For detailed of further configuration, see user's manual in the CD-ROM.



- Power off the Video Server as soon as it is found smoking or smelt unusual.



Contact your distributor when such cases happen.

- Keep the Video Server away from the water. If the Video Server is wet, power off immediately.



Contact your distributor when such cases happen.

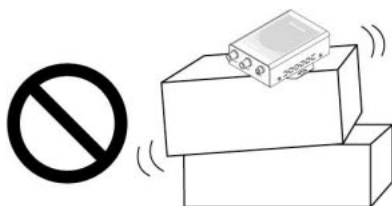
- Do not place the Video Server around the heat sources, such as television or oven.



- Refer to your user's manual for the operating temperature.



- Do not place the Video Server on unsteady surfaces.



- Do not place the Video Server in high humid environments.



- Do not disassemble the Video Server.



- Do not drop the Video Server.

