



VIVOTEK

Video Server VS3102

Quick Installation Guide

This guide describes the basic functions of VS3102.
All detailed information is described in the user's manual.

6F., No. 192, Lien-Cheng Rd., Chung-Ho, Taipei County, Taiwan

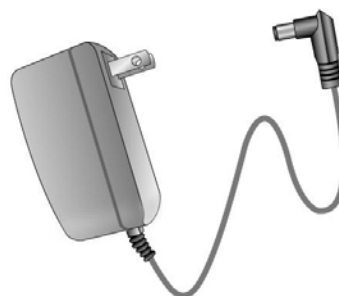
Tel: +886-2-8245-5282 Fax: +886-2-8245-5532 E-mail: sales@vivotek.com <http://www.vivotek.com>

1 Check package contents

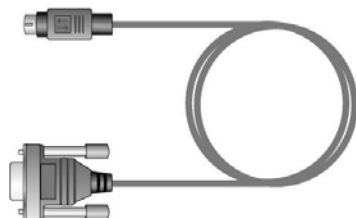
● VS3102



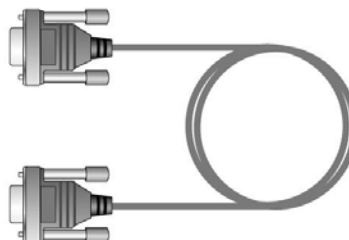
● Power adapter



● Camera control cable



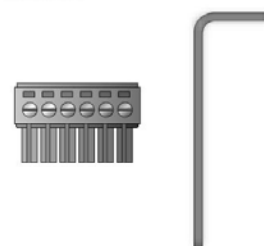
● Null modem cable



● Software CD



● I/O connector and wrench



● Quick installation guide

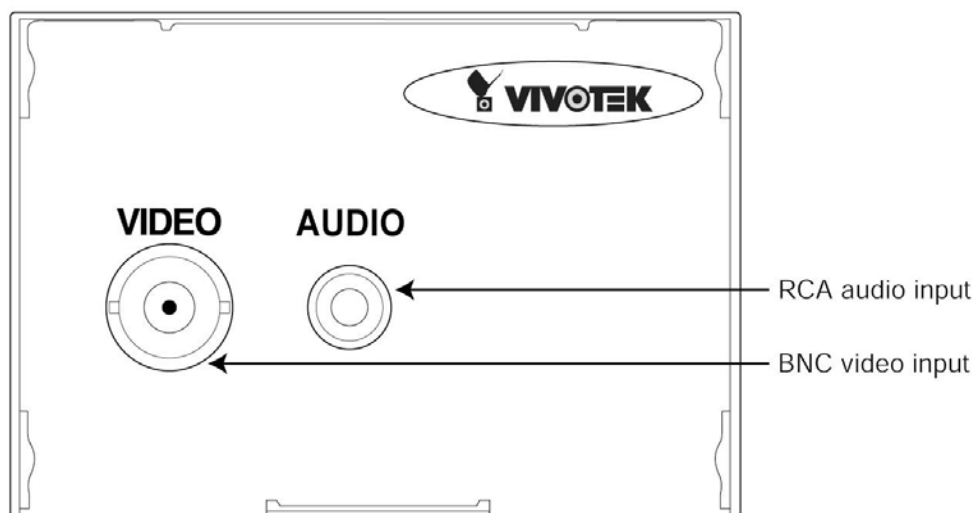


● Warranty card

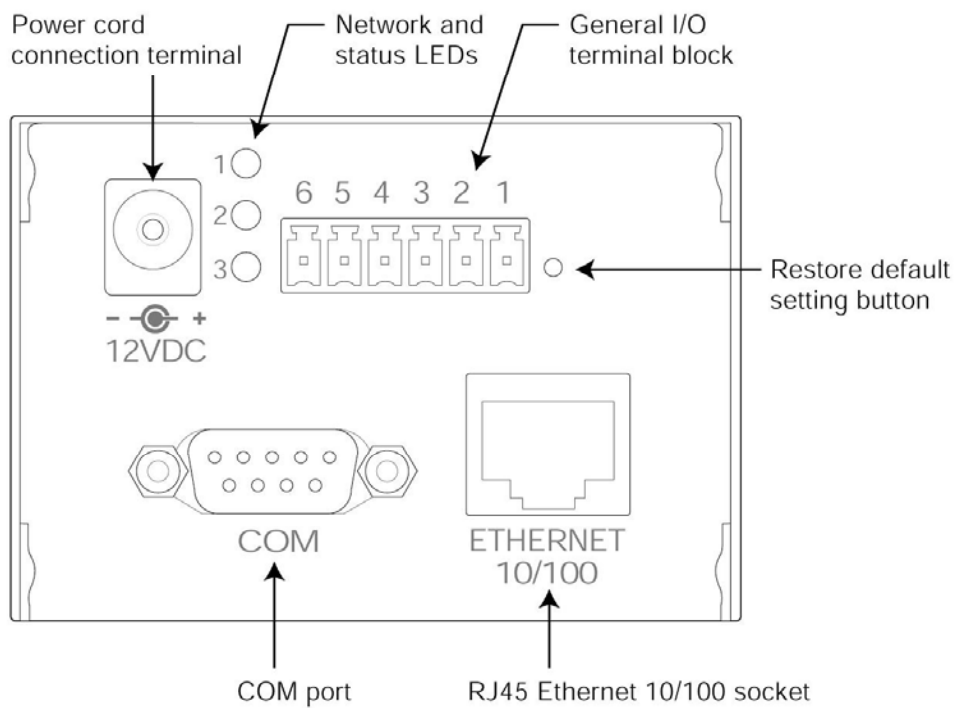


2 Physical description

● Front panel

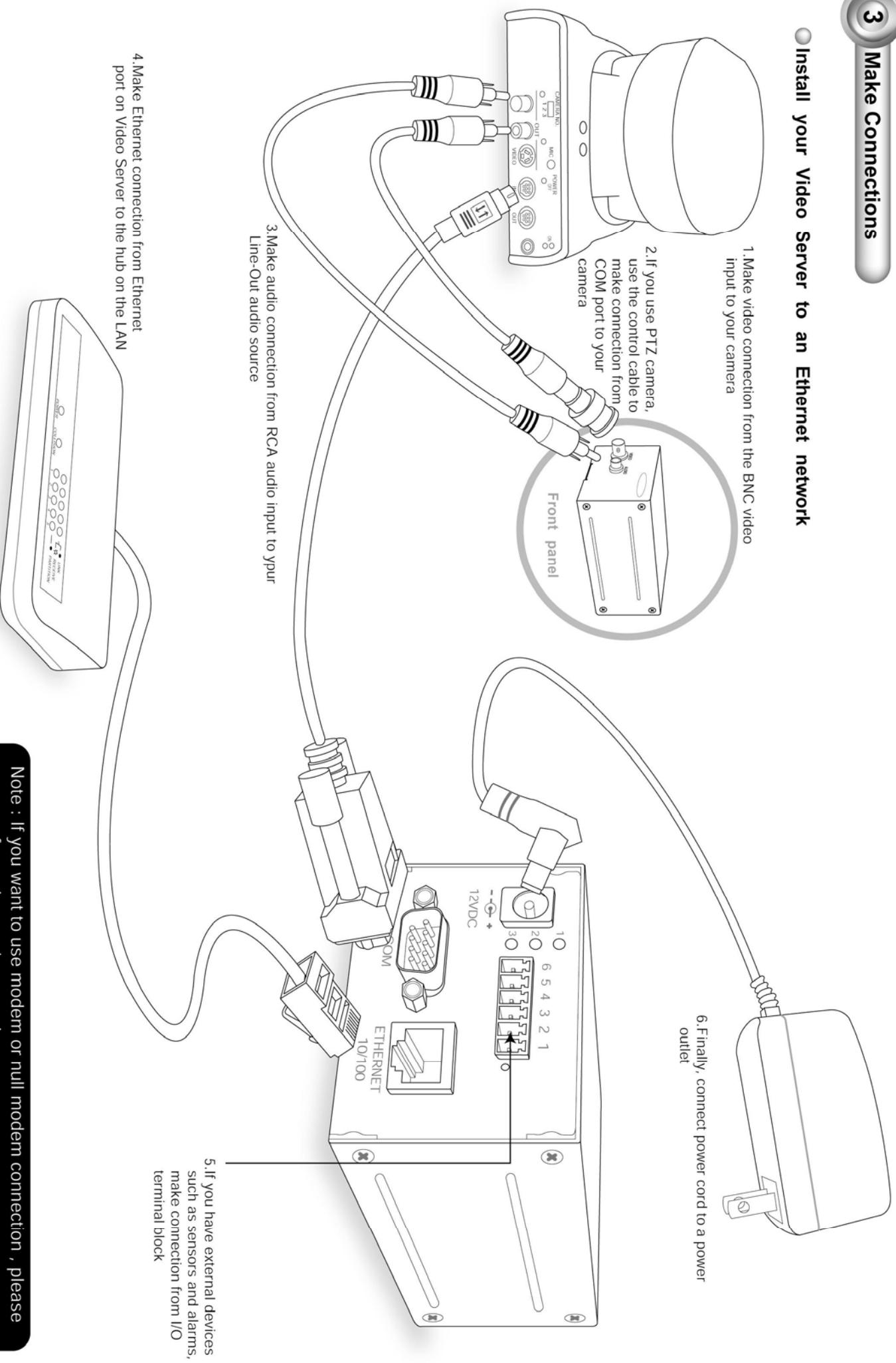


● Rear panel



3 Make Connections

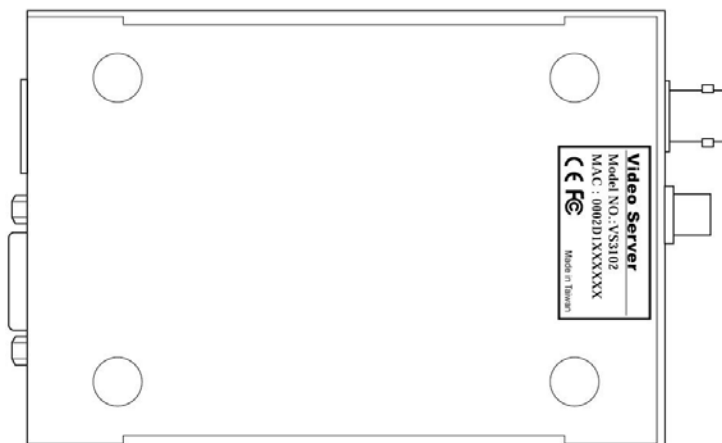
● Install your Video Server to an Ethernet network



Note : If you want to use modem or null modem connection , please refer to the user's manual

4 Assign IP address

- A** Note the serial number from the label on the unit.



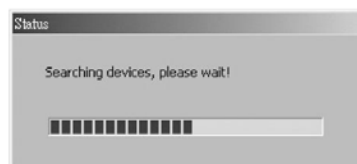
This serial number is same as Ethernet address,
for example: 0002D1000012=00-02-D1-00-00-12

B Assign IP address

● Using Installer program

1.Run the "Installation Wizard" under the Software Utility directory from software CD.

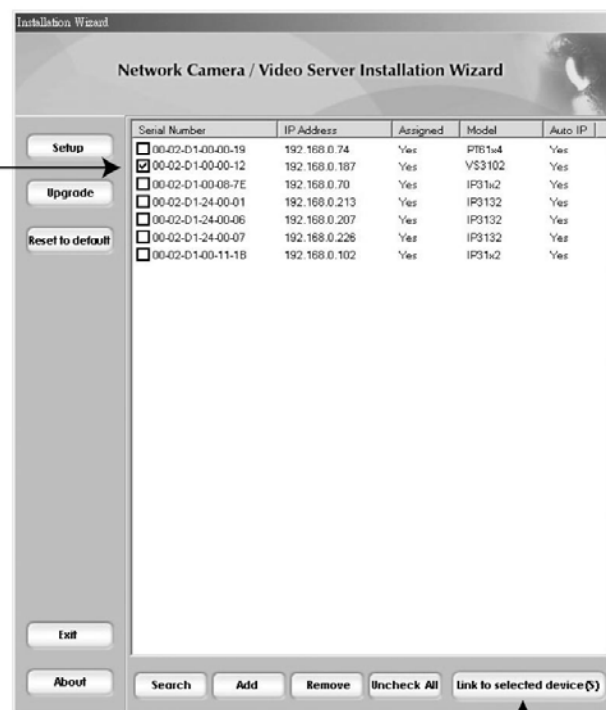
2.The program will search the servers or cameras on the same LAN.



3.After searching, the main installer window will pop up. Click on serial number that matches the one you just noted from

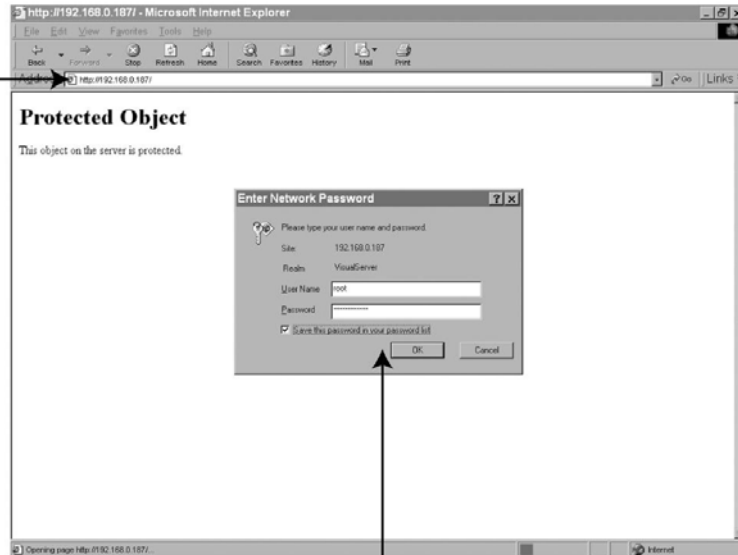
4 Assign IP Address

4.Click "Link to selected device(s)" to connect the Internet Explorer to the Network Camera.

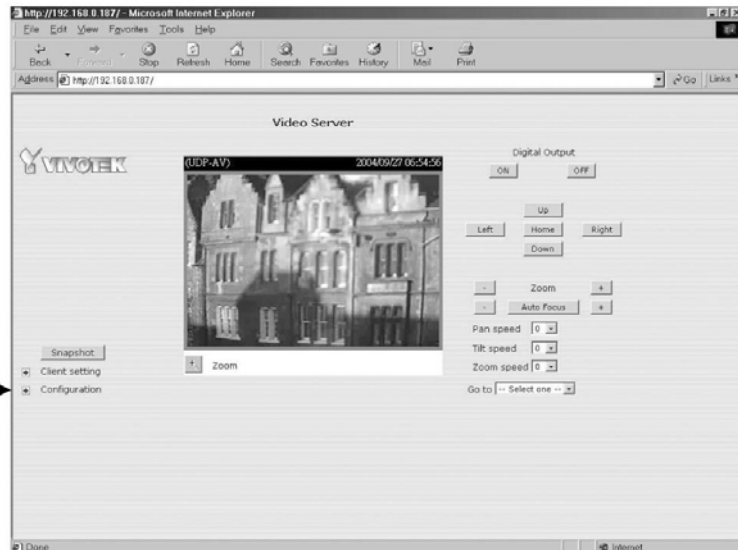


5 Open the Internet Explorer to verify your installation

1. Type the IP address and press enter



2. Type "root" as user name and the serial number as password, then press enter or click ok



3. Click the configuration for further installation

For detailed information on further configuration, see user's manual on the CD.