

# Network Video Server Quick Installation Guide

English | 繁中 | 簡中 | 日本語 | Français | Español | Deutsch | Português | Italiano | Türkçe | Polski | Русский



## VS7100

This guide describes the basic functions of VS7100.

All detailed information is described in the user's manual.





## Warning Before Install

- **Power off the Video Server as soon as it is found smoking or smelt unusual.**



Contact your distributor when such cases happen.

- **Keep the Video Server away from the water. If the Video Server is wet, power off immediately.**



Contact your distributor when such cases happen.

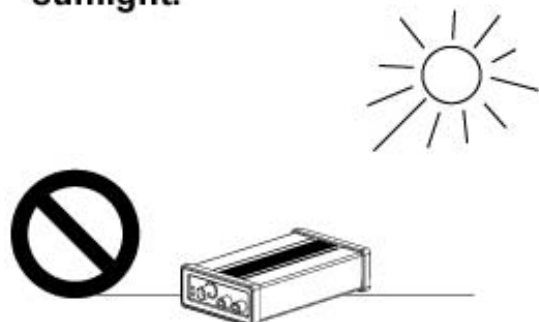
- **Do not place the Video Server around the heat sources, such as television or oven.**



- **Refer to your user's manual for the operating temperature.**



- **Keep the Video Server away from the direct sunlight.**



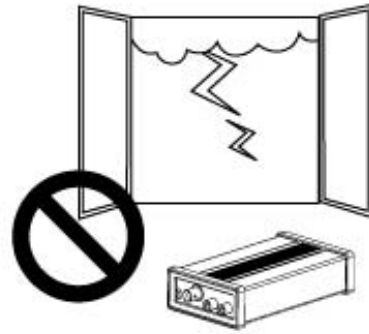
- **Do not place the Video Server in high humid environments.**



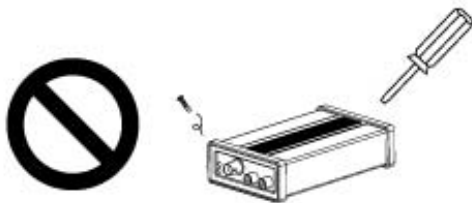
- Do not place the Video Server on unsteady surfaces.



- Do not touch the Video Server when it's lightning.



- Do not disassemble the Video Server.



- Do not drop the Video Server.



- Do not insert any object into the Video Server, such as needles.



# 1 Check Package Contents

## ● VS7100



## ● Power Adapter



## ● Software CD



## ● I/O Connector



## ● Quick Installation Guide



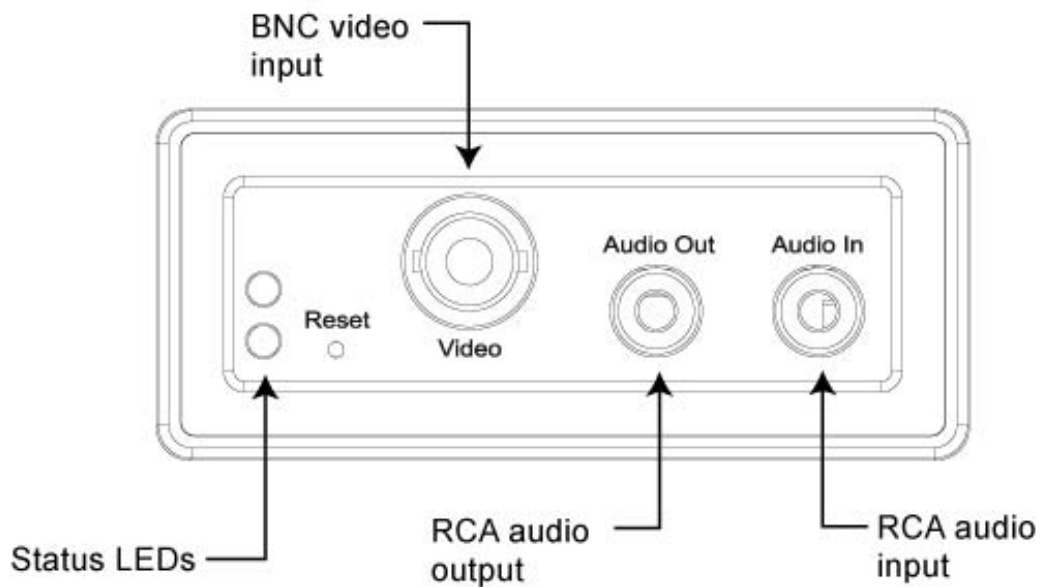
## ● Warranty Card



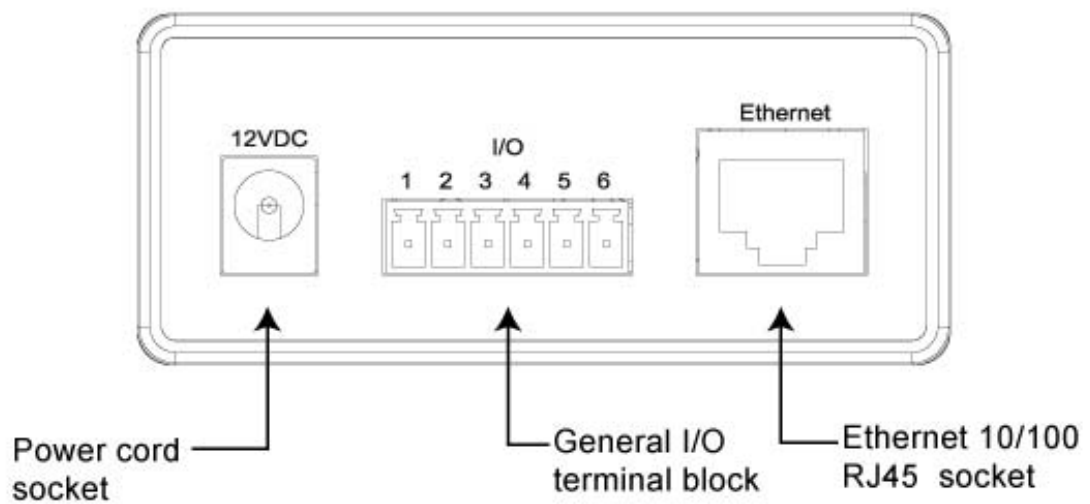
## 2

## Physical Description

### ● Front Panel

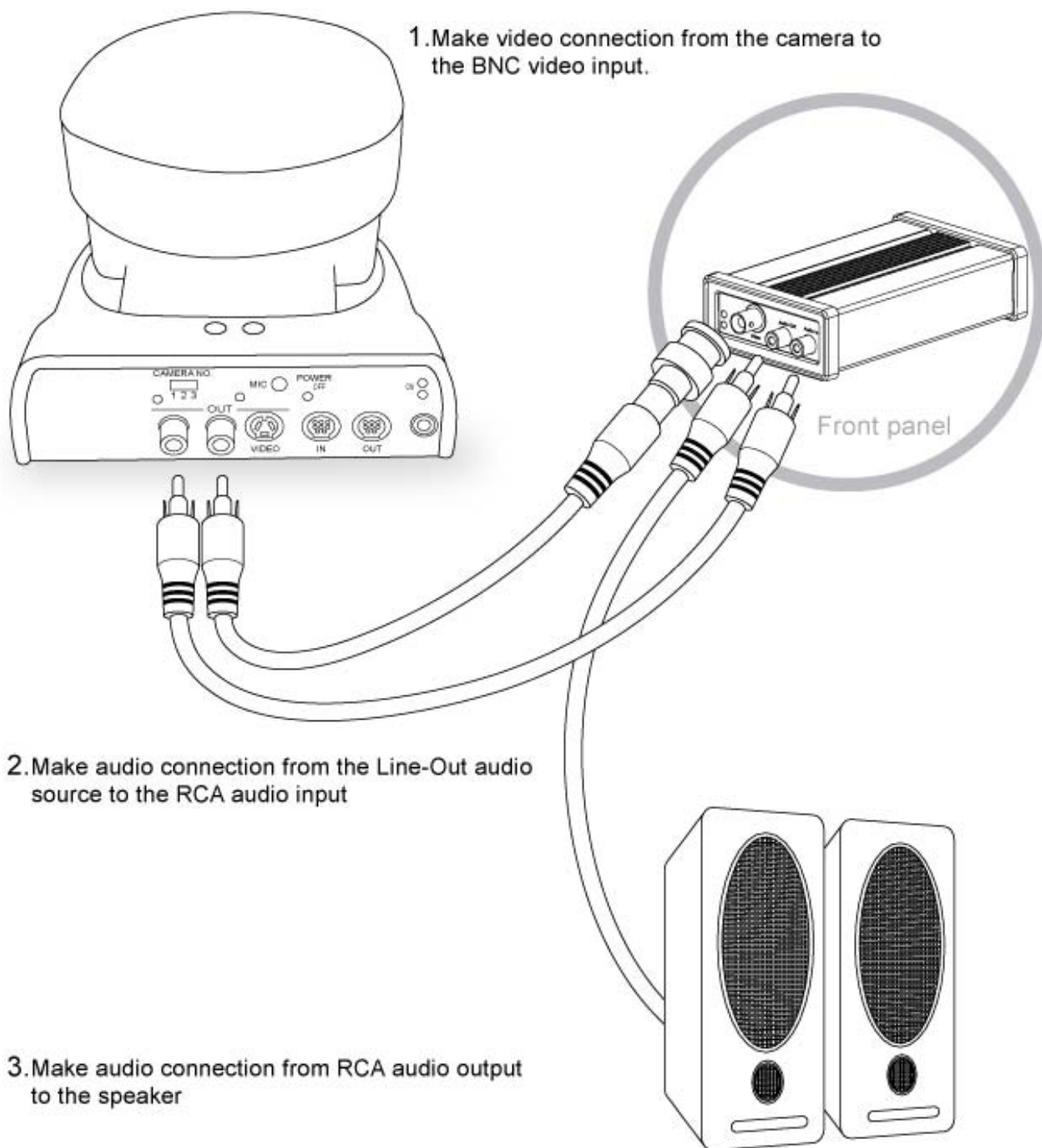


### ● Rear Panel



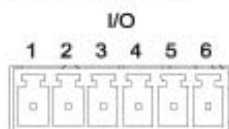
### 3 Make Connections

#### ● Install the Video Server to an Ethernet Network

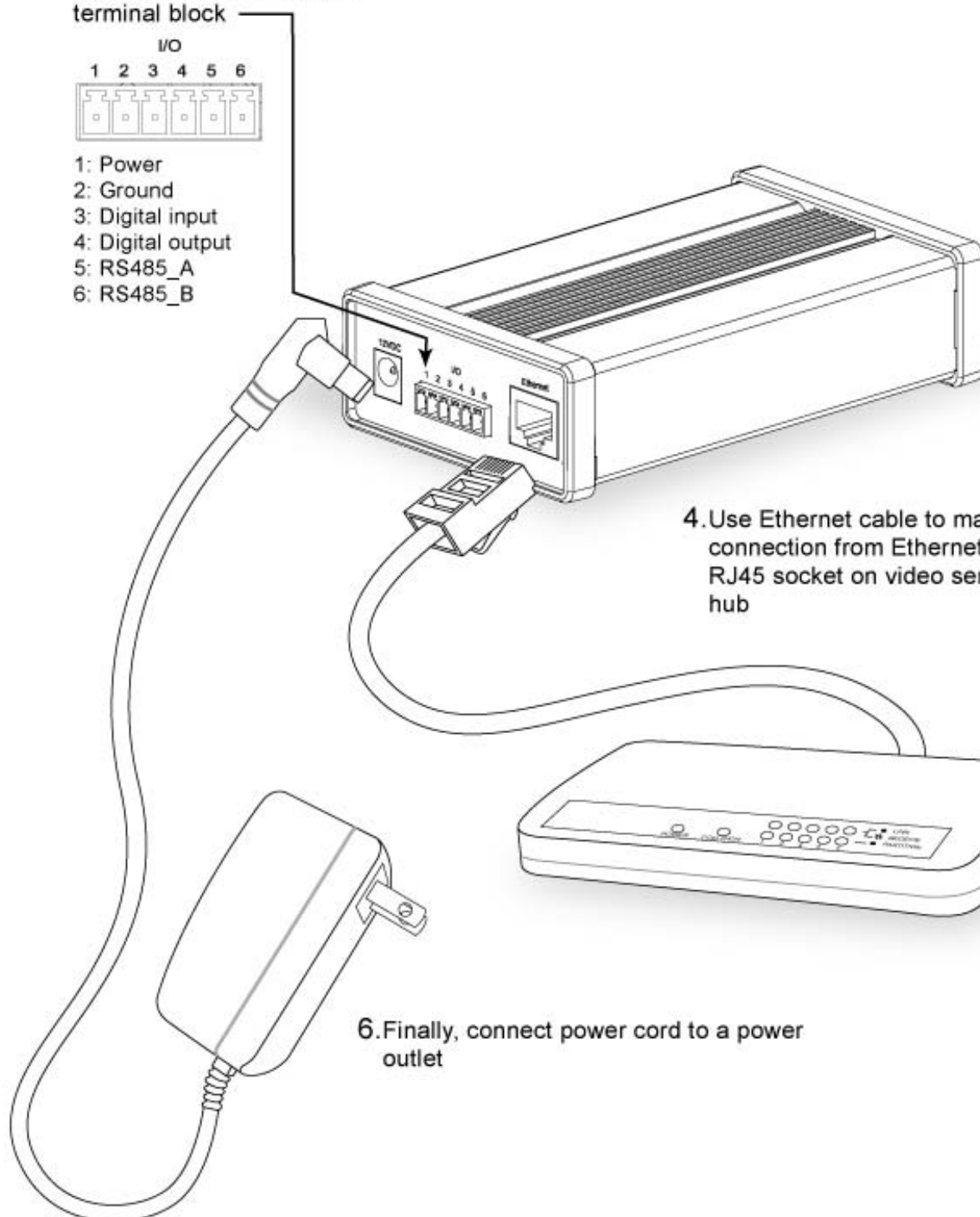




5. If you have external devices such as sensors and alarms, make connection from I/O terminal block



- 1: Power
- 2: Ground
- 3: Digital input
- 4: Digital output
- 5: RS485\_A
- 6: RS485\_B



4. Use Ethernet cable to make connection from Ethernet 10/100 RJ45 socket on video server to the hub

6. Finally, connect power cord to a power outlet

## 4 Assign IP Address

- A** Note the MAC from the product label of your device.



### **B** Assign IP address

- Using Installer program

1. Run the "Installation Wizard 2" under the Software Utility directory from software CD.
2. The program will do some analysis of your network environment, after your network was analyzed, please click on the "Next" button to continue the program.





3. The program will search the Vivotek Video Receivers, Video Servers or Network Cameras on the same LAN.
4. After searching, the main installer window will pop up. Click on the MAC that matches the one you just noted from the product label of your device to connect the Internet Explorer to the Video Server.

**Installation Wizard 2**

Device Selection  
Select a device to setup or upgrade

MAC	IP Address	Model
00-02-01-03-27-87	192.168.0.146	IP31x2
00-02-01-03-27-88	192.168.0.131	IP31x2
00-02-01-12-34-55	192.168.0.101	VS7100

Please check the MAC and model name in the product label of your device first. Then, you can start to link to your device and show the main screen by double clicking the item in the above selection list.

If you are not able to find your device in the above selection list, please make sure all cables are properly connected to your device and then click on the "Refresh Devices" button.

**Network Camera**

Model NO: PT7137 0560

MAC: 0002D1XXXXXX

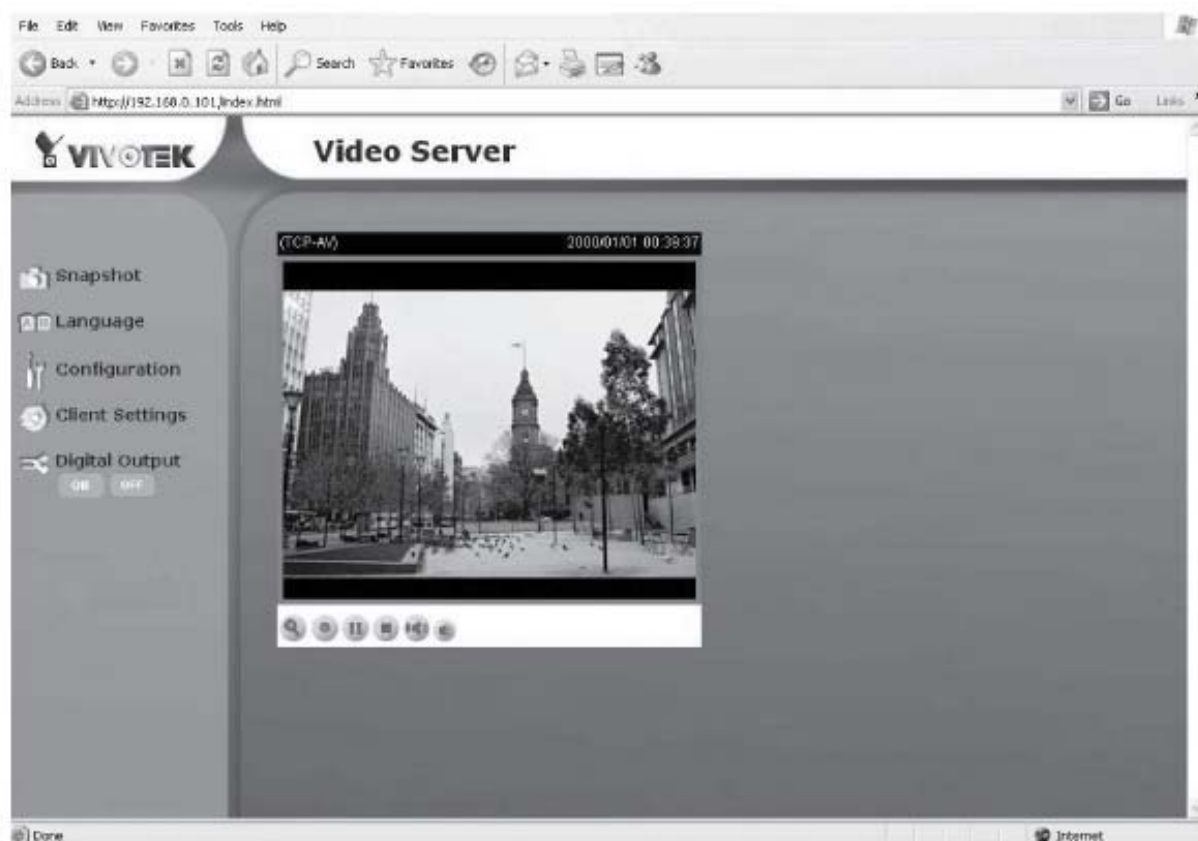
**FC**

Made in Taiwan

This device complies with part 15 of the FCC rules. Operation is subject to the following two conditions: (1) This device may not cause harmful interference, and (2) this device must accept any interference received, including interference from radio transmitting devices.

You can find the product label in the rear/bottom part of your device.

## 5 The Internet Explorer Connects to the Video Server



For further setup, please check the user's manual on the software CD.