

User's Manual

IZ7151

18x Zoom Progressive Scan CCD

Network Camera



Table of Contents

Overview	3
Read Before Use.....	3
Package Contents.....	3
Physical Description.....	4
Installation	7
Hardware Installation.....	7
Network Deployment.....	8
Software Installation.....	11
Accessing the Network Camera	12
Using Web Browsers.....	12
Using RTSP Players.....	14
Using 3GPP Mobile Phones.....	15
Using VIVOTEK Recording Software.....	16
Main Page	17
Client Settings	21
Configuration	23
System.....	23
Security.....	25
Network.....	27
DDNS.....	36
Access List.....	39
Audio and Video.....	41
Motion Detection.....	49
Camera Control.....	52
Application.....	56
Recording.....	64
System Log.....	66
View Parameters.....	67
Maintenance.....	68
Appendix	72
URL Commands for the Network Camera.....	72
Technical Specifications.....	108
Technology License Notice.....	109
Electromagnetic Compatibility (EMC).....	110

Overview

Read Before Use

VIVOTEK IZ7151, featuring a 18x zoom progressive scan CCD module that can capture superior clear images of moving objects that traditional interlaced scanning techniques can not achieve, is a powerful Network Camera for both day and night applications. It effectively reduce motion blur and distorted, jagged edges of recorded images. With a removable IR-cut filter, the Network Camera always provides high-quality color images in both daytime and nighttime. Embedded with self-developed VIVOTEK VVTK-1000 SoC, this Network Camera simultaneously delivers dual streams up to 30 fps in VGA resolution and offers different video quality upon separate multimedia devices for real-time monitoring. Other advanced features, including 3GPP mobile surveillance, 802.3af compliant PoE, two-way audio, RS-485 interface for pan/tilt control on scanners, digital I/O for external sensor and alarm, and back light compensation make VIVOTEK IZ7151 your best choice for remote monitoring.

The use of surveillance devices may be prohibited by law in your country. The Network Camera is not only a high-performance web-ready camera but also can be part of a flexible surveillance system. It is the user's responsibility to ensure that the operation of such devices is legal before installing this unit for its intended use.

It is important to first verify that all contents received are complete according to the Package Contents listed below. Take notice of the warnings in Quick Installation Guide before the Network Camera is installed; then carefully read and follow the instructions in the Installation chapter to avoid damages due to faulty assembly and installation. This also ensures the product is used properly as intended.

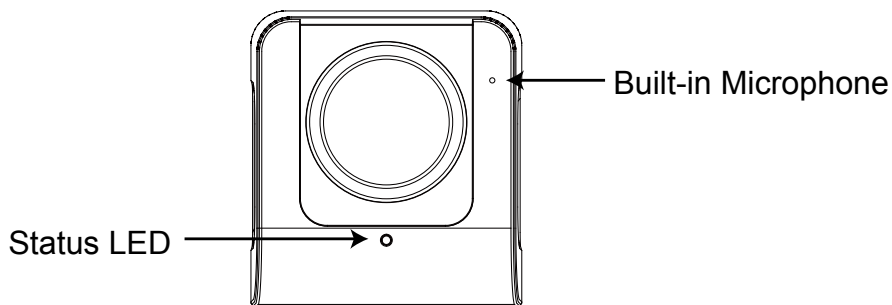
The Network Camera is a network device and its use should be straightforward for those who have basic network knowledge. It is designed for various applications including video sharing, general security/surveillance, etc. The Configuration chapter suggests ways to best utilize the Network Camera and ensure proper operations. For the creative and professional developers, the URL Commands for the Network Camera section serves to be a helpful reference to customize existing homepages or integrating with the current web server.

Package Contents

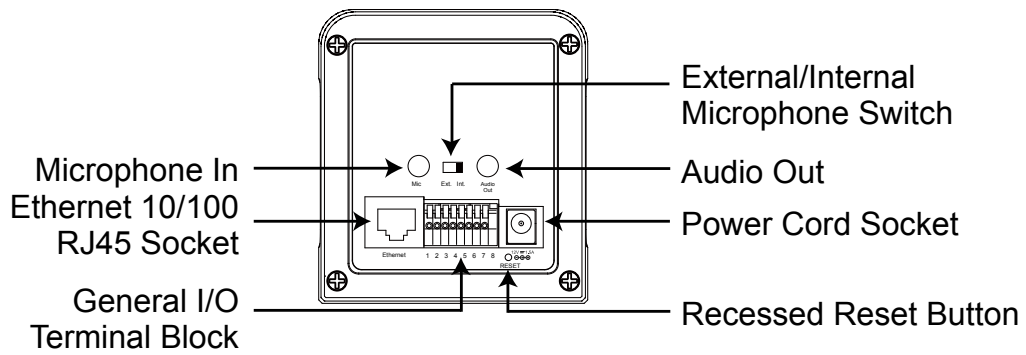
- IZ7151
- Power Adapter
- Camera Stand
- Screws and Top Mounting Stand
- Quick Installation Guide
- Software CD
- Warranty Card

Physical Description

Front View

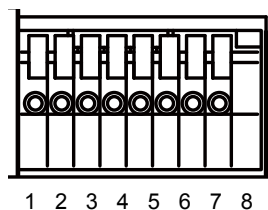


Rear View



General I/O Terminal Block

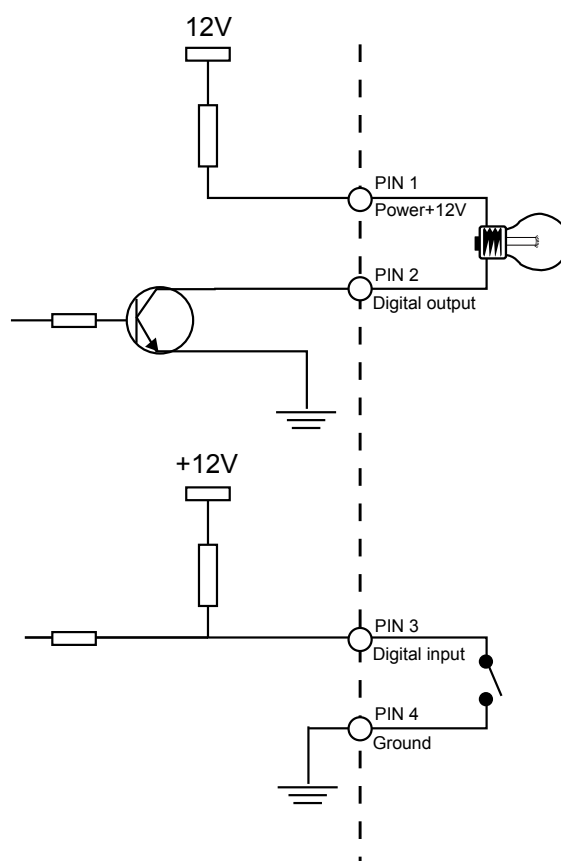
This Network Camera provides a general I/O terminal block which is used to connect external input / output devices. The pin definitions are described below.



- 1** : Power +12V
- 2** : Digital output
- 3** : Digital input
- 4** : Ground
- 5** : AC 24V
- 6** : AC 24V
- 7** : RS485+
- 8** : RS485-

DI/DO Diagram

Pin 1~4 are used to connect with digital input and digital output devices. Refer to the following illustration for connection method.

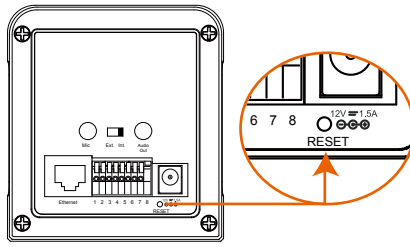


Status LED

The color of LED indicates the status of the Network Camera.

Status LED Color	Description
Blinking red	Power is being supplied to the Network Camera.
Solid green	The Network Camera is booting up.
Solid green with blinking red in between	The Network Camera is trying to obtain an IP address.
Solid green and red	An IP address is successfully assigned to the Network Camera.
Solid red with blinking green in between	The Network Camera is working.
Blinking red and green	During firmware upgrade

Hardware Reset



There is an indented reset button on the back panel of the Network Camera. It is used to reboot the Network Camera or restore the Network Camera to factory default. Sometimes rebooting the Network Camera sets the Network Camera back to normal state. If the problems remain after rebooting, restore the factory default and install again.

Reboot : Press and release the indented reset button with a needle. Wait for the Network Camera to reboot.

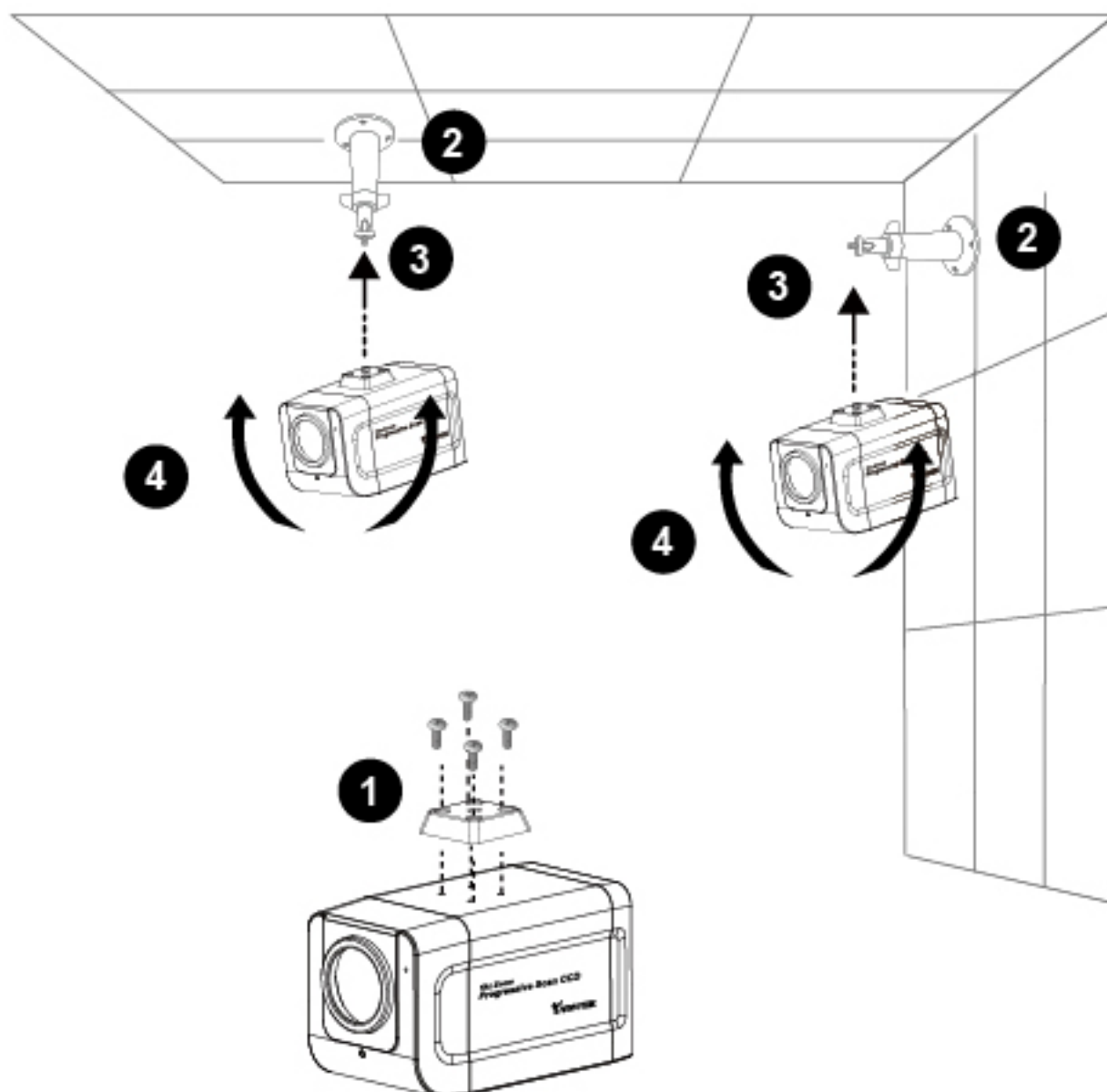
Restore : Press the indented reset button continuously for around 30 seconds until the status LED rapidly blinks red and green simultaneously. Note that all settings will be restored to factory default.

Installation

Hardware Installation

Follow the steps below to install the Network Camera to the wall / ceiling.

- 1** : Attach the top mounting stand to the Network Camera using the supplied screws.
- 2** : Fasten the Network Camera stand to the wall / ceiling.
- 3** : Secure the Network Camera to the stand.
- 4** : Position the Network Camera with the lens facing the desired monitoring area.



Network Deployment

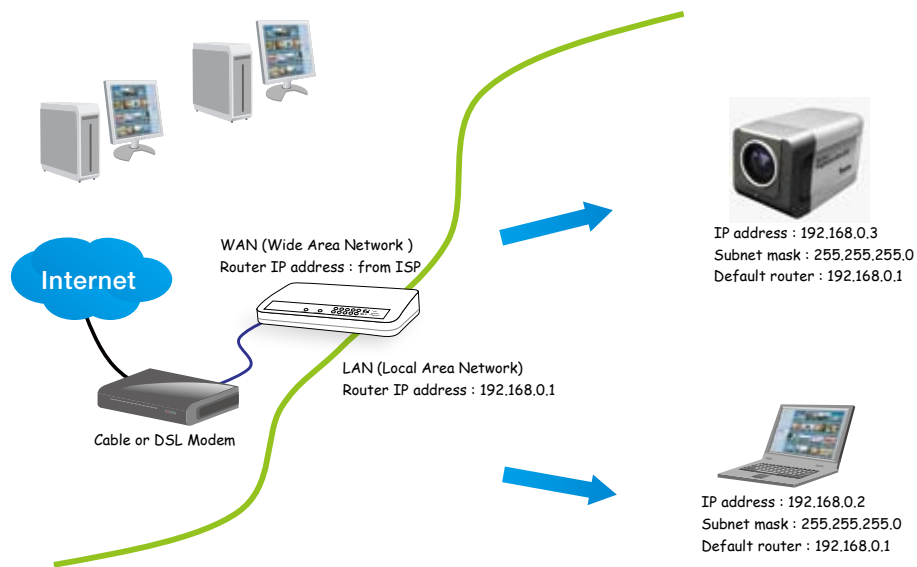
Setup the Network Camera over the Internet

This section explains how to configure the Network Camera to Internet connection. There are several ways to setup the Network Camera over the Internet. The first way is to setup the Network Camera behind a router. The second way is to utilize a static IP. The third way is to use PPPoE.

Internet connection via a router

Before setting up the Network Camera over the Internet, make sure you have a router

- 1 : Connect your Network Camera behind a router, the Internet environment is illustrated as below.



- 2 : In this case, if the LAN (Local Area Network) IP address of your Network Camera is 192.168.0.3, please forward the following ports for the Network Camera on the router.

- HTTP port
- RTSP port
- RTP port for audio
- RTCP port for audio
- RTP port for video
- RTCP port for video

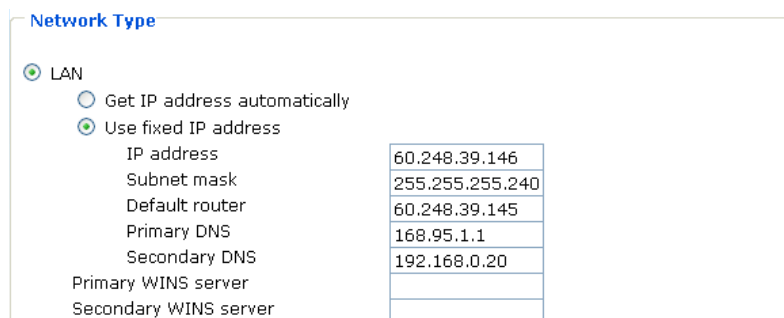
If you have changed the port numbers on the Network page, please open the ports accordingly on your router. For information on how to forward ports on the router, please refer to the user's manual of your router.

- 3 : Find out the public IP address of your router provided by your ISP (Internet Service Provider). Use the public IP and the secondary HTTP port to access the Network Camera from the Internet.

Internet connection with static IP

Choose this connection type if you are required to use a static IP for the Network Camera.

- 1** : Set up the Network Camera in a local area network.
- 2** : Go to Configuration > Network > Network Type. Select LAN > Use fixed IP address.
- 3** : Enter the static IP, Subnet mask, Default router, Primary DNS provided by your ISP.



The screenshot shows the 'Network Type' configuration window. The 'LAN' option is selected. Under 'LAN', 'Use fixed IP address' is selected. The configuration fields are as follows:

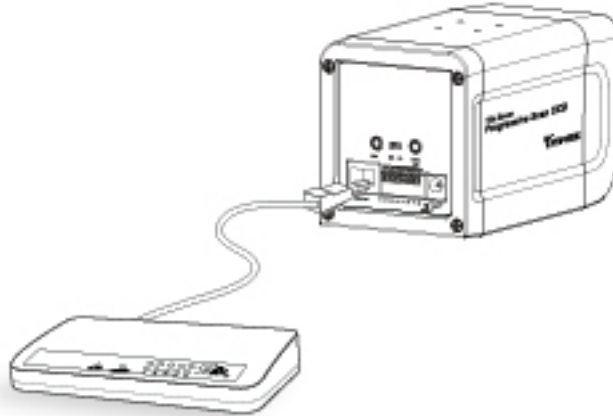
IP address	60.248.39.146
Subnet mask	255.255.255.240
Default router	60.248.39.145
Primary DNS	168.95.1.1
Secondary DNS	192.168.0.20
Primary WINS server	
Secondary WINS server	

Internet connection via PPPoE (Point-to Point over Ethernet)

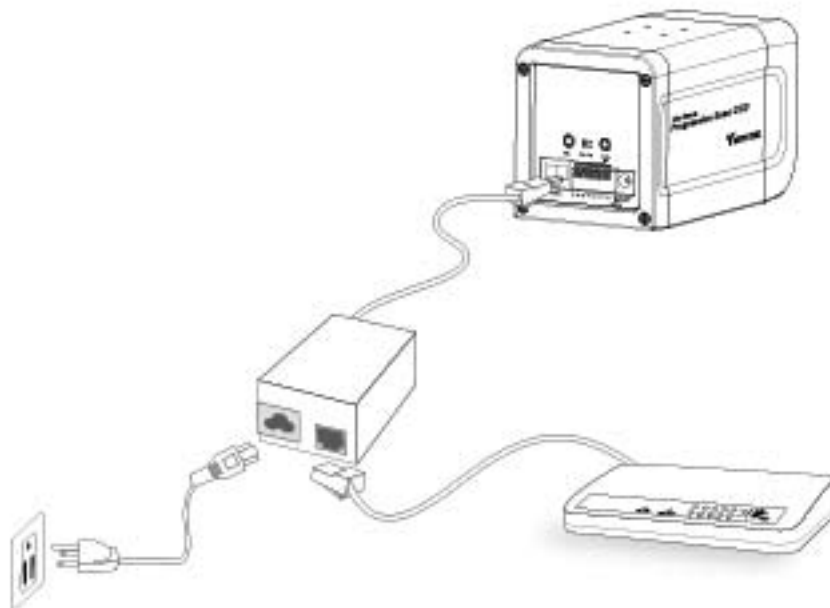
Choose this connection type if you are connected to the Internet via a DSL Line. See PPPoE on page 28 for details.

Power over Ethernet (PoE)

The Network Camera is PoE-compliant, allowing transmission of power and data via single Ethernet cable. If your switch/router supports PoE, refer to the following illustration to connect the Network Camera to a PoE-enabled switch/router via Ethernet cable.



If your switch/router does not support PoE, use a PoE power injector (optional) to connect between the Network Camera and a non-PoE switch/router.



Software Installation

Installation Wizard 2, a software packaged in the product CD, helps to locate your Network Camera in a local area network.

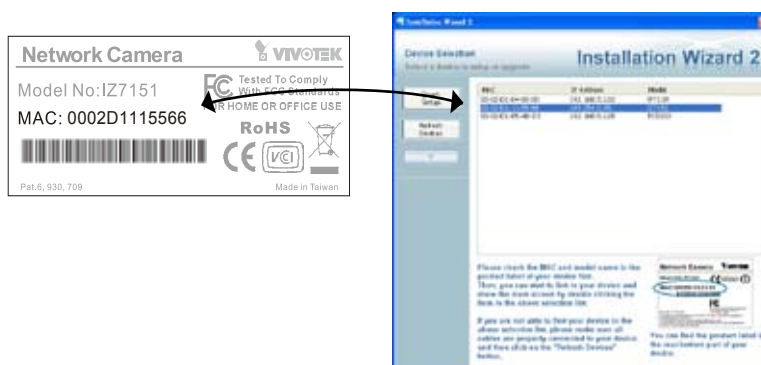
- 1 : Install the "Installation Wizard 2" under the Software Utility directory from software CD. Double click the Installation Wizard 2 shortcut on your desktop to launch the program.



- 2 : The program will conduct analyses on your local area network environment. After your network environment is analyzed, please click Next to continue the program.



- 3 : The program will search all VIVOTEK devices in the same local area network.
- 4 : After searching, the main installer window will pop up. Click on the MAC that matches the one labeled on the back of your device to connect to the Network Camera.

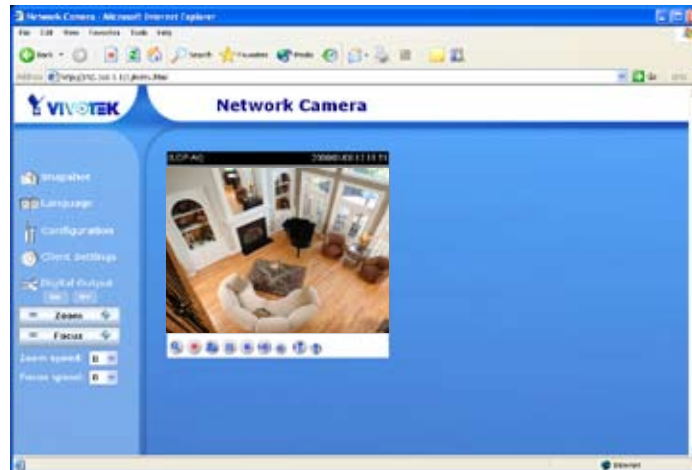


Accessing the Network Camera

This chapter explains how to access the Network Camera using web browsers, RTSP players, 3GPP mobile phones and VIVOTEK recording software.

Using Web Browsers

- 1** : Launch your web browser (ex. Microsoft® Internet Explorer, Mozilla Firefox or Netscape).
- 2** : Enter the IP address of the Network Camera in the address field. Press Enter.
- 3** : The live video will be displayed in your web browser.



NOTE :

- ▶ *By default, the Network Camera is not password-protected. To prevent unauthorized accesses, it is highly recommended to set a password for the Network Camera. For more information on how to enable password protection, see Security on page 25.*
- ▶ *If you see a warning message at initial access, click Yes to install an ActiveX® control on your computer.*

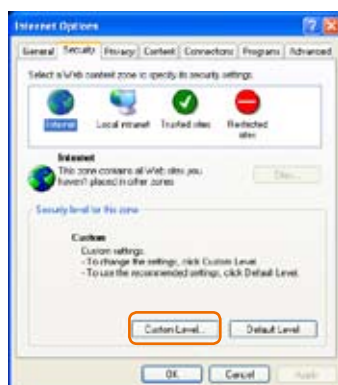


- ▶ *For Mozilla Firefox or Netscape users, your browser will invoke Quick Time to stream the live video.*

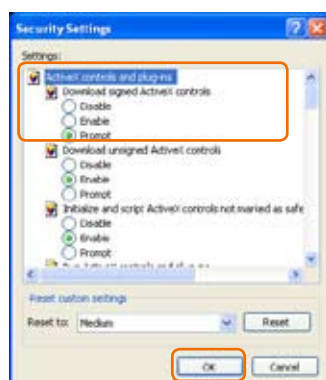


► If you see a dialog box indicating that your security settings prohibit running ActiveX® Controls, please enable your ActiveX® Controls for your browser.

1 : Choose Tools > Internet Options > Security > Custom Level.








2 : Look for Download signed ActiveX® controls; select Enable or Prompt. Click OK.

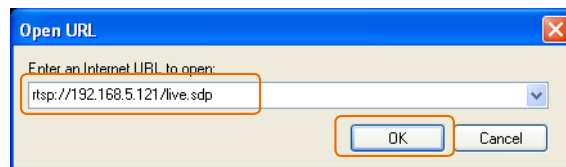


Using RTSP Players

To view the MPEG-4 streaming media using RTSP players, you can use one of the following players that support RTSP streaming.

-  Quick Time Player
-  Real Player
-  VLC media player
-  mpegable Player
-  pvPlayer

- 1** : Launch a RTSP player.
- 2** : Choose File > Open URL. This opens the URL dialog box.
- 3** : Type the URL command in the text box.
The format is `rtsp://<ip address>:<rtsp port>/<access name for stream1 or stream2>`
For example:



- 4** : The live video will be displayed in your player.
For more information on how to configure RTSP access name, see RTSP Streaming on page 33.



Using 3GPP Mobile Phones

To view the streaming media using mobile phones, make sure the Network Camera is setup on the Internet. For more information on how to set up the Network Camera over the internet, see Setup the Network Camera over the Internet on page 8.

To utilize this feature, please check the settings on the Network Camera.

- 1** : Because most players on 3GPP mobile phones do not support RTSP authentication, make sure the authentication mode of RTSP streaming is set to disable. For more information, see RTSP Streaming on page 33.
- 2** : As the 3G network bandwidth is limited, you can't use large video size. Please set the video and audio streaming parameters as listed below. For more information, see Audio and Video on page 41.

Video Mode	MPEG-4
Frame size	176 x 144
Maximum frame rate	5 fps
Intra frame period	1S
Video quality (Constant bit rate)	40kbps
Audio type (GSM-AMR)	12.2kbps

- 3** : As most ISP and players do not allow or support port number other than 554 to allow RTSP streaming to go through, please set the RTSP port to 554. For more information, see RTSP Streaming on page 33.
- 4** : Launch the players on 3GPP mobile phones, (ex. Real Player). Type the URL commands in the player. The format is `rtsp://<public ip address of your camera>:<rtsp port>/<access name for stream1 or stream2>`.

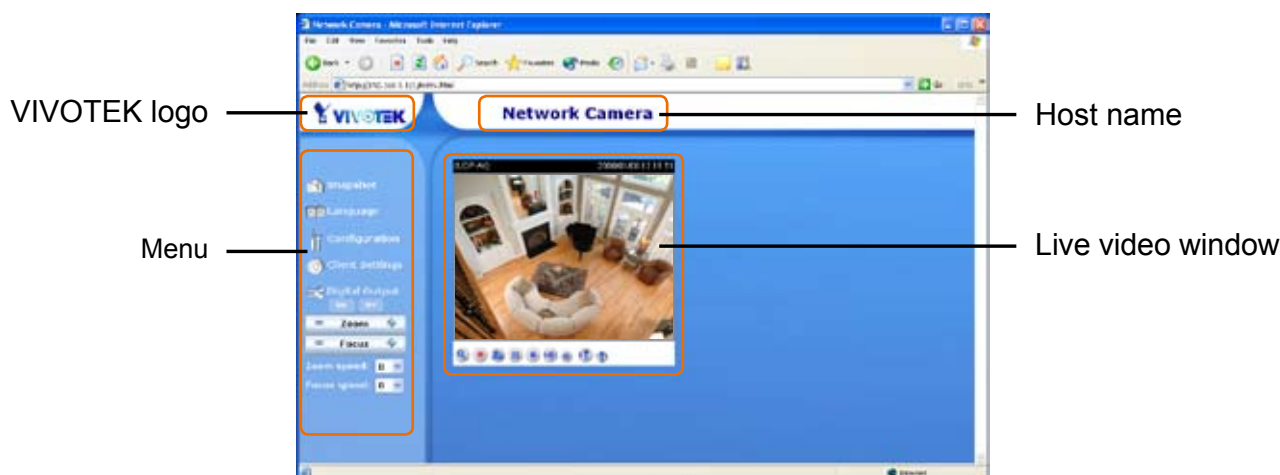
Using VIVOTEK Recording Software

The product software contains a recording software, allowing simultaneous monitoring and video recording for multiple Network Cameras. Please install the recording software; then launch the program to add the Network Camera to the Channel list. For detailed information on how to use the recording software, please refer to the user's manual packaged with the software or download it at <http://www.vivotek.com>



Main Page

This chapter explains the layout of the main page. It is composed of the following four sections: VIVOTEK Logo, Menu, Host Name and Live Video Window.



VIVOTEK Logo

VIVOTEK : Click this logo to visit VIVOTEK website.

Menu

Snapshot : Click this button to capture and save still images. The captured image is displayed in a pop-up window. Right-click the image and choose Save Picture As to save it in JPEG (*.jpg) or BMP (*.bmp) format.

Language : Click this button to choose a language for the displayed interface. Language options are available in: English, Deutsch, Español, Français, Italiano, 日本語, Português, 简体中文 and 繁體中文.

Configuration : Click this button to access the Network Camera configuration page. It is suggested that a password is applied to the Network Camera so that only administrators can configure the Network Camera. For more information, see Configuration on page 23.


Client Settings : Click this button to access the client setting page. For more information, see Client Settings on page 21.

Digital Output : Click this button to turn on or off the digital output devices.

Zoom : Click + to enlarge the subjects. Click - to reduce the size of subjects.

Focus : Click + to shoot close-up subjects. Click - to shoot faraway subjects.

Zoom speed / Focus speed : Adjust the speed of zoom and focus.

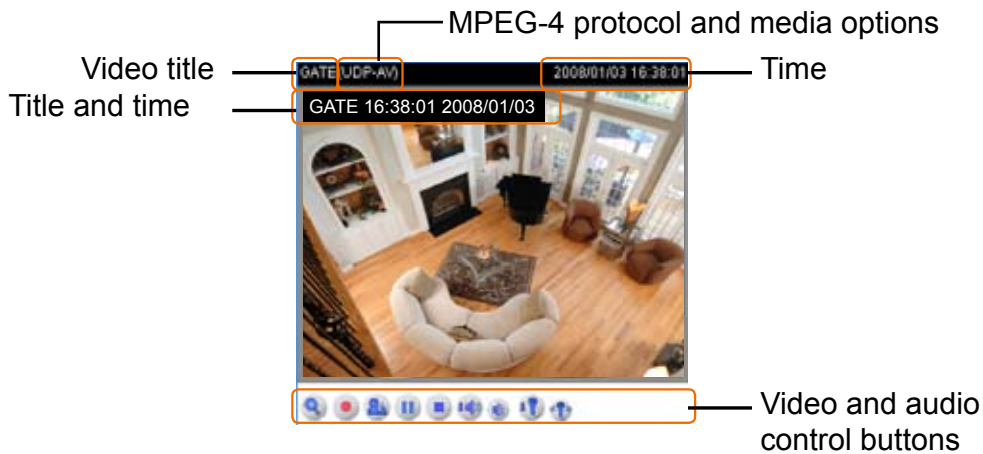
Zoom speed	Focus speed	
-3	-3	Slower  Faster
-2	-2	
-1	-1	
0	0	
1	1	
2	2	
3	3	

Host Name

Host Name : The host name can be customized to fit your needs. For more information, see System on page 23.

Live Video Window

The following window is displayed when the video mode is set to MPEG-4:



Video title : The video title can be configured. For more information, see Video settings on page 41.

Title and time : Video title and time can be stamped on the streaming video. For more information, see Video settings on page 41.

MPEG-4 protocol and media options : The transmission protocol and media options for MPEG-4 video streaming. For more information, see Client Settings on page 21.

Time : Display the current time.

Video and audio control buttons : Depending on the Network Camera model and Network Camera configuration, some buttons may not be available.

Digital zoom edit : Deselect Disable digital zoom to enable the zoom operation. The navigation screen indicates which part of the image is being magnified. To control the zoom level, drag the slider bar. To move to a different area you want to magnify, drag the navigation screen.



Start MP4 Recording : Click this button to record video clips in MP4 file format to your computer. Press the **Stop MP4 recording** button to end recording. When you quit the web browser, video recording stops accordingly. To specify the storage destination and the file name, see MP4 Saving Options on page 22 for details.

Talk : Click this button to talk to people around the Network Camera. Audio will come out from the external speaker connected to the Network Camera.

Pause : Pause the transmission of streaming media. The button becomes **Resume** button after clicking the Pause button.

Resume : Resume the transmission of streaming media. The button becomes **Pause** button after clicking the Resume button.

Stop : Stop the transmission of streaming media. Click the **Play** button to continue transmission.

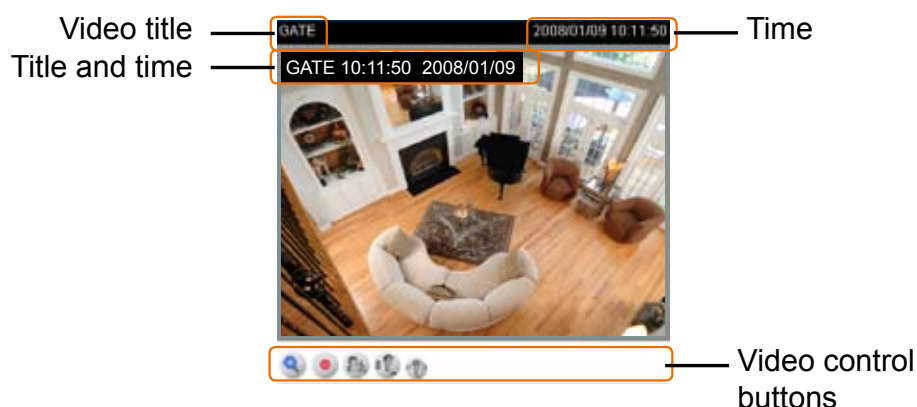
Volume : When the **mute** function is not activated, move the slider bar to adjust the volume at local computer.

Mute : Turn off the **volume** at local computer.

Mic Volume : When the **mute** function is not activated, move the slider bar to adjust the microphone volume at local computer.

Mute : Turn off the **microphone volume** at local computer.

The following window is displayed when the video mode is set to MJPEG:



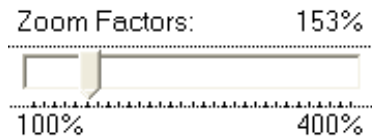
Video title : The video title can be configured. For more information, see Video settings on page 41.

Title and time : Video title and time can be stamped on the streaming video. For more information, see Video settings on page 41.

Time : Display the current time.

Video and audio control buttons : Depending on the Network Camera model and Network Camera configuration, some buttons may not be available.

Digital zoom edit : Deselect Disable digital zoom to enable the zoom operation. The navigation screen indicates which part of the image is being magnified. To control the zoom level, drag the slider bar. To move to a different area you want to magnify, drag the navigation screen.



● **Start MP4 Recording** : Click this button to record video clips in MP4 file format to your computer. Press the ● **Stop MP4 recording** button to end recording. When you qite the web browser, video recording stops accordingly. To specify the storage destination and the file name, see MP4 Saving Options on page 22 for details.

🗣️ **Talk** : Click this button to talk to people around the Network Camera. Audio will come out from the external speaker connected to the Network Camera.

🔊 **Mic Volume** : When the 🗣️ mute function is not activated, move the slider bar to adjust the microphone volume at local computer.

🔇 **Mute** : Turn off the 🗣️ microphone volume at local computer.

Client Settings

This chapter explains how to select the streaming source, transmission mode and saving options at local computer. It is composed of the following four sections: Stream Options, MPEG-4 Media Options, MPEG-4 Protocol Options and MP4 Saving Options. When completed with the settings on this page, click Save to take effect.

Stream Options

Stream Options

Stream 1

Stream 2

The Network Camera support dual streams: MPEG-4 and Motion JPEG. Select the streaming source from stream 1 or stream 2. For more information, see Video settings on page 41.

MPEG-4 Media Options

MPEG-4 Media Options

Video and Audio

Video Only

Audio Only

Select to stream video or audio data. This works only when the video mode is set to MPEG-4.

MPEG-4 Protocol Options

MPEG-4 Protocol Options

UDP Unicast

UDP Multicast

TCP

HTTP

Depending on your network environment, there are four choices of transmission modes for MPEG-4 streaming:

UDP unicast : This protocol allows for more real-time audio and video streams. However, network packets may be lost due to network burst traffic and images may be obscured. Activate UDP connection when occasions require time-sensitive responses and video quality is less important. Note that each unicast client connecting to the server takes up additional bandwidth and the Network Camera allows up to ten simultaneous accesses.

UDP multicast : This protocol allows multicast-enabled routers to forward network packets to all clients requesting streaming media. This helps to reduce the network transmission load of the Network Camera while serving multiple clients at the same time. Note that to utilize this feature, the Network Camera must be configured to enable multicast streaming at the same time. For more information, see RTSP Streaming on page 33.

TCP : This protocol guarantees the delivery of streaming data and thus provides better video quality. Nevertheless, the downside with this protocol is that the real-time effect is worse than that with the UDP protocol for a narrower bandwidth.

HTTP : This protocol allows the same quality as TCP protocol and the users don't need to open specific port for streaming under some network environment. Users inside a firewall can utilize this protocol to allow streaming data to come through.

MP4 Saving Options

MP4 Saving Options

Folder:

File name prefix:

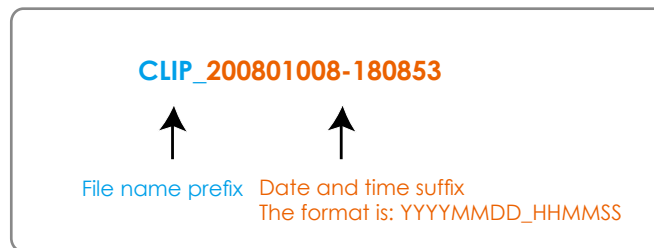
Add date and time suffix to file name

Users can record the live video as they are watching it by clicking Start MP4 Recording on the main page. Here, you can specify the storage destination and file name.

Folder : Specify a storage destination for the recorded video files.

File Name Prefix : Enter the text that will be put in front of the video file name.

Add date and time suffix to the file name : Select this option to add date and time to the file name suffix.



Configuration

Only Administrators can access the system configuration page. Each category in the left column will be explained in the following sections.

System

This section explains how to configure the basic settings for the Network Camera, such as the host name and system time. It is composed of the following three columns: System, System Time and DI and DO. When completed with the settings on this page, click Save to take effect.

System

System

Host name:

Turn off the LED indicator

Host name : Set a desired name for the Network Camera. The text is displayed at the top of the main page.

Turn off the LED indicator : Select this option to turn off the LED illuminators. This will prevent the Network Camera's operation from being noticed.

System Time

System Time

Enable Daylight Saving Time
Note: You can upload your Daylight Saving Time rules on [Maintenance](#) page or use the camera default value.

Time zone:
 GMT+08:00 Beijing, Chongqing, Hong Kong, Kuala Lumpur, Singapore, Taipei ▼

Keep current date and time

Sync with computer time
 Computer date:
 Computer time:

Manual
 Date:[yyyy/mm/dd]
 Time:[hh:mm:ss]

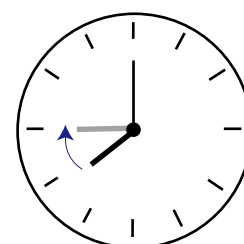
Automatic
 NTP server:
 Updating interval: ▼

Enable Daylight Saving Time : Select this option to enable daylight saving time (DST). During DST, the system clock moves one hour ahead. Note that to utilize this feature, please set the time zone for your Network Camera first. Then, the starting time and ending time of the DST is displayed upon selecting this option. To manually configure the daylight saving time rules, see Upload / Export Daylight Saving Time Configuration File on page 69 for details.

System Time

Enable Daylight Saving Time
Note: You can upload your Daylight Saving Time rules on [Maintenance](#) page or use the camera default value.

Starting Time:
 Ending Time:



Time zone : According to your local time zone, select one from the drop-down list.

Keep current date and time : Select this option to reserve the current date and time of the Network Camera. The Network Camera's internal real-time clock maintains the date and time even when the power of the system is turned off.

Sync with computer time : Select this option to synchronize the date and time of the Network Camera with the local computer. The read-only date and time of the PC is displayed as updated.

Manual : Adjust the date and time according to what is entered by the administrator. Note that the date and time format are [yyyy/mm/dd] and [hh:mm:ss].

Automatic : The Network Time Protocol is a protocol serves synchronize computer clocks by periodically querying an NTP Server.

NTP server : Assign the IP address or domain name of the time-server. Leaving the text box blank connects the Network Camera to the default time-servers.

Update interval : Select to update the time with the NTP server on hourly, daily, weekly, or monthly basis.

DI and DO

DI and DO

Digital input: The active state is ; the current state detected is **High**

Digital output: The active state is ; the current state detected is **Open**

Digital input : Select High or Low to define normal status of the digital input. The Network Camera will show whether the trigger is activated or not.

Digital output : Select Grounded or Open to define normal status of the digital output. The Network Camera will show whether the trigger is activated or not.

Security

This section explains how to enable password protection and create multiple accounts. It is composed of the following three columns: Root Password, Add User and Manage User.

Root Password

Root Password

Note: Leaving the root password field empty means the camera will not be protected by password.

Root Password:

Confirm root password:

The administrator account "root" is permanent and can not be deleted. Please note that if you want to add more accounts, you must apply a password for the root administrator first.

- 1** : Type the password identically in both text boxes.
- 2** : Click Save to enable password protection.
- 3** : A window will be prompted for authentication; type the correct user's name and password in related fields to access the Network Camera.

Add User

Add User

User name:

User password:

User type:

Administrator

Operator

Viewer

Administrators can add up to twenty separate user accounts.

- 1** : Type the new user's name and password.
- 2** : Select the desired security level. Click Add to take effect.

Access rights are sorted by user types. There are three kinds of user types. Only administrators can access the Configuration page. Operators and viewers can not access the configuration page. Though operators can not access the page, they are capable of using the url commands to get and set the value of parameters. For more information, see URL Commands for the Network Camera on page 72. Viewers can only monitor the main page.

Manage User

Manage User

User name:

User password:

User type:

Administrator

Operator

Viewer

Here you can change user's access rights or delete user accounts.

1 : Pull down the user list to find an account.

2 : Make necessary changes and then click Save or Delete to take effect.

Network

This section explains how to configure wired network connection for the Network Camera. It is composed of the following five columns: Network Type, HTTP, Two way audio, FTP and RTSP Streaming. When completed with the settings on this page, click Save to take effect.

Network Type

Network Type

LAN

Get IP address automatically
 Use fixed IP address

IP address	192.168.5.121
Subnet mask	255.255.255.0
Default router	192.168.5.1
Primary DNS	192.168.0.10
Secondary DNS	192.168.0.20
Primary WINS server	
Secondary WINS server	

Enable UPnP presentation
 Enable UPnP port forwarding

PPPoE

User name	
Password	
Confirm password	

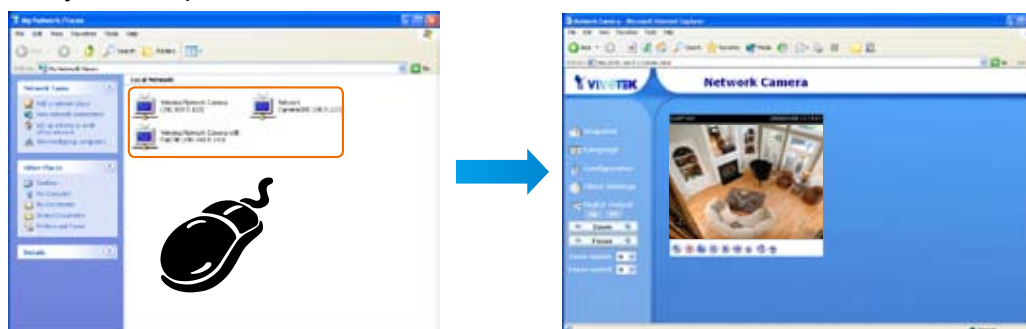
LAN

Select this option when the Network Camera is deployed in a local area network and is intended to be accessed by local computers.

Get IP address automatically : Select this option to obtain an available dynamic IP address assigned by a DHCP server each time the camera is connected to the local area network.

Use fixed IP address : Select this option to manually assign a static IP address to the Network Camera. See Internet connection with static IP on page 9 for details.

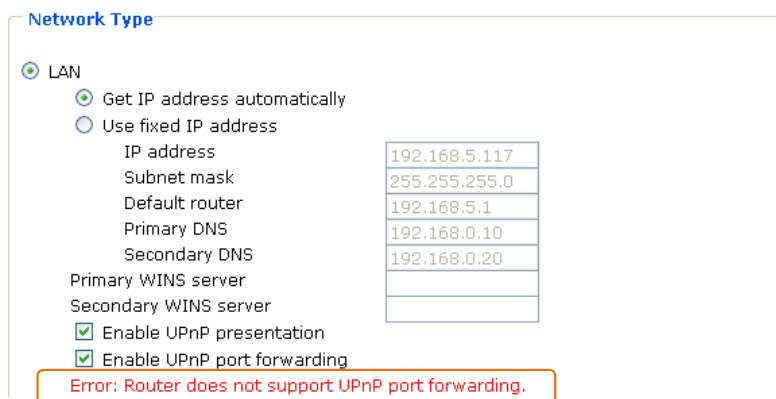
Enable UPnP presentation : Select this option to enable UPnP™ presentation for your Network Camera so that whenever a Network Camera is presented to the local area network, shortcuts of connected Network Cameras will show up at My Network Places. Currently, UPnP™ is supported by Windows XP or later. Note that to utilize this feature, please make sure the UPnP™ components is enabled on your computer.



Enable UPnP port forwarding : To access the Network Camera from the Internet, select this option to allow the Network Camera to open ports on the router automatically so that video streams can be sent out from a local area network. To utilize of this feature, make sure that your router supports UPnP™ and it is activated.

If the default ports are already used by other device connecting to the same router, the Network Camera will select other ports for the Network Camera.

If UPnP™ is not supported by your router, you will see the following message.



PPPoE

Select this option to configure your Network Camera to make it accessible from anywhere as long as there is an Internet connection. Note that to utilize this feature, it requires an account provided by your ISP. Follow the steps below to acquire your Network Camera's public IP address.

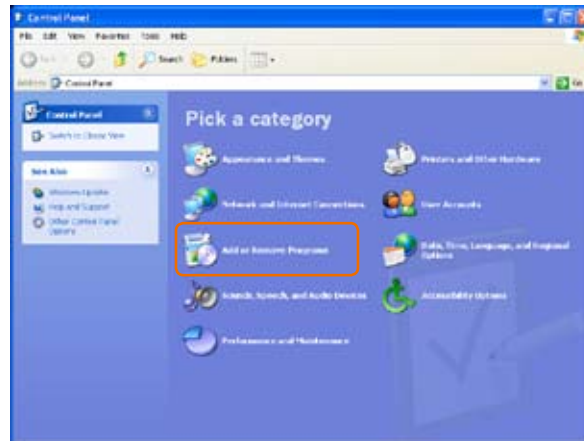
- 1** : Set up the Network Camera in a local area network.
- 2** : Go to Configuration > Application > Server Settings (see Server Settings on page 58) to add a new server – email or FTP server.
- 3** : Go to Configuration > Application > Media Settings (see Media Settings on page 56). Select System log so that you will receive a list of system log in TXT file format which contains the Network Camera's public IP address in your email or on the FTP server.
- 4** : Go to Configuration > Network > Network Type. Select PPPoE and enter the user name and password provided by your ISP. Click Save to take effect.
- 5** : The Network Camera starts to reboot.
- 6** : Disconnect the power source of the Network Camera; remove it from the local area network environment to the Internet.

NOTE :

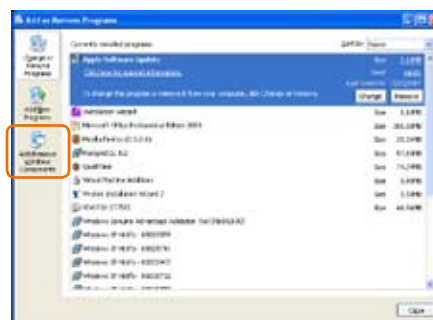
► Steps to enable UPnP™ user interface on your computer:

Note that you must log on to the computer as a system administrator to install the UPnP™ components.

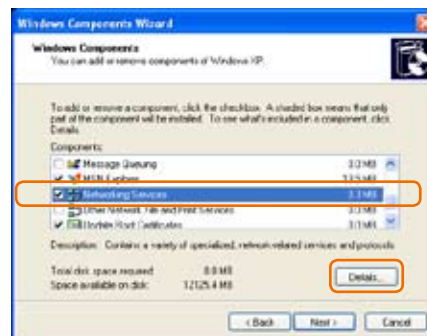
- 1** : Go to Start, click Control Panel, and then click Add or Remove Programs.



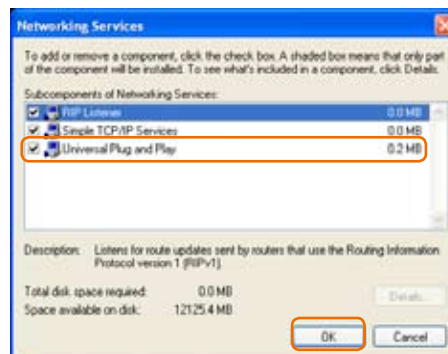
2 : In the Add or Remove Programs dialog box, click Add/Remove Windows Components.



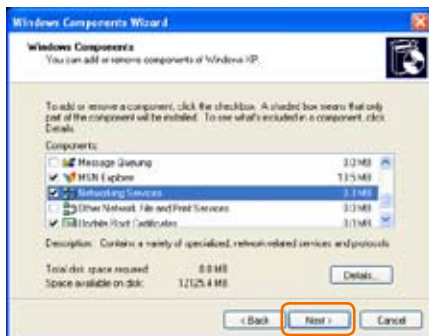
3 : In the Windows Components Wizard dialog box, select Networking Services and then click Details.



4 : In the Networking Services dialog box, select Universal Plug and Play and then click OK.



5 : Click Next in the following window.



6 : Click Finish. UPnP™ is enabled.

► How does UPnP™ work?

UPnP™ networking technology provides automatic IP configuration and dynamic discovery of devices added to a network. Services and capabilities offered by networked devices, such as printing and file sharing, are available among each other without bothersome network configuration. In the case of Network Cameras, you will see Network Camera shortcuts at My Network Places.

► Enabling UPnP port forwarding allows the Network Camera to open secondary HTTP port on the router, not HTTP port, meaning that you have to add the secondary HTTP port number behind the Network Camera’s public address in order to access the Network Camera from the Internet. For example, when the HTTP port is set to 80 and the secondary HTTP port is set to 8080, refer to the list below for the Network Camera’s IP address.

From the Internet	In a local area network
http://203.67.124.123:8080	http://192.168.4.160 or http://192.168.4.160:8080

► If the PPPoE settings are incorrectly configured or the Internet access is not working, restore the Network Camera to factory default; see Restore on page 68 for details. After the Network Camera is reset to factory default, it is accessible in a local area network.

HTTP

HTTP

Authentication: basic ▼

HTTP port: 80

Secondary HTTP port: 8080

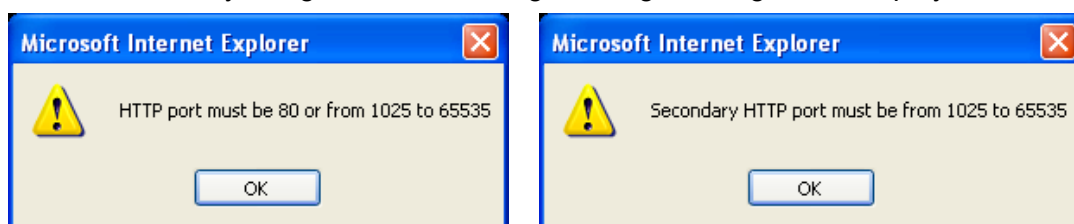
Access name for stream 1: video.mjpg

Access name for stream 2: video2.mjpg

Authentication : Depending on your network security requirements, the Network Camera provides two types of security settings for a HTTP transaction: basic and digest. If basic authentication is selected, the password is sent in plain text format; there can be potential risks of being intercepted. If digest authentication is selected, user credentials are encrypted in MD5 algorithm and thus provide better protection against unauthorized accesses.

HTTP port / Secondary HTTP port : By default, the HTTP port is set to 80 and the secondary HTTP

port is set to 8080. Also, they can be assigned with another port number between 1025 and 65535. If the ports are incorrectly assigned, the following warning messages are displayed:



To access the Network Camera within a local area network, both HTTP port and secondary HTTP port can be used to access the Network Camera. For example, when the HTTP port is set to 80 and the secondary HTTP port is set to 8080, refer to the list below for the Network Camera's IP address.

In a local area network

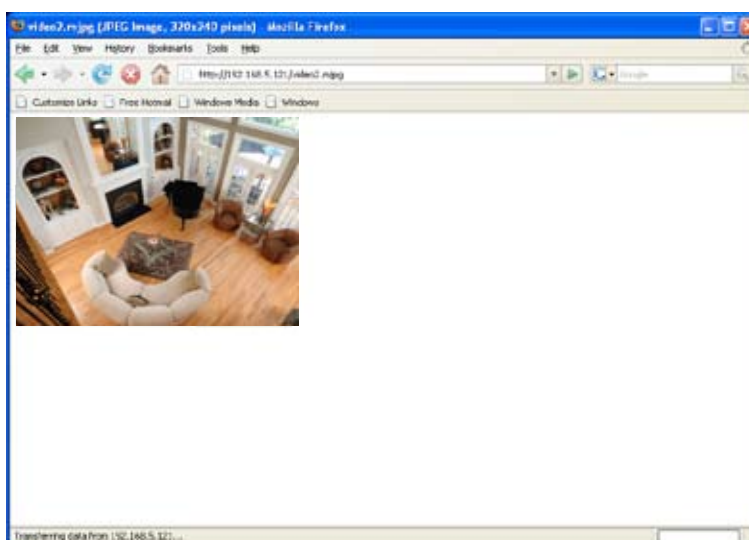
http://192.168.4.160 or
http://192.168.4.160:8080

Access name for stream 1 / Access name for stream 2 : The access name is used to differentiate the streaming source. When using Mozilla Firefox or Netscape to access the Network Camera, and the video mode is set to JPEG, users will receive continuous JPEG pictures. This technology, known as "server push", allows the Network Camera to feed live pictures to *Mozilla Firefox* and *Netscape*.

Use `http://<ip address>:<http port>/<access name for stream1 or stream2>` to make connection.

For example, when the access name for stream 1 is set to video.mjpg:

- 1** : Launch Mozilla Firefox or Netscape.
- 2** : Type the URL command in the address field. Press Enter.
- 3** : The JPEG images will be displayed in your web browser.



NOTE :

- To utilize the HTTP authentication, make sure that you have set a password for the Network Camera first; see Security on page 25 for details.

► Microsoft® Internet Explorer does not support server push technology; therefore, using `http://<ip address>:<http port>/<access name for stream1 or stream2>` will fail to access the Network Camera.

Two way audio

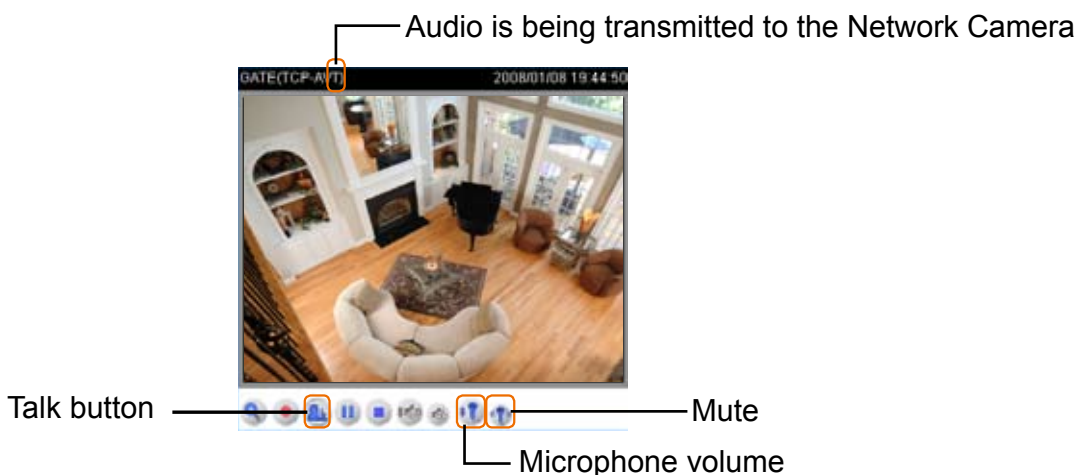
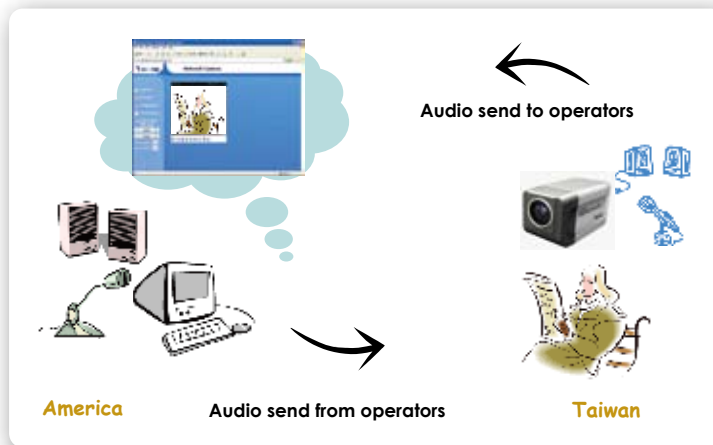
Two way audio

Two way audio port

By default, the two way audio port is set to 5060. Also, it can be assigned with another port number between 1025 and 65535.

The Network Camera supports two way audio communication so that operators can transmit and receive audio simultaneously. By using the Network Camera's built-in microphone and an external speaker, you can communicate with people around the Network Camera.

Note that as JPEG only transmits a series of JPEG images to the client, to utilize this feature, make sure the video mode is set to "MPEG-4" and the media option is set to "Video and Audio".



Click to enable audio transmission to the Network Camera; click to adjust the volume of microphone; click to turn off the audio. To stop talking, click again.

FTP

FTP

FTP port

The FTP server allows the Network Camera to utilize VIVOTEK Installation Wizard 2 to upgrade firmware. By default, the FTP port is set to 21. Also, it can be assigned with another port number between 1025 and 65535.

RTSP Streaming

RTSP Streaming

Authentication:

Access name for stream 1

Access name for stream 2

RTSP port

RTP port for video

RTCP port for video

RTP port for audio

RTCP port for audio

Multicast settings for stream 1

Always multicast

Multicast group address

Multicast video port

Multicast RTCP video port

Multicast audio port

Multicast RTCP audio port

Multicast TTL [1~255]

Multicast settings for stream 2

Always multicast

Multicast group address

Multicast video port

Multicast RTCP video port

Multicast audio port

Multicast RTCP audio port

Multicast TTL [1~255]

Authentication : Depending on your network security requirements, the Network Camera provides three types of security settings for streaming via RTSP protocol: disable, basic and digest. If basic authentication is selected, the password is sent in plain text format; there can be potential risks of being intercepted. If digest authentication is selected, user credentials are encrypted in MD5 algorithm and thus provide better protection against unauthorized accesses. The accessibility of the RTSP streaming for the three authentication modes are listed in the following table.

	Quick Time player	Real Player	VLC media player	mpegable Player	pvPlayer
Disable	O	O	O	O	O
Basic	O	O	X	X	X
Digest	O	X	X	X	X

O indicates that the authentication mode is supported by the RTSP player.

X indicates that the authentication mode is NOT supported by the RTSP player.

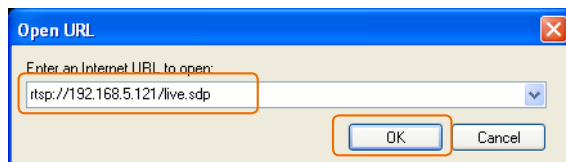
Access name for stream 1 / Access name for stream 2 : The access name is used to differentiate the streaming source. When using a RTSP player to access the Network Camera, and the video mode is set to MPEG-4, use the following RTSP URL command to request a transmission of streaming data.

rtsp://<ip address>:<rtsp port>/<access name for stream1 or stream2>

For example, when the access name for stream 1 is set to live.sdp:

- 1 : Launch a RTSP player.
- 2 : Choose File > Open URL. This opens the URL dialog box.
- 3 : Type the URL command in the text box.

For example:



- 4 : The live video will be displayed in your player.



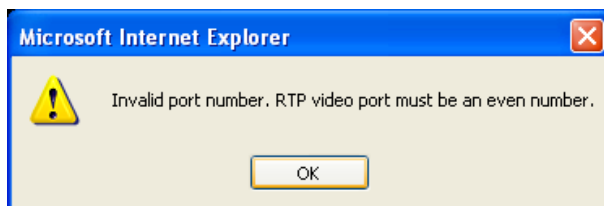
RTSP port /RTP port for video, audio/ RTCP port for video, audio : The RTSP (Real-Time Streaming Protocol) controls the delivery of streaming media. By default, the port number is set to 554.

The RTP (Real-time Transport Protocol) is used to deliver video and audio data to the clients. By default, the RTP port for video is set to 5556 and the RTP port for audio is set to 5558.

The RTCP (Real-time Transport Control Protocol) allows the Network Camera to transmit the data by monitoring Internet traffic volume. By default, the RTCP port for video is set to 5557 and the RTCP port for audio is set to 5559.

The five ports can be changed between 1025 and 65535. The RTP port must be an even number and the RTCP port is RTP port number plus one, and thus always be odd. When the RTP port changes, the RTCP port will change accordingly.

If the RTP ports are incorrectly assigned, the following warning message is displayed:

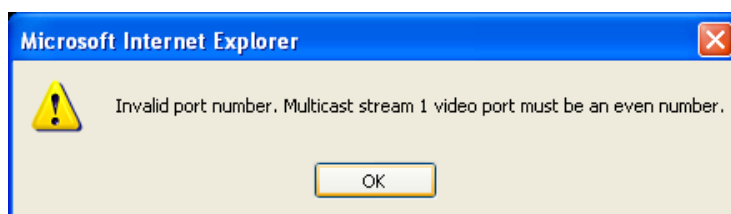


Multicast settings for stream 1 / Multicast settings for stream 2 : Select the Always multicast to enable multicast for stream 1 or stream 2. Unicast video transmission delivers a stream through point-to-point transmission; multicast, on the other hand, sends a stream to the multicast group

address and allows multiple clients to acquire the stream by requesting a copy from the Multicast group address.

The five ports can be changed between 1025 and 65535. The multicast RTP port must be an even number and the multicast RTCP port is multicast RTP port number plus one, and thus always be odd. When the multicast RTP port changes, the multicast RTCP port will change accordingly.

If the multicast RTP video ports are incorrectly assigned, the following warning message is displayed:



Multicast TTL [1~255] : The multicast TTL (Time to live) is the value that tells the router the range a packet can be forwarded.

NOTE :

- ▶ *To utilize the RTSP streaming authentication, make sure that you have set a password for the Network Camera first; see Security on page 25 for details.*

DDNS

This section explains how to configure dynamic domain name service for the Network Camera. DDNS is a service that allows your Network Camera, especially when assigned with a dynamic IP address, to have a fixed host and domain name.

DDNS: Dynamic domain name service

Register

Host name

Email

Key

Confirm key

To apply for a domain name for the camera, or to modify the previously registered information, fill in the following fields and then click "Register".

DDNS Registration Result

Upon successful registration, you can click [copy](#) to automatically upload relevant information to the DDNS form or you can manually fill it in. Then, click "Save" to save new settings.

Enable DDNS : Select this option to enable the DDNS setting.

Provider : Select a DDNS provider of your choice from the Provider drop-down list.

VIVOTEK offers safe100, a free dynamic domain name service to VIVOTEK customers. It is recommended that you register with the safe100 to access the Network Camera from the Internet. Additionally, we offer other DDNS providers, such as Dyndns.org(Dynamic), Dyndns.org(Custom), TZO.com, DHS.org, CustomSafe100, dyn-interfree.it. Note that to utilize this feature, please apply a dynamic domain account first.

■ Safe100.net :

- 1** : In the DDNS column, select Safe100 from the Provider drop-down list. Click Agree when you agree with the terms of the Service Agreement.
- 2** : In the Register column, fill in the Host name, Email, Key and Confirm Key and then click Register. After a host name has been successfully created, you will see a successful message in the DDNS Registration Result column, indicating that you have successfully applied a domain name on Safe100.net.

Register

Host name

Email

Key

Confirm key

To apply for a domain name for the camera, or to modify the previously registered information, fill in the following fields and then click "Register".

DDNS Registration Result

[Register] Successfully. Your account information has been mailed to registered e-mail address.

Upon successful registration, you can click [copy](#) to automatically upload relevant information to the DDNS form or you can manually fill it in. Then, click "Save" to save new settings.

- 3** : Click Copy and all the registered information will be uploaded to the corresponding fields in the DDNS column.
- 4** : Select Enable DDNS and then click Save to take effect.

■ CustomSafe100 :

VIVOTEK offers documents to establish CustomSafe100 DDNS server for distributors and system integrators. You can use CustomSafe100 to register a dynamic domain name if your distributor or system integrators offer such services.

- 1** : In the DDNS column, select CustomSafe100 from the Provider drop-down list.
- 2** : In the Register column, fill in the Host name, Email, Key and Confirm Key; then click Register. After a host name has been successfully created, you will see a successful message in the DDNS Registration Result column, indicating that you have successfully registered a domain name on CustomSafe100.

Register

Host name

Email

Key

Confirm key

To apply for a domain name for the camera, or to modify the previously registered information, fill in the following fields and then click "Register".

DDNS Registration Result

[Register] Successfully. Your account information has been mailed to registered e-mail address.

Upon successful registration, you can click [copy](#) to automatically upload relevant information to the DDNS form or you can manually fill it in. Then, click "Save" to save new settings.

- 3** : Click Copy and all the registered information will be uploaded to the corresponding fields in the DDNS column.
- 4** : Select Enable DDNS and then click Save to take effect.

Refer to the following links to apply a dynamic domain account when selecting other DDNS providers.

- DynDNS.org(Dynamic) / DynDNS.org(Custom) : visit <http://www.dyndns.com/>
- TZO.com : visit <http://www.tzo.com/>
- DHS.org : visit <http://www.dhs.org/>
- dyn-interfree.it : visit <http://dyn-interfree.it/>



Dyndns.org(Dynamic) / DynDNS.org(Custom)



TZO.com



DHS.org



dyn-interfree.it

Forget key : Click this button if you forget the key of Safe100 or CustomSafe100. Your account information will be sent to your email address.

[Register](#)

Host name

Email

Key

Confirm key

To apply for a domain name for the camera, or to modify the previously registered information, fill in the following fields and then click "Register".

DDNS Registration Result

[Register] Successfully. Your account information has been mailed to registered e-mail address.

Upon successful registration, you can click [copy](#) to automatically upload relevant information to the DDNS form or you can manually fill it in. Then, click "Save" to save new settings.

Access List

This section explains how to control the access permission by checking the client PC's IP addresses. It is composed of the following four columns: Allowed list, Denied list, Delete allowed list and Delete denied list

Allowed list / Denied list

Allowed list

Starting IP address

Ending IP address

Delete allowed list

Allowed list

Denied list

Starting IP address

Ending IP address

Delete denied list

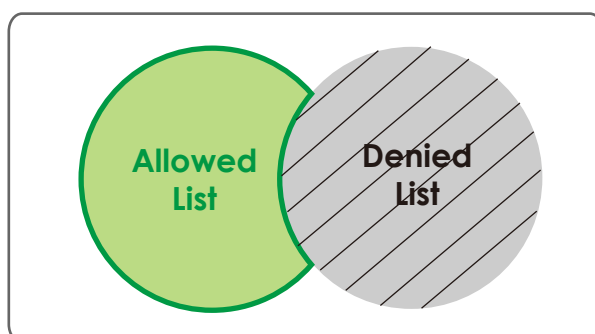
Denied list

There are two lists for permission control: Allowed list and Denied list. Only those clients whose IP addresses are in the Allowed list and not in the Denied list can access the Network Camera.

- 1** : In the Allowed list or Denied list column, type the starting IP address and ending IP address in the text boxes. A total of ten lists can be configured for both columns.
- 2** : Click Add to take effect.

NOTE :

► For example, when the range of allowed list is set from 1.1.1.0 to 192.255.255.255 and the range of denied list is set from 1.1.1.0 to 170.255.255.255, Only users' IP located between 171.0.0.0 and 192.255.255.255 can access the Network Camera.



Delete allowed list / Delete denied list

- 1** : In the Delete allowed list or Delete denied list, select a list from the drop-down list.
- 2** : Click Delete to take effect.

Audio and Video

This section explains how to configure audio and video performances of the Network Camera. It is composed of the following two columns: Video settings and Audio settings.

Video settings

Video settings

Video title:

Color: Color ▾

Power line frequency: 60 Hz ▾

Video orientation: Flip Mirror

Overlay title and time stamp on video and snapshot.

Image Settings Privacy Mask CCD Settings

Video quality settings for stream 1

Mode: MPEG-4 ▾

Frame size: 320x240 ▾

Maximum frame rate: 30 fps ▾

Intra frame period: 1 S ▾

Video quality

Constant bit rate: 512 Kbps ▾

Fixed quality: Good ▾

Video quality settings for stream 2

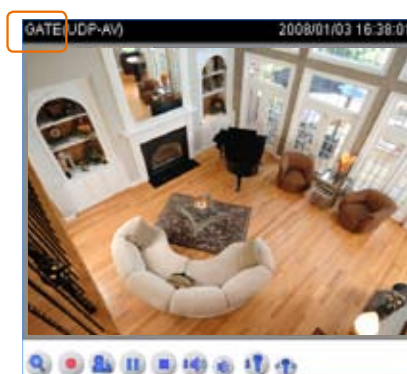
Mode: JPEG ▾

Frame size: 320x240 ▾

Maximum frame rate: 30 fps ▾

Video quality: Good ▾

Video title : Enter a name that will be displayed on the title bar of the live video.



Color : Select to display colorful or black/white video streams.

Power line frequency : Set the power line frequency in consistent with local utility settings to eliminate uncomfortable image flickering associated with fluorescent lights. Note that after the power line frequency is changed, it is required to disconnect and reconnect the power cord of the Network Camera in order for the new setting to take effect.

Video orientation :

■ Flip

Vertically reflect the display of the live video.

■ Mirror

Horizontally reflect the display of the live video.

Select both options if the Network Camera is installed upside-down (ex. on the ceiling) to correct the image orientation.

Overlay title and time stamp on video : Select this option to place the video title and time on video streams. Note that when the frame size is set to 176 x 144, only time will be stamped on video streams.

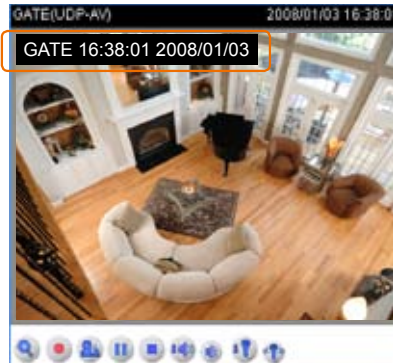


Image Settings

Click Image settings to open the Image Settings page. In this page, you can tune "White Balance", "Brightness" and "Sharpness" for video compensation. When completed with the settings on this page, click Save to take effect and click Close to quit this page.



White Balance :

- Auto

The Network Camera automatically adjusts the color temperature of light in response to different light sources. The white balance setting defaults to Auto and works well in most situations.

- Keep current value

Manually set the white balance to compensate for the ambient lighting conditions.

1 : Set the White balance to Auto.

2 : Place a sheet of white paper in front of the lens; then allow the Network Camera to adjust the color temperature automatically.

3 : Select Keep current value to confirm the setting while the white balance is being measured.

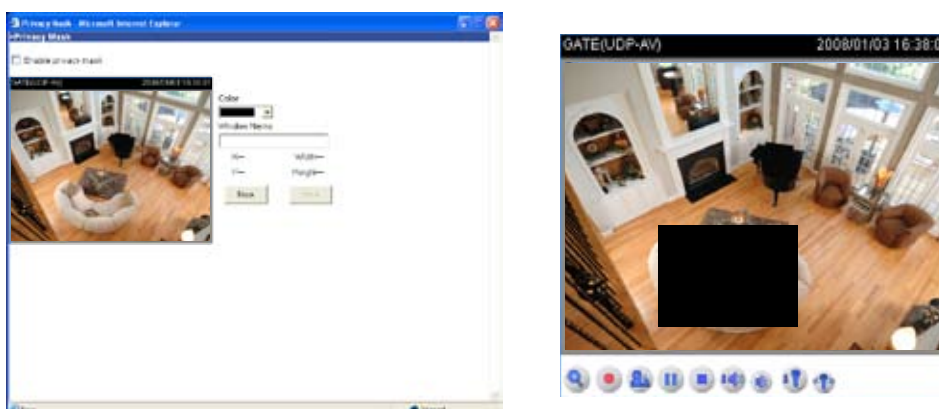
4 : Click Save to take effect.

Brightness : Adjust the image brightness in fifteen steps from -7 (least bright) ~ +7 (brightest). By default, the brightness is set to 0.

Sharpness : Adjust the image sharpness in fifteen steps from -7 (least sharp) ~ +7 (sharpest). By default, the sharpness is set to 0.

Privacy Mask

Click Privacy Mask to open the Privacy Mask page. In this page, you can block out sensitive area so that it won't be seen by anyone accessing the Network Camera. A total of five privacy mask windows can be configured.



Fifteen colors can be applied to the privacy mask. To enable privacy mask, follow the steps below.

1 : Click New to add a new privacy mask window.

2 : In the Window Name text box, enter a descriptive name for the privacy mask window.

- To move and resize the window, drag-drop the window.

- To delete window, click **X** at top right of the window.

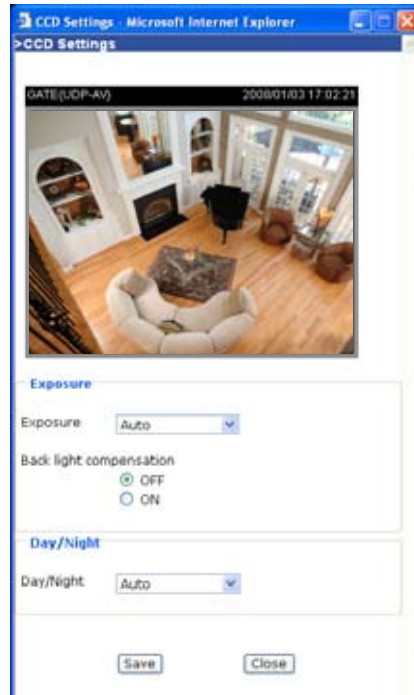
3 : Choose a color for the privacy window.

4 : Click Save to take effect.

5 : Select Enable privacy mask and the privacy mask window is activated.

CCD Settings

Click CCD settings to open the CCD Settings page. In this page, you can set the exposure time and day/night function. When completed with the settings on this page, click Save to take effect and click Close to quit this page.



Exposure :

■ Auto

The Network Camera automatically adjusts the iris and gain, but fixed shutter speed (1/30 s) in response to different environment. The exposure setting defaults to Auto and works well in most situations. Depending on ambient lighting conditions, select either to turn on the back light compensation or not; this feature is only accessible in auto exposure mode.

■ Shutter Priority

Select this option to adjust the desired shutter speed and allow the Network Camera to select an appropriate iris and gain to obtain the correct exposure. Adjust the shutter speed in sixteen steps from 1/2 second (slowest) ~ 1/10000 second (fastest).

■ Iris Priority

Select this option to adjust the desired iris and allow the Network Camera to select an appropriate shutter speed and gain to obtain the correct exposure. Adjust the iris in seventeen steps from F1.4 (largest size of lens aperture opening) ~ F22 (smallest size of lens aperture opening).

■ Manual

Select this option to adjust the desired shutter speed, iris and gain. Adjust the shutter speeds in eleven steps from 1/60 second (slowest) ~ 1/10000 second (fastest); the iris in seventeen steps from F1.4 (largest size of lens aperture opening) ~ F22 (smallest size of lens aperture opening) and the gain in fifteen steps from 0db (lowest noise level) ~ 28db (highest noise level).

Day/Night :

■ Auto

The Network Camera automatically switches between day mode and night mode by judging the level of ambient light. This mode is accessible only when the exposure mode is set to Auto.

■ Day mode

The Network Camera switches on the infrared cut filter at all times to block the infrared light from reaching the sensor so that the colors are not distorted.

■ Night mode

The Network Camera switches off the infrared cut filter to allow the infrared light to pass through. This helps the Network Camera to see more, especially in low light conditions.

■ Schedule mode

The Network Camera switches between day mode and night mode based on specified schedule. Enter the starting time and ending time for the day mode. Note that the time format is [hh:mm] and is expressed in 24-hour clock time. By default, the starting time and ending time of day mode are set to 07:00 and 18:00.

Video quality settings for stream 1 / stream 2 : Set two streams for the Network Camera for different purposes. For example, set the Network Camera to a smaller frame size and a lower bit rate for viewing on mobile phones. Or, set the Network Camera to a larger video size and a higher bit rate for viewing on web browsers.

■ Mode

The Network Camera offers two choices of video compression standards for real-time viewing: MPEG-4 and Motion JPEG.

If MPEG-4 is selected, it is streamed in RTSP protocol. There are four dependent parameters provided in MPEG-4 mode for video performance adjustment.

Video quality settings for stream 1

Mode:	MPEG-4
Frame size:	320x240
Maximum frame rate:	30 fps
Intra frame period:	1 S
Video quality	
<input type="radio"/> Constant bit rate:	512 Kbps
<input checked="" type="radio"/> Fixed quality:	Good

■ Frame size

Select the video size. Note that a larger frame size takes up more bandwidth. The frame sizes are selectable in the following resolutions: 176 x 144, 320 x 240 and 640 x 480.

■ Maximum frame rate

This limits the maximal refresh frame rate per second. Set the frame rate higher for a smoother video quality.

If the power line frequency is set to 50Hz, the frame rates are selectable at the following rates: 1fps, 2fps, 3fps, 5fps, 8fps, 10fps, 15fps, 20fps and 25fps. If the power line frequency is set to 60Hz, the frame rates are selectable at the following rates: 1fps, 2fps, 3fps, 5fps, 8fps, 10fps, 15fps, 20fps, 25fps and 30fps.

■ Intra frame period

Determine how often to plant an I frame. The shorter the duration, the more likely you will get a better video quality, but at the cost of higher network bandwidth consumption. Select the intra frame period from the following duration: 1/4 second, 1/2 second, 1 second, 2 seconds, 3 seconds and 4 seconds.

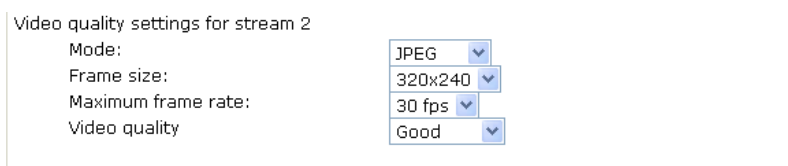
■ Video quality

A complex scene generally produces larger file size, meaning that higher bandwidth will

be needed for data transmission. Therefore, if Constant bit rate is selected, the bandwidth utilization is fixed at a selected level, resulting in mutable video quality performances. The bit rates are selectable at the following rates: 20Kbps, 30Kbps, 40Kbps, 50Kbps, 64Kbps, 128Kbps, 256Kbps, 512Kbps, 768Kbps, 1Mbps, 2Mbps, 3Mbps and 4Mbps.

On the other hand, if Fixed quality is selected, all frames are transmitted with the same quality; bandwidth utilization is therefore unpredictable. The video qualities are selectable at the following settings: Medium, Standard, Good, Detailed and Excellent.

If JPEG mode is selected, the Network Camera continuously sends JPEG images to the clients, producing dynamic effects similar to movies. Every single JPEG image transmitted guarantees the same image quality, which in turn comes at the expense of variable bandwidth usage. And because the media contents are a combination of JPEG images, no audio data is transmitted to the clients.



■ Frame size

Select the video size. Note that a larger frame size takes up more bandwidth. The frame sizes are selectable in the following resolutions: 176 x 144, 320 x 240 and 640 x 480.

■ Maximum frame rate

This limits the maximal refresh frame rate per second. Set the frame rate higher for a smoother video quality.

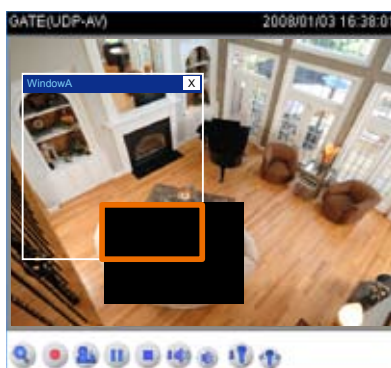
If the power line frequency is set to 50Hz, the frame rates are selectable at the following rates: 1fps, 2fps, 3fps, 5fps, 8fps, 10fps, 15fps, 20fps and 25fps. If the power line frequency is set to 60Hz, the frame rates are selectable at the following rates: 1fps, 2fps, 3fps, 5fps, 8fps, 10fps, 15fps, 20fps, 25fps and 30fps.

■ Video quality

The video qualities are selectable at the following settings: Medium, Standard, Good, Detailed and Excellent.

NOTE :

- ▶ *Before creating a privacy mask window, make sure the zoom operation is not activated.*
- ▶ *In a privacy mask window, motion detection will not take effect.*



Audio Settings

Audio Settings

Mute

Internal microphone input gain:

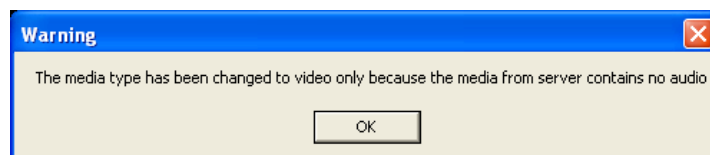
External microphone input: 0db 20db

Audio type: AAC GSM-AMR

AAC bit rate:

GSM-AMR bit rate:

Mute : Select this option to disable audio transmission from the Network Camera to all clients. Note that if mute mode is turned on, no audio data will be transmitted to all clients even though the audio transmission is enabled in the Client Settings page. In that case, the following message is displayed.



Internal microphone input gain : Select the gain of the internal audio input according to ambient conditions. Adjust the gain in thirty three steps from +12 db (most sensitive) ~ -34.5 db (least sensitive).

External microphone input : There are two options for external microphone input gain: 0db and 20db.

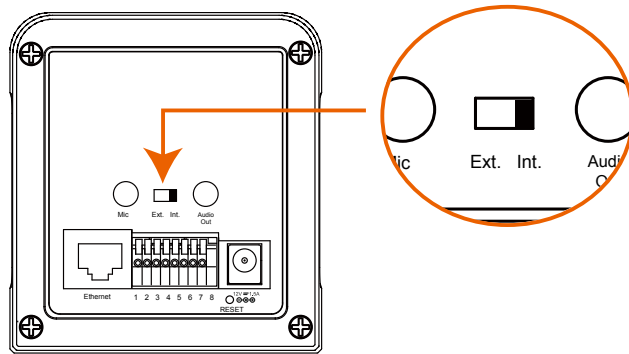
Audio type : Select audio codec AAC or GSM-AMR and the bit rate.

- AAC targets at performing good sound quality at the cost of higher bandwidth consumption. The bit rates are selectable at the following rates: 16Kbps, 32Kbps, 48Kbps, 64Kbps, 96Kbps and 128Kbps.
- GSM-ARM is designed to optimize speech quality and requires less bandwidth. The bit rates are selectable at the following rates: 4.75Kbps, 5.15Kbps, 5.90Kbps, 6.7Kbps, 7.4Kbps, 7.95Kbps, 10.2Kbps and 12.2Kbps.

NOTE :

► *The Network Camera offers two inputs to capture audio - internal microphone or external microphone. You can use the internal microphone to capture audio around the Network*

Camera. Alternatively, you can use external microphone to capture audio. The internal/external microphone switch is located on the back panel of the Network Camera.



Motion Detection

This section explains how to configure the Network Camera to enable motion detection. A total of three motion detection windows can be configured.

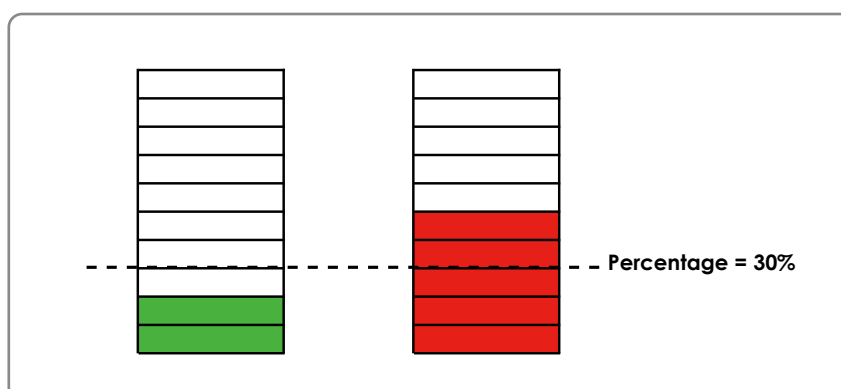


To enable motion detection, follow the steps below.

- 1** : Click New to add a new motion detection window.
- 2** : In the Window Name text box, enter a descriptive name for the motion detection window.
 - To move and resize the window, drag-drop the window.
 - To delete window, click **X** at top right of the window.
- 3** : Define the sensitivity to moving objects and the space ratio of all alerted pixels by moving the Sensitivity and Percentage slider bar.
- 4** : Click Save to take effect.
- 5** : Select Enable motion detection and the motion detection is activated.

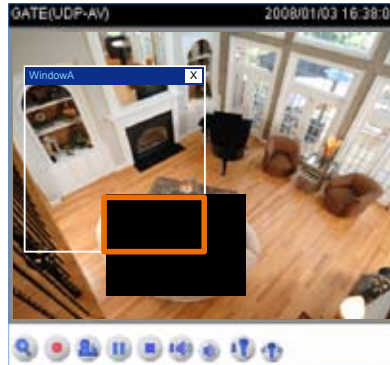
The Percentage Indicator will rise or fall depending on the image variation. When motions are detected by the Network Camera and are judged to exceed the defined threshold, a red bar rises. Meanwhile, the motion detection window will be outlined in red. Photos or videos can be captured instantly and configured to send to the remote server (Email, FTP) by utilizing this feature as a trigger source. For more information on how to plot an event, see Application on page 56.

A green bar indicates that even though motions are detected, the event will not be triggered because the image variations are still falling under the defined threshold.

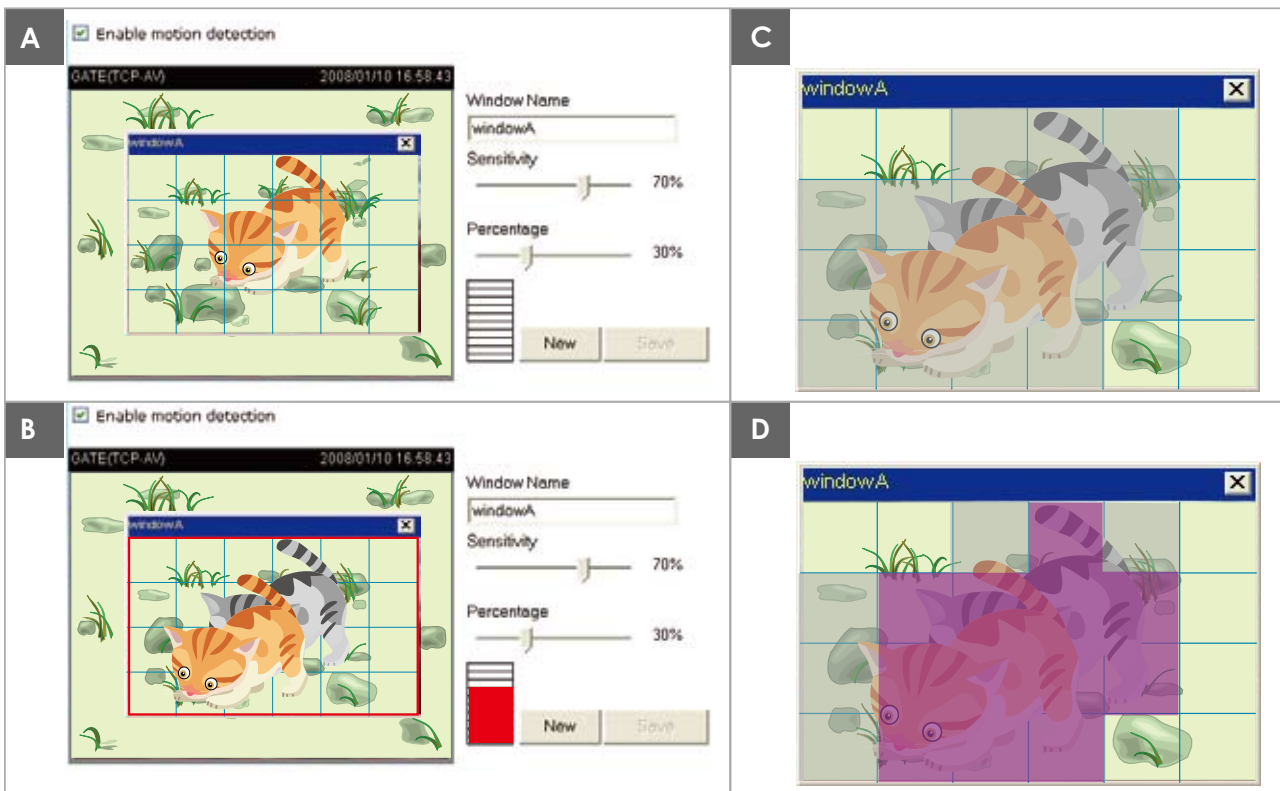


NOTE :

► In a privacy mask window, motion detection will not take effect.



► How does motion detection work?



There are two parameters for setting the motion detection: Sensitivity and Percentage. In the illustration above, frame A and frame B are two sequential images. Pixel differences between the two frames are detected and highlighted in gray (frame C), and will be compared with the sensitivity setting. Sensitivity is a value that expresses the sensitivity to moving objects. Higher sensitivity settings are expected to sense a slight movement while smaller sensitivity settings tend to neglect it. When the sensitivity is set to 70%, the Network Camera defines the pixels in the purple areas as “alerted pixels” (frame D).

Percentage is a value that expresses the proportion of “alerted pixels” to all pixels in the motion detection window. In this case, 50% of pixels are identified as “alerted pixels”. When the percentage is set to 30%, the motions are judged to exceed the defined threshold; therefore, the

motion window will be outlined in red.

For applications that require higher security management, it is suggested to set higher sensitivity settings and smaller percentage values.

Camera Control

This section explains how to control the Network Camera's Pan/Tilt operation by connecting with a PTZ scanner.

RS-485 Settings

RS485 Settings

Enable PTZ Operation

Camera ID:

PTZ driver:

Port settings:

Baud rate:

Data bits:

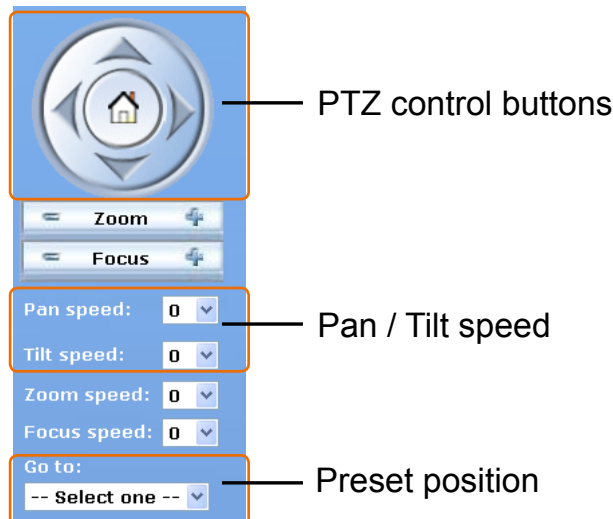
Stop bits:

Parity bit:

Enable PTZ Operation : Select this option to enable PTZ operation.

To utilize this feature, please connect the Network Camera with a PTZ scanner via RS485 interface first. VIVOTEK offers three PTZ drivers: DynaDome/SmartDOME, Lilin PIH-7x00 and Pelco D protocol. If none of the above PTZ drivers is supported by your PTZ scanner, please select Custom camera.

- 1** : Refer to your PTZ scanner, set the Camera ID, PTZ driver, Port settings.
- 2** : Select Enable PTZ Operation and then click Save to take effect.
- 3** : The PTZ control buttons will be displayed in the main page.





PTZ control buttons :

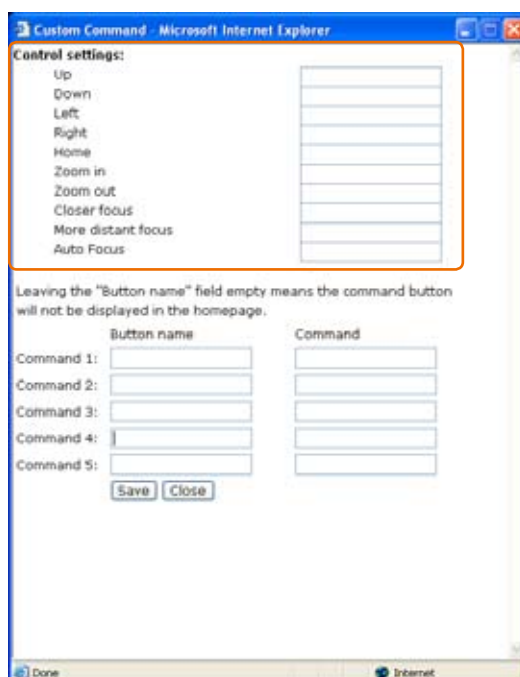
- ▲ : Move the Network Camera up.
- ▼ : Move the Network Camera down.
- ◀ : Move the Network Camera left.
- ▶ : Move the Network Camera right.

 : Return the Network Camera to home position.

Pan / Tilt speed : Adjust the speed of pan and tilt.

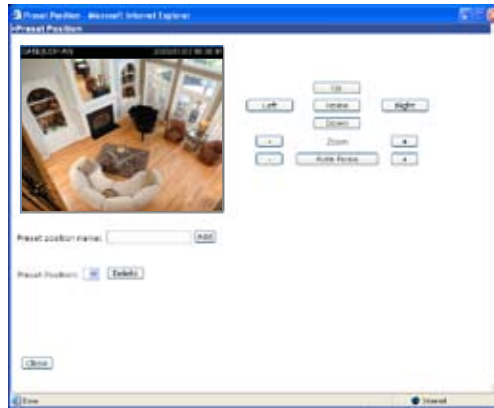
Pan speed	Tilt speed	
-5	-5	Slower   Faster
-4	-4	
-3	-3	
-2	-2	
-1	-1	
0	0	
1	1	
2	2	
3	3	
4	4	
5	5	

Preset position : Select a preset position from the Go to drop-down list. Note that the preset position field is empty by default. For more information on how to set preset positions, see Preset Position on page 53.



Preset Position

Click Preset Position to open the Preset Position page. In this page, you can set the preset position for the Network Camera. A total of twenty preset positions can be configured. Follow the steps below to set a preset position.



To set a preset position, follow the steps below.

- 1** : Adjust the Network Camera to a desired position using the buttons on the right side of the window.
- 2** : In the Preset position name text box, enter a descriptive name for the preset position. The preset position name allows up to forty characters.
- 3** : Click Add to take effect. The preset position name will appear in the Preset Positions drop-down list. To remove a preset position from the list, select a preset position name from the Preset Positions drop-down list and then click Delete.

Custom Command

Click Custom Command to open the Custom Command page. In this page, you can set addition command buttons for controlling the PTZ scanner. A total of five command buttons can be configured.



To add a new control button, follow the steps below.

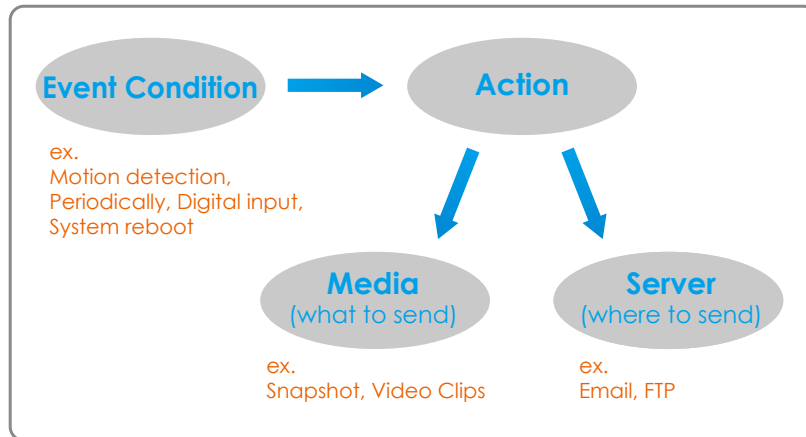
- 1** : In the Button name text box, enter the descriptive name for the control button.
- 2** : Refer to the PTZ scanner and enter the command.
- 3** : Click Save to take effect and click Close to quit this page.
- 4** : The new custom command button will be displayed in the main page.

**NOTE :**

► If Custom camera is selected as the PTZ driver, the PTZ control buttons will not take effect. Please go to Configuration > Camera control > Custom Command to set the commands in the Control settings session. Please refer to the user's manual of the PTZ scanner for the command.

Application

This section explains how to configure the Network Camera to react in response to particular situations. A typical application is that when a motion is detected, the Network Camera sends buffered images to a FTP server or via e-mail as notifications.

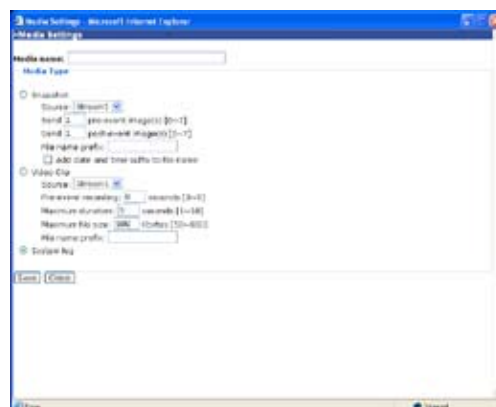
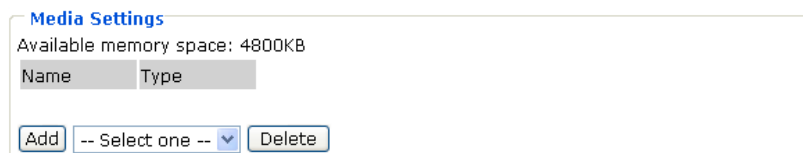


In the illustration above, an event can be triggered by many sources, such as motion detection or external digital input devices. When an event is triggered, you can specify what kind of action will be performed. You can configure the Network Camera to send snapshots or videos to your email address or FTP site.

To start plotting an event, it is suggested to configure server and media columns first so that the Network Camera will know what action shall be performed when a trigger is activated.

Media Settings

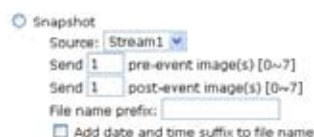
In the Media column, click Add to open the media setting page. In this page, you can specify what kind of media to send when a trigger is activated. A total of five media settings can be configured.



Media name : Enter a descriptive name for the media setting.

Media Type : There are three choices of media types available:

Snapshot : Select to send snapshots when a trigger is activated.



■ Source

Select to take snapshots from stream 1 or stream 2.

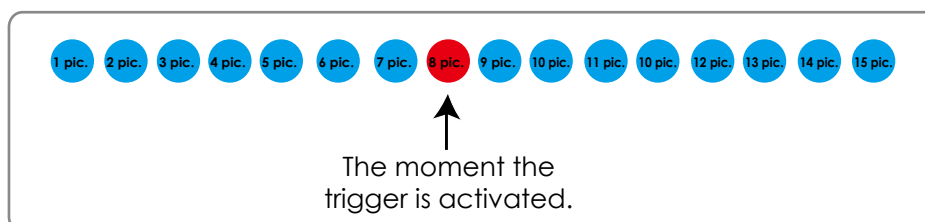
■ Send pre-event images

The Network Camera has a buffer area; it temporarily holds data up to a certain limit. Specify to capture how many images before a trigger is activated. Up to seven images can be generated.

■ Send post-event images

Specify to capture how many images after a trigger is activated. Up to seven images can be generated.

For example, if both the Send pre-event images and Send post-event images are set to seven, a total of fifteen images are generated after a trigger is activated.

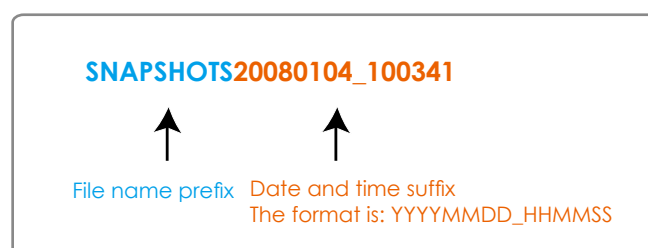


■ File Name Prefix

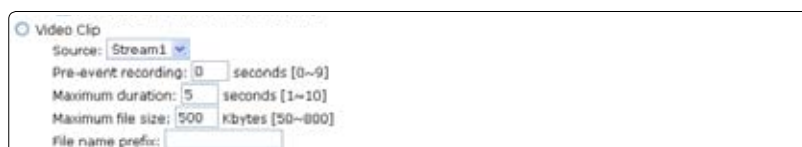
Enter the text that will be put in front of the file name.

■ Add date and time suffix to the file name

Select this option to add date and time to the file name suffix.



Video Clip : Select to send video clips when a trigger is activated.



■ Source

Select to record video clips from stream 1 or stream 2.

■ Pre-event recording

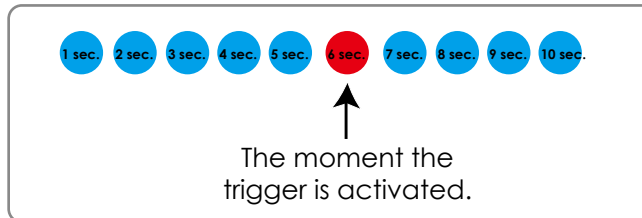
The Network Camera has a buffer area; it temporarily holds data up to a certain limit. Specify to

record video clips for how many seconds before a trigger is activated. Up to nine seconds can be set.

■ Maximum duration

Specify the maximal recording duration in seconds. Up to ten seconds can be set.

For example, if the Pre-event recording is set to five seconds and the Maximum duration is set to ten seconds, the Network Camera continues to record for another four seconds after a trigger is activated.

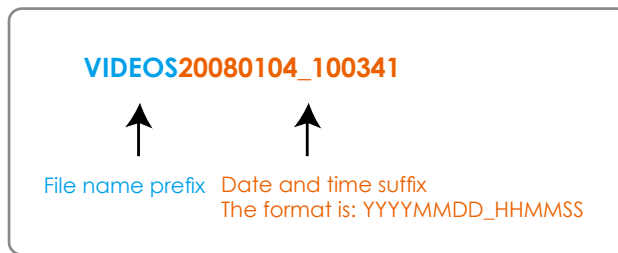


■ Maximum file size

Specify the maximal file size allowed.

■ File Name Prefix

Enter the text that will be put in front of the file name.



■ System log : Select to send a system log when a trigger is activated.

 System log

When completed, click Save to take effect and then click Close to quit this page. The new media name will appear in the media drop-down list on the Application page. To remove a media setting from the list, select a media name from the drop-down list and then click Delete. Note that only when the media setting is not being applied to an event setting can it be deleted.

Media Settings
 Available memory space: 3550KB

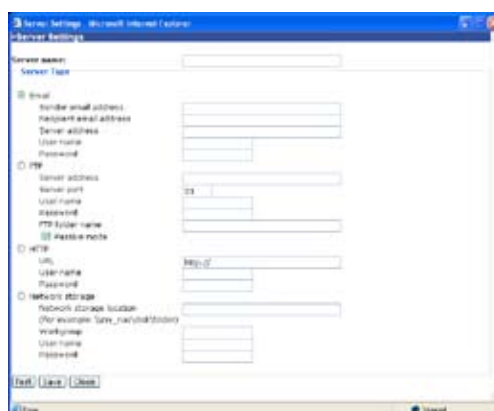
Name	Type
Snapshot	snapshot
Video Clip	videoclip
System log	systemlog

Server Settings

In the Server column, click Add to open the server setting page. In this page, you can specify where the notification messages will be send when a trigger is activated. A total of five server settings can be configured.

Server Settings

Name	Type	Address/Location
<input type="button" value="Add"/> <input type="button" value="-- Select one --"/> <input type="button" value="Delete"/>		



Server name : Enter a descriptive name for the server setting.

Server Type : There are four choices of server types available:

Email : Select to send the media via Email when a trigger is activated.

Email

Sender email address

Recipient email address

Server address

User name

Password

■ Sender email address

Enter the email address of the sender.

■ Recipient email address

Enter the email address of the recipient.

■ Server address

Enter the domain name or IP address of the email server.

■ User name

Enter the user name of the email account.

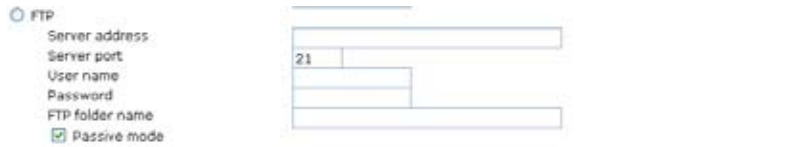
■ Password

Enter the password of the email account.

To verify if the email settings are correctly configured, click Test. The result will be shown in a pop-up window. If it works, you will also receive an email indicating the result.



FTP : Select to send the media to a FTP server when a trigger is activated.



■ Server address

Enter the domain name or IP address of the FTP server.

■ Server port

By default, the FTP port server is set to 21. Also, it can be assigned with another port number between 1025 and 65535.

■ User name

Enter the login name of the FTP account.

■ Password

Enter the password of the FTP account.

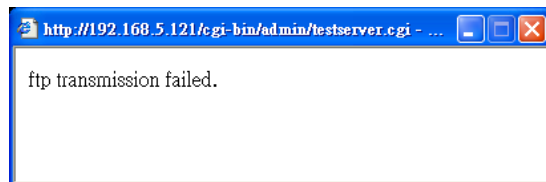
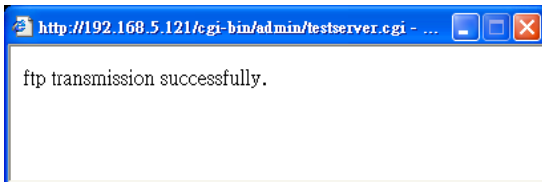
■ Remote folder name

Enter a folder to place the media file. If the folder name does not exist, the Network Camera will create one on the FTP server.

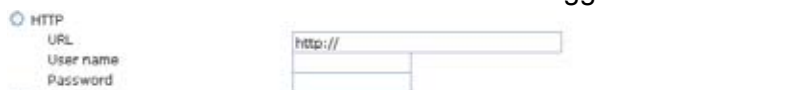
■ Passive Mode

Most firewalls do not accept new connections initiated from external requests. If the FTP server supports passive mode, select this option to enable passive mode FTP and allow data transmission to pass through the firewall.

To verify if the FTP settings are correctly configured, click Test. The result will be shown in a pop-up window. If it works, you will also receive a test.txt file on the FTP server.



HTTP : Select to send the media to a HTTP server when a trigger is activated.



■ URL

Enter the URL of the HTTP server.

■ User name

Enter the user name.

■ Password

Enter the password.

To verify if the HTTP settings are correctly configured, click Test. The result will be shown in a pop-up window. If it works, you will also receive a test.txt file on the HTTP server.



Network storage : Select to send the media to a network storage when a trigger is activated.

Network storage
 Network storage location
 (For example: \\my_nas\disk\folder)
 Workgroup
 User name
 Password

■ Network storage location

Enter the path of the network storage.

■ Workgroup

Enter the workgroup for network storage.

■ User name

Enter the user name.

■ Password

Enter the password.

To verify if the network storage settings are correctly configured, click Test. The result will be shown in a pop-up window. If it works, you will also receive a test.txt file on the network storage server.



When completed, click Save to take effect and then click Close to quit this page. The new server name will appear in the server drop-down list on the application page. To remove a server setting from the list, select a server name from the drop-down list and then click Delete. Note that only when the server setting is not being applied to an event setting can it be deleted.

Server Settings

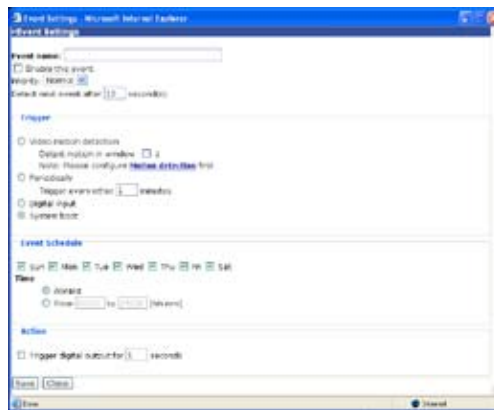
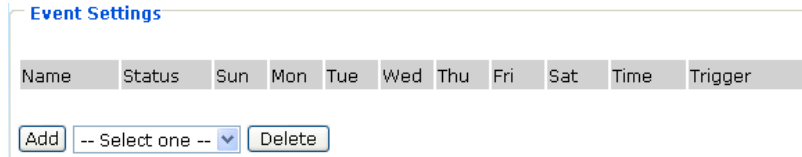
Name	Type	Address/Location
Email	email	mail.vivotek.com
FTP	ftp	ftp.vivotek.com
HTTP	http	http://vivotek.com

Event Settings

In the Event column, click Add to open the event setting page. In this page, you can arrange the three elements – Trigger, Schedule and Action to plot an event. A total of three event settings can be configured.

An event is an action initiated by user-defined trigger source; it is the causal arrangement of the following three elements:

- Trigger, also referred as the cause or stimulus, defines when to trigger the Network Camera. The trigger source can be configured to use the Network Camera's built-in motion detection mechanism or external digital input devices.
- Schedule, the effective period in which the event stays active.
- Action, also referred as the effect, defines the action to be performed by the Network Camera when the trigger is activated.



Event name : Enter a descriptive name for the event setting.

Enable this event : Select this option to enable this event setting.

Priority : Select the relative importance of this event (High, Normal, and Low). Events with higher priority setting will be executed first.

Detect next event after **seconds** : Enter the duration in seconds to pause motion detection after a motion is detected.

Trigger : Select a trigger source. There are four choices of trigger sources:



■ Video motion detection

Select this option to allow the Network Camera to use the built-in motion detection mechanism as a trigger source.

■ Periodically

Select this option to allow the Network Camera to trigger periodically for every other defined minute. At most 999 minutes can be set.

■ Digital input

Select this option to allow the Network Camera to use external digital input device as a trigger source. Depending on your applications, there are choices of digital input devices on the market which helps to sense any changes in temperature, vibration, sound and light, etc.

■ System boot

Select this option to allow the Network Camera to trigger when the power of Network Camera is disconnected.

Event Schedule : Specify the effective period for the event.

1 : Select the days on weekly basis.

2 : Select the time in 24-hr time format. Select Always to record 24 hours a day or enter the time for recording.

Action : Select the action to perform when a trigger is activated.

■ Trigger D/O for [] seconds

Select this option to turn on external digital output device when a trigger is activated. Specify the length of trigger interval in the text box.

■ Server name / Media name

Select the server and media name to allow the Network Camera to send the media files to the server when a trigger is activated.

When completed, select Enable this event. Click Save to take effect and then click Close to quit this page. The new event name will appear in the event drop-down list on the application page. To remove an event setting from the list, select an event name from the drop-down list and then click Delete.

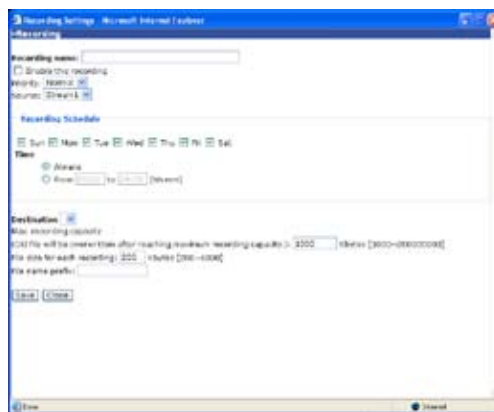
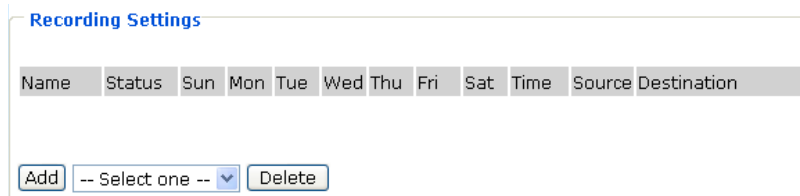
Name	Status	Sun	Mon	Tue	Wed	Thu	Fri	Sat	Time	Trigger
motion detection	OFF	V	V	V	V	V	V	V	00:00~24:00	motion

Recording

This section explains how to configure the recording settings for the Network Camera.

Recording Settings

Click Add to open the recording setting page. In this page, you can define the recording source, recording schedule and recording capacity. A total of two recording settings can be configured.



Recording name : Enter a descriptive name for the recording setting.

Enable this recording : Select this option to enable video recording.

Priority : Select the relative importance of this recording setting (High, Normal, and Low).

Source : Select the recording source (stream 1 or stream 2).

Recording Schedule : Specify the recording duration.

1 : Select the days on weekly basis.

2 : Select the time in 24-hr time format. Select Always to record 24 hours a day or enter the time for recording.

Destination : Specify a storage destination for the recorded video files. Note that the destination field is empty by default. Please go to Configuration > Application > Server Settings to set a Network storage server; see Server Settings on page 58.

Max. recording capacity : Please note that when the maximum capacity is reached, oldest file will be overwritten by the latest one.

File size for each recording : Specify the file size for each recording media.

File name prefix : Enter the text that will be put in front of the file name.

When completed, select Enable this recording. Click Save to take effect and then click Close to quit this page. The new recording name will appear in the recording drop-down list on the recording page. To remove a recording setting from the list, select a recording name from the drop-down list then and click Delete.

Recording Settings

Name	Status	Sun	Mon	Tue	Wed	Thu	Fri	Sat	Time	Source	Destination
Mon2Fri	ON	V	V	V	V	V	V	V	00:00~24:00	stream1	Network storage

System Log

This section explains how to configure the Network Camera to send system log to remote server as a backup. It is composed of the following two columns: Remote Log and Current Log.

Remote Log

Remote Log

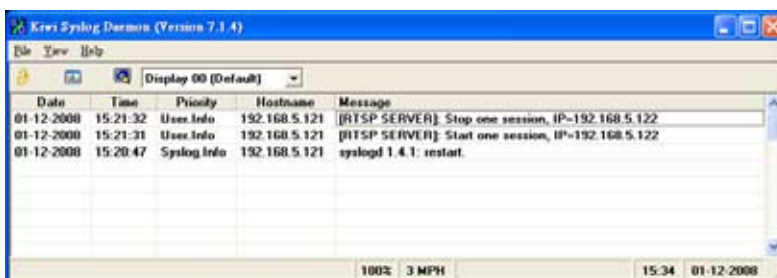
Enable remote log

Log server settings

IP address

port

You can configure the Network Camera to send the system log file to a remote server as a log backup. Before utilizing this feature, it is suggested to install a log-recording tool to receive system log messages from the Network Camera. For example, a tool – Kiwi Syslog Daemon. Visit <http://www.kiwisyslog.com/kiwi-syslog-daemon-overview/>.



- 1** : In the IP address text box, enter the IP address of the remote server.
- 2** : In the port text box, enter the port number of the remote server.
- 3** : When completed, select Enable remote log and click Save to take effect.

Current Log

Current Log

```
Jan 2 21:07:37 syslogd 1.4.1: restart.  
Jan 2 21:07:45 [UPnPIGDCP]: Search IGD failed (ffffff)  
Jan 2 21:07:47 [DRM Service]: Starting DRM service.  
Jan 2 21:07:56 [RTSP SERVER]: Start one session, IP=192.168.5.122  
Jan 2 21:08:01 [SYS]: Serial number = 0002D1115566  
Jan 2 21:08:01 [SYS]: System starts at Wed Jan 2 21:08:01 UTC 2008  
Jan 2 21:08:01 [NET]: === NET INFO ===  
Jan 2 21:08:02 [NET]: Host IP = 192.168.5.121  
Jan 2 21:08:02 [NET]: Subnet Mask = 255.255.255.0  
Jan 2 21:08:02 [NET]: Gateway = 192.168.5.1  
Jan 2 21:08:02 [NET]: Primary DNS = 192.168.0.10  
Jan 2 21:08:02 [NET]: Secondary DNS = 192.168.0.20  
Jan 2 21:08:04 [SYS]: Recording entry 0 stop
```

This column displays the system's log in chronological order. The system log is stored in the Network Camera's buffer area and will be overwritten when reaching a certain amount.

View Parameters

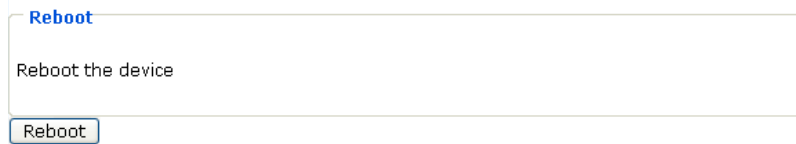
The View parameters page lists the entire system's parameters in alphabetical order. If you need technical assistance, please provide the information listed in this page.

```
Parameter List
do_i0_normalstate='open'
network_type='lan'
network_resetip='1'
network_ipaddress='192.168.5.121'
network_subnet='255.255.255.0'
network_router='192.168.5.1'
network_dns1='192.168.0.10'
network_dns2='192.168.0.20'
network_wins1=''
network_wins2=''
network_ftp_port='21'
network_http_port='80'
network_http_alternateport='8080'
network_http_authmode='basic'
network_http_s0_accessname='video.mjpg'
network_http_s1_accessname='video2.mjpg'
network_rtsp_port='554'
network_rtsp_authmode='disable'
network_rtsp_s0_accessname='live.sdp'
network_rtsp_s0_audiotrack='0'
network_rtsp_s0_multicast_alwaysmulticast='0'
network_rtsp_s0_multicast_videoport='5560'
network_rtsp_s0_multicast_audioport='5562'
network_rtsp_s0_multicast_ipaddress='239.128.1.99'
network_rtsp_s0_multicast_ttl='15'
network_rtsp_s1_accessname='live2.sdp'
network_rtsp_s1_audiotrack='0'
network_rtsp_s1_multicast_alwaysmulticast='0'
network_rtsp_s1_multicast_videoport='5564'
network_rtsp_s1_multicast_audioport='5566'
network_rtsp_s1_multicast_ipaddress='239.128.1.100'
```

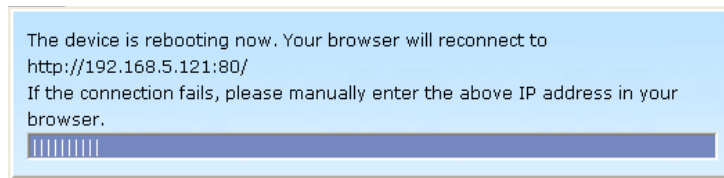
Maintenance

This chapter explains how to restore the Network Camera to factory default, upgrade firmware version, etc.

Reboot

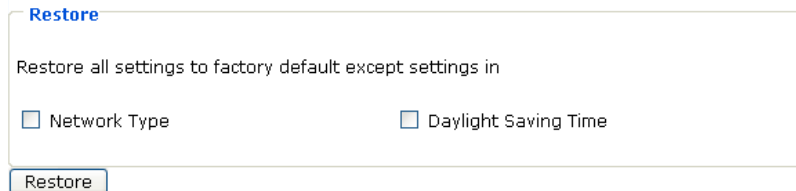


This feature allows you to turn off and then turn on the Network Camera. It takes about one ~ two minutes to complete the process. When completed, the live video will be displayed in your browser. The following message is displayed during the rebooting process.



If the connection fails after rebooting, manually enter the IP address of the Network Camera in the address field to resume the connection.

Restore

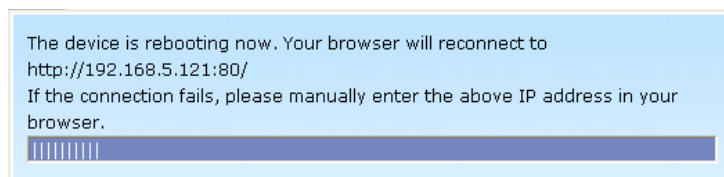


This feature allows you to restore the Network Camera to factory default. Two settings can be excluded:

- **Network Type** : Select this option to retain the Network Type settings (see Network Type on page 27).
- **Daylight Saving Time** : Select this option to retain the Daylight Saving Time settings (see System on page 23),

If none of the options is selected, all settings will be restored to factory default.

The following message is displayed during the restoring process.



Upload / Export Daylight Saving Time Configuration File

Upload

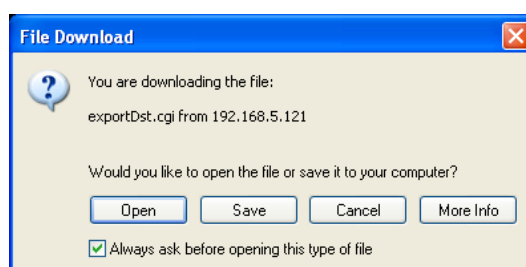
Update Daylight Saving Time Rules

Export Daylight Saving Time Configuration File

Get Daylight Saving Time Configuration File.

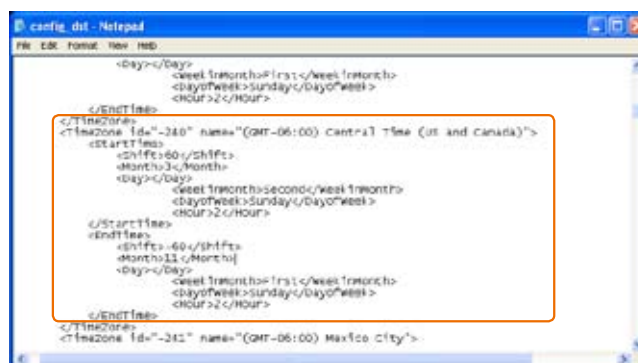
This feature allows you to set the starting time and ending time of DST.

In the Export Daylight Saving Time Configuration File Column, click Export to export an Extensible Markup Language (*.xml) file from the Network Camera.



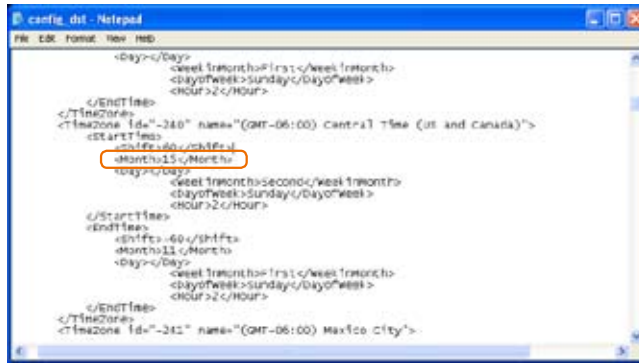
- 1 : Open the XML file using Microsoft® Notepad and locate your time zone; set the starting time and ending time of the DST. When completed, save the file.

In the example below, the DST begins each year at 2:00 a.m. on the second Sunday in March and ends at 2:00 a.m. on the first Sunday in November.



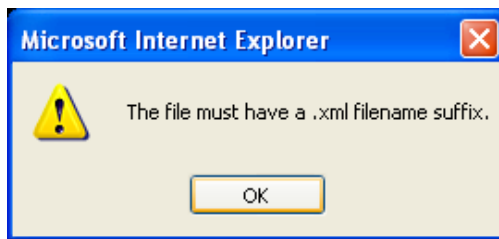
- 2 : In the Upload Column, click Browse... and specify the XML file.

If the incorrect date and time is assigned, you will see the following warning message when uploading the file to the Network Camera.



3 : Click Upload. To enable the DST, see System Time on page 21.

The following message is displayed when attempting to upload an incorrect file format.



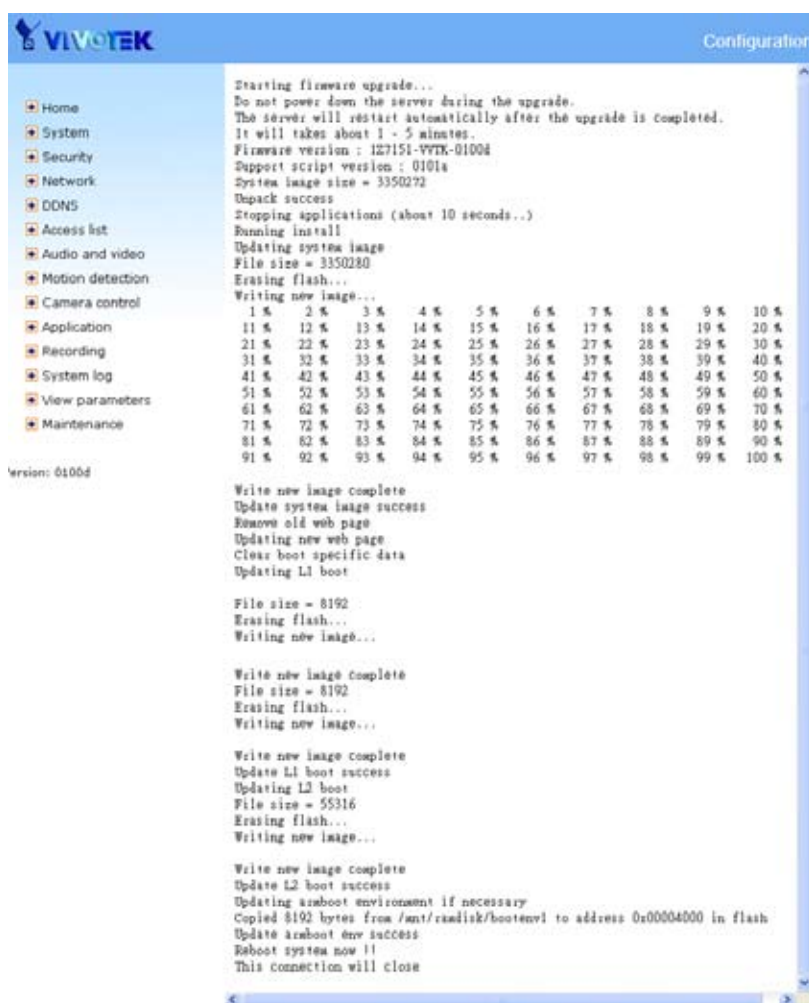
Upgrade Firmware



This feature allows you to upgrade the firmware on your Network Camera. It takes about five minutes to complete the process. Do not power down the Network Camera during the upgrade. The upgrade is successful as you see “Reboot system now!! This connection will close”.

- 1** : Download a new firmware file from VIVOTEK website. The file is in pkg file format.
- 2** : Click Browse... and specify the firmware file.
- 3** : Click Upgrade. The Network Camera starts to upgrade and will reboot automatically when the upgrade completes.

The following message is displayed when the upgrade is succeeded. After that, re-access the Network Camera.



The following message is displayed when you have selected an incorrect firmware file.

Starting firmware upgrade...
 Do not power down the server during the upgrade.
 The server will restart automatically after the upgrade is completed.
 It will takes about 1 - 5 minutes.
 Wrong PKG file format
 Unpack fail

Appendix

URL Commands for the Network Camera

Overview

For some customers who already have their own web site or web control application, the Network Camera/Video Server can be easily integrated through URL syntax. This section specifies the external HTTP-based application programming interface. The HTTP-based camera interface provides the functionality to request a single image, control camera functions (PTZ, output relay etc.), and get and set internal parameter values. The image and CGI-requests are handled by the built-in Web server.

Style Convention

In URL syntax and in descriptions of CGI parameters, text within angle brackets denotes content that is to be replaced with either a value or a string. When replacing the text string, the angle brackets should also be replaced. An example of this is the description of the name for the server, denoted with <servername> in the URL syntax description below, that is replaced with the string myserver in the URL syntax example further down in the page.

URL syntax is denoted with the word "Syntax:" written in bold face followed by a box with the referenced syntax as shown below. For example, name of the server is written as <servername> and is intended to be replaced with the name of the actual server. This can either be a name, e.g., "mywebcam" or "thecam.adomain.net" or the associated IP number for the server, e.g., 192.168.0.220.

Syntax:

```
http://<servername>/cgi-bin/viewer/video.jpg
```

Description of returned data is written with "**Return:**" in bold face followed by the returned data in a box. All data is returned in HTTP format, i.e., each line is separated with a Carriage Return and Line Feed (CRLF) printed as \r\n.

Return:

```
HTTP/1.0 <HTTP code> <HTTP text>\r\n
```

URL syntax examples are written with "**Example:**" in bold face followed by a short description and a light grey box with the example.

Example: request a single snapshot image

```
http://mywebserver/cgi-bin/viewer/video.jpg
```


General CGI URL Syntax and Parameters

CGI parameters are written in lower-case and as one word without any underscores or other separators. When the CGI request includes internal camera parameters, these parameters must be written exactly as they are named in the camera or video server. The CGIs are organized in functionally-related directories under the cgi-bin directory. The file extension .cgi is required.

Syntax:

```
http://<servername>/cgi-bin/<subdir>[/<subdir>...]/<cgi>.<ext>
[?<parameter>=<value>[&<parameter>=<value>...]]
```

Example: Set digital output #1 to active

```
http://mywebserver/cgi-bin/dido/setdo.cgi?dol=1
```

Security Level

SECURITY LEVEL	SUB-DIRECTORY	DESCRIPTION
0	anonymous	Unprotected.
1 [view]	anonymous, viewer, dido, camctrl	1. Can view, listen, talk to camera. 2. Can control DI/DO, PTZ of the camera.
4 [operator]	anonymous, viewer, dido, camctrl, operator	Operator access rights can modify most of the camera's parameters except some privileges and network options.
6 [admin]	anonymous, viewer, dido, camctrl, operator, admin	Administrator access rights can fully control the camera's operations.
7	N/A	Internal parameters. Unable to be changed by any external interfaces.

Get Server Parameter Values

Note: The access right depends on the URL directory.

Method: GET/POST

Syntax:

```
http://<servername>/cgi-bin/anonymous/getparam.cgi?[<parameter>]
[&<parameter>...]
```

```

http://<servername>/cgi-bin/viewer/getparam.cgi?[<parameter>]
[&<parameter>...]

http://<servername>/cgi-bin/operator/getparam.cgi?[<parameter>]
[&<parameter>...]

http://<servername>/cgi-bin/admin/getparam.cgi?[<parameter>]
[&<parameter>...]

```

Where the *<parameter>* should be *<group>[_<name>]* or *<group>[.<name>]*. If you do not specify any parameters, all the parameters on the server will be returned. If you specify only *<group>*, the parameters of the related group will be returned.

When querying parameter values, the current parameter values are returned.

A successful control request returns parameter pairs as follows:

Return:

```

HTTP/1.0 200 OK\r\n
Content-Type: text/html\r\n
Context-Length: <length>\r\n
\r\n
<parameter pair>

```

where *<parameter pair>* is

<parameter>=<value>\r\n

[<parameter pair>]

<length> is the actual length of content.

Example: Request IP address and its response

Request:

```
http://192.168.0.123/cgi-bin/admin/getparam.cgi?network_ipaddress
```

Response:

```

HTTP/1.0 200 OK\r\n
Content-Type: text/html\r\n
Context-Length: 33\r\n
\r\n
network.ipaddress=192.168.0.123\r\n

```

Set Server Parameter Values

Note: The access right depends on the URL directory.

Method: GET/POST

Syntax:

```
http://<servername>/cgi-bin/<anonymous>/setparam.cgi? <parameter>=<value>
[&<parameter>=<value>...][&update=<value>][&return=<return page>]
```

```
http://<servername>/cgi-bin/<viewer>/setparam.cgi? <parameter>=<value>
[&<parameter>=<value>...][&update=<value>] [&return=<return page>]
```

```
http://<servername>/cgi-bin/<operator>/setparam.cgi? <parameter>=<value>
[&<parameter>=<value>...][&update=<value>] [&return=<return page>]
```

```
http://<servername>/cgi-bin/<admin>/setparam.cgi? <parameter>=<value>
[&<parameter>=<value>...][&update=<value>] [&return=<return page>]
```

PARAMETER	VALUE	DESCRIPTION
<group>_<name>	value to assigned	Assign <value> to the parameter <group>_<name>.
update	<boolean>	Set to 1 to update all fields (no need to update parameter in each group).
return	<return page>	Redirect to the page <return page> after the parameter is assigned. The <return page> can be a full URL path or relative path according to the current path. If you omit this parameter, it will redirect to an empty page. (Note: The return page can be a general HTML file (.htm, .html) or a VIVOTEK server script executable (.vspx) file. It cannot be a CGI command or have any extra parameters. This parameter must be placed at the end of the parameter list

Return:

```
HTTP/1.0 200 OK\r\n
Content-Type: text/html\r\n
Context-Length: <length>\r\n
\r\n
<parameter pair>
```

where <parameter pair> is

<parameter>=<value>\r\n

[<parameter pair>]

Only the parameters that you set and are readable will be returned.

Example: Set the IP address of server to 192.168.0.123:

Request:

http://myserver/cgi-bin/admin/setparam.cgi?network_ipaddress=192.168.0.123

Response:

HTTP/1.0 200 OK\r\n

Content-Type: text/html\r\n

Context-Length: 33\r\n

\r\n

network.ipaddress=192.168.0.123\r\n

Available parameters on the server

Valid values:

VALID VALUES	DESCRIPTION
string[<n>]	Text strings shorter than 'n' characters. The characters ";, <, >, & are invalid.
password[<n>]	The same as string but displays '*' instead.
integer	Any number between $(-2^{31} - 1)$ and $(2^{31} - 1)$.
positive integer	Any number between 0 and $(2^{32} - 1)$.
<m> ~ <n>	Any number between 'm' and 'n'.
domain name[<n>]	A string limited to a domain name shorter than 'n' characters (eg. www.ibm.com).
email address [<n>]	A string limited to an email address shorter than 'n' characters (eg. joe@www.ibm.com).
ip address	A string limited to an IP address (eg. 192.168.1.1).
mac address	A string limited to contain a MAC address without hyphens or colons.
boolean	A boolean value of 1 or 0 represents [Yes or No], [True or False], [Enable or Disable].
<value1>, <value2>, <value3>, ...	Enumeration. Only given values are valid.
blank	A blank string.
everything inside <>	A description

NOTE: The camera should not be restarted when parameters are changed.

Group: **system**

NAME	VALUE	SECURITY (get/set)	DESCRIPTION
hostname	string[40]	1/6	Host name of server.
ledoff	<boolean>	6/6	Turn on (0) or turn off (1) all led indicators.
date	<yyyy/mm/dd>, keep, auto	6/6	Current date of system. Set to 'keep' to keep date unchanged. Set to 'auto' to use NTP to synchronize date.
time	<hh:mm:ss>, keep, auto	6/6	Current time of the system. Set to 'keep' to keep time unchanged. Set to 'auto' to use NTP to synchronize time.
datetime	<MMDDhhmmYYYY.ss>	6/6	Another current time format of the system.
ntp	<domain name>, <ip address>, <blank>	6/6	NTP server. *Do not use "skip to invoke default server" for default value.
timezoneindex	-480 ~ 520	6/6	Indicate timezone and area. -480: GMT-12:00 Eniwetok, Kwajalein -440: GMT-11:00 Midway Island, Samoa -400: GMT-10:00 Hawaii -360: GMT-09:00 Alaska -320: GMT-08:00 Las Vegas, San_Francisco, Vancouver -280: GMT-07:00 Mountain Time, Denver -281: GMT-07:00 Arizona -240: GMT-06:00 Central America, Central Time, Mexico City, Saskatchewan -200: GMT-05:00 Eastern Time, New York, Toronto -201: GMT-05:00 Bogota, Lima, Quito, Indiana -160: GMT-04:00 Atlantic Time, Canada, Caracas, La Paz, Santiago -140: GMT-03:30 Newfoundland -120: GMT-03:00 Brasilia, Buenos Aires, Georgetown, Greenland -80: GMT-02:00 Mid-Atlantic

				<p>-40: GMT-01:00 Azores, Cape_Verde_IS.</p> <p>0: GMT Casablanca, Greenwich Mean Time: Dublin, Edinburgh, Lisbon, London</p> <p>40: GMT 01:00 Amsterdam, Berlin, Rome, Stockholm, Vienna, Madrid, Paris</p> <p>41: GMT 01:00 Warsaw, Budapest, Bern</p> <p>80: GMT 02:00 Athens, Helsinki, Istanbul, Riga</p> <p>81: GMT 02:00 Cairo</p> <p>82: GMT 02:00 Lebanon, Minsk</p> <p>83: GMT 02:00 Israel</p> <p>120: GMT 03:00 Baghdad, Kuwait, Riyadh, Moscow, St. Petersburg, Nairobi</p> <p>121: GMT 03:00 Iraq</p> <p>140: GMT 03:30 Tehran</p> <p>160: GMT 04:00 Abu Dhabi, Muscat, Baku, Tbilisi, Yerevan</p> <p>180: GMT 04:30 Kabul</p> <p>200: GMT 05:00 Ekaterinburg, Islamabad, Karachi, Tashkent</p> <p>220: GMT 05:30 Calcutta, Chennai, Mumbai, New Delhi</p> <p>230: GMT 05:45 Kathmandu</p> <p>240: GMT 06:00 Almaty, Novosibirsk, Astana, Dhaka, Sri Jayawardenepura</p> <p>260: GMT 06:30 Rangoon</p> <p>280: GMT 07:00 Bangkok, Hanoi, Jakarta, Krasnoyarsk</p> <p>320: GMT 08:00 Beijing, Chongqing, Hong Kong, Kuala Lumpur, Singapore, Taipei</p> <p>360: GMT 09:00 Osaka, Sapporo, Tokyo, Seoul, Yakutsk</p> <p>380: GMT 09:30 Adelaide, Darwin</p> <p>400: GMT 10:00 Brisbane, Canberra, Melbourne, Sydney, Guam, Vladivostok</p> <p>440: GMT 11:00 Magadan, Solomon Is., New Caledonia</p> <p>480: GMT 12:00 Aucklan, Wellington, Fiji, Kamchatka, Marshall Is.</p> <p>520: GMT 13:00 Nuku'Alofa</p>
--	--	--	--	--

daylight_enable	<boolean>	6/6	Enable automatic daylight saving time in time zone.
daylight_dstactualmode	<boolean>	6/7	Check if current time is under daylight saving time.
daylight_auto_begin_time	string[19]	6/7	Display the current daylight saving start time.
daylight_auto_endtime	string[19]	6/7	Display the current daylight saving end time.
updateinterval	0, 3600, 86400, 604800, 2592000	6/6	0 to Disable automatic time adjustment, otherwise, it indicates the seconds between NTP automatic update intervals.
restore	0, <positive integer>	7/6	Restore the system parameters to default values after <value> seconds.
reset	0, <positive integer>	7/6	Restart the server after <value> seconds if <value> is non-negative.
restoreexceptnet	0, <positive integer>	7/6	Restore the system parameters to default values except (ipaddress, subnet, router, dns1, dns2, pppoe). Restart the server after <value> seconds.
restoreexceptdst	0, <positive integer>	7/6	Restore the system parameters to default values except all daylight saving time settings.

Subgroup of **system: info** (The fields in this group are unchangeable.)

NAME	VALUE	SECURITY (get/set)	DESCRIPTION
modelname	string[40]	0/7	Internal model name of the server
serialnumber	<mac address>	0/7	12 characters MAC address (without hyphens).
firmwareversion	string[40]	0/7	Firmware version, including model, company, and version number in the format: <MODEL-BRAND-VERSION>
language_count	<integer>	0/7	Number of webpage languages available on the server.
language_i<0~(count-1)>	string[16]	0/7	Available language lists.

Group: **status**

NAME	VALUE	SECURITY (get/set)	DESCRIPTION
di_i<0~(ndi-1)>	<boolean>	1/7	0 => Inactive, normal 1 => Active, triggered
do_i<0~(ndo-1)>	<boolean>	1/7	0 => Inactive, normal 1 => Active, triggered
onlinenum_rtsp	integer	6/7	Current number of RTSP connections.
onlinenum_httppush	integer	6/7	Current number of HTTP push server connections.

Group: di_i<0~(ndi-1)>

NAME	VALUE	SECURITY (get/set)	DESCRIPTION
normalstate	high, low	1/1	Indicates open circuit or closed circuit (inactive status)

Group: do_i<0~(ndo-1)>

NAME	VALUE	SECURITY (get/set)	DESCRIPTION
normalstate	open, grounded	1/1	Indicate open circuit or closed circuit (inactive status)

Group: security

NAME	VALUE	SECURITY (get/set)	DESCRIPTION
user_i0_name	string[64]	6/7	User name of root
user_i<1~20>_name	string[64]	6/7	User name
user_i0_pass	password[64]	6/6	Root password
user_i<1~20>_pass	password[64]	7/6	User password
user_i0_privilege	admin	6/7	Root privilege
user_i<1~20>_privilege	viewer, operator, admin	6/6	User privilege

Group: **network**

NAME	VALUE	SECURITY (get/set)	DESCRIPTION
type	lan, pppoe	6/6	Network connection type.

resetip	<boolean>	6/6	1 => Get ipaddress, subnet, router, dns1, dns2 from DHCP server at next reboot. 0 => Use preset ipaddress, subnet, router, dns1, and dns2.
ipaddress	<ip address>	6/6	IP address of server.
subnet	<ip address>	6/6	Subnet mask.
router	<ip address>	6/6	Default gateway.
dns1	<ip address>	6/6	Primary DNS server.
dns2	<ip address>	6/6	Secondary DNS server.
wins1	<ip address>	6/6	Primary WINS server.
wins2	<ip address>	6/6	Secondary WINS server.

Subgroup of **network: ftp**

NAME	VALUE	SECURITY (get/set)	DESCRIPTION
port	21, 1025~65535	6/6	Local ftp server port.

Subgroup of **network: http**

NAME	VALUE	SECURITY (get/set)	DESCRIPTION
port	80, 1025 ~ 65535	6/6	HTTP port.
alternateport	1025~65535	6/6	Alternate HTTP port.
authmode	basic, digest	1/6	HTTP authentication mode.
s0_accessname	string[32]	1/6	HTTP server push access name for stream 1.
s1_accessname	string[32]	1/6	HTTP server push access name for stream 2.

Subgroup of **network: rtsp**

NAME	VALUE	SECURITY (get/set)	DESCRIPTION
port	554, 1025 ~ 65535	1/6	RTSP port.
authmode	disable, basic, digest	1/6	RTSP authentication mode.
s0_accessname	string[32]	1/6	RTSP access name for stream1.
s1_accessname	string[32]	1/6	RTSP access name for stream2.
s0_audiotrack	<integer>	6/6	The current audio track for stream1. -1 => audio mute
s1_audiotrack	<integer>	6/6	The current audio track for stream2. -1 => audio mute

Subgroup of network_rtsp_s<0~(n-1)>: multicast, n is stream count

NAME	VALUE	SECURITY (get/set)	DESCRIPTION
alwaysmulticast	<boolean>	4/4	Enable always multicast.
ipaddress	<ip address>	4/4	Multicast IP address.
videoport	1025 ~ 65535	4/4	Multicast video port.
audioport	1025 ~ 65535	4/4	Multicast audio port.
ttl	1 ~ 255	4/4	Multicast time to live value.

Subgroup of **network: sip**

NAME	VALUE	SECURITY (get/set)	DESCRIPTION
port	1025 ~ 65535	1/6	SIP port.

Subgroup of **network: rtp**

NAME	VALUE	SECURITY (get/set)	DESCRIPTION
videoport	1025 ~ 65535	6/6	Video channel port for RTP.
audioport	1025 ~ 65535	6/6	Audio channel port for RTP.

Subgroup of **network: pppoe**

NAME	VALUE	SECURITY (get/set)	DESCRIPTION
user	string[128]	6/6	PPPoE account user name.
pass	password[64]	6/6	PPPoE account password.

Group: ipfilter

NAME	VALUE	SECURITY (get/set)	DESCRIPTION
allow_i<0~9>_start	1.0.0.0 ~ 255.255.255.255	6/6	Allowed starting IP address for connection.
allow_i<0~9>_end	1.0.0.0 ~ 255.255.255.255	6/6	Allowed ending IP address for connection.
deny_i<0~9>_start	1.0.0.0 ~ 255.255.255.255	6/6	Denied starting IP address for connection.
deny_i<0~9>_end	1.0.0.0 ~ 255.255.255.255	6/6	Denied ending IP address for connection.

Group: **videoin**

NAME	VALUE	SECURITY (get/set)	DESCRIPTION
cmosfreq	50, 60	4/4	CMOS frequency.
whitebalance	1, 2	4/4	1 => Auto 2 => Keep current value
enableblc	<boolean>	4/4	Enable backlight compensation.
daynight	auto,schedule,on ,off	6/6	auto => auto daynight on => ircut filter on off => ircut filter off schedule => scheduled ircut filter

Group: **videoin_c<0~(n-1)>** for n channel products, and m is stream number

NAME	VALUE	SECURITY (get/set)	DESCRIPTION
color	0, 1	4/4	0 => monochrome 1 => color
flip	<boolean>	4/4	Flip the image.
mirror	<boolean>	4/4	Mirror the image.
ptzstatus	<integer>	1/7	A 32-bit integer, each bit can be set separately as follows: Bit 0 => Support camera control function; 0(not support), 1(support) Bit 1 => Built-in or external camera; 0 (external), 1(built-in) Bit 2 => Support pan operation; 0(not support), 1(support) Bit 3 => Support tilt operation; 0(not support), 1(support) Bit 4 => Support zoom operation; 0(not support), 1(support) Bit 5 => Support focus operation; 0(not support), 1(support)
text	string[16]	1/4	Enclose caption.
imprinttimestamp	<boolean>	4/4	Overlay time stamp on video.
exposurecontrol	0 1 2 3	4/4	Indicate exposure. 0 => auto mode 1 => shutter priority 2 => iris priority

			3 => manual mode
shutterpriority	0~15	4/4	<p>Indicate exposure time when choosing shutter priority in “exposurecontrol”</p> <p>0 => 1/2 1 => 1/4 2 => 1/8 3 => 1/15 4 => 1/30 5 => 1/60 6 => 1/90 7 => 1/125 8 => 1/250 9 => 1/500 10 => 1/725 11 => 1/1000 12 => 1/2000 13 => 1/4000 14 => 1/6000 15 => 1/10000</p>
shutterspeed	0~10	4/4	<p>Indicate exposure time when choosing manual mode in “exposurecontrol”</p> <p>0 => 1/60 1 => 1/90 2 => 1/125 3 => 1/250 4 => 1/500 5 => 1/725 6 => 1/1000 7 => 1/2000 8 => 1/4000 9 => 1/6000 10 => 1/10000</p>
irispriority	0~16	4/4	<p>Indicate iris diaphragm when choosing iris priority in “exposurecontrol”</p> <p>16 => F1.4 15 => F1.6 14 => F2.0 13 => F2.4 12 => F2.8 11 => F3.4</p>

			<p>10 => F4.0</p> <p>9 => F4.8</p> <p>8 => F5.6</p> <p>7 => F6.8</p> <p>6 => F8.0</p> <p>5 => F9.6</p> <p>4 => F11</p> <p>3 => F14</p> <p>2 => F16</p> <p>1 => F19</p> <p>0 => F22</p>
irismanual	0~16	4/4	<p>Indicate iris diaphragm when choosing manual mode in “exposurecontrol”</p> <p>16 => F1.4</p> <p>15 => F1.6</p> <p>14 => F2.0</p> <p>13 => F2.4</p> <p>12 => F2.8</p> <p>11 => F3.4</p> <p>10 => F4.0</p> <p>9 => F4.8</p> <p>8 => F5.6</p> <p>7 => F6.8</p> <p>6 => F8.0</p> <p>5 => F9.6</p> <p>4 => F11</p> <p>3 => F14</p> <p>2 => F16</p> <p>1 => F19</p> <p>0 => F22</p>
gain	1~15	4/4	<p>Indicate gain of input</p> <p>1 => 0dB</p> <p>2 => 2dB</p> <p>3 => 4dB</p> <p>4 => 6dB</p> <p>5 => 8dB</p> <p>6 => 10dB</p> <p>7 => 12dB</p> <p>8 => 14dB</p> <p>9 => 16dB</p>

			<p>10 => 18dB</p> <p>11 => 20dB</p> <p>12 => 22dB</p> <p>13 => 24dB</p> <p>14 => 26dB</p> <p>15 => 28dB</p>
s<0~(m-1)>_codectype	mpeg4, mjpeg	1/4	Video codec type.
s<0~(m-1)>_resolution	176x144, 320x240, 640x480	1/4	Video resolution in pixels.
s<0~(m-1)>_mpeg4_in traperiod	250, 500, 1000, 2000, 3000, 4000	4/4	Intra frame period in milliseconds.
s<0~(m-1)>_mpeg4_ra tecontrolmode	cbr, vbr	4/4	cbr, constant bitrate vbr, fix quality
s<0~(m-1)>_mpeg4_q uant	1~5	4/4	Quality of video when choosing vbr in "ratecontrolmode". 1 = worst quality, 5 = best quality.
s<0~(m-1)>_mpeg4_bi trate	20000 30000 40000 50000 64000 128000 256000 384000 512000 768000 1000000 1200000 1500000 2000000 3000000 4000000	4/4	Set bit rate in bps when choose cbr in "ratecontrolmode". 20000 => 20 Kbps 30000 => 30 Kbps 40000 => 40 Kbps 50000 => 50 Kbps 64000 => 64 Kbps 128000 => 128 Kbps 256000 => 256 Kbps 512000 => 512 Kbps 768000 => 768 Kbps 1000000 => 1 Mbps 1500000 => 1.5 Mbps 2000000 => 2 Mbps 3000000 => 3 Mbps 4000000 => 4 Mbps

s<0~(m-1)>_mpeg4_maxframe	1 2 3 5 10 15 20 25 30 (only for 60Hz)	4/4	Set maximum frame rate in fps (for MPEG-4). 1 => 1 fps 2 => 2 fps 3 => 3 fps 5 => 5 fps 8 => 8 fps 10 => 10 fps 15 => 15 fps 20 => 20 fps 25 => 25 fps 30 => 30 fps (on for 60Hz)
s<0~(m-1)>_mjpeg_quality	1 ~ 5	4/4	Quality of JPEG video. 1 = worst quality, 5 = best quality.
s<0~(m-1)>_mjpeg_maxframe	1 2 3 5 10 15 20 25 30 (only for 60Hz)	4/4	Set maximum frame rate in fps (for JPEG). 1 => 1 fps 2 => 2 fps 3 => 3 fps 5 => 5 fps 8 => 8 fps 10 => 10 fps 15 => 15 fps 20 => 20 fps 25 => 25 fps 30 => 30 fps (on for 60Hz)
s<0~(m-1)>_forcei	1	7/6	Force I frame.

Group: ircutcontrol

NAME	VALUE	SECURITY (get/set)	DESCRIPTION
daymodebegin	<hh:mm>	6/6	Day mode begin time
daymodeend	<hh:mm>	6/6	Day mode end time

Group: **audioin_c<0~(n-1)>** for n channel products

NAME	VALUE	SECURITY (get/set)	DESCRIPTION
source	micin, linein	4/4	Micin => use external microphone input. Linein => use line input.
mute	0, 1	4/4	Enable audio mute. 0 => Disable

			1 => Enable
gain	0~31	4/4	Gain of input 31 => +12 dB 30 => +10.5 dB 29 => +9 dB 28 => +7.5 dB 27 => +6 dB 26 => +4.5 dB 25 => +3 dB 24 => +1.5 dB 23 => 0 dB 22 => -1.5 dB 21 => -3 dB 20 => -4.5 dB 19 => -6 dB 18 => -7.5 dB 17 => -9 dB 16 => -10.5 dB 15 => -12 dB 14 => -13.5 dB 13 => -15 dB 12 => -16.5 dB 11 => -18 dB 10 => -19.5 dB 9 => -21 dB 8 => -22.5 dB 7 => -24 dB 6 => -25.5 dB 5 => -27 dB 4 => -28.5 dB 3 => -30 dB 2 => -31.5 dB 1 => >-33 dB 0 => -34.5 dB
boostmic	0, 1	4/4	Enable microphone boost. 0 => 0db 1 => 20db
s<0~(m-1)>_codectype	aac4, gamr	4/4	Set audio codec type for input.
s<0~(m-1)>_aac4_bitrate	16000, 32000,	4/4	Set AAC4 bitrate in bps.

	48000, 64000, 96000, 128000		
s<0~(m-1)>_gamr_bitrate	4750, 5150, 5900, 6700, 7400, 7950, 10200, 12200	4/4	Set AMR bitrate in bps.

Group: **image_c<0~(n-1)>** for n channel products

NAME	VALUE	SECURITY (get/set)	DESCRIPTION
brightness	-7 ~ 7	4/4	Adjust brightness of image according to mode settings.
sharpness	-7 ~ 7	4/4	Adjust sharpness of image according to mode settings.

Group: **motion_c<0~(n-1)>** for m profile and n channel product

NAME	VALUE	SECURITY (get/set)	DESCRIPTION
enable	<boolean>	4/4	Enable motion detection.
win_i<0~2>_enable	<boolean>	4/4	Enable motion window 1~3.
win_i<0~2>_name	string[14]	4/4	Name of motion window 1~3.
win_i<0~2>_left	0 ~ 320	4/4	Left coordinate of window position.
win_i<0~2>_top	0 ~ 240	4/4	Top coordinate of window position.
win_i<0~2>_width	0 ~ 320	4/4	Width of motion detection window.
win_i<0~2>_height	0 ~ 240	4/4	Height of motion detection window.
win_i<0~2>_objszie	0 ~ 100	4/4	Percent of motion detection window.
win_i<0~2>_sensitivity	0 ~ 100	4/4	Sensitivity of motion detection window.

Group: **ddns**

NAME	VALUE	SECURITY (get/set)	DESCRIPTION
enable	<boolean>	6/6	Enable or disable the dynamic DNS.
provider	Safe100, DyndnsDynamic, DyndnsCustom,	6/6	Safe100 => safe100.net DyndnsDynamic => dyndns.org (dynamic) DyndnsCustom => dyndns.org (custom)

	TZO, DHS, DynInterfree, CustomSafe100		TZO => tzo.com DHS => dhs.org DynInterfree =>dyn-interfree.it CustomSafe100 => Custom server using safe100 method
<provider>_hostname	string[128]	6/6	Your dynamic hostname.
<provider>_usernameemail	string[64]	6/6	Your user or email to login to the DDNS service provider
<provider>_passwordkey	string[64]	6/6	Your password or key to login to the DDNS service provider.
<provider>_servername	string[128]	6/6	The server name for safe100. (This field only exists if the provider is customsaf100)

Group: upnpresentation

NAME	VALUE	SECURITY (get/set)	DESCRIPTION
enable	<boolean>	6/6	Enable or disable the UPNP presentation service.

Group: upnpportforwarding

NAME	VALUE	SECURITY (get/set)	DESCRIPTION
enable	<boolean>	6/6	Enable or disable the UPNP port forwarding service.
upnpnatstatus	0~3	6/7	The status of UpnP port forwarding, used internally. 0 = OK, 1 = FAIL, 2 = no IGD router, 3 = no need for port forwarding

Group: **syslog**

NAME	VALUE	SECURITY (get/set)	DESCRIPTION
enableremotelog	<boolean>	6/6	Enable remote log.
serverip	<IP address>	6/6	Log server IP address.
serverport	514, 1025~65535	6/6	Server port used for log.
level	0~7	6/6	Levels used to distinguish the importance of the information: 0: LOG_EMERG 1: LOG_ALERT 2: LOG_CRIT

			3: LOG_ERR 4: LOG_WARNING 5: LOG_NOTICE 6: LOG_INFO 7: LOG_DEBUG
--	--	--	--

Group: **camctrl_c<0~(n-1)>** for n channel product

NAME	VALUE	SECURITY (get/set)	DESCRIPTION
panspeed	-5 ~ 5	1/4	Pan speed
tiltspeed	-5 ~ 5	1/4	Tilt speed
zoomspeed	-3 ~ 3	1/4	Zoom speed
focusspeed	-3 ~ 3	1/4	Auto focus speed
osdzoom	<boolean>	1/4	Zoom times display
preset_i<0~19>_name	string[40]	1/4	The name of preset location
preset_i<0~19>_zoom	0 ~ 16384	1/4	The zoom position of each preset location "x1" : 0 "x2" : 6148 "x3" : 8854 "x4" : 10480 "x5" : 11608 "x6" : 12458 "x7" : 13136 "x8" : 13694 "x9" : 14168 "x10" : 14576 "x11" : 14930 "x12" : 15236 "x13" : 15504 "x14" : 15738 "x15" : 15938 "x16" : 16112 "x17" : 16258 "x18" : 16384
uart	0 ~ (m-1), m is UART count	1/4	Select corresponding uart
cameraid	0~255	1/4	Camera ID controlling external PTZ camera.
isptz	<boolean>	1/7	To distinguish the video channel if mapping to a PTZ camera

Group: **uart**

NAME	VALUE	SECURITY (get/set)	DESCRIPTION
ptzdrivers_i<0~19, 127>_name	string[40]	1/4	Name of the PTZ driver.
ptzdrivers_i<0~19, 127>_location	string[128]	1/4	Full path of the PTZ driver.

Group: **uart_i<0~(n-1)>** n is uart port count

NAME	VALUE	SECURITY (get/set)	DESCRIPTION
baudrate	110,300,600,1200,2400,3600,4800,7200,9600,19200,38400,57600,115200	4/4	Set baud rate of COM port.
databit	5,6,7,8	4/4	Data bits in a character frame.
paritybit	none, odd, even	4/4	For error checking.
stopbit	1,2	4/4	1 2-1.5 , data bit is 5 2-2
uartmode	rs485, rs232	4/4	RS485 or RS232.
uartreset	<boolean>	4/4	Set this flag to true to apply change in UART configuration.
customdrvcommand_i<0~9>	string[128]	1/4	PTZ command for custom camera.
speedlink_i<0~4>_name	string[40]	1/4	Additional PTZ command name.
speedlink_i<0~4>_cmd	string[128]	1/4	Additional PTZ command list.
ptzdriver	0~19, 127 (custom), 128 (no driver)	4/4	The PTZ driver is used by this COM port.

Group: **privacymask_c<0~(n-1)>** for n channel product

NAME	VALUE	SECURITY (get/set)	DESCRIPTION
enable	<boolean>	4/4	Enable privacy mask.
win_i<0~4>_enable	<boolean>	4/4	Enable privacy mask window.
win_i<0~4>_name	string[14]	4/4	Name of the privacy mask window.
win_i<0~4>_left	0 ~ 320/352	4/4	Left coordinate of window position.

win_i<0~4>_top	0 ~ 240/288	4/4	Top coordinate of window position.
win_i<0~4>_width	0 ~ 320/352	4/4	Width of privacy mask window.
win_i<0~4>_height	0 ~ 240/288	4/4	Height of privacy mask window.
win_i<0~4>_color	0 ~ 13	4/4	Color of privacy mask window

Group: capability

NAME	VALUE	SECURITY (get/set)	DESCRIPTION
api_httpversion	0200a	0/7	The HTTP API version.
bootuptime	<positive integer>	0/7	Server bootup time.
nir	0, <positive integer>	0/7	Number of IR interfaces.
ndi	0, <positive integer>	0/7	Number of digital inputs.
ndo	0, <positive integer>	0/7	Number of digital outputs.
naudioin	0, <positive integer>	0/7	Number of audio inputs.
naudioout	0, <positive integer>	0/7	Number of audio outputs.
nvideoin	<positive integer>	0/7	Number of video inputs.
nmediastream	<positive integer>	0/7	Number of media stream per channels.
nvideosetting	<positive integer>	0/7	Number of video settings per channel.
naudiosetting	<positive integer>	0/7	Number of audio settings per channel.
nuart	0, <positive integer>	0/7	Number of UART interfaces.
ptzenabled	<positive integer>	0/7	An 32-bits integer, each bit can be set separately as follows: Bit 0 => Support Network Camera control function 0(not support), 1(support) Bit 1 => Build-in or external Network Camera. 0(external), 1(build-in) Bit 2 => Support pan operation. 0(not support), 1(support) Bit 3 => Support tilt operation. 0(not support), 1(support) Bit 4 => Support zoom operation. Bit 5 => Support focus operation.

			0(not support), 1(support)
protocol_https	< boolean >	0/7	Indicate whether to support HTTP over SSL.
protocol_rtsp	< boolean >	0/7	Indicate whether to support RTSP.
protocol_sip	<boolean>	0/7	Indicate whether to support SIP.
protocol_maxconnection	<positive integer>	0/7	The maximum allowed simultaneous connections.
protocol_rtp_multicast_scalable	<boolean>	0/7	Indicate whether to support scalable multicast.
protocol_rtp_multicast_backchannel	<boolean>	0/7	Indicate whether to support backchannel multicast.
protocol_rtp_tcp	<boolean>	0/7	Indicate whether to support RTP over TCP.
protocol_rtp_http	<boolean>	0/7	Indicate whether to support RTP over HTTP.
protocol_spush_mjpeg	<boolean>	0/7	Indicate whether to support server push MJPEG.
protocol_snmp	<boolean>	0/7	Indicate whether to support SNMP.
videoin_type	0, 1, 2	0/7	0 => Interlaced CCD 1 => Progressive CCD 2 => CMOS
videoin_resolution	<a list of available resolution separated by commas>	0/7	Available resolutions list.
videoin_maxframe rate	<a list of available maximum frame rate separated by commas>	0/7	Available maximum frame list.
videoin_codec	<a list of available codec types separated by commas>	0/7	Available codec list.
videoout_codec	<a list of the available codec types separated by commas>	0/7	Available codec list.
audio_aec	<boolean>	0/7	Indicate whether to support acoustic echo cancellation.
audio_extmic	<boolean>	0/7	Indicate whether to support external microphone input.
audio_linein	<boolean>	0/7	Indicate whether to support external line input.
audio_lineout	<boolean>	0/7	Indicate whether to support line output.

audio_headphone out	<boolean>	0/7	Indicate whether to support headphone output.
audioin_codec	<a list of the available codec types separated by commas>	0/7	Available codec list.
audioout_codec	<a list of the available codec types separated by commas>	0/7	Available codec list.
uart_httpstunnel	<boolean>	0/7	Indicate whether to support HTTP tunnel for UART transfer.
transmission_mod e	Tx, Rx, Both	0/7	Indicate transmission mode of the machine: TX = server, Rx = receiver box, Both = DVR.
network_wire	<boolean>	0/7	Indicate whether to support Ethernet.
network_wireless	<boolean>	0/7	Indicate whether to support wireless.

Group: **event_i**<0~2>

PARAMETER	VALUE	SECURITY (get/set)	DESCRIPTION
name	string[40]	6/6	Identification of this entry.
enable	0, 1	6/6	Enable or disable this event.
priority	0, 1, 2	6/6	Indicate the priority of this event: "0" = low priority "1" = normal priority "2" = high priority
delay	1~999	6/6	Delay in seconds before detecting the next event.
trigger	boot, di, motion, seq	6/6	Indicate the trigger condition: "boot" = System boot "di" = Digital input "motion" = Video motion detection "seq" = Periodic condition
di	<integer>	6/6	Indicate which DI detects. This field is required when trigger condition is "di". One bit represents one digital input. The LSB indicates DI 0.

mdwin	<integer>	6/6	Indicate which motion detection windows detect. This field is required when trigger condition is "md". One bit represents one window. The LSB indicates the 1 st window. For example, to detect the 1 st and 3 rd windows, set mdwin as 5.
inter	1~999	6/6	Interval of snapshots in minutes. This field is used when trigger condition is "seq".
weekday	0~127	6/6	Indicate which weekday is scheduled. One bit represents one weekday. bit0 (LSB) = Saturday bit1 = Friday bit2 = Thursday bit3 = Wednesday bit4 = Tuesday bit5 = Monday bit6 = Sunday For example, to detect events on Friday and Sunday, set weekday as 66.
begintime	hh:mm	6/6	Begin time of the weekly schedule.
endtime	hh:mm	6/6	End time of the weekly schedule. (00:00 ~ 24:00 sets schedule as always on)
action_do_i<0~(ndo-1)>_enable	0, 1	6/6	Enable or disable trigger digital output.
action_do_i<0~(ndo-1)>_duration	1~999	6/6	Duration of the digital output trigger in seconds.
action_server_i<0~4>_enable	0, 1	6/6	Enable or disable this server action. The default value is 0.
action_server_i<0~4>_media	NULL, 0~4	6/6	Index of the attached media.

Group: **server_i<0~4>**

PARAMETER	VALUE	DEFAULT	SECURITY (get/set)	DESCRIPTION
name	string[40]	NULL	6/6	Identification of this entry

type	email, ftp, http, ns	email	6/6	Indicate the server type: "email" = email server "ftp" = FTP server "http" = HTTP server "ns" = network storage
http_url	string[128]	http://	6/6	URL of the HTTP server to upload.
http_username	string[64]	NULL	6/6	Username to log in to the server.
http_passwd	string[64]	NULL	6/6	Password of the user.
ftp_address	string[128]	NULL	6/6	FTP server address.
ftp_username	string[64]	NULL	6/6	Username to log in to the server.
ftp_passwd	string[64]	NULL	6/6	Password of the user.
ftp_port	0~65535	21	6/6	Port to connect to the server.
ftp_location	string[128]	NULL	6/6	Location to upload or store the media.
ftp_passive	0, 1	1	6/6	Enable or disable passive mode. 0 = disable passive mode 1 = enable passive mode
email_address	string[128]	NULL	6/6	Email server address.
email_username	string[64]	NULL	6/6	Username to log in to the server.
email_passwd	string[64]	NULL	6/6	Password of the user.
email_senderemail	string[128]	NULL	6/6	Email address of the sender.
email_recipientemail	string[128]	NULL	6/6	Email address of the recipient.
ns_location	string[128]	NULL	6/6	Location to upload or store the media.
ns_username	string[64]	NULL	6/6	Username to log in to the server.
ns_passwd	string[64]	NULL	6/6	Password of the user.
ns_workgroup	string[64]	NULL	6/6	Workgroup for network storage.

Group: **media_i<0~4>** (media_freespace is used internally.)

PARAMETER	VALUE	SECURITY (get/set)	DESCRIPTION
name	string[40]	6/6	Identification of this entry
type	snapshot, systemlog, videoclip,	6/6	Media type to send to the server or store on the server.
snapshot_source	<integer>	6/6	Indicate the source of media stream. 0 means the first stream. 1 means the second stream and etc.
snapshot_prefix	string[16]	6/6	Indicate the prefix of the filename.

snapshot_datesuffix	0, 1	6/6	Add date and time suffix to filename: 1 = Add date and time suffix. 0 = Do not add.
snapshot_preevent	0 ~ 7	6/6	Indicates the number of pre-event images.
snapshot_postevent	0 ~ 7	6/6	The number of post-event images.
videoclip_source	<integer>	6/6	Indicate the source of media stream. 0 means the first stream. 1 means the second stream and etc. 2 means the third stream and etc. 3 means the fourth stream and etc.
videoclip_prefix	string[16]	6/6	Indicate the prefix of the filename.
videoclip_preevent	0 ~ 9	6/6	Indicates the time for pre-event recording in seconds.
videoclip_maxduration	1 ~ 10	6/6	Maximum duration of one video clip in seconds.
videoclip_maxsize	50 ~ 1500	6/6	Maximum size of one video clip file in Kbytes.

Group: **recording_i**<0~1>

PARAMETER	VALUE	SECURITY (get/set)	DESCRIPTION
name	string[40]	6/6	Identification of this entry.
enable	0, 1	6/6	Enable or disable this recording.
priority	0, 1, 2	6/6	Indicate the priority of this recording: "0" indicates low priority. "1" indicates normal priority. "2" indicates high priority.
source	<integer>	6/6	Indicate the source of media stream. 0 means the first stream. 1 means the second stream and etc.
weekday	0~127	6/6	Indicate which weekday is scheduled. One bit represents one weekday. bit0 (LSB) = Saturday bit1 = Friday bit2 = Thursday bit3 = Wednesday bit4 = Tuesday bit5 = Monday bit6 = Sunday For example, to detect events on Friday and Sunday, set weekday as 66.
begintime	hh:mm	6/6	Start time of the weekly schedule.

endtime	hh:mm	6/6	End time of the weekly schedule. (00:00~24:00 indicates schedule always on)
prefix	string[16]	6/6	Indicate the prefix of the filename.
cyclesize	<integer>	6/6	The maximum size for cycle recording in Kbytes when choosing to limit recording size.
maxfilesize	200~6000	6/6	The max size for one file in Kbytes
dest	0~4	6/6	The destination to store the recorded data. "0~4" means the index of the network storage.

Group: **path**

NAME	VALUE	SECURITY (get/set)	DESCRIPTION
encoder1_start	<boolean>	7/7	Specify the HTTP push server is active for stream 1
encoder2_start	<boolean>	7/7	Specify the HTTP push server is active for stream 2

Drive the Digital Output

Note: This request requires Viewer privileges.

Method: GET/POST

Syntax:

```
http://<servername>/cgi-bin/dido/setdo.cgi?do1=<state>[&do2=<state>]
[&do3=<state>][&do4=<state>][&return=<return page>]
```

Where state is 0 or 1; "0" means inactive or normal state, while "1" means active or triggered state.

PARAMETER	VALUE	DESCRIPTION
do<num>	0, 1	0 - Inactive, normal state 1 - Active, triggered state
return	<return page>	Redirect to the page <return page> after the parameter is assigned. The <return page> can be a full URL path or relative path according to the current path. If you omit this parameter, it will redirect to an empty page.

Example: Drive the digital output 1 to triggered state and redirect to an empty page.

```
http://myserver/cgi-bin/dido/setdo.cgi?do1=1
```

Query Status of the Digital Input

Note: This request requires Viewer privileges.

Method: GET/POST

Syntax:

```
http://<servername>/cgi-bin/dido/getdi.cgi?[di0][&di1][&di2][&di3]
```

If no parameter is specified, all of the digital input statuses will be returned.

Return:

```
HTTP/1.0 200 OK\r\n
Content-Type: text/plain\r\n
Content-Length: <length>\r\n
\r\n
[di0=<state>]\r\n
[di1=<state>]\r\n
[di2=<state>]\r\n
[di3=<state>]\r\n
```

where <state> can be 0 or 1.

Example: Query the status of digital input 1.

Request:

```
http://myserver/cgi-bin/dido/getdi.cgi?di1
```

Response:

```
HTTP/1.0 200 OK\r\n
Content-Type: text/plain\r\n
Content-Length: 7\r\n
\r\n
di1=1\r\n
```

Query Status of the Digital Output

Note: This request requires Viewer privileges.

Method: GET/POST

Syntax:

```
http://<servername>/cgi-bin/dido/getdo.cgi?[do0][&do1][&do2][&do3]
```

If no parameter is specified, all the digital output statuses will be returned.

Return:

```
HTTP/1.0 200 OK\r\n
Content-Type: text/plain\r\n
Content-Length: <length>\r\n
\r\n
[do0=<state>]\r\n
[do1=<state>]\r\n
[do2=<state>]\r\n
[do3=<state>]\r\n
```

where <state> can be 0 or 1.

Example: Query the status of digital output 1.

Request:

```
http://myserver/cgi-bin/dido/getdo.cgi?do1
```

Response:

```
HTTP/1.0 200 OK\r\n
Content-Type: text/plain\r\n
Content-Length: 7\r\n
\r\n
do1=1\r\n
```

Capture Single Snapshot

Note: This request requires Normal User privileges.

Method: GET/POST

Syntax:

```
http://<servername>/cgi-bin/viewer/video.jpg?[channel=<value>][&resolution=<value>]
[&quality=<value>]
```

If the user requests a size larger than all stream settings on the server, this request will fail.

PARAMETER	VALUE	DEFAULT	DESCRIPTION
-----------	-------	---------	-------------

channel	0~(n-1)	0	The channel number of the video source.
resolution	<available resolution>	0	The resolution of the image.
quality	1~5	3	The quality of the image.

The server will return the most up-to-date snapshot of the selected channel and stream in JPEG format. The size and quality of the image will be set according to the video settings on the server.

Return:

```
HTTP/1.0 200 OK\r\n
Content-Type: image/jpeg\r\n
[Content-Length: <image size>\r\n]

<binary JPEG image data>
```

Account Management

Note: This request requires Administrator privileges.

Method: GET/POST

Syntax:

```
http://<servername>/cgi-bin/admin/editaccount.cgi?
method=<value>&username=<name>[&userpass=<value>][&privilege=<value>]
[&privilege=<value>][...][&return=<return page>]
```

PARAMETER	VALUE	DESCRIPTION
method	Add	Add an account to the server. When using this method, the "username" field is necessary. It will use the default value of other fields if not specified.
	Delete	Remove an account from the server. When using this method, the "username" field is necessary, and others are ignored.
	edit	Modify the account password and privilege. When using this method, the "username" field is necessary, and other fields are optional. If not specified, it will keep the original settings.
username	<name>	The name of the user to add, delete, or edit.
userpass	<value>	The password of the new user to add or that of the old user to modify. The default value is an empty string.
privilege	<value>	The privilege of the user to add or to modify.
	view	Viewer privilege.
	operator	Operator privilege.

	admin	Administrator privilege.
return	<return page>	Redirect to the page <return page> after the parameter is assigned. The <return page> can be a full URL path or relative path according to the current path. If you omit this parameter, it will redirect to an empty page.

System Logs

Note: This request require Administrator privileges.

Method: GET/POST

Syntax:

```
http://<servername>/cgi-bin/admin/syslog.cgi
```

Server will return the most up-to-date system log.

Return:

```
HTTP/1.0 200 OK\r\n
Content-Type: text/plain\r\n
Content-Length: <syslog length>\r\n
\r\n
<system log information>\r\n
```

Upgrade Firmware

Note: This request requires Administrator privileges.

Method: POST

Syntax:

```
http://<servername>/cgi-bin/admin/upgrade.cgi
```

Post data:

```
fimage=<file name>[&return=<return page>]\r\n
\r\n
<multipart encoded form data>
```

Server will accept the file named <file name> to upgrade the firmware and return with <return page> if indicated.

Camera Control

Note: This request requires Viewer privileges.

Method: GET/POST

Syntax:

```
http://<servername>/cgi-bin/viewer/camctrl.cgi?[channel=<value>][&camid=<value>][&move=<value>][&focus=<value>][&speedpan=<value>][&speedtilt=<value>][&speedzoom=<value>][&speedfocus=<value>][&auto=<value>][&zoom=<value>][&speedlink=<value>] [&return=<return page>]
```

PARAMETER	VALUE	DESCRIPTION
channel	<0~(n-1)>	Channel of video source.
camid	0, <positive integer>	Camera ID.
move	home	Move to camera to home position.
	up	Move camera up.
	down	Move camera down.
	left	Move camera left.
	right	Move camera right.
speedpan	-5 ~ 5	Set the pan speed.
speedtilt	-5 ~ 5	Set the tilt speed.
speedzoom	-3 ~ 3	Set the zoom speed.
speedfocus	-3 ~ 3	Set the focus speed.
auto	pan	Auto pan.
	patrol	Auto patrol.
	stop	Stop camera.
zoom	wide	Zoom larger view with current speed.
	tele	Zoom further with current speed.
focus	auto	Auto focus.
	far	Focus on further distance.
	near	Focus on closer distance.
speedlink	0 ~ 4	Issue speed link command.
return	<return page>	Redirect to the page <return page> after the parameter is assigned. The <return page> can be a full URL path or relative path according to the current path. If you omit this parameter, it will redirect to an empty page.

Recall

Note: This request requires Viewer privileges.

Method: GET

Syntax:

```
http://<servername>/cgi-bin/viewer/recall.cgi?
recall=<value>[&channel=<value>][&return=<return page>]
```

PARAMETER	VALUE	DESCRIPTION
recall	Text string less than 30 characters	One of the present positions to recall.
channel	<0~(n-1)>	Channel of the video source.
return	<return page>	Redirect to the page <return page> after the parameter is assigned. The <return page> can be a full URL path or relative path according to the current path. If you omit this parameter, it will redirect to an empty page.

Preset Locations

Note: This request requires Operator privileges.

Method: GET/POST

Syntax:

```
http://<servername>/cgi-bin/operator/preset.cgi?[channel=<value>]
[&addpos=<value>][&delpos=<value>][&return=<return page>]
```

PARAMETER	VALUE	DESCRIPTION
addpos	<Text string less than 30 characters>	Add one preset location to the preset list.
channel	<0~(n-1)>	Channel of the video source.
delpos	<Text string less than 30 characters>	Delete preset location from preset list.
return	<return page>	Redirect to the page <return page> after the parameter is assigned. The <return page> can be a full URL path or relative path according to the current path. If you omit this parameter, it will redirect to an empty page.

IP Filtering

Note: This request requires Administrator access privileges.

Method: GET/POST

Syntax:

```
http://<servername>/cgi-bin/admin/ipfilter.cgi?
method=<value>&[start=<ipaddress>&end=<ipaddress>][&index=<value>]
[&return=<return page>]
```

PARAMETER	VALUE	DESCRIPTION
Method	addallow	Add allowed IP address range to the server. Start and end parameters must be specified. If the index parameter is specified, it will try to add starting from the index position.
	adddeny	Add denied IP address range to the server. Start and end parameters must be specified. If the index parameter is specified, it will try to add starting from the index position.
	deleteallow	Remove allowed IP address range from server. If start and end parameters are specified, it will try to remove the matched IP address. If index is specified, it will try to remove the address from given index position. [start, end] parameters have higher priority then the [index] parameter.
	deletedeny	Remove denied IP address range from server. If start and end parameters are specified, it will try to remove the matched IP address. If index is specified, it will try to remove the address from given index position. [start, end] parameters have higher priority then the [index] parameter.
start	<ip address>	The starting IP address to add or to delete.
end	<ip address>	The ending IP address to add or to delete.
index	<value>	The start position to add or to delete.
return	<return page>	Redirect to the page <return page> after the parameter is assigned. The <return page> can be a full URL path or relative path according to the current path. If you omit this parameter, it will redirect to an empty page.

Get SDP of Streams

Note: This request requires Viewer access privileges.

Method: GET/POST

Syntax:

```
http://<servername>/<network_rtsp_s<0~m-1>_accessname>
```

"m" is the stream number.

"network_accessname_<0~(m-1)>" is the accessname for stream "1" to stream "m". Please refer to the "subgroup of network: rtsp" for setting the accessname of SDP.

You can get the SDP by HTTP GET.

Open the Network Stream

Note: This request requires Viewer access privileges.

Syntax:

For HTTP push server (MJPEG):

```
http://<servername>/<network_http_s<0~m-1>_accessname>
```

For RTSP (MP4), the user needs to input the URL below into an RTSP compatible player.

```
rtsp://<servername>/<network_rtsp_s<0~m-1>_accessname>
```

"m" is the stream number.

For details on streaming protocol, please refer to the "control signaling" and "data format" documents.

Technical Specifications

System <ul style="list-style-type: none"> · CPU: VVTK-1000 SoC · Flash: 8MB · RAM: 64MB · Embedded OS: Linux 2.4 	Networking <ul style="list-style-type: none"> · 10/100 Mbps Ethernet, RJ-45 · Protocols: IPv4, TCP/IP, HTTP, UPnP, RTSP/RTP/RTCP, IGMP, SMTP, FTP, DHCP, NTP, DNS, DDNS, and PPPoE
Pan/Tilt/Zoom <ul style="list-style-type: none"> · 18x optical zoom 	Alarm and Event Management <ul style="list-style-type: none"> · Triple-window video for motion detection · One D/I and one D/O for external sensor and alarm · Event notification using HTTP, SMTP, or FTP · Local recording of MP4 file
Lens <ul style="list-style-type: none"> · Focal length: $f=4.1 \sim 73.8$ mm, auto iris, focus range: 290 mm (wide), 800 mm (tele) to infinity · F-number: F1.4 (wide), F3.0 (tele) · Embedded removable IR-cut filter for day & night function 	Security <ul style="list-style-type: none"> · Multi-level user access with password protection · IP address filtering
Angle of View <ul style="list-style-type: none"> · $2.8^\circ \sim 48^\circ$ (horizontal) 	Users <ul style="list-style-type: none"> · Camera live viewing for up to 10 clients
Shutter Time <ul style="list-style-type: none"> · 1/2 sec. to 1/10000 sec. 	Dimension <ul style="list-style-type: none"> · 147 mm (D) x 78 mm (W) x 85 mm (H)
Image Sensor <ul style="list-style-type: none"> · SONY 1/4" progressive scan CCD sensor in VGA resolution 	Weight <ul style="list-style-type: none"> · Net: 824 g
Minimum Illumination <ul style="list-style-type: none"> · 1.61 Lux (F1.4, 1/30s) · 0.38 Lux (F1.4, 1/30s, without IR-cut filter) 	LED Indicator <ul style="list-style-type: none"> · System power and status indicator · System activity and network link indicator
Video <ul style="list-style-type: none"> · Compression: MJPEG & MPEG-4 · Streaming: <ul style="list-style-type: none"> · Simultaneous dual-streaming · MPEG-4 streaming over UDP, TCP, or HTTP · MPEG-4 multicast streaming · MJPEG streaming over HTTP · Supports 3GPP mobile surveillance · Frame rates: <ul style="list-style-type: none"> · MPEG-4: Up to 30/25 fps at 640x480 · MJPEG: Up to 30/25 fps at 640x480 	Power <ul style="list-style-type: none"> · 12V DC · 24V AC · Power consumption: Max. 7.6W · 802.3af compliant Power-over-Ethernet
Image Settings <ul style="list-style-type: none"> · Adjustable image size, quality, and bit rate · Time stamp and text caption overlay · Flip & mirror · Configurable white balance, brightness, sharpness, and exposure · Automatic, manual or scheduled day/night mode · Backlight compensation (BLC) 	Approvals <ul style="list-style-type: none"> · CE, LVD, FCC, VCCI, C-Tick
Audio <ul style="list-style-type: none"> · Compression: <ul style="list-style-type: none"> · GSM-AMR speech compression, bit rate: 4.75 kbps ~12.2 kbps · MPEG-4 AAC audio encoding, bit rate: 16 kbps ~128 kbps · Interface: <ul style="list-style-type: none"> · Built-in microphone · External microphone input · Supports two-way audio via SIP protocol · Supports audio mute 	Operating Environments <ul style="list-style-type: none"> · Temperature: $0 \sim 50^\circ\text{C}$ ($32 \sim 122^\circ\text{F}$) · Humidity: 20%~80% RH
	Viewing System Requirements <ul style="list-style-type: none"> · OS: Microsoft Windows 2000/XP/Vista · Browser: Mozilla Firefox, Internet Explorer 6.x or above · Cell phone: 3GPP player · Real Player: 10.5 or above · Quick Time: 6.5 or above
	Installation, Management, and Maintenance <ul style="list-style-type: none"> · Installation Wizard 2 · 16-CH recording software · Supports firmware upgrade
	Applications <ul style="list-style-type: none"> · SDK available for application development and system integration
	Warranty <ul style="list-style-type: none"> · 24 months

All specifications are subject to change without notice. Copyright ©2008 VIVOTEK INC. All rights reserved.

Technology License Notice

MPEG-4 AAC Technology

THIS PRODUCT IS LICENSED UNDER THE MPEG-4 AAC AUDIO PATENT LICENSE. THIS PRODUCT MAY NOT BE DECOMPILED, REVERSE-ENGINEERED OR COPIED, EXCEPT WITH REGARD TO PC SOFTWARE, OF WHICH YOU MAY MAKE SINGLE COPIES FOR ARCHIVAL PURPOSES. FOR MORE INFORMATION, PLEASE REFER TO [HTTP://WWW.VIALICENSING.COM](http://www.vialicensing.com).

MPEG-4 Visual Technology

THIS PRODUCT IS LICENSED UNDER THE MPEG-4 VISUAL PATENT PORTFOLIO LICENSE FOR THE PERSONAL AND NON-COMMERCIAL USE OF A CONSUMER FOR (i) ENCODING VIDEO IN COMPLIANCE WITH THE MPEG-4 VISUAL STANDARD ("MPEG-4 VIDEO") AND/OR (ii) DECODING MPEG-4 VIDEO THAT WAS ENCODED BY A CONSUMER ENGAGED IN A PERSONAL AND NON-COMMERCIAL ACTIVITY AND/OR WAS OBTAINED FROM A VIDEO PROVIDER LICENSED BY MPEG LA TO PROVIDE MPEG-4 VIDEO. NO LICENSE IS GRANTED OR SHALL BE IMPLIED FOR ANY OTHER USE. ADDITIONAL INFORMATION INCLUDING THAT RELATING TO PROMOTIONAL, INTERNAL AND COMMERCIAL USES AND LICENSING MAY BE OBTAINED FROM MPEG LA, LLC. PLEASE REFER TO [HTTP://WWW.MPEGLA.COM](http://www.mpeg-la.com).

AMR-NB Standard

THIS PRODUCT IS LICENSED UNDER THE AMR-NB STANDARD PATENT LICENSE AGREEMENT. WITH RESPECT TO THE USE OF THIS PRODUCT, THE FOLLOWING LICENSORS' PATENTS MAY APPLY:

TELEFONAKIEBOLAGET ERICSSON AB: US PAT. 6192335; 6275798; 6029125; 6424938; 6058359. NOKIA CORPORATION: US PAT. 5946651; 6199035. VOICEAGE CORPORATION: AT PAT. 0516621; BE PAT. 0516621; CA PAT. 2010830; CH PAT. 0516621; DE PAT. 0516621; DK PAT. 0516621; ES PAT. 0516621; FR PAT. 0516621; GB PAT. 0516621; GR PAT. 0516621; IT PAT. 0516621; LI PAT. 0516621; LU PAT. 0516621; NL PAT. 0516621; SE PAT 0516621; US PAT 5444816; AT PAT. 819303/AT E 198805T1; AU PAT. 697256; BE PAT. 819303; BR PAT. 9604838-7; CA PAT. 2216315; CH PAT. 819303; CN PAT. ZL96193827.7; DE PAT. 819303/DE69611607T2; DK PAT. 819303; ES PAT. 819303; EP PAT. 819303; FR PAT. 819303; GB PAT. 819303; IT PAT. 819303; JP PAT. APP. 8-529817; NL PAT. 819303; SE PAT. 819303; US PAT. 5664053. THE LIST MAY BE UPDATED FROM TIME TO TIME BY LICENSORS AND A CURRENT VERSION OF WHICH IS AVAILABLE ON LICENSOR'S WEBSITE AT [HTTP://WWW.VOICEAGE.COM](http://www.voiceage.com).

Electromagnetic Compatibility (EMC)

FCC Statement

This device complies with FCC Rules Part 15. Operation is subject to the following two conditions.

- This device may not cause harmful interference, and
- This device must accept any interference received, including interference that may cause undesired operation.

This equipment has been tested and found to comply with the limits for a Class B digital device, pursuant to Part 15 of the FCC Rules. These limits are designed to provide reasonable protection against harmful interference in a residential installation. This equipment generates, uses and can radiate radio frequency energy and, if not installed and used in accordance with the instructions, may cause harmful interference to radio communications. However, there is no guarantee that interference will not occur in a partial installation. If this equipment does cause harmful interference to radio or television reception, which can be determined by turning the equipment off and on, the user is encouraged to try to correct the interference by one or more of the following measures:

- Reorient or relocate the receiving antenna.
- Increase the separation between the equipment and receiver.
- Connect the equipment into an outlet on a circuit different from that to which the receiver is connected.
- Consult the dealer or an experienced radio/TV technician for help.

Shielded interface cables must be used in order to comply with emission limits.

CE Mark Warning

This is a Class B product. In a domestic environment, this product may cause radio interference, in which case the user may be required to take adequate measures.

Liability

VIVOTEK Inc. cannot be held responsible for any technical or typographical errors and reserves the right to make changes to the product and manuals without prior notice. VIVOTEK Inc. makes no warranty of any kind with regard to the material contained within this document, including, but not limited to, the implied warranties of merchantability and fitness for any particular purpose.